

See Sheet 1-A For Index of Sheets
See Sheet 1-B For Conventional Symbols

T.I.P. NO. SHEET NO.

B-3690

UO-1

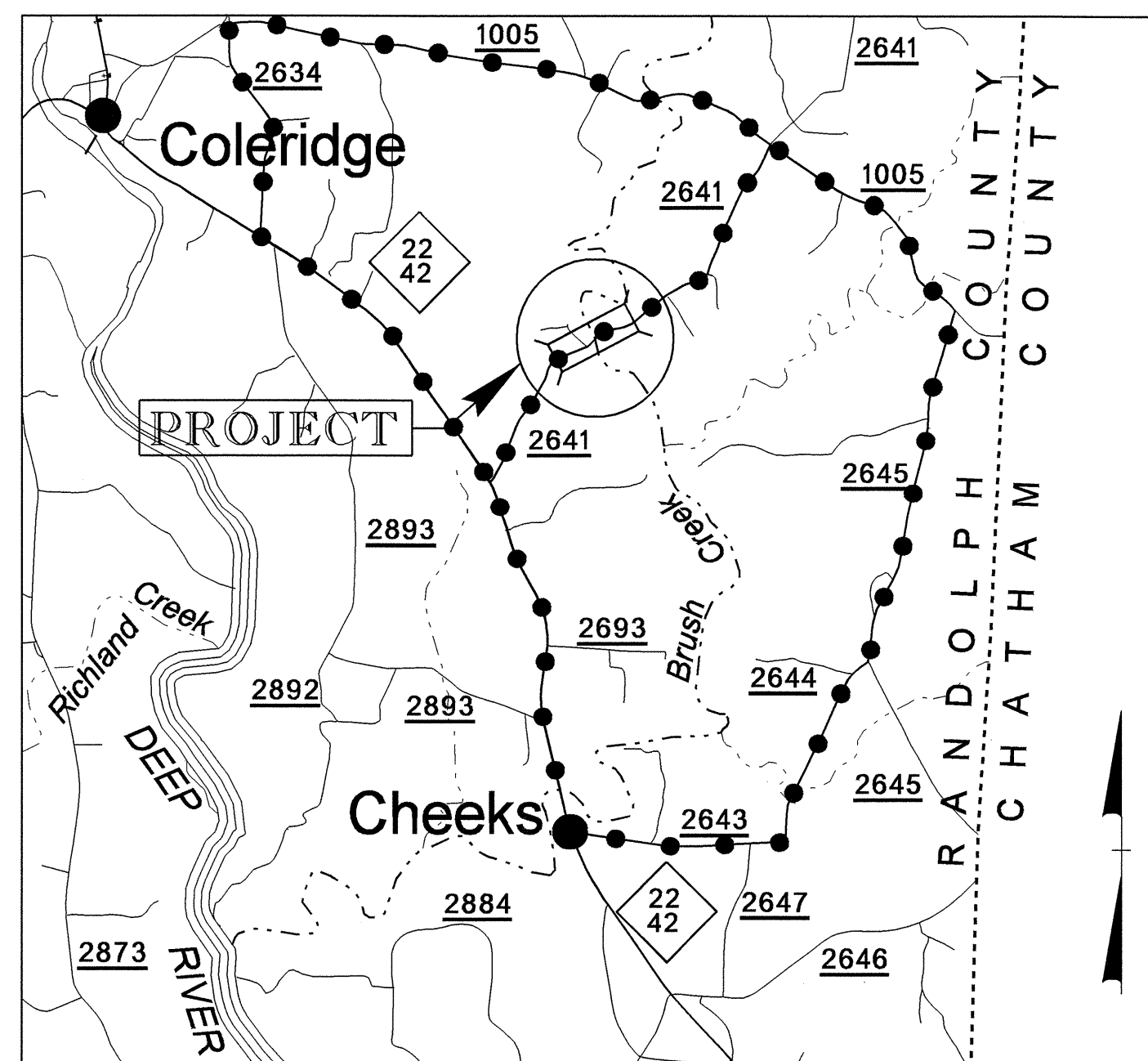
STATE OF NORTH CAROLINA
DIVISION OF HIGHWAYS

**UTILITIES BY OTHERS PLANS
RANDOLPH COUNTY**

**LOCATION: BRIDGE NO. 163 OVER BRUSH
CREEK ON SR 2641**

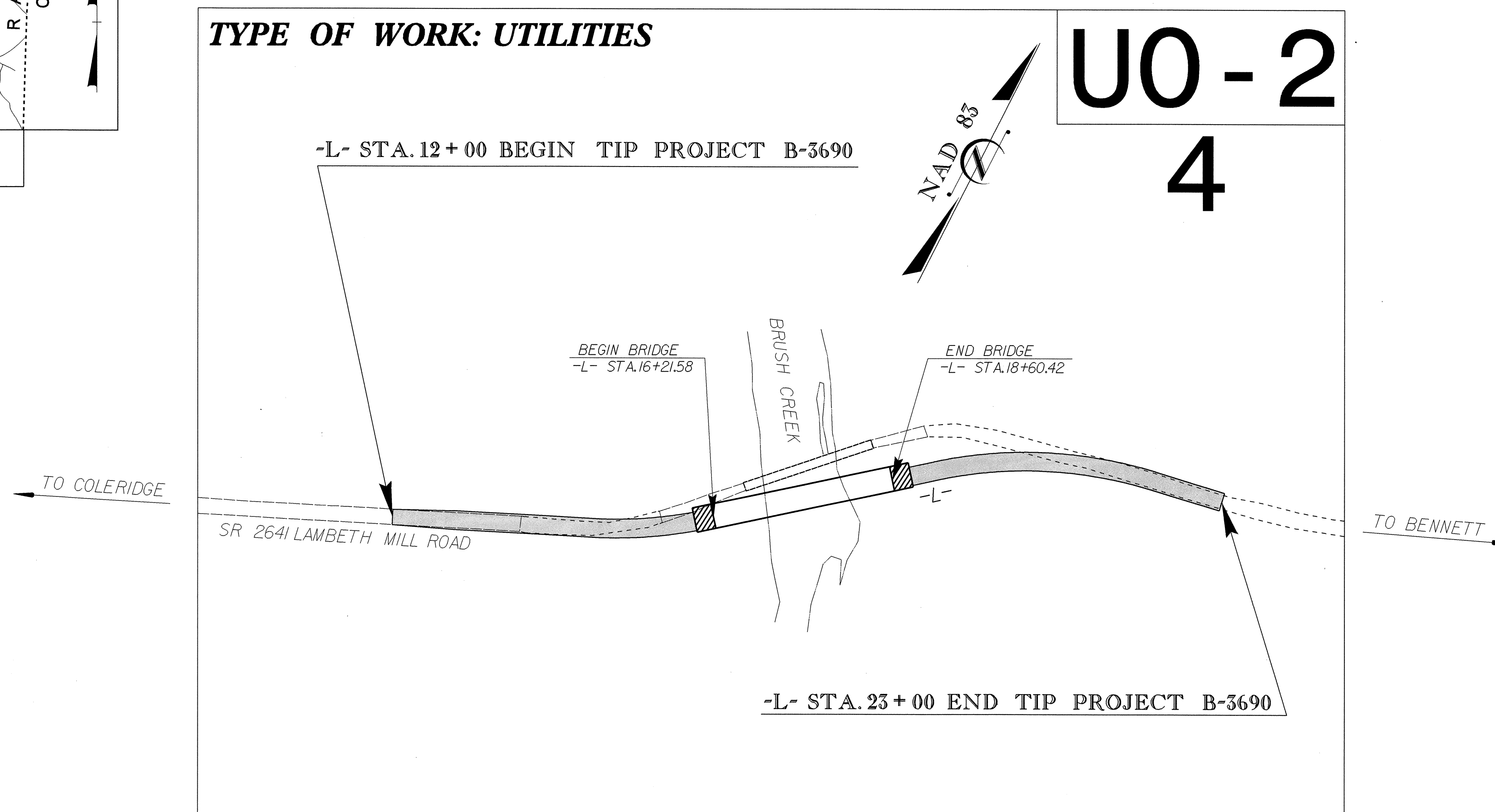
TYPE OF WORK: UTILITIES

**UO-2
4**



VICINITY MAP

DETOUR ROUTE



TIP: B-3690

INDEX OF SHEETS	
SHEET NO.	DESCRIPTION
UO-1	TITLE SHEET
UO-2	UTILITIES BY OTHERS PLAN SHEET

UTILITY OWNERS ON PROJECT
(1) PROGRESS ENERGY
(2) RANDOLPH TELEPHONE

SEAL

PREPARED IN THE OFFICE OF:
**DIVISION OF HIGHWAYS
DESIGN SERVICES
UTILITY SECTION**

1591 MAIL SERVICES CENTER
RALEIGH NC 27699-1591
PHONE (919) 250-4128
FAX (919) 250-4119

Roger Worthington, P.E. UTILITIES SECTION ENGINEER
Steve Mckee, P.E. UTILITIES SQUAD LEADER PROJECT ENGINEER
Alonza Yancey UTILITIES PROJECT DESIGNER

24-MAY-2004 12:22
M:\Utilities\jrm\9804\Projects\B-3690\B-3690_U01.tsh
adancey AT DSC21526