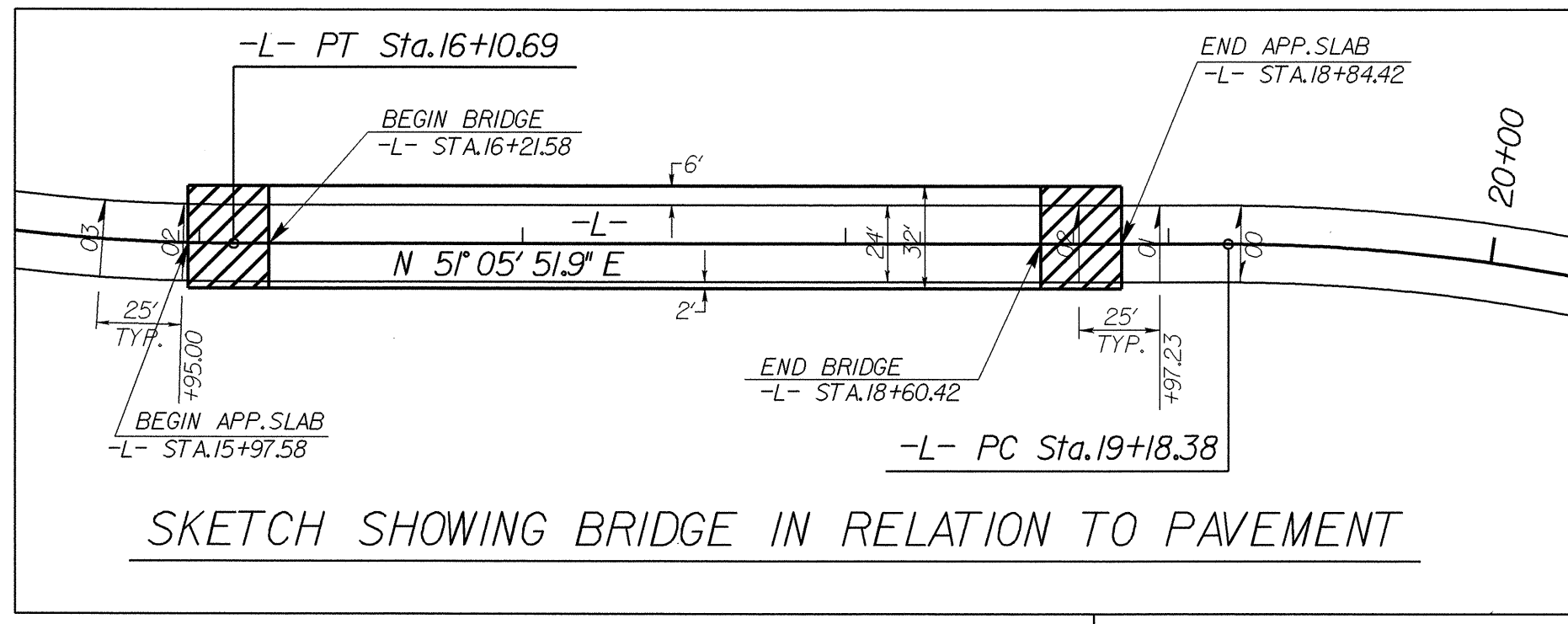
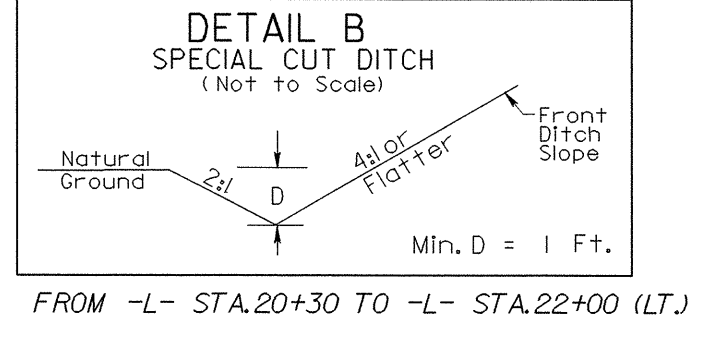
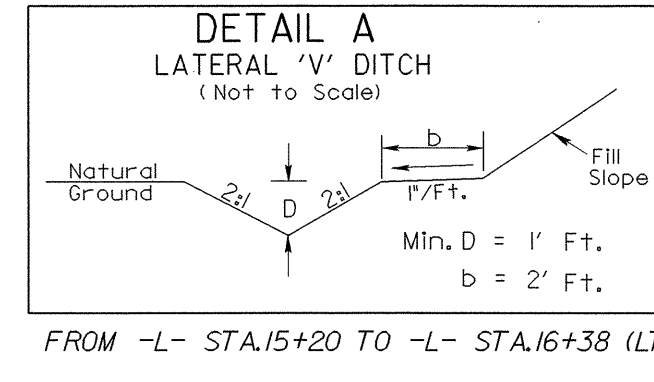


PROJECT REFERENCE NO. B-3690	SHEET NO. 4
RW SHEET NO.	
ROADWAY DESIGN ENGINEER MICHAEL W. LITTLE SEAL 22557 6/21/04	HYDRAULICS ENGINEER STACEY H. BAILEY SEAL 24451 6/30/04

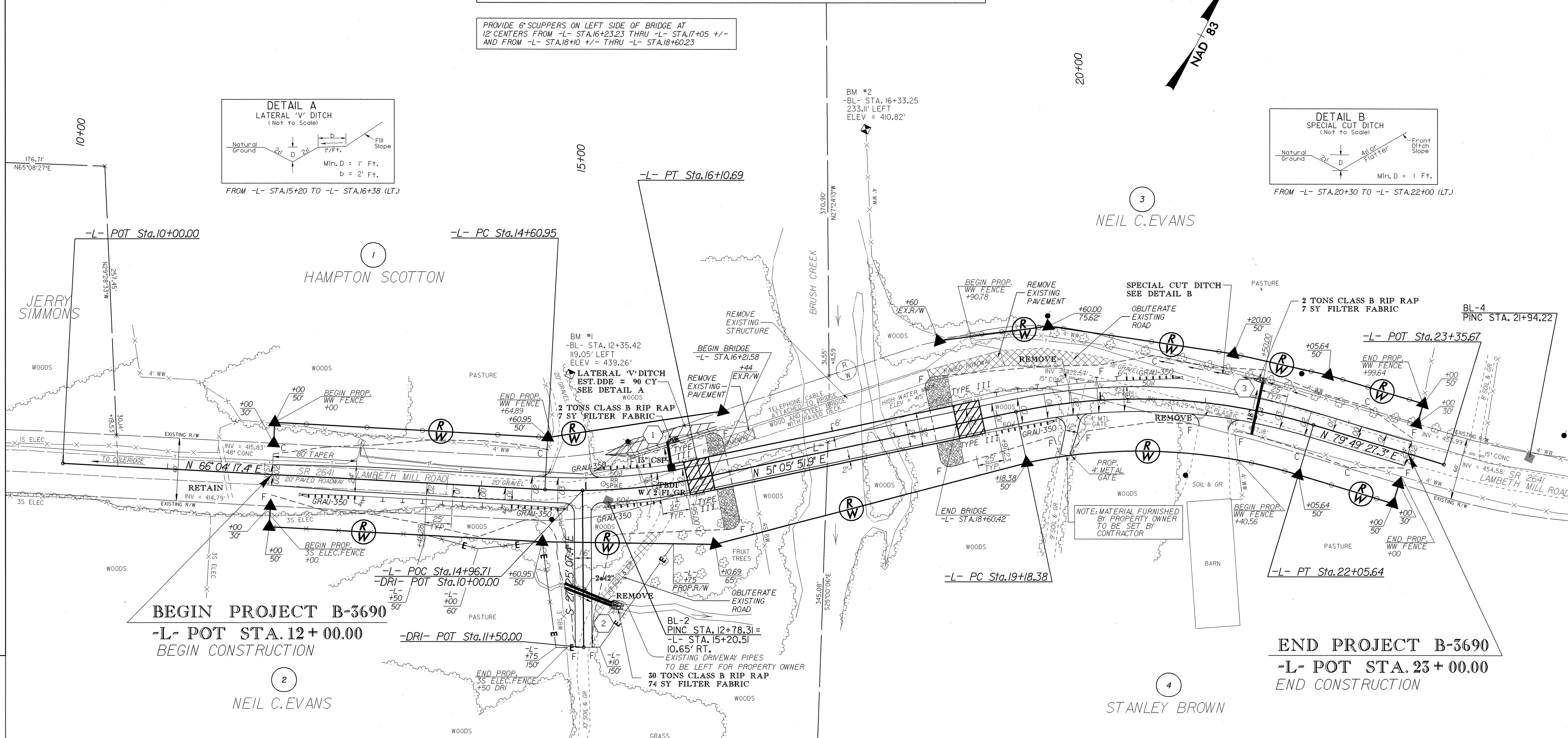


$\Delta = 14^\circ 58' 25.5\" (LT)$       $\Delta = 28^\circ 43' 35.4\" (RT)$   
 $D = 10^\circ 00' 00.0\"$       $D = 10^\circ 00' 00.0\"$   
 $L = 149.74'$       $L = 287.27'$   
 $T = 75.30'$       $T = 146.72'$   
 $R = 572.96'$       $R = 572.96'$   
 \* SE = SEE PLANS     SE = SEE PLANS  
 \* DESIGN EXCEPTION REQUIRED FOR SUPERELEVATION

PROVIDE 6\" SCUPPERS ON LEFT SIDE OF BRIDGE AT 12\" CENTERS FROM -L- STA.16+23.23 THRU -L- STA.17+05 +/- AND FROM -L- STA.18+10 +/- THRU -L- STA.18+60.23



8/17/99  
 REVISIONS  
 09-JUN-2004-08-J  
 R: P: C: S: 056-04-4  
 E: M: O: A: T: R: 133488



NOTES: (1) ALL DRIVEWAY RADII ARE 10' UNLESS SHOWN OTHERWISE  
 (2) SEE SHEET 5 FOR PROFILE -L- & -DRI-  
 (3) SEE SHEETS S-1 TO S-37 FOR STRUCTURE PLANS