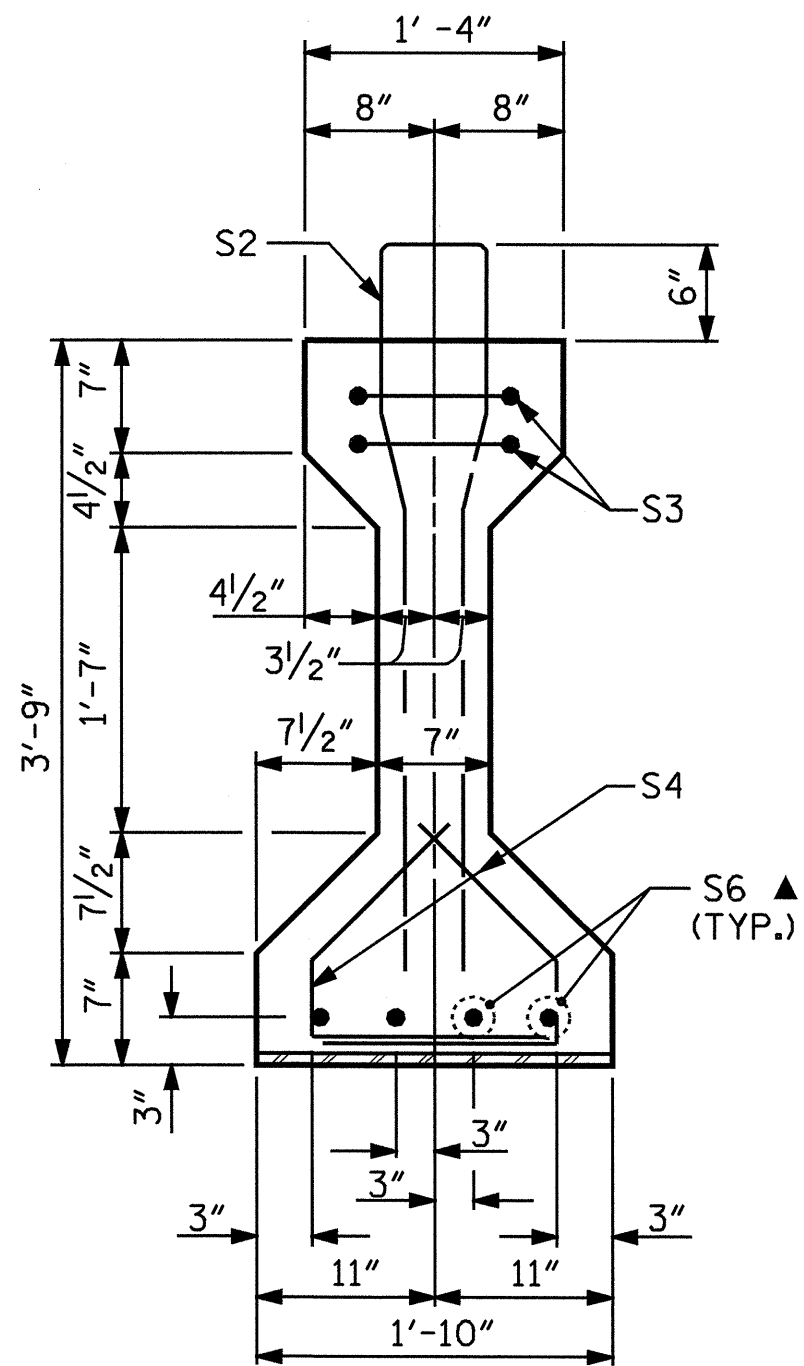
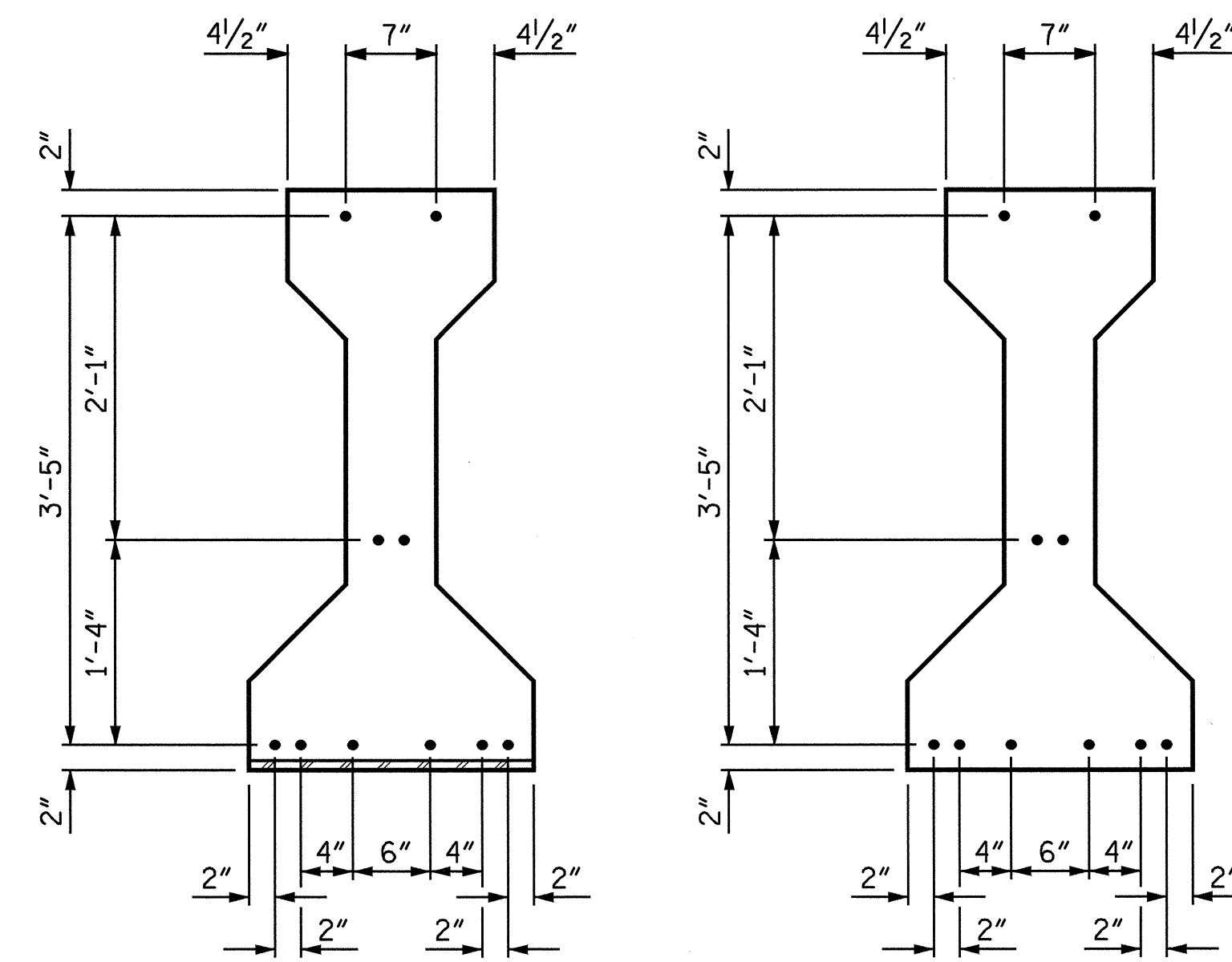


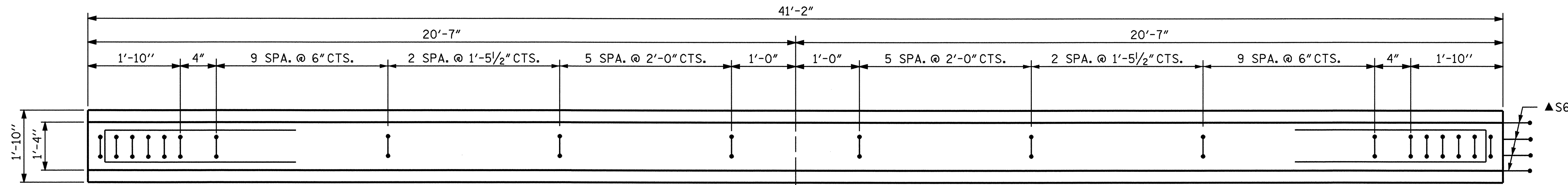
SECTION A-A



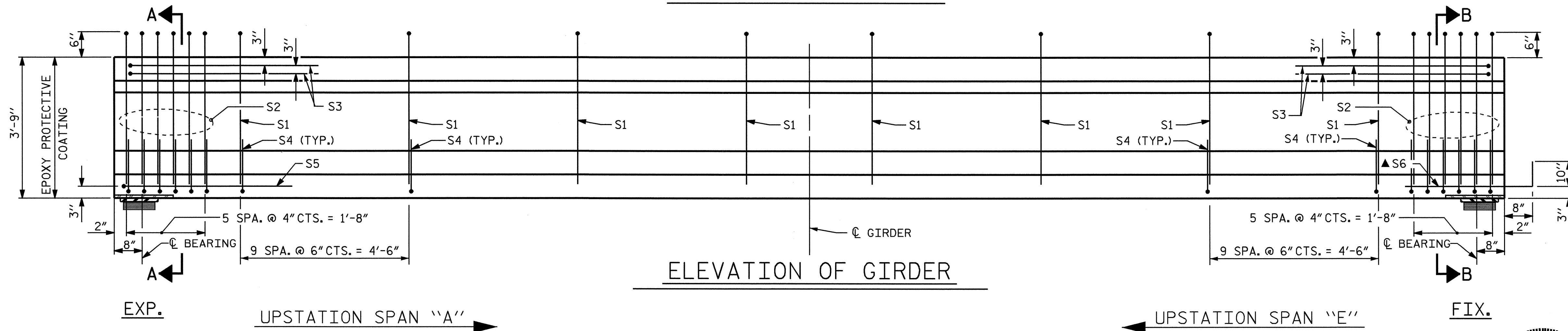
SECTION B-B



AT END OF GIRDER  
AT  $\phi$  OF GIRDER  
 $\frac{1}{2}$ "  $\phi$  LOW RELAXATION STRAND LAYOUT



PLAN OF GIRDER



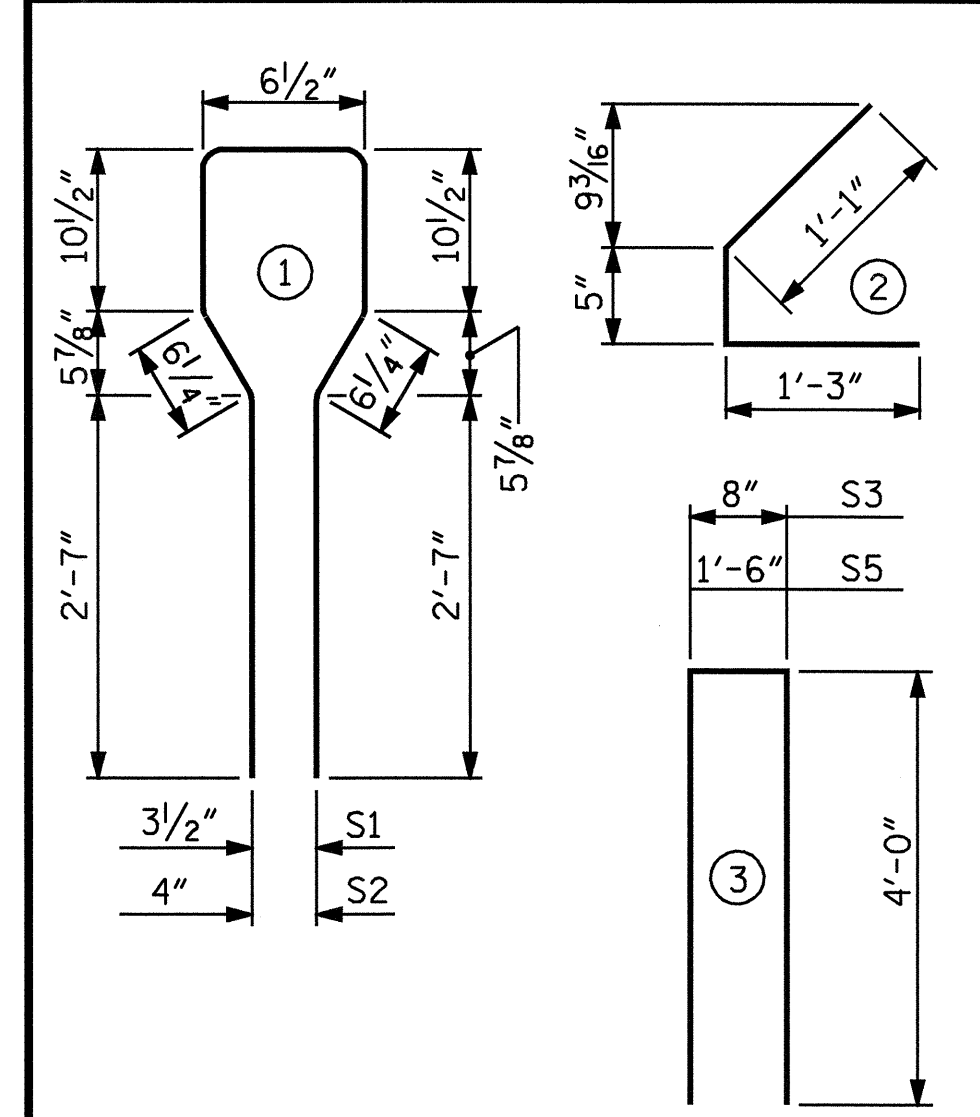
ELEVATION OF GIRDER

$\frac{1}{2}$ " $\phi$ L.R. GRADE 270 STRANDS		
AREA (SQ. INCHES)	ULTIMATE STRENGTH (LBS./STRAND)	APPLIED PRESTRESS (LBS./STRAND)
0.153	41,300	30,980

REINFORCING STEEL FOR ONE GIRDER					
BAR	NUMBER	SIZE	TYPE	LENGTH	WEIGHT
S1	34	#4	1	8'-6"	193
S2	12	#6	1	8'-6"	153
S3	4	#4	3	8'-8"	23
S4	64	#4	2	2'-9"	118
S5	1	#4	3	9'-6"	6
▲S6	4	#5	STR	3'-8"	15

▲ NOTE: S6 BARS SHALL BE BENT AFTER GIRDER FABRICATION AND BEFORE SHIPMENT. HEAT BENDING SHALL NOT BE ALLOWED.

BAR TYPES  
ALL BAR DIMENSIONS ARE OUT-TO-OUT



QUANTITIES FOR ONE GIRDER		
REINFORCING STEEL	5000 PSI CONCRETE	$\frac{1}{2}$ " $\phi$ L.R. STRANDS
LB.	C.Y.	No.
508	5.9	10
GIRDERS REQUIRED		
NUMBER	LENGTH	TOTAL LENGTH
10	41'-2"	411.67

PROJECT NO. B-3690  
RANDOLPH COUNTY  
STATION: 17+41.00 -L-

STATE OF NORTH CAROLINA  
DEPARTMENT OF TRANSPORTATION  
RALEIGH  
AASHTO TYPE III  
PRESTRESSED CONCRETE GIRDER  
CONTINUOUS FOR LIVE LOAD  
SPANS "A" & "E"



ASSEMBLED BY : M. ALLEN	DATE : 7/03	CADD STANDARD
CHECKED BY : P.C. BREWER	DATE : 8/03	
DRAWN BY : RB	2/97	REV. 8/16/99 ARB/LES
CHECKED BY : VP	2/97	

REVISIONS					SHEET NO.
NO.	BY:	DATE:	NO.	BY:	DATE:
1			3		
2			4		
					TOTAL SHEETS 37