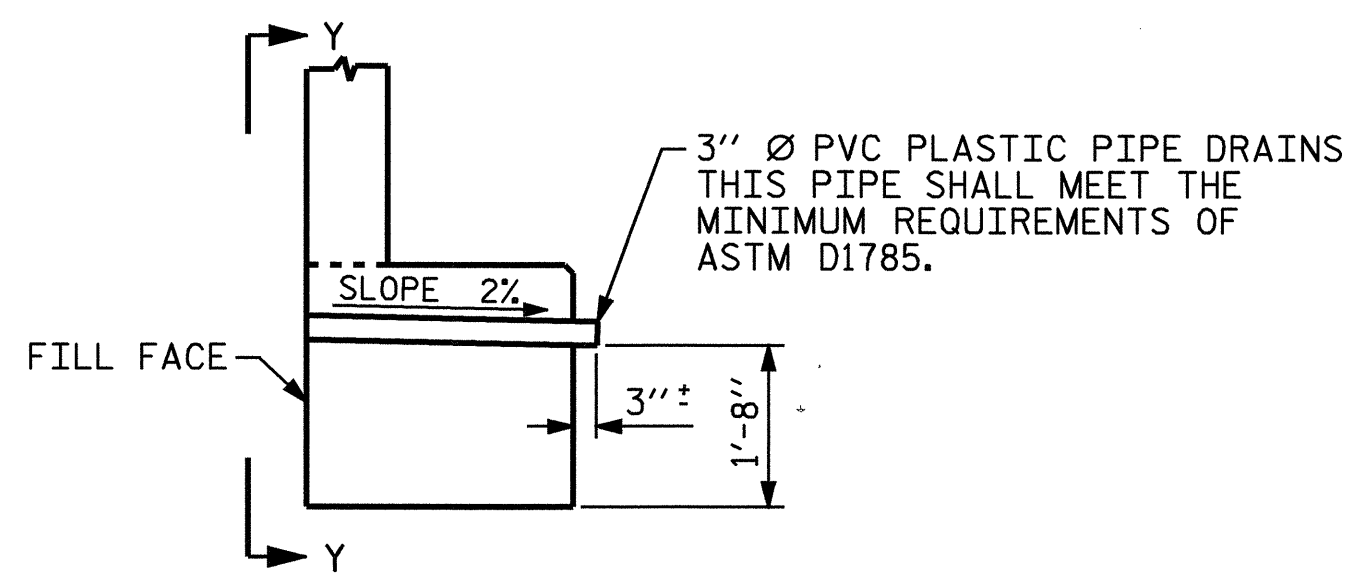
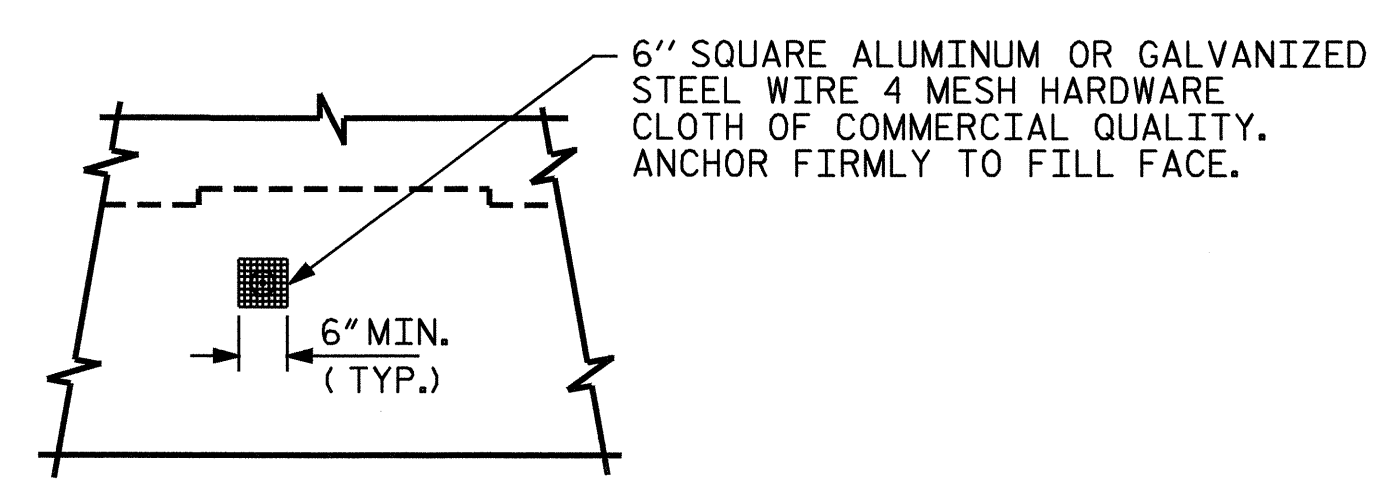


PILE SPLICE DETAILS

*POSITION OF PILE DURING WELDING.



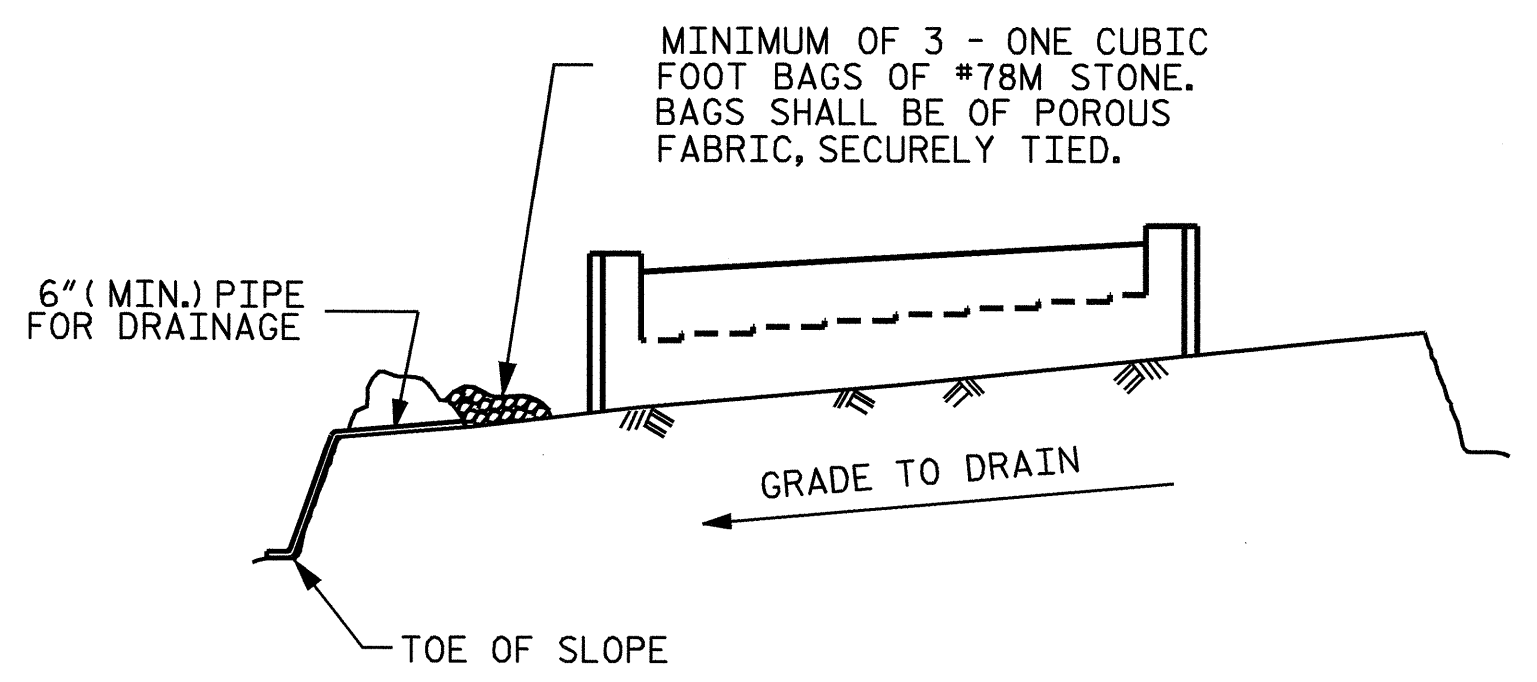
SECTION THRU CAP



VIEW Y-Y

NOTE: NO SEPARATE PAYMENT WILL BE MADE FOR FURNISHING AND INSTALLING THE PVC PLASTIC PIPE DRAINS, HARDWARE CLOTH AND FASTENERS. THE ENTIRE COST OF THIS WORK SHALL BE INCLUDED IN THE UNIT CONTRACT PRICE BID FOR THE SEVERAL PAY ITEMS.

PIPE DRAIN DETAILS



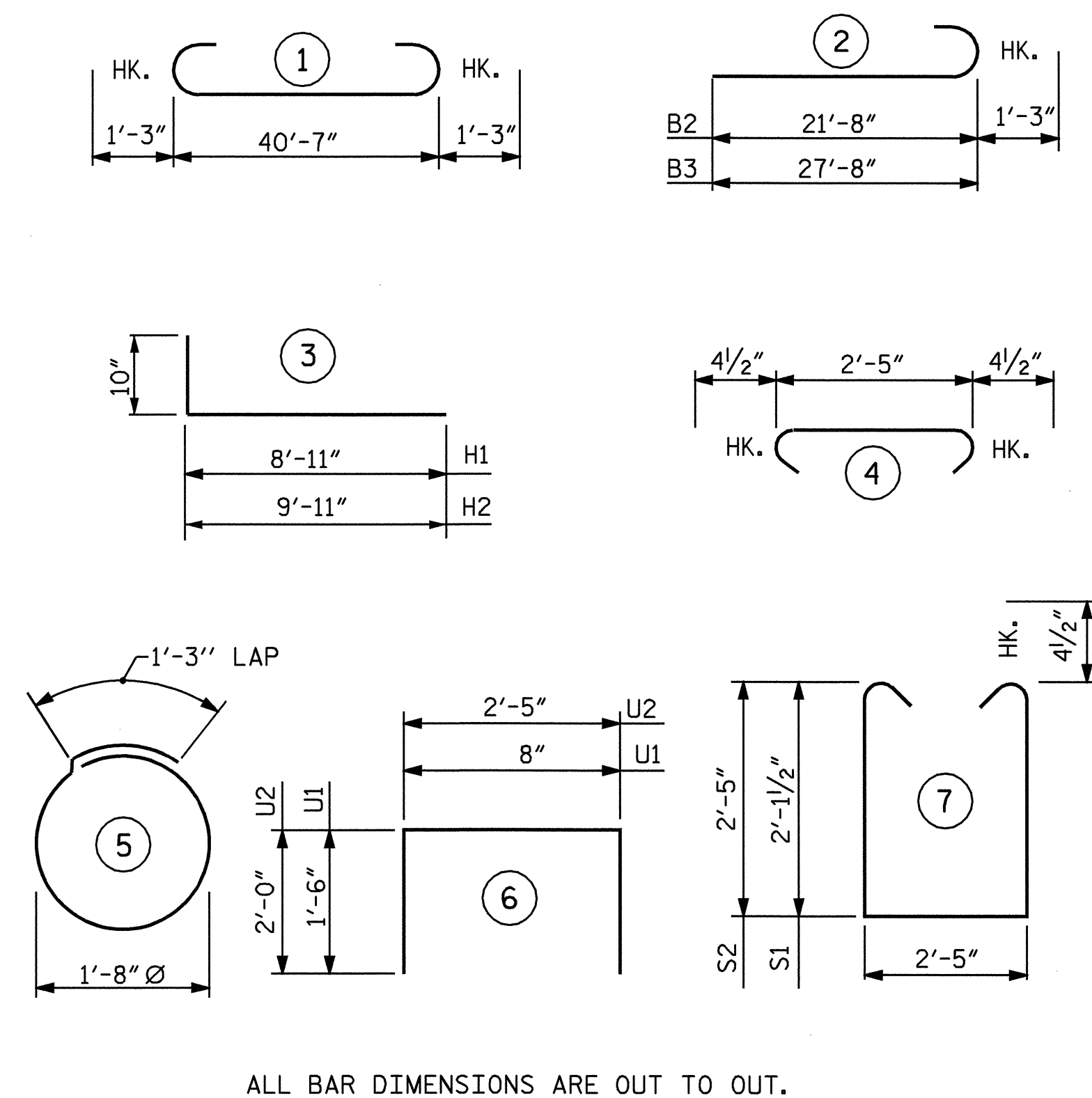
BAGGED STONE AND PIPE SHALL BE PLACED IMMEDIATELY AFTER COMPLETION OF END BENT EXCAVATION. PIPE MAY BE EITHER CONCRETE, CORRUGATED STEEL, CORRUGATED ALUMINUM ALLOY, OR CORRUGATED PLASTIC. PERFORATED PIPE WILL NOT BE ALLOWED.

BAGGED STONE SHALL REMAIN IN PLACE UNTIL THE ENGINEER DIRECTS THAT IT BE REMOVED. THE CONTRACTOR SHALL REMOVE AND DISPOSE OF SILT ACCUMULATIONS AT BAGGED STONE WHEN SO DIRECTED BY THE ENGINEER. BAGS SHALL BE REMOVED AND REPLACED WHENEVER THE ENGINEER DETERMINES THAT THEY HAVE DETERIORATED AND LOST THEIR EFFECTIVENESS.

NO SEPARATE PAYMENT WILL BE MADE FOR THIS WORK AND THE ENTIRE COST OF THIS WORK SHALL BE INCLUDED IN THE UNIT CONTRACT PRICE BID FOR THE SEVERAL PAY ITEMS.

TEMPORARY DRAINAGE AT END BENT

BAR TYPES



ALL BAR DIMENSIONS ARE OUT TO OUT.

BILL OF MATERIAL

END BENT No. 1						
BAR NO.	NO.	SIZE	TYPE	LENGTH	WEIGHT	
B1	4	9	1	43'-1"	586	
B2	4	9	2	22'-11"	312	
B3	4	9	2	28'-11"	393	
B4	4	4	STR	2'-11"	8	
B5	16	4	STR	21'-7"	231	
B6	13	4	STR	2'-5"	21	
H1	16	5	3	9'-9"	163	
H2	18	5	3	10'-9"	202	
K1	16	4	STR	21'-7"	231	
K2	8	4	STR	2'-6"	13	
S1	21	4	7	7'-5"	104	
S2	23	4	7	8'-0"	123	
S3	44	4	4	3'-2"	93	
S4	14	4	5	6'-6"	61	
U1	36	4	6	3'-8"	88	
U2	3	4	6	6'-5"	13	
V1	72	5	STR	5'-10"	438	
V2	26	5	STR	7'-0"	190	
V3	28	5	STR	7'-8"	224	
REINFORCING STEEL				LBS.	3494	

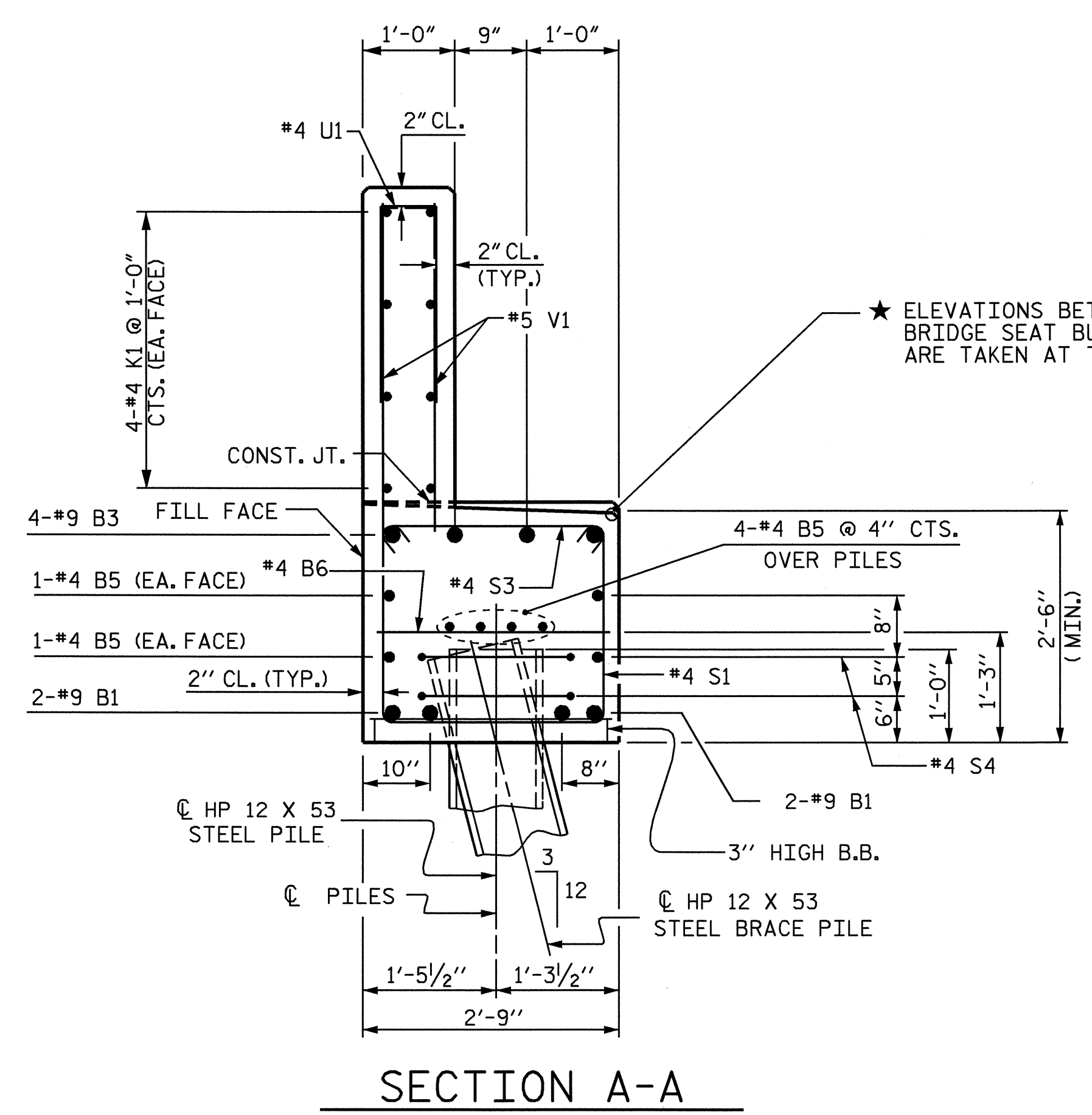
CLASS A CONCRETE BREAKDOWN :

POUR #1 - (CAP & LOWER WINGS)	13.6 C.Y.
POUR #2 - (BACKWALL & UPPER WINGS)	9.3 C.Y.
TOTAL	22.9 C.Y.

HP 12 x 53 STEEL PILES NO. 7 90 LIN. FEET

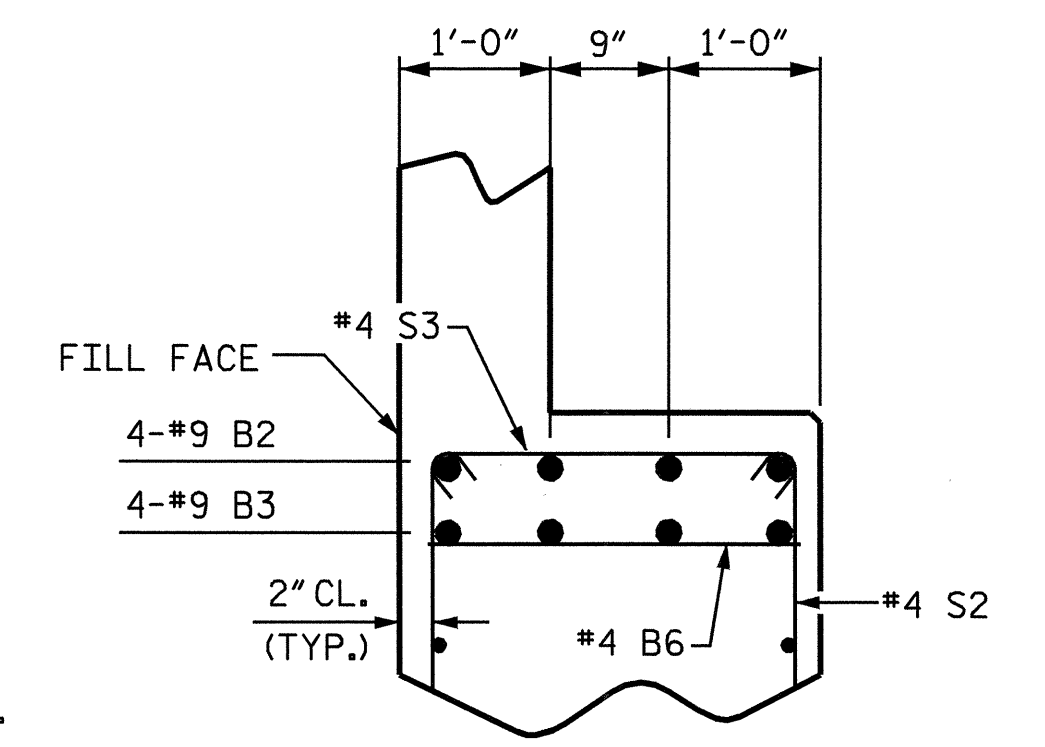
PILE EXCAVATION QUANTITIES

PILE EXCAVATION IN SOIL	15 LIN. FT.
PILE EXCAVATION NOT IN SOIL	15 LIN. FT.



SECTION A-A

* ELEVATIONS BETWEEN BRIDGE SEAT BUILD-UPS ARE TAKEN AT THIS POINT.



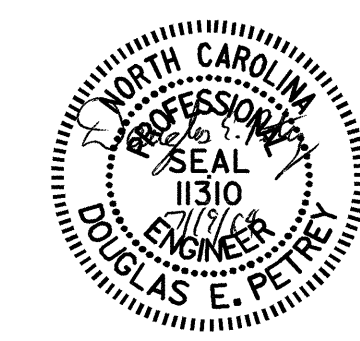
PARTIAL SECTION B-B

PROJECT NO. B-3690
RANDOLPH COUNTY
STATION: 17+41.00 -L-

SHEET 3 OF 3

STATE OF NORTH CAROLINA
DEPARTMENT OF TRANSPORTATION
RALEIGH

SUBSTRUCTURE END BENT No. 1



DRAWN BY : A. V. ROYAL DATE : 1/03
CHECKED BY : P. C. BREWER DATE : 8/03

REVISIONS						SHEET NO.
NO.	BY:	DATE:	NO.	BY:	DATE:	S-22
1			3			TOTAL SHEETS
2			4			37