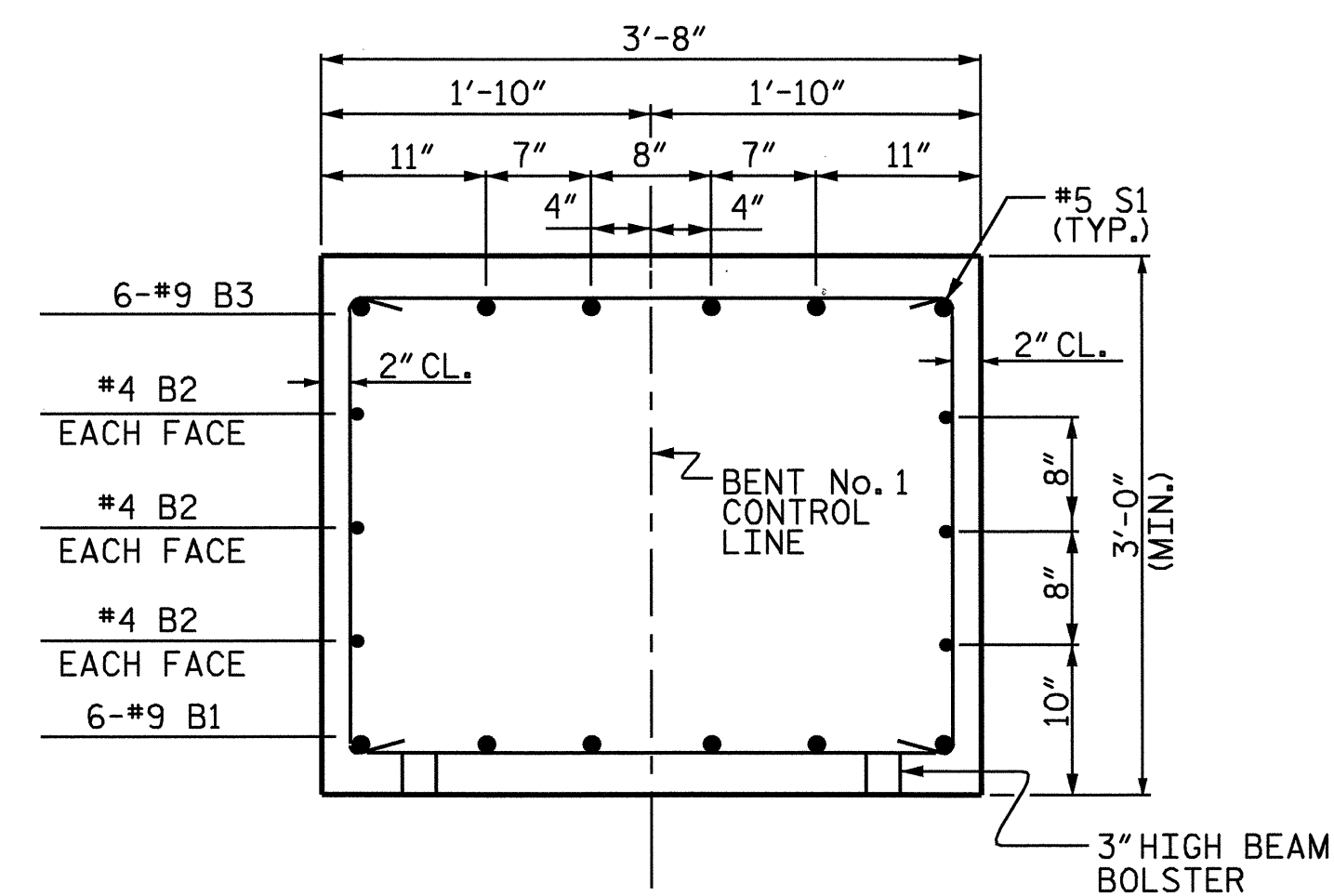
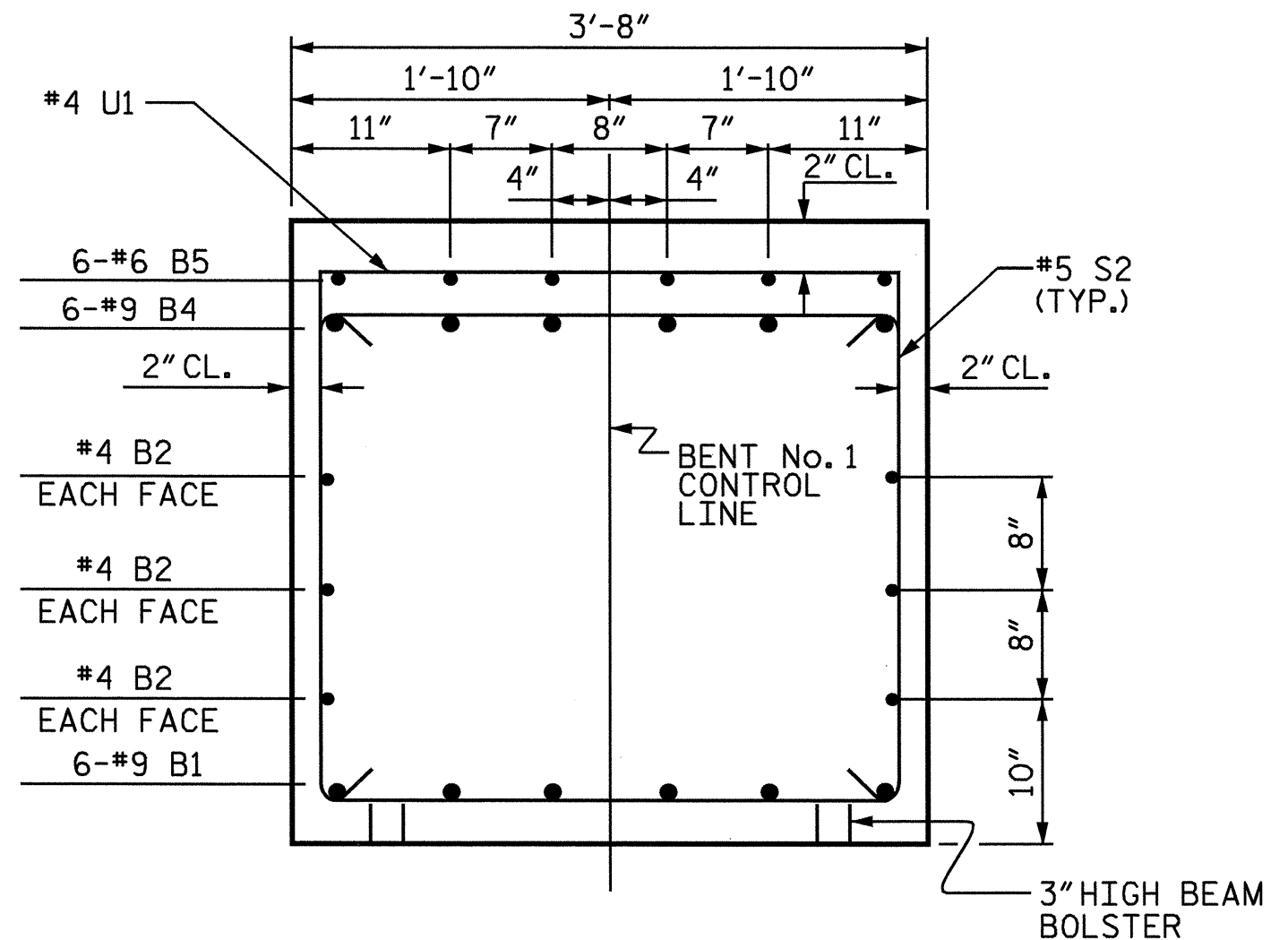


PLAN OF DRILLED PIERS & COLUMNS

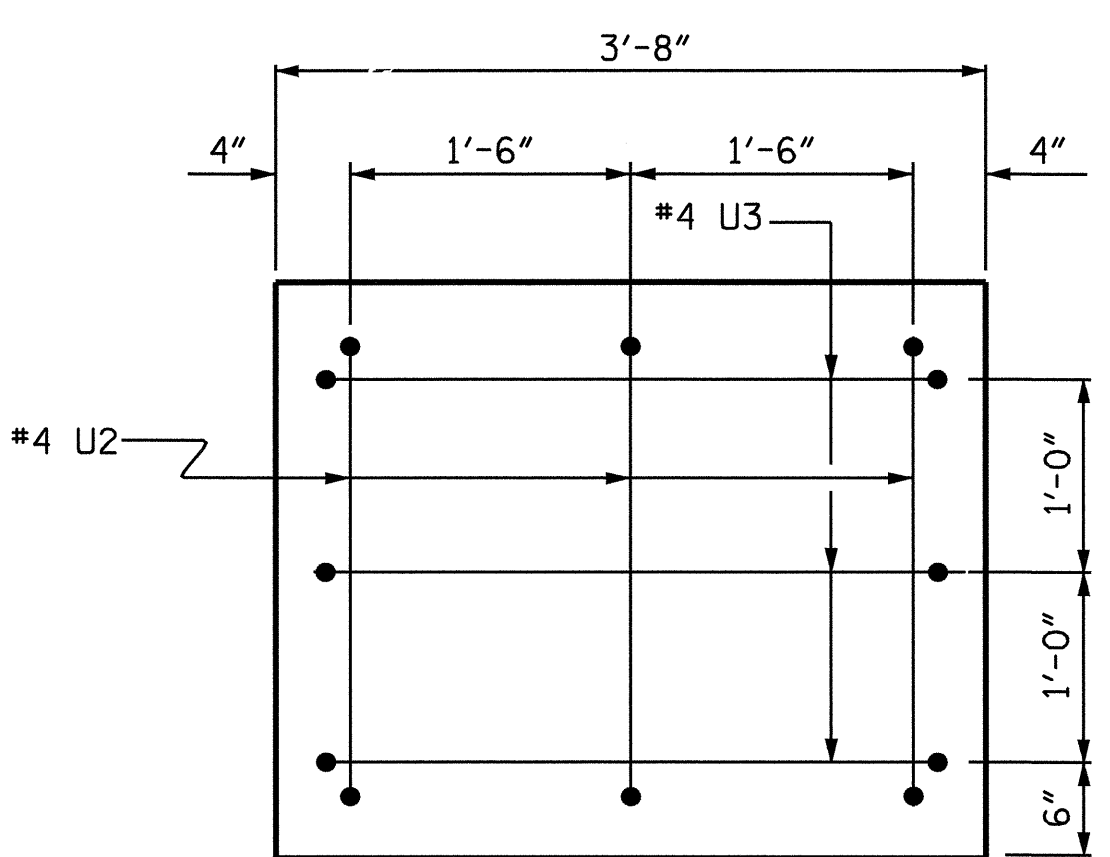
(REINFORCING STEEL AND DIMENSIONS ARE TYPICAL FOR EACH COLUMN AND DRILLED PIER)



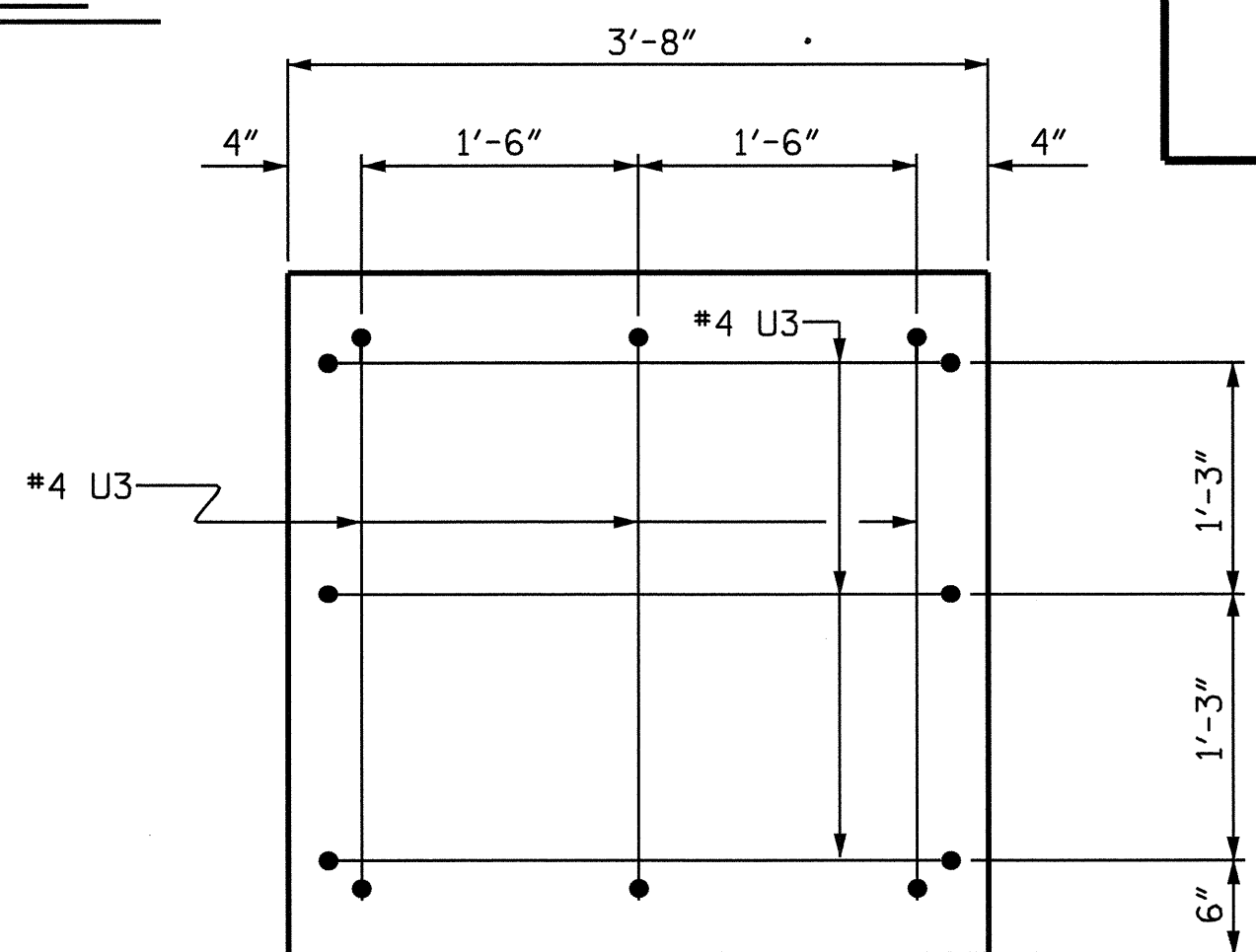
SECTION A-A



SECTION B-B

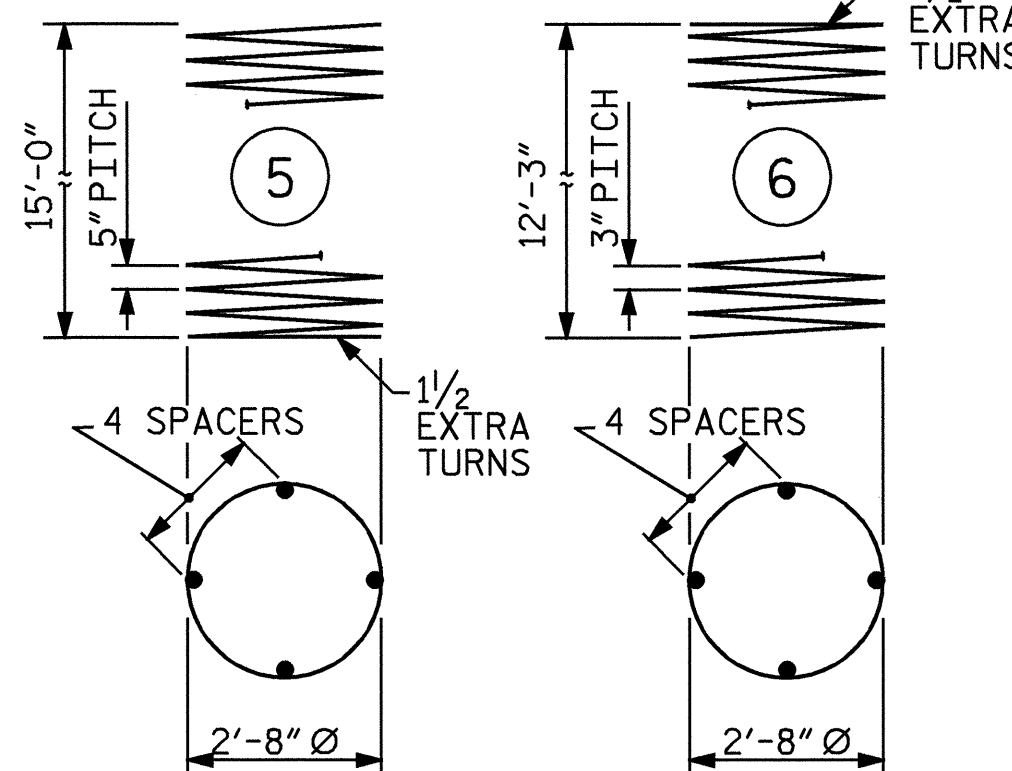
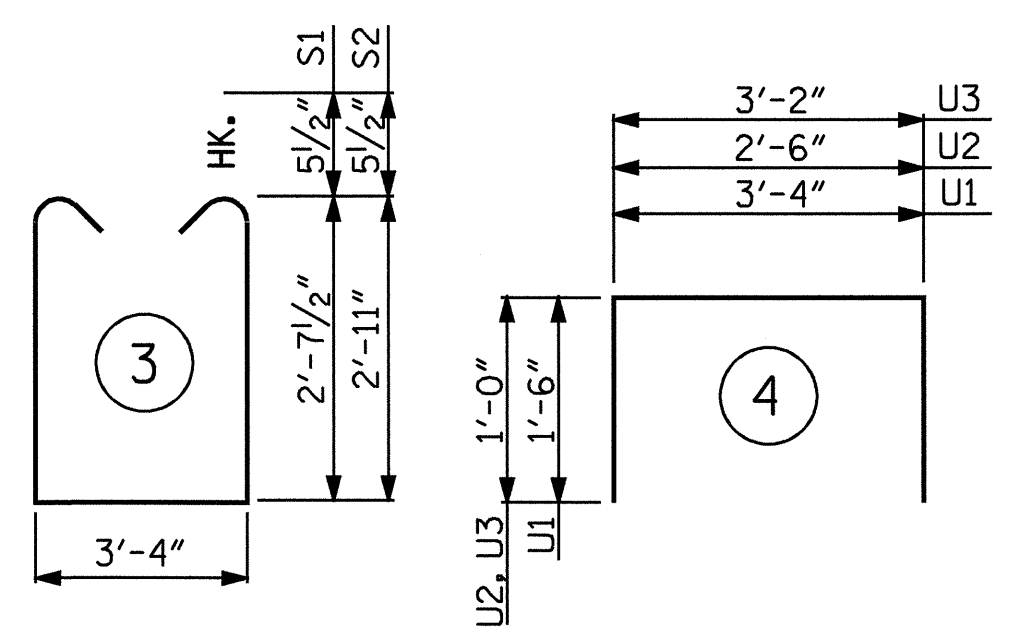
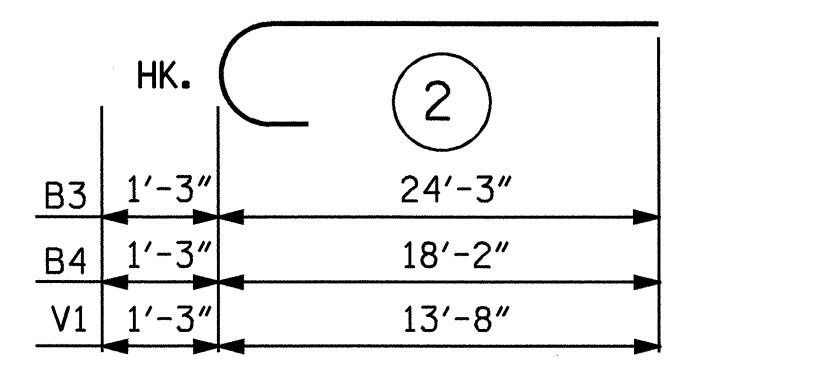
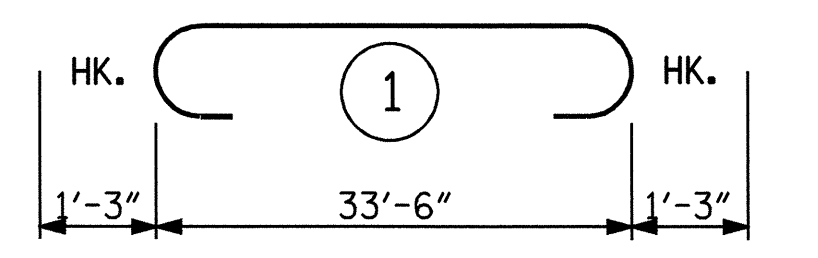


VIEW X-X



VIEW Y-Y

BAR TYPES



ALL BAR DIMENSIONS ARE OUT TO OUT.

BILL OF MATERIAL

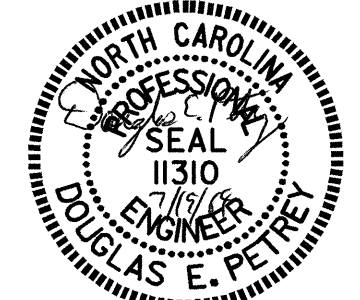
BENT No. 1					
BAR NO.	SIZE	TYPE	LENGTH	WEIGHT	
B1	6 9	1	36'-0"	734	
B2	12 4	STR.	18'-0"	144	
B3	6 9	2	25'-6"	520	
B4	6 9	2	19'-5"	396	
B5	6 6	STR.	3'-2"	29	
M1	24 9	STR.	22'-9"	1856	
S1	19 5	3	9'-6"	188	
S2	22 5	3	10'-1"	231	
U1	35 4	4	6'-4"	148	
U2	3 4	4	4'-6"	9	
U3	9 4	4	5'-2"	31	
V1	24 9	2	14'-11"	1217	
TOTAL REINFORCING STEEL				LBS.	5503
SP-1	2 *	5	312'-7"	652	
SP-2	2 **	6	420'-10"	562	
SPIRAL COLUMN REINFORCING STEEL				LBS.	1214
* THE SP-2 SPIRAL REINFORCING STEEL SHALL BE W20 OR D-20 COLD DRAWN WIRE OR #4 PLAIN OR DEFORMED BAR.					
* THE SP-1 SPIRAL REINFORCING STEEL SHALL BE W31 OR D-31 COLD DRAWN WIRE OR #5 PLAIN OR DEFORMED BAR.					
CLASS A CONCRETE BREAKDOWN					
POUR #2 (COLUMNS)				6.3 C.Y.	
POUR #3 (CAP)				15.2 C.Y.	
TOTAL				21.5 C.Y.	
DRILLED PIER QUANTITIES					
DRILLED PIER CONCRETE					
POUR #1 (DRILLED PIERS)				11.0 C.Y.	
3'-6" Ø DRILLED PIER NOT IN SOIL				18.0 FT.	
3'-6" Ø DRILLED PIER IN SOIL				13.0 FT.	
CSL TUBES				144.0 FT.	

PROJECT NO. B-3690
 RANDOLPH COUNTY
 STATION: 17+41.00 -L-
 SHEET 2 OF 2

STATE OF NORTH CAROLINA
 DEPARTMENT OF TRANSPORTATION
 RALEIGH

SUBSTRUCTURE
 BENT No. 1

REVISIONS						SHEET NO.
NO.	BY:	DATE:	NO.	BY:	DATE:	S-24
1			3			TOTAL
2			4			37



DRAWN BY: R. G. EMERSON DATE: 9/03
 CHECKED BY: S. B. WILLIAMS DATE: 10/03