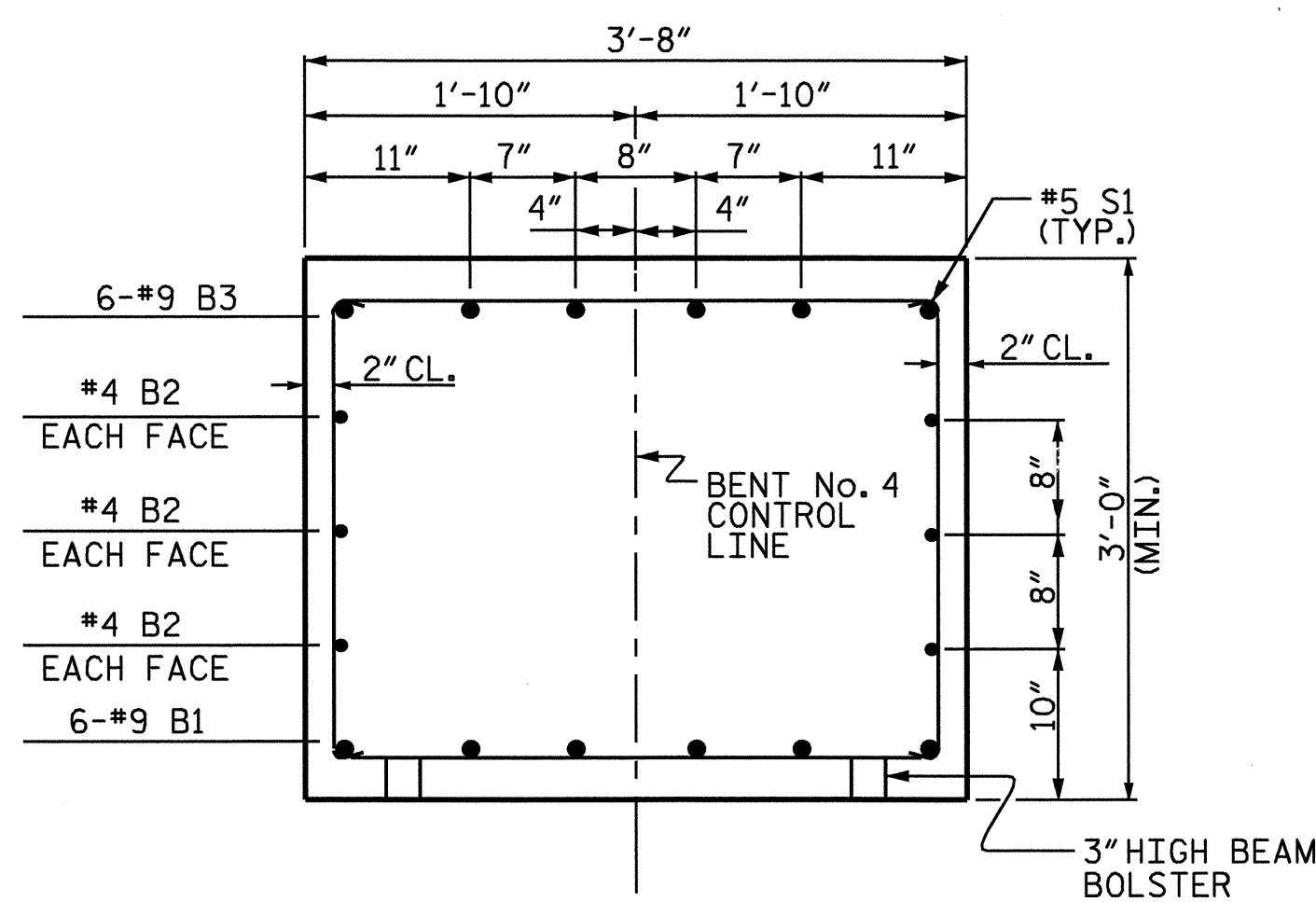
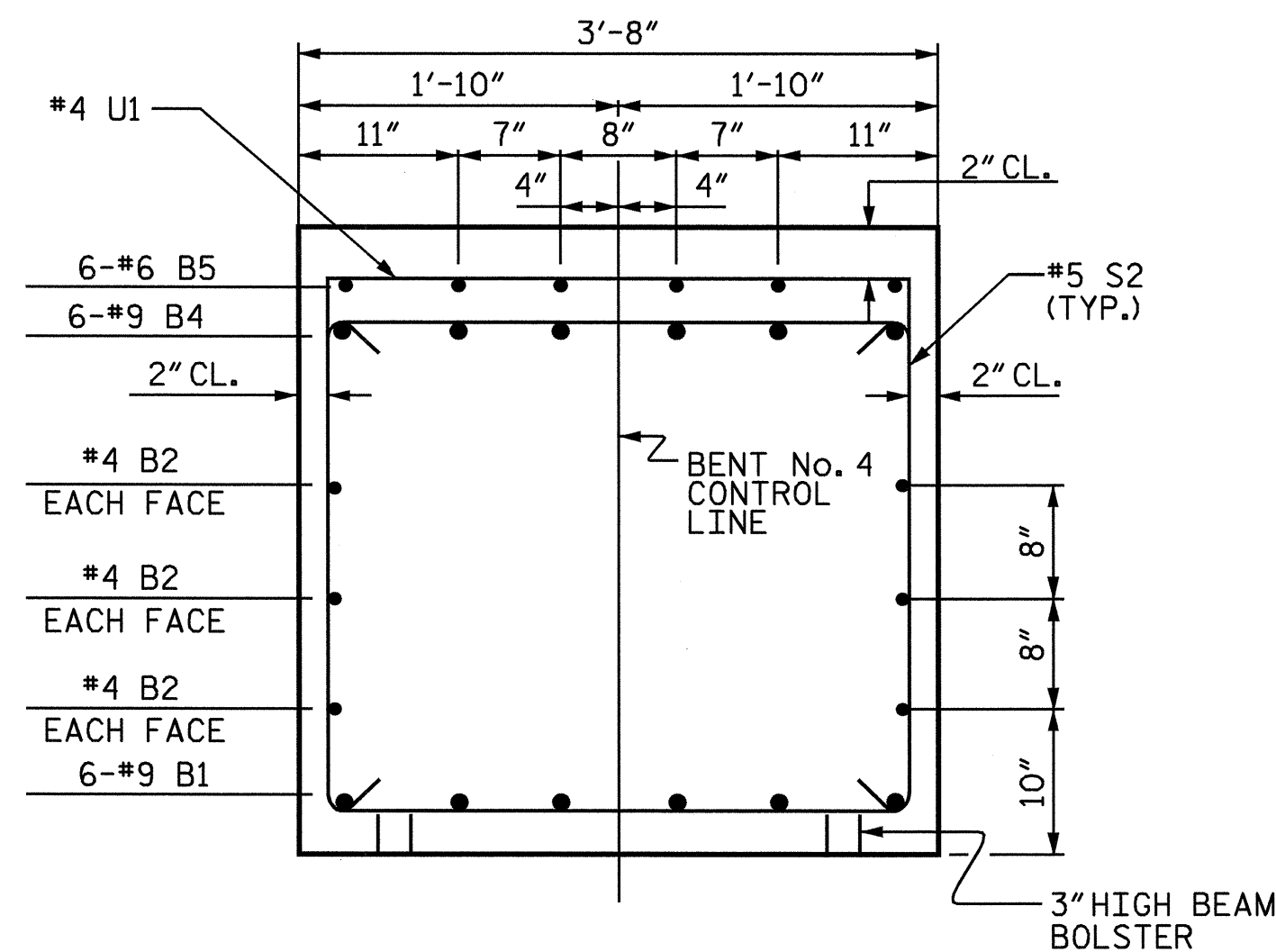


PLAN OF DRILLED PIERS & COLUMNS

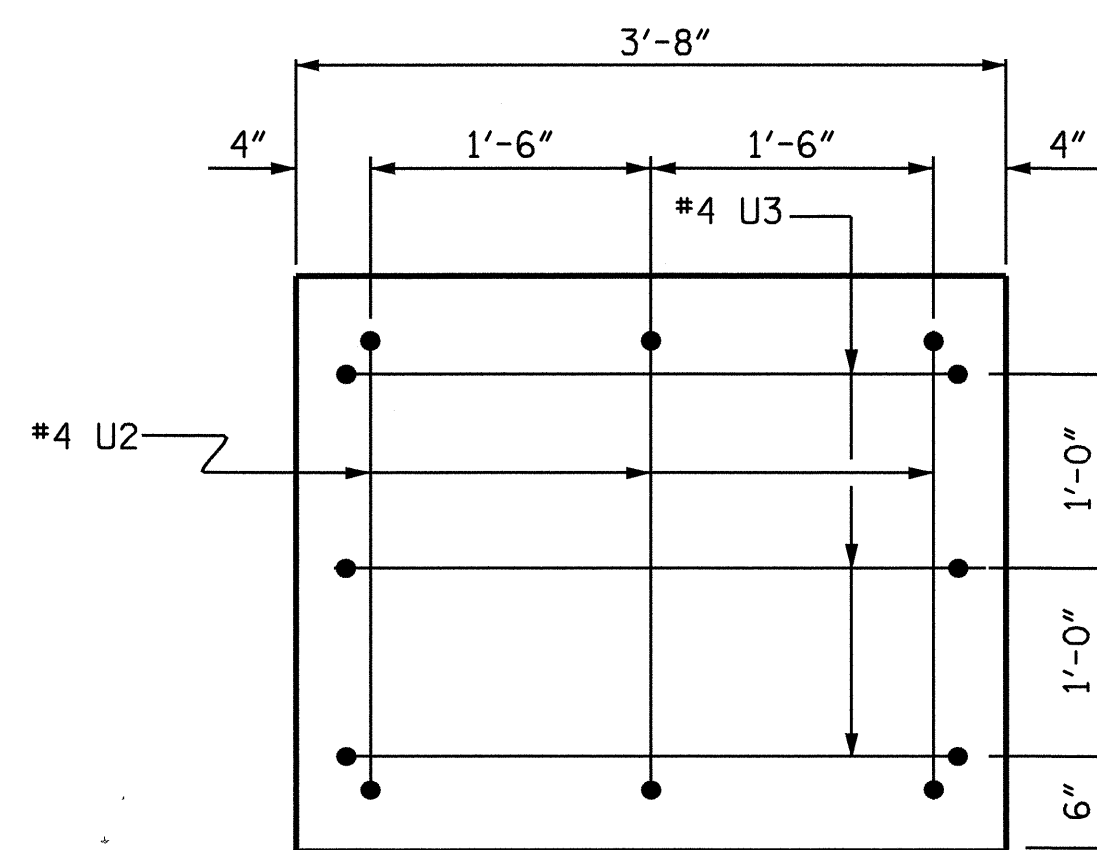
(REINFORCING STEEL AND DIMENSIONS ARE TYPICAL FOR EACH COLUMN AND DRILLED PIER)



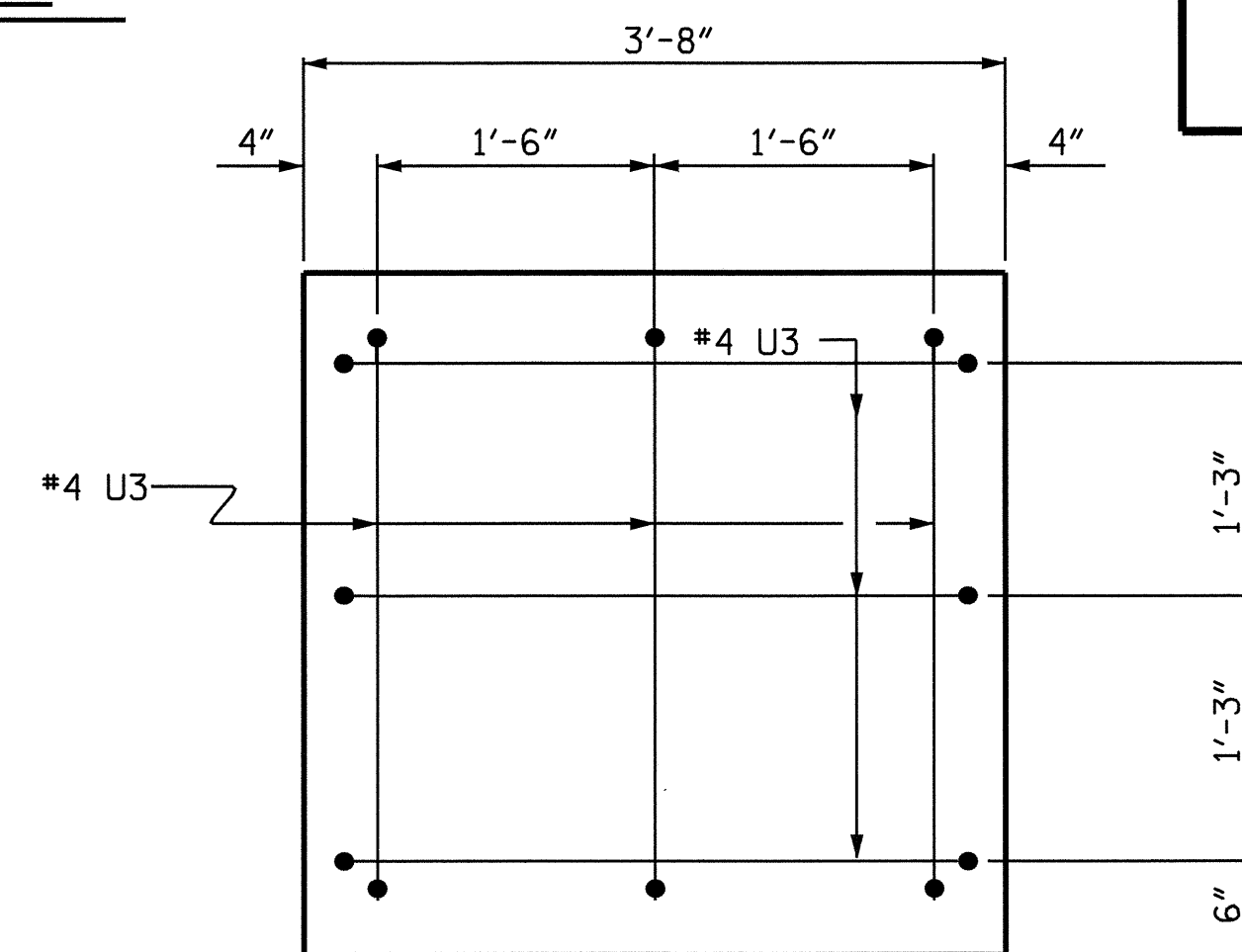
SECTION A-A



SECTION B-B

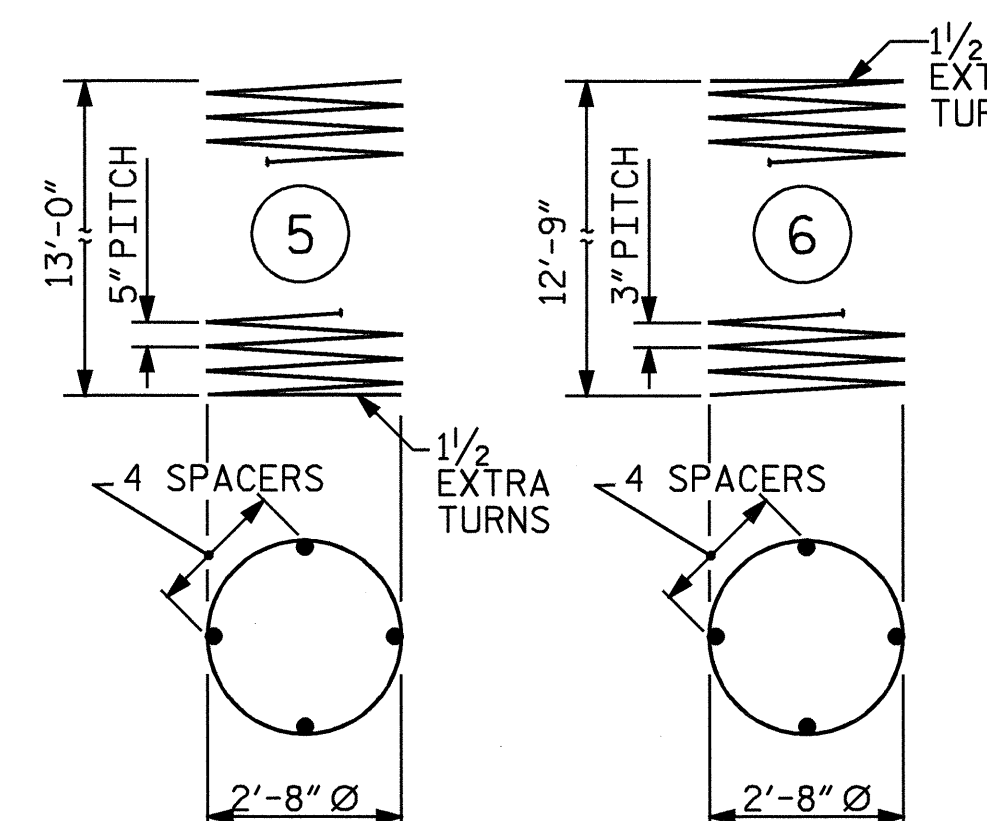
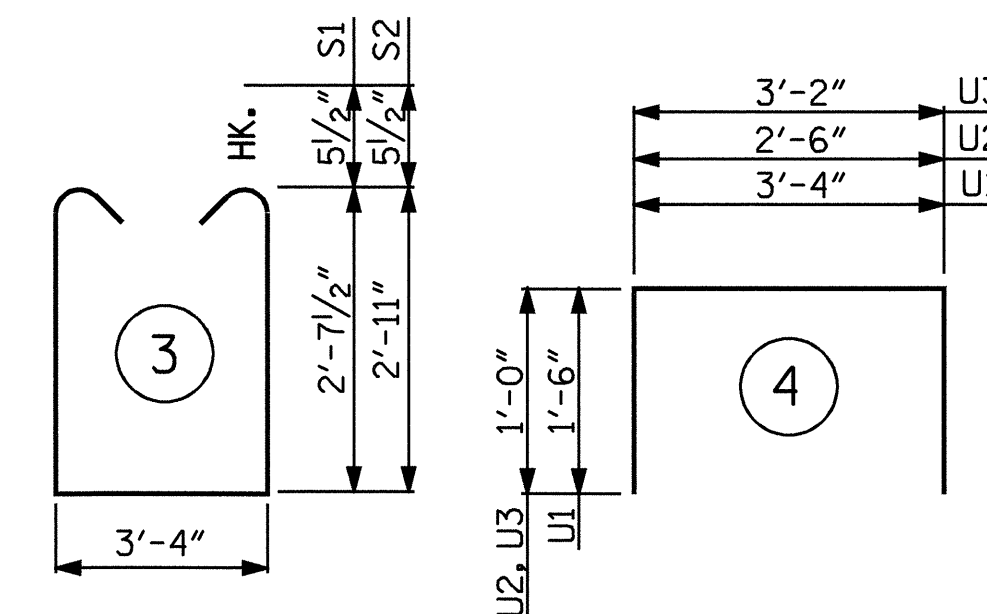
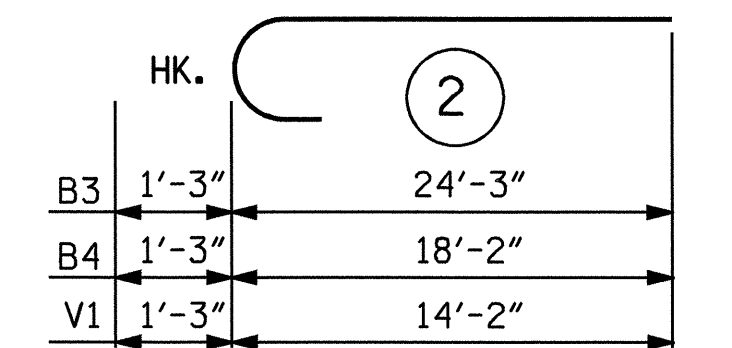
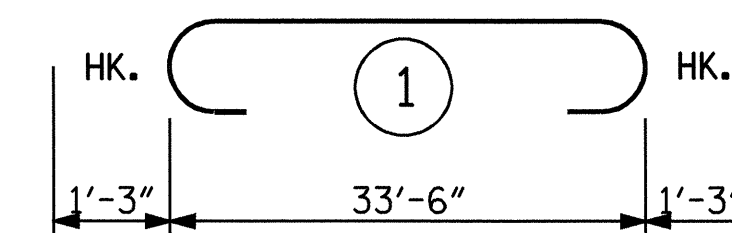


VIEW X-X



VIEW Y-Y

BAR TYPES



ALL BAR DIMENSIONS ARE OUT TO OUT.

BILL OF MATERIAL

BENT No. 4

BAR NO.	SIZE	TYPE	LENGTH	WEIGHT	
B1	6	9	1	36'-0"	734
B2	12	4	STR.	18'-0"	144
B3	6	9	2	25'-6"	520
B4	6	9	2	19'-5"	396
B5	6	6	STR.	3'-2"	29
M1	24	9	STR.	20'-9"	1693
S1	19	5	3	9'-6"	188
S2	22	5	3	10'-1"	231
U1	35	4	4	6'-4"	148
U2	3	4	4	4'-6"	9
U3	9	4	4	5'-2"	31
V1	24	9	2	15'-5"	1258
TOTAL REINFORCING STEEL				LBS.	5381
SP-1	2	*	5	271'-5"	566
SP-2	2	**	6	437'-4"	584
SPIRAL COLUMN REINFORCING STEEL				LBS.	1150

** THE SP-2 SPIRAL REINFORCING STEEL SHALL BE W20 OR D-20 COLD DRAWN WIRE OR #4 PLAIN OR DEFORMED BAR.

* THE SP-1 SPIRAL REINFORCING STEEL SHALL BE W31 OR D-31 COLD DRAWN WIRE OR #5 PLAIN OR DEFORMED BAR.

CLASS A CONCRETE BREAKDOWN

POUR #2 (COLUMNS)	6.5 C.Y.
POUR #3 (CAP)	15.2 C.Y.
TOTAL	21.7 C.Y.

DRILLED PIER QUANTITIES

DRILLED PIER CONCRETE	
POUR #1 (DRILLED PIERS)	9.6 C.Y.
3'-6" Ø DRILLED PIER NOT IN SOIL	19.0 FT.
3'-6" Ø DRILLED PIER IN SOIL	8.0 FT.
CSL TUBES	128.0 FT.

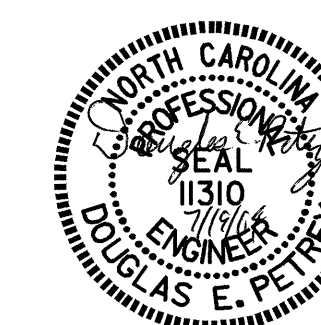
THE CONTRACTOR'S ATTENTION IS CALLED TO THE FACT THAT THE LONGITUDINAL REINFORCEMENT FOR THE DRILLED PIER IS DETAILED WITH 3'-0" OF EXTRA LENGTH

PROJECT NO. B-3690
RANDOLPH COUNTY
 STATION: 17+41.00 -L-

SHEET 2 OF 2

STATE OF NORTH CAROLINA
 DEPARTMENT OF TRANSPORTATION
 RALEIGH

SUBSTRUCTURE
 BENT No. 4



REVISIONS				SHEET NO.	
NO.	BY:	DATE:	NO.	BY:	DATE:
1			3		
2			4		
TOTAL SHEETS					37

DRAWN BY: R. G. EMERSON DATE: 9/03
 CHECKED BY: S. B. WILLIAMS DATE: 10/03