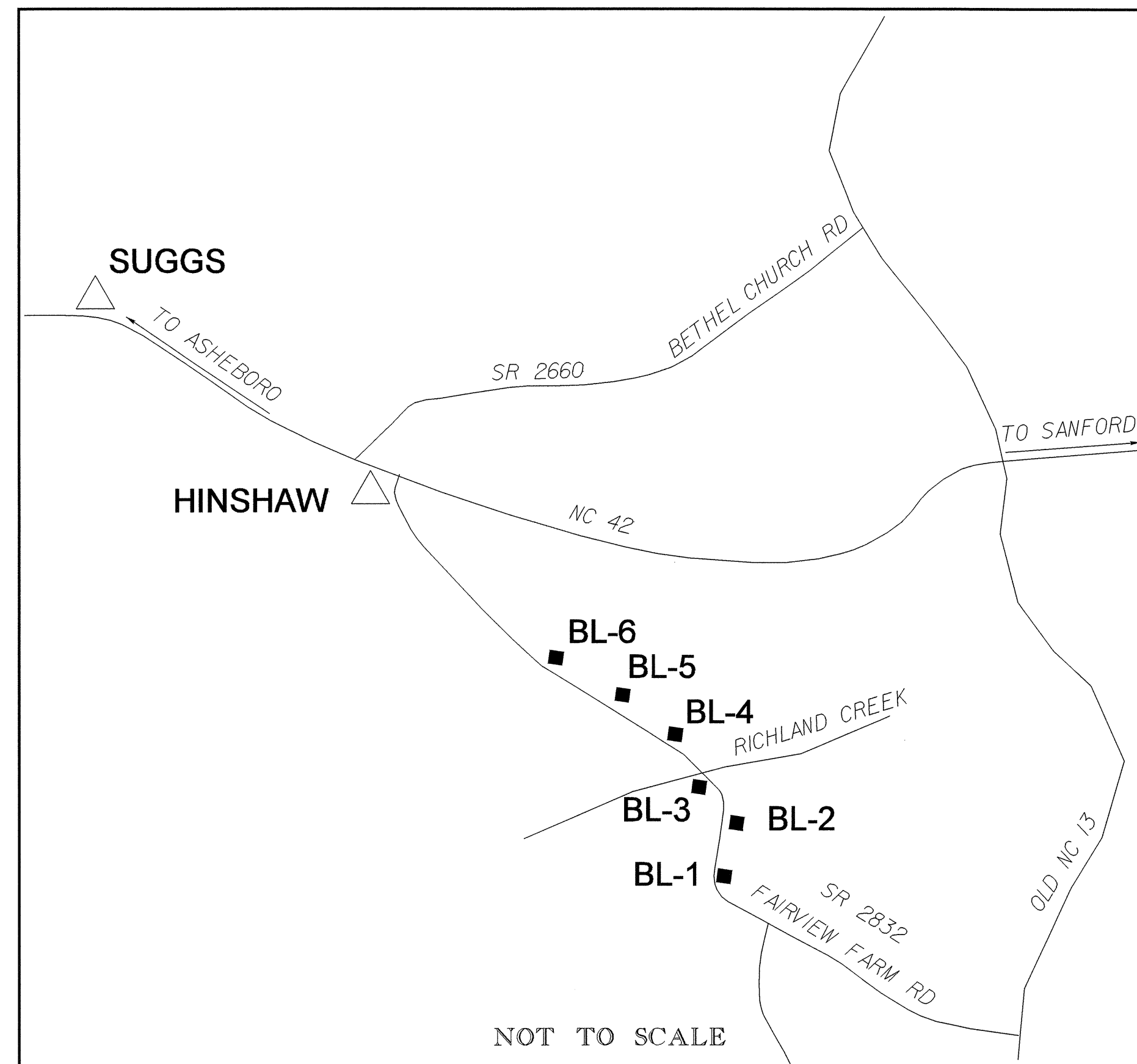


STATE	STATE PROJECT REFERENCE NO.	SHEET NO.	TOTAL SHEETS
N.C.	B-3506	1C	
LOCATION AND SURVEYS			

SURVEY CONTROL SHEET B-3506



NOTES

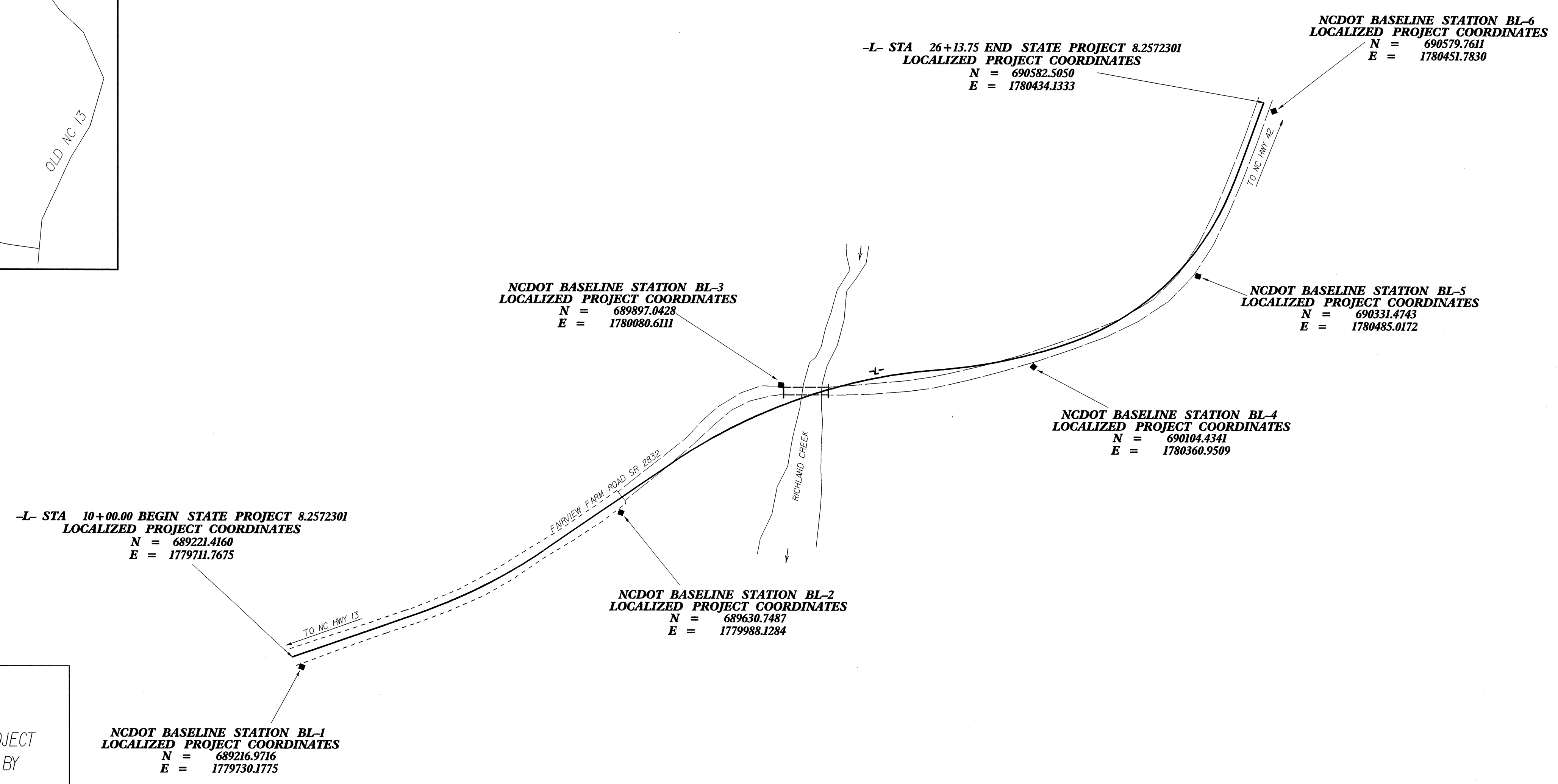
THE CONTROL DATA FOR THIS PROJECT CAN BE FOUND ELECTRONICALLY BY SELECTING "PROJECT CONTROL DATA" AT:
[HTTP://WWW.DOH.DOT.STATE.NC.US/PRECONSTRUCT/HIGHWAY/LOCATION/PROJECT/](http://www.doh.dot.state.nc.us/preconstruct/highway/location/project/)

THE FILES TO BE FOUND ARE AS FOLLOWS:
 B3506_LS_CONTROL_030326.TXT

SITE CALIBRATION INFORMATION HAS NOT BEEN PROVIDED FOR THIS PROJECT. IF FURTHER INFORMATION IS NEEDED, PLEASE CONTACT THE LOCATION AND SURVEYS UNIT.

DATUM DESCRIPTION

THE LOCALIZED COORDINATE SYSTEM DEVELOPED FOR THIS PROJECT IS BASED ON THE STATE PLANE COORDINATES ESTABLISHED BY NCGS FOR MONUMENT "HINSHAW" WITH NAD 83 STATE PLANE GRID COORDINATES OF NORTHING: 696486.8911(ft) EASTING: 1780134.5498(ft) THE AVERAGE COMBINED GRID FACTOR USED ON THIS PROJECT (GROUND TO GRID) IS: 0.9998726 THE N.C. LAMBERT GRID BEARING AND LOCALIZED HORIZONTAL GROUND DISTANCE FROM "HINSHAW" TO -L- STATION 10+00 IS S 3° 19' 49.15" W 7,277.7656FT. ALL LINEAR DIMENSIONS ARE LOCALIZED HORIZONTAL DISTANCES VERTICAL DATUM USED IS NGVD 29



◆ INDICATES CONTROL MONUMENTS SET FOR HORIZONTAL PROJECT CONTROL BY THE NCDOT LOCATION AND SURVEYS UNIT.

PROJECT CONTROL ESTABLISHED USING EXISTING NCGS MONUMENTS.

THIS SURVEY WAS DONE CONVENTIONALLY WITHOUT USING GLOBAL POSITIONING SYSTEMS

NOTE: DRAWING NOT TO SCALE