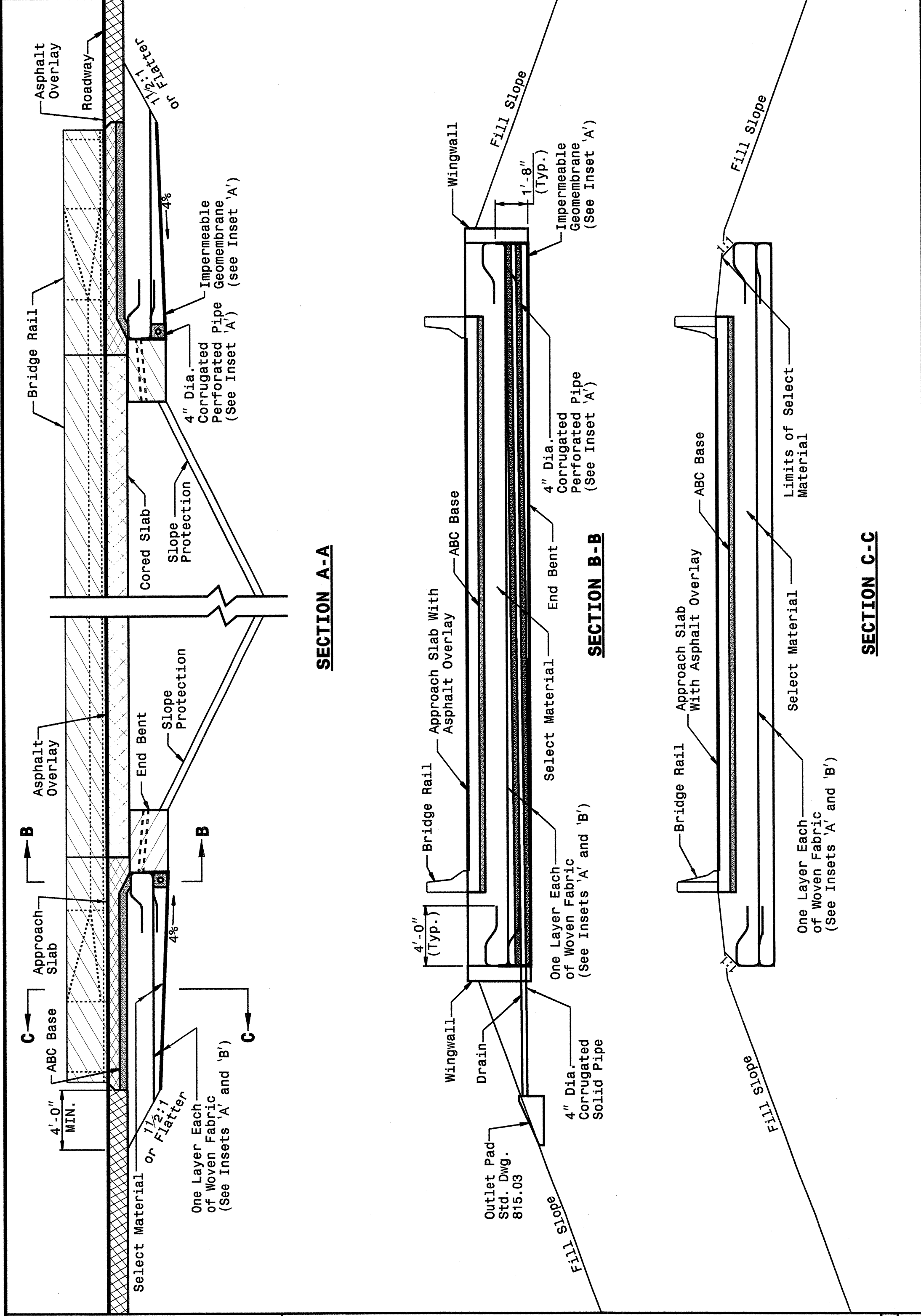
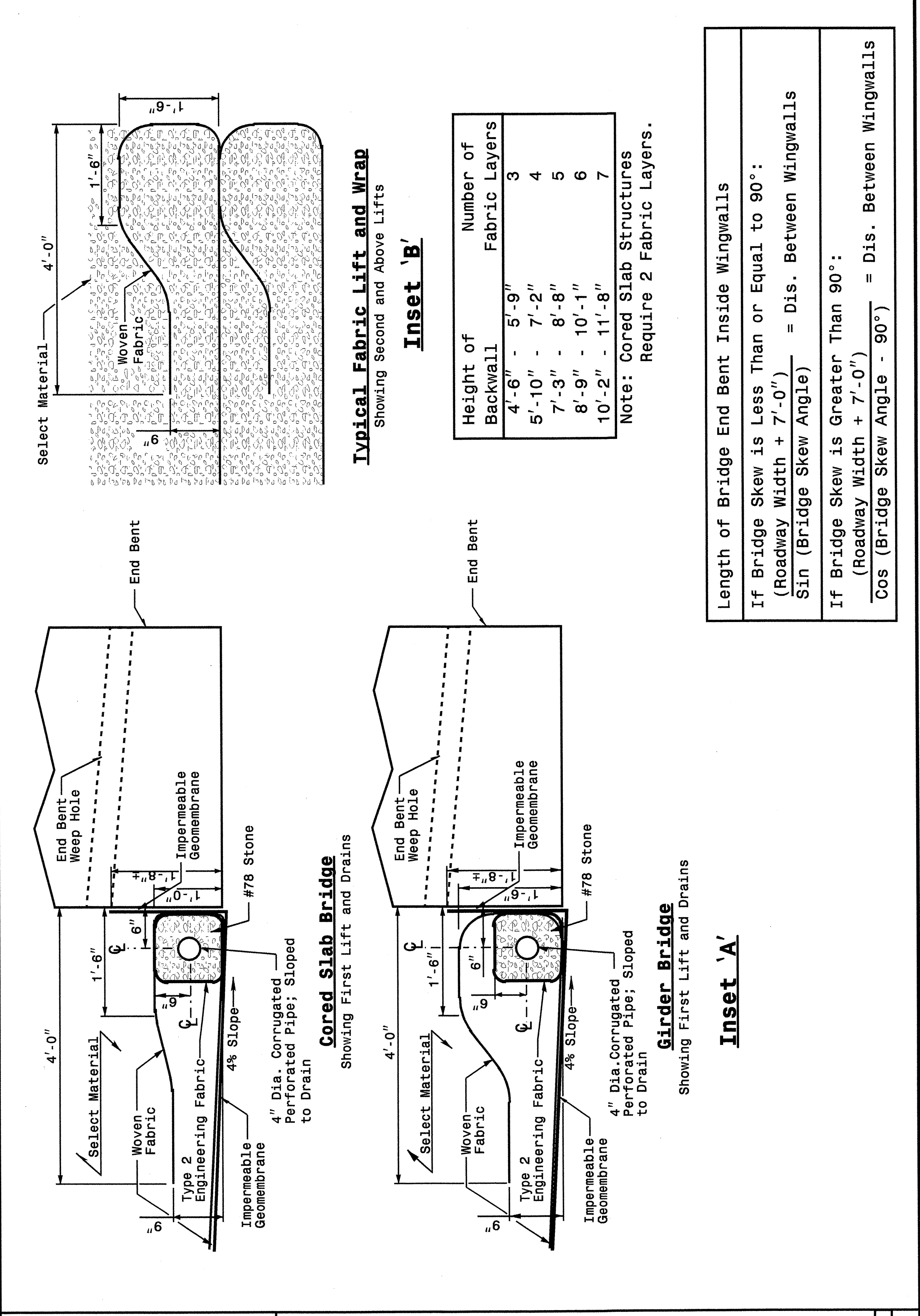


STATE OF NORTH CAROLINA DEPT. OF TRANSPORTATION DIVISION OF HIGHWAYS RALEIGH, N.C.
 ENGLISH DETAIL DRAWING FOR CORED SLAB BRIDGES
REINFORCED BRIDGE APPROACH FILLS
 SHEET 3 OF 4
422D10



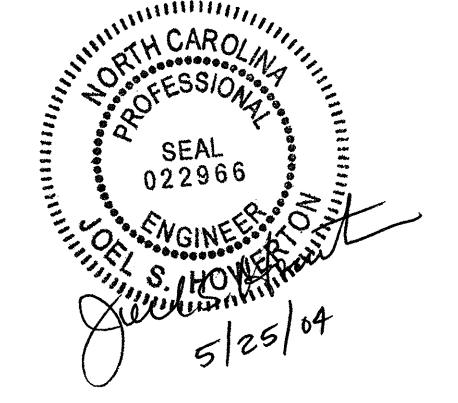
STATE OF NORTH CAROLINA DEPT. OF TRANSPORTATION DIVISION OF HIGHWAYS RALEIGH, N.C.
 ENGLISH DETAIL DRAWING FOR CORED SLAB BRIDGES
REINFORCED BRIDGE APPROACH FILLS
 SHEET 3 OF 4
422D10

STATE OF NORTH CAROLINA DEPT. OF TRANSPORTATION DIVISION OF HIGHWAYS RALEIGH, N.C.
 ENGLISH DETAIL DRAWING FOR INSETS AND CHARTS
REINFORCED BRIDGE APPROACH FILLS
 SHEET 4 OF 4
422D10



STATE OF NORTH CAROLINA DEPT. OF TRANSPORTATION DIVISION OF HIGHWAYS RALEIGH, N.C.
 ENGLISH DETAIL DRAWING FOR INSETS AND CHARTS
REINFORCED BRIDGE APPROACH FILLS
 SHEET 4 OF 4
422D10

Length of Bridge End Bent Inside Wingwalls
 If Bridge Skew is Less Than or Equal to 90°:
 (Roadway Width + 7'-0") / Sin (Bridge Skew Angle) = Dis. Between Wingwalls
 If Bridge Skew is Greater Than 90°:
 (Roadway Width + 7'-0") / Cos (Bridge Skew Angle - 90°) = Dis. Between Wingwalls



DESIGN SERVICES UNIT
 STANDARDS AND SPECIAL DESIGN
 Office 919-250-4128 FAX 919-250-4119
SEE PLATE FOR TITLE
 ORIGINAL BY: 2002 STANDARDS DATE: 01-15-02
 MODIFIED BY: E.E. WARD DATE: 03-26-03
 CHECKED BY: [Signature] DATE: 4-12-04
 FILE SPEC.: stds/02stdstdetails/english/422d10.dgn

07-APR-2004 16:52
 W:\Spec\01\Details\stdstdetails\stdstd\stdstd\02stdstd\0422d10.dgn
 AT 05212260