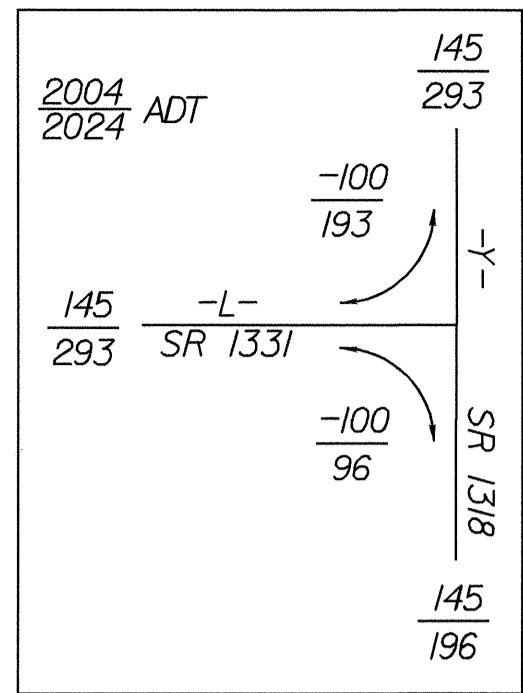
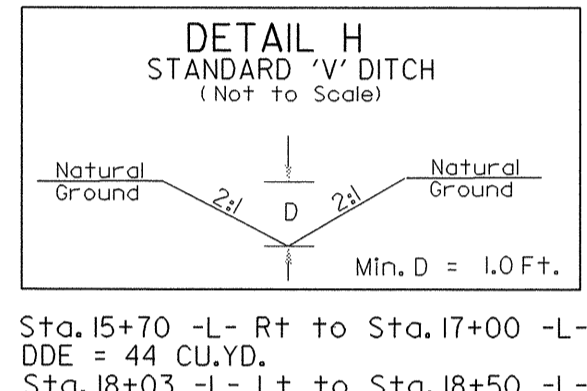
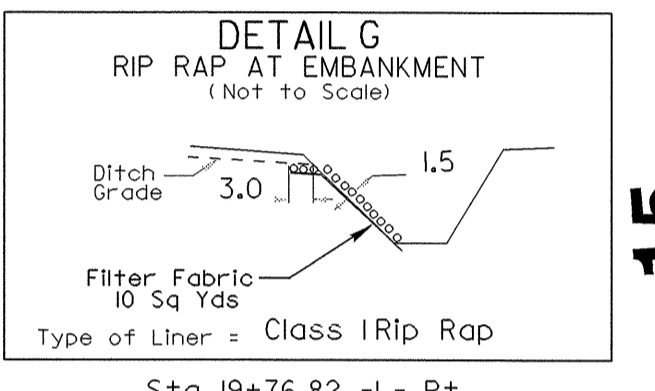
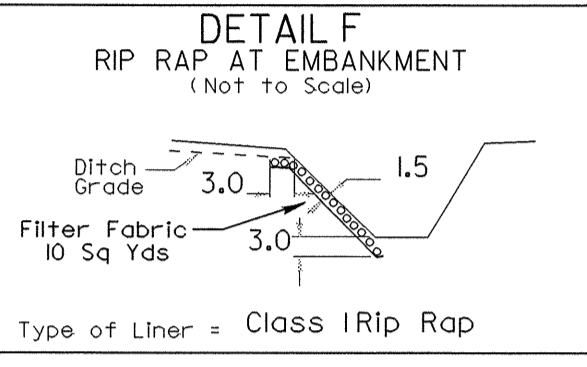
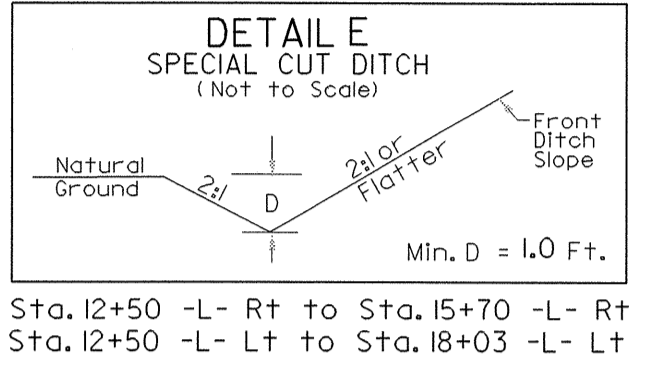
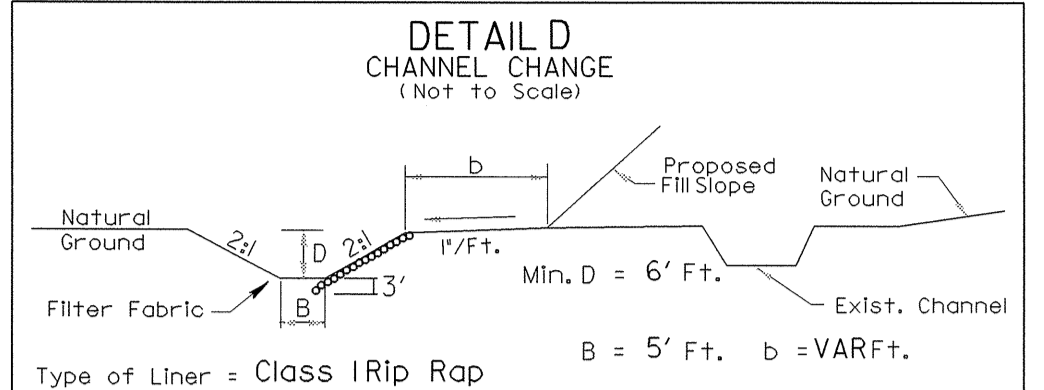
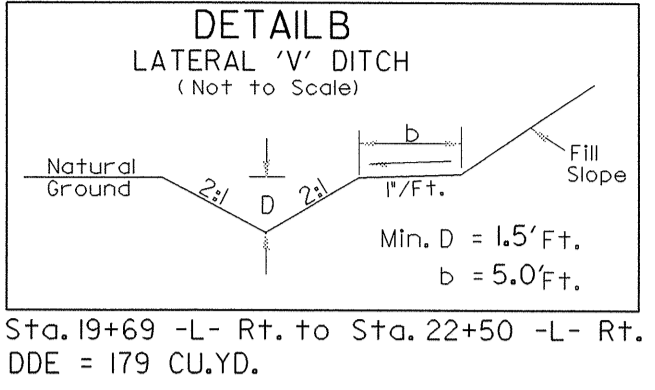
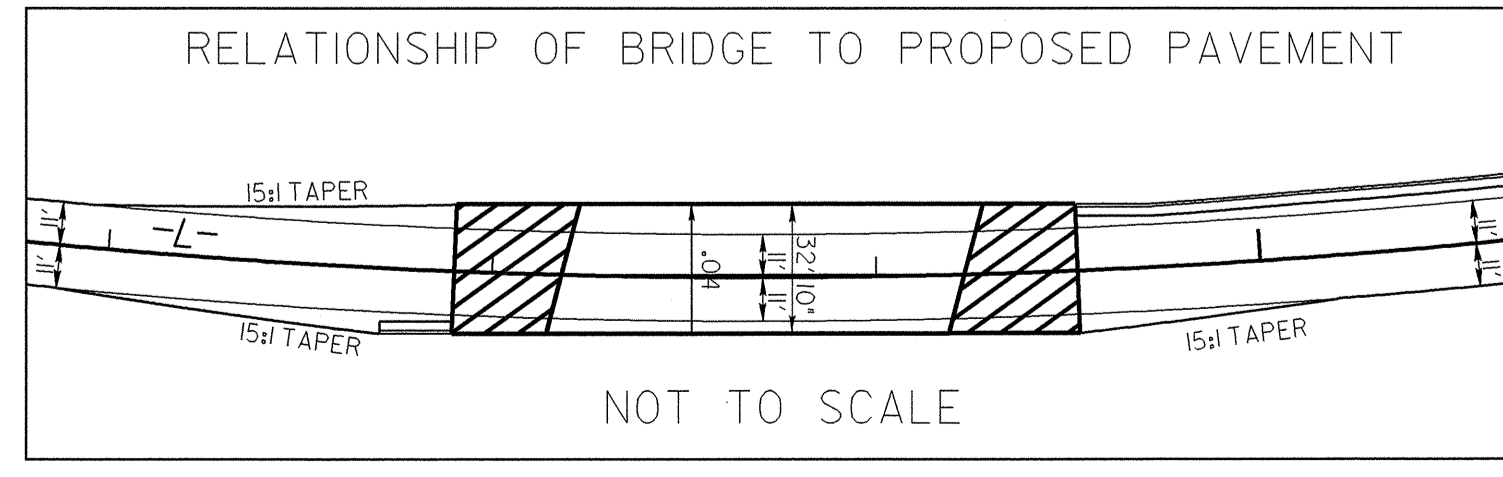
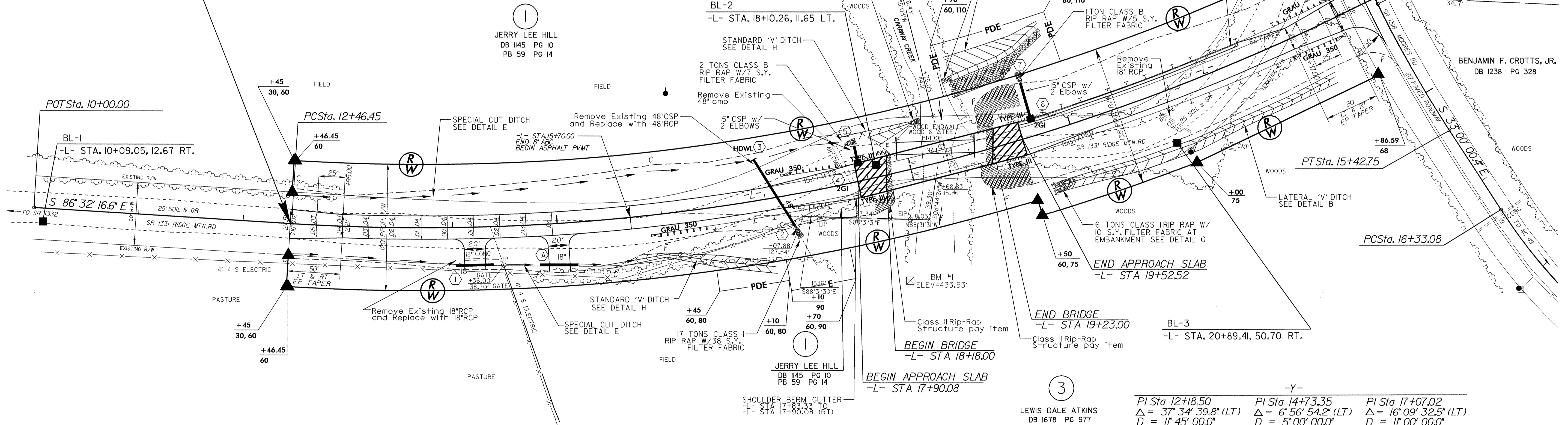


****DESIGN EXCEPTION REQUIRED FOR HORIZONTAL STOPPING SIGHT DISTANCE (50 MPH).**



STA 23+04.81 -L- END STATE PROJECT B-3504

STA 12+45.00 -L- BEGIN STATE PROJECT B-3504



-L-	-Y-	-R-
PI Sta 12+18.50	PI Sta 14+73.35	PI Sta 17+07.02
$\Delta = 37' 34' 39.8''$ (LT)	$\Delta = 6' 56' 54.2''$ (LT)	$\Delta = 16' 09' 32.5''$ (LT)
$D = 1' 45' 00.0''$	$D = 5' 00' 00.0''$	$D = 1' 00' 00.0''$
$L = 319.81'$	$L = 138.97'$	$L = 146.90'$
$T = 165.89'$	$T = 69.57'$	$T = 73.94'$
$R = 487.62'$	$R = 1,45.92'$	$R = 520.87'$

FOR -L- PROFILE SEE SHEET 5
FOR STRUCTURE PLANS SEE SHEET S-1 THRU S-24

REVISIONS

R/W REV. TEMP. CONST. EASEMENT ADDED ON PARCEL 3. AHF 2-15-05.

15-FEB-2005 08:27
R:\proj\B3504\ahfisher

2
JASON T. DRIVER
DB 1603 PG 1452
PB 58 PG 76

-L-
PI Sta 17+73.27
 $\Delta = 29' 30' 49.6''$ (LT)
 $D = 2' 51' 53.2''$
 $L = 1,030.23'$
 $T = 526.81'$
 $R = 2,000.00'$
Se = See Plans
** V = 50 MPH