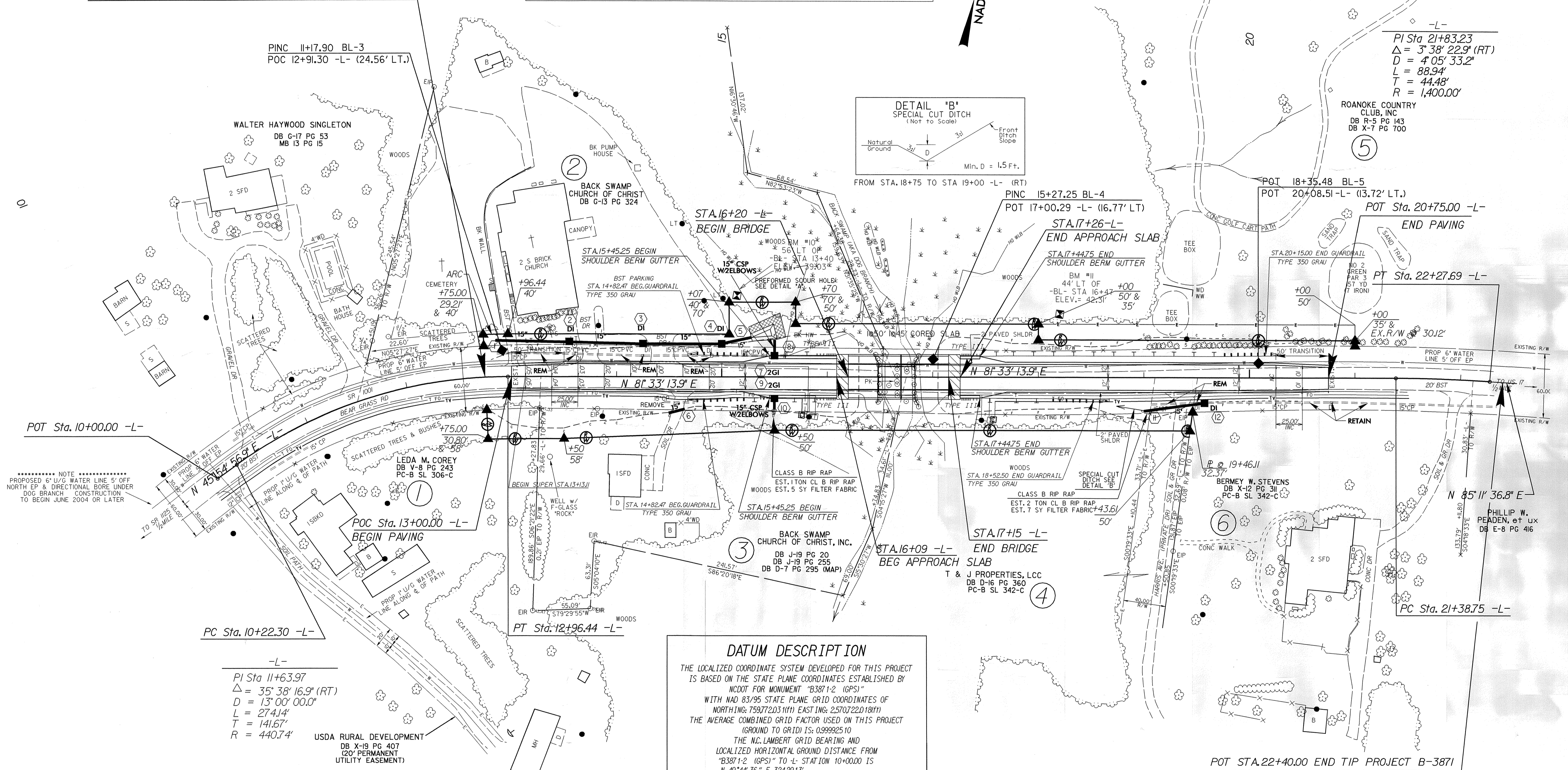


SEE SHEET 5 FOR PROFILE

SEE STRUCTURE PLANS SHEETS S-1 THRU S-16

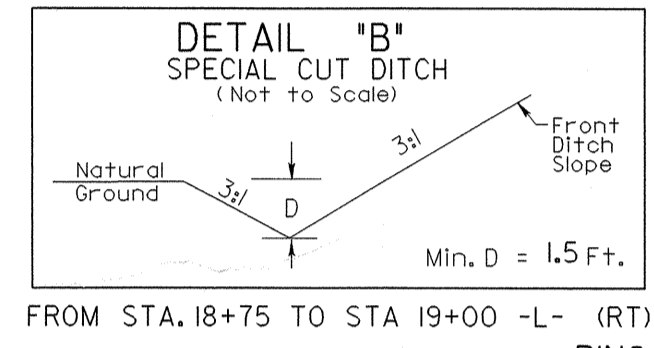
r/w revised 12/1/04 GBS

POT STA. 12+75.00 BEGIN TIP PROJECT B-3871



PI Sta 21+83.23  
 $\Delta = 3' 38' 22.9''$  (RT)  
 $D = 4' 05' 33.2''$   
 $L = 88.94'$   
 $T = 44.48'$   
 $R = 1,400.00'$

ROANOKE COUNTRY CLUB, INC  
 DB R-5 PG 143  
 DB X-7 PG 700



**DATUM DESCRIPTION**

THE LOCALIZED COORDINATE SYSTEM DEVELOPED FOR THIS PROJECT IS BASED ON THE STATE PLANE COORDINATES ESTABLISHED BY NCDOT FOR MONUMENT "B3871-2 (GPS)" WITH NAD 83/95 STATE PLANE GRID COORDINATES OF NORTHING: 75977203.1111 EASTING: 25707220.181111 THE AVERAGE COMBINED GRID FACTOR USED ON THIS PROJECT (GROUND TO GRID) IS: 0.999925 10 THE N.C. LAMBERT GRID BEARING AND LOCALIZED HORIZONTAL GROUND DISTANCE FROM "B3871-2 (GPS)" TO -L- STATION 10+00.00 IS N 49°44'36" E, 324.2913'. ALL LINEAR DIMENSIONS ARE LOCALIZED HORIZONTAL DISTANCES VERTICAL DATUM USED IS NAVD 88



POT STA. 22+40.00 END TIP PROJECT B-3871

REVISIONS  
 R/W REVISION: REVISED STA. & OFFSETS AS PER ROW BRANCH'S SUBMITTAL DATED 9/14/2004 WTB 10/29/2004 GBS 12/9/04

25-OCT-2004 09:21  
 P:\Roadway\B-3871-RDY\_PSH4.dgn  
 GBS