

BILL OF MATERIAL
BENT No. 1

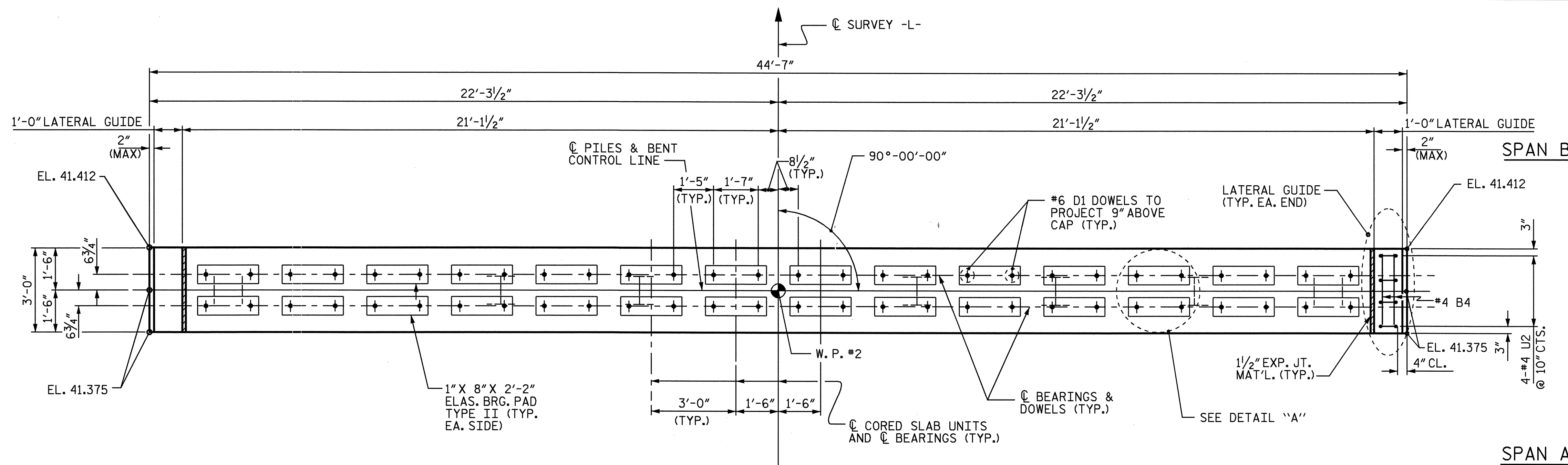
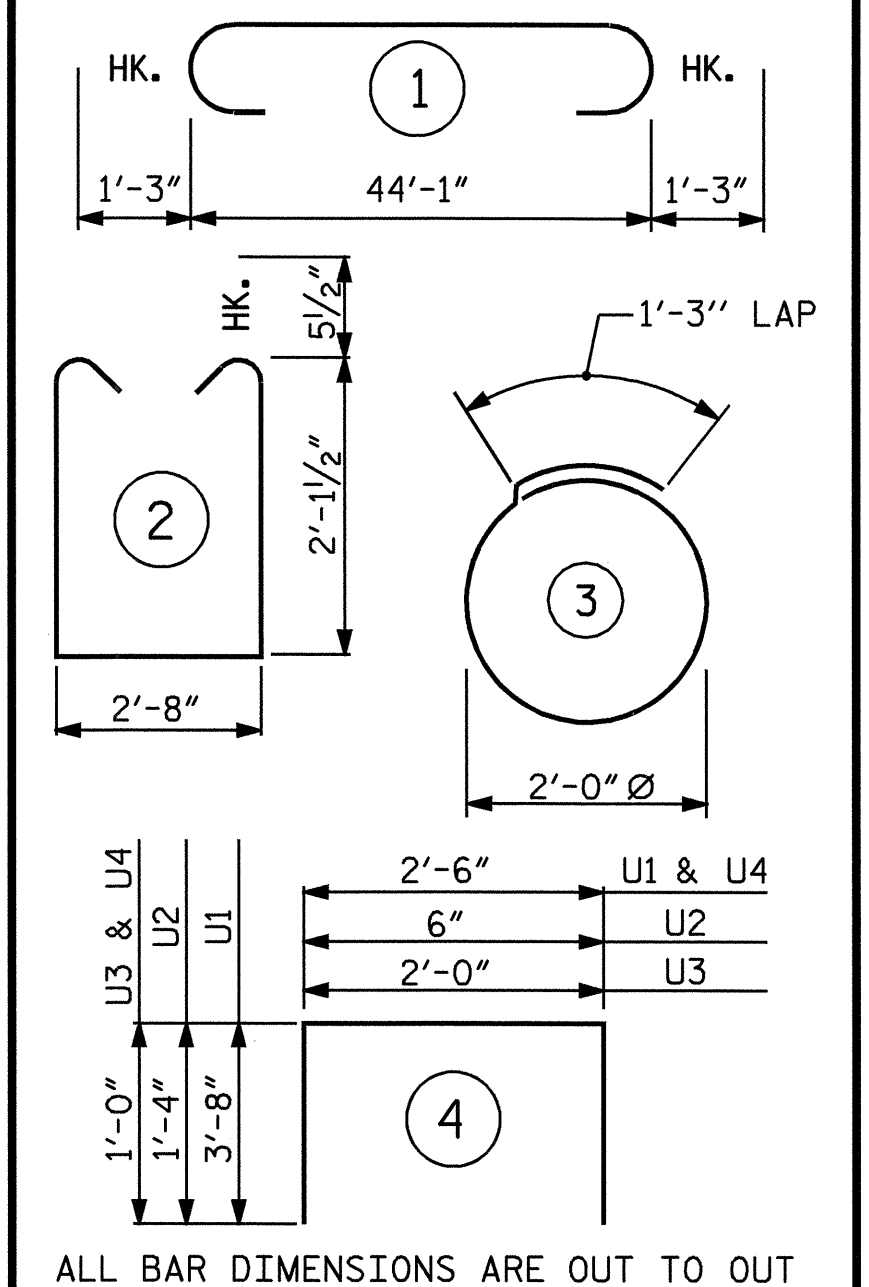
BAR NO.	SIZE	TYPE	LENGTH	WEIGHT	
B1	4	9	1	46'-7"	634
B2	16	4	STR	23'-4"	249
B3	4	9	STR	44'-3"	602
B4	15	4	STR	2'-8"	27
D1	56	6	STR	1'-6"	126
S1	42	5	2	7'-10"	343
S2	14	4	3	7'-7"	71
U1	2	9	4	9'-10"	67
U2	8	4	4	3'-2"	17
U3	6	4	4	4'-0"	16
U4	6	4	4	4'-6"	18
REINFORCING STEEL				LBS.	2170

CLASS A CONCRETE BREAKDOWN:

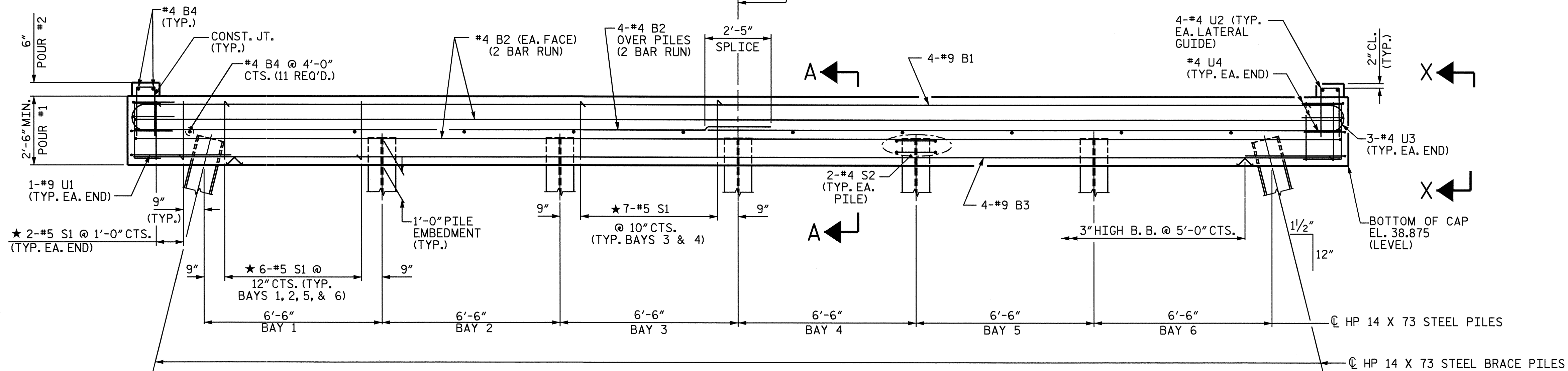
POUR #1 (CAP)	12.5 C.Y.
POUR #2 (LATERAL GUIDE)	0.1 C.Y.
TOTAL	12.6 C.Y.

HP 14 X 73 STEEL PILES:
No. 7 LIN FT. 560

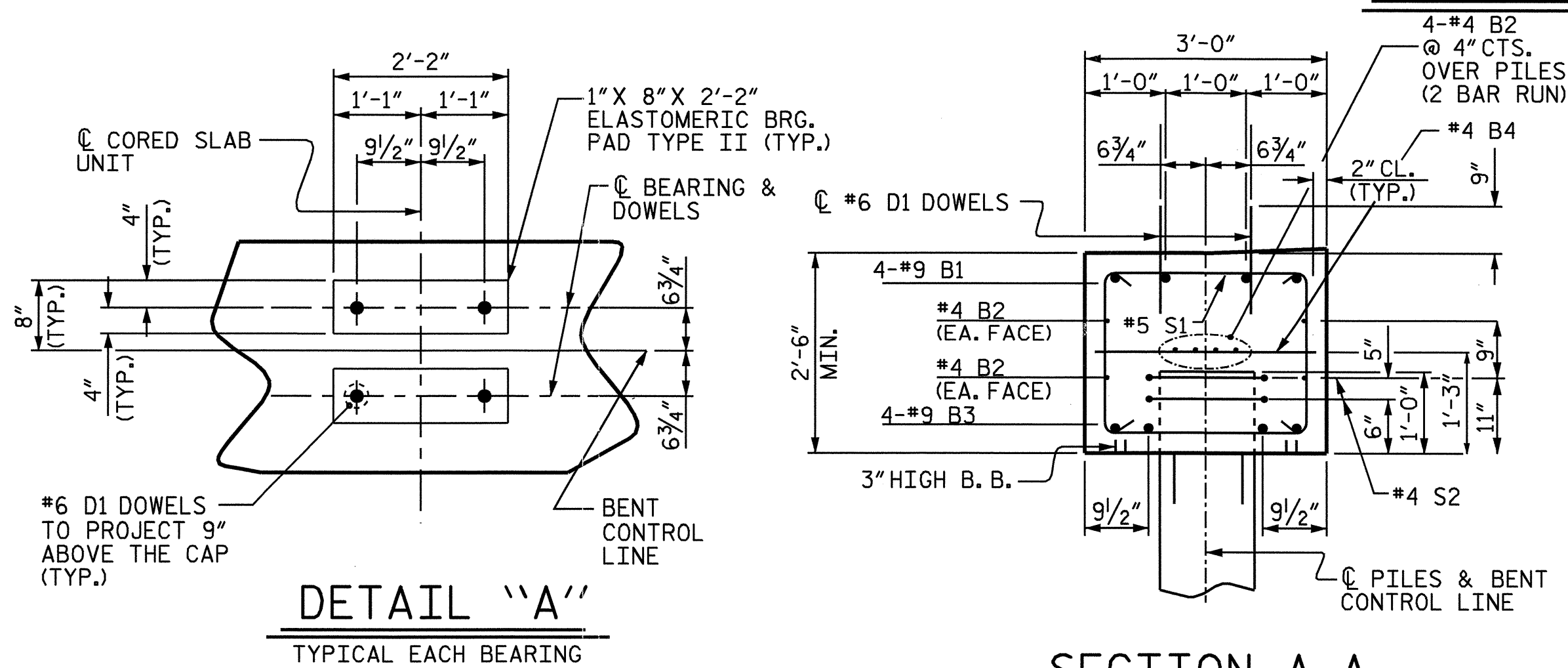
BAR TYPES



PLAN



ELEVATION



DETAIL "A"

TYPICAL EACH BEARING

SECTION A-A

VIEW X-X

NOTES:

STIRRUPS IN CAP MAY BE SHIFTED AS NECESSARY TO CLEAR DOWELS.

THE LATERAL GUIDES ARE NOT TO BE POURED UNTIL AFTER THE CORED SLAB UNITS ARE IN PLACE.

* INVERT ALTERNATE STIRRUPS AS SHOWN.

FOR PILE SPLICE DETAILS, SEE END BENT NO. 1, SHEET 2 OF 2.

THE STEEL PILES SHALL BE GALVANIZED IN ACCORDANCE WITH SECTION 1076 OF THE STANDARD SPECIFICATIONS. FOR GALVANIZING STEEL PILES, SEE SPECIAL PROVISIONS.



PROJECT NO. B-3871
MARTIN COUNTY
STATION: 16+67.50 -L-

STATE OF NORTH CAROLINA
DEPARTMENT OF TRANSPORTATION
RALEIGH

SUBSTRUCTURE
BENT No. 1

REVISIONS

NO.	BY:	DATE:	NO.	BY:	DATE:
1			3		
2			4		

SHEET NO.

S-10
TOTAL SHEETS
16

DRAWN BY: R. G. EMERSON DATE: 10/03
CHECKED BY: P. C. BREWER DATE: 10/03