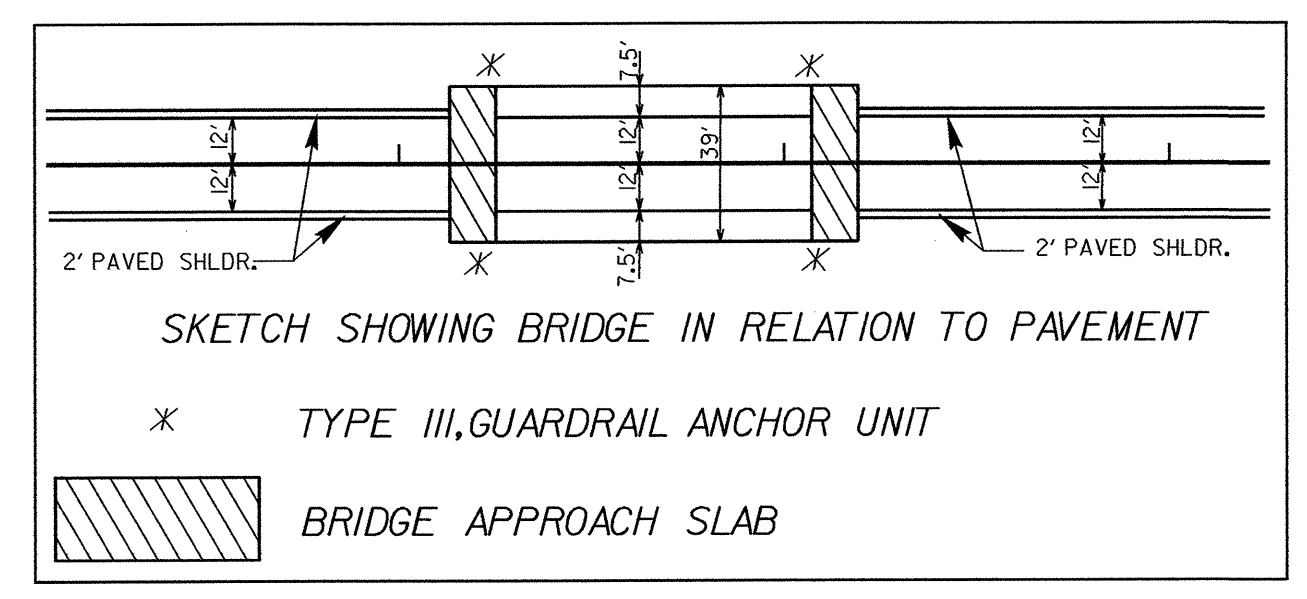


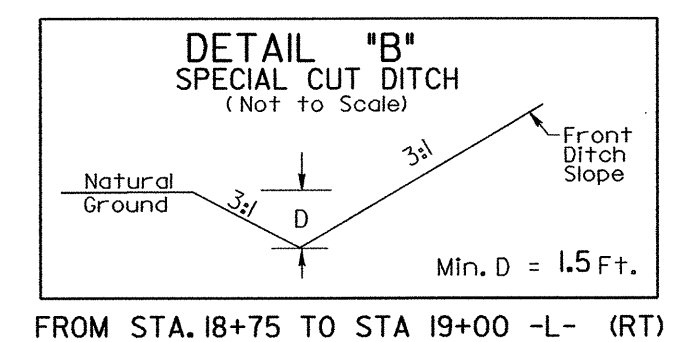
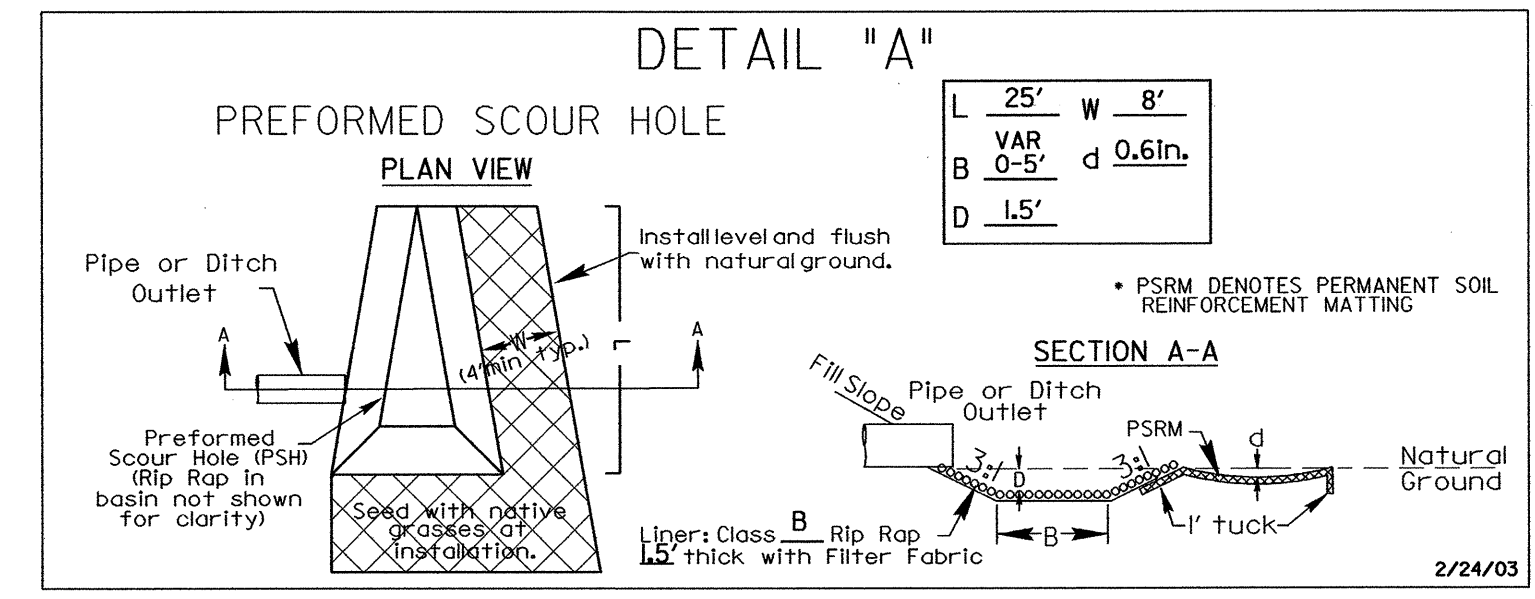
30-JAN-2004 14:47 d:\enr\br-1001\br-3871\proj\br-3871\rdy_psh4.dgn

PROJECT REFERENCE NO.	SHEET NO.
B-3871	EC-4/CONST.4
RW SHEET NO.	
ROADWAY DESIGN ENGINEER	HYDRAULICS ENGINEER

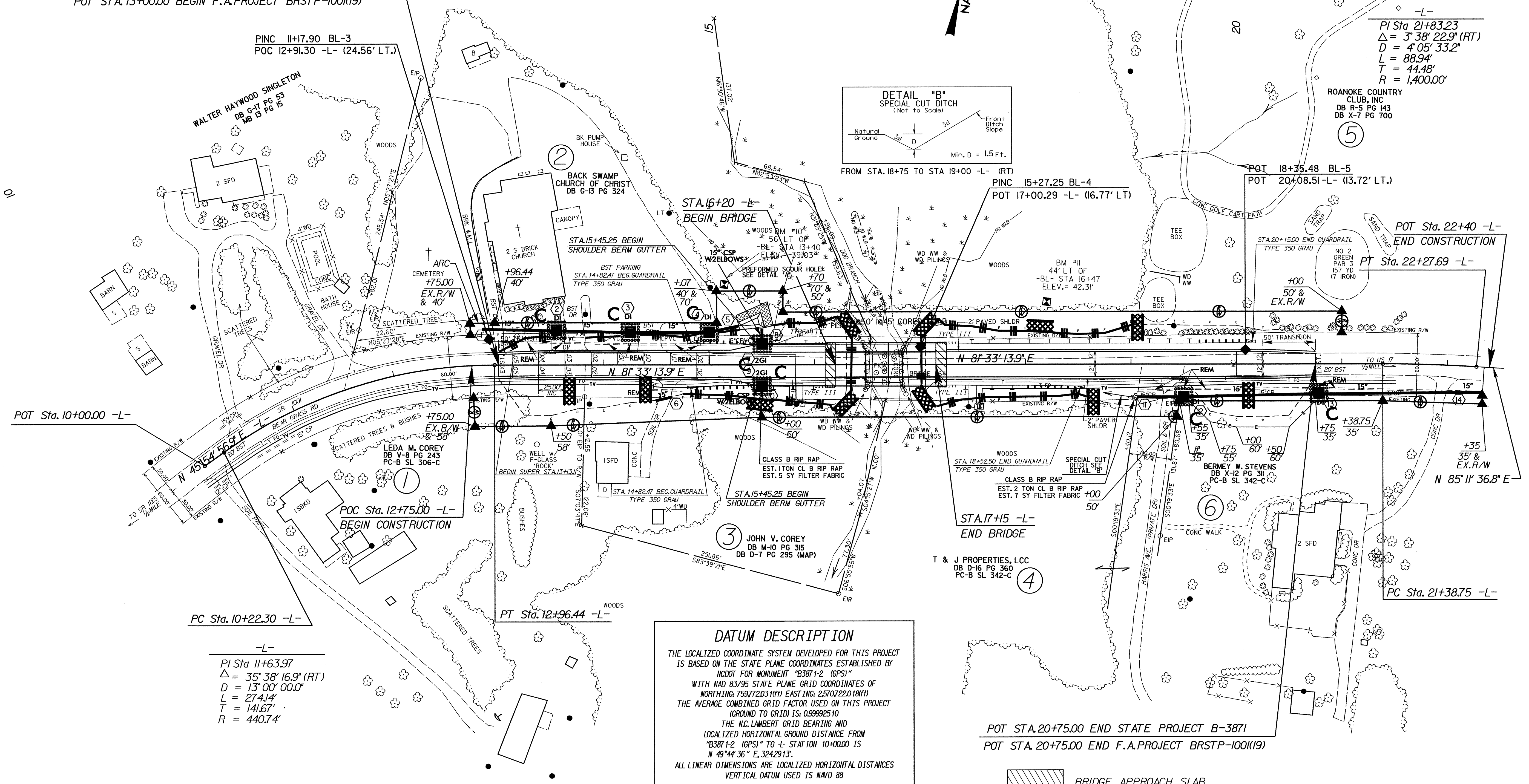


NOTE: UTILIZE TEMPORARY ROCK SILT CHECK TYPE- A AS STILLING BASIN WHERE APPLICABLE

NOTE: TEMPORARY SILT FENCE SHALL BE INSTALLED A MINIMUM OF 3 FEET FROM TOE OF FILL IN WETLAND AREAS



POT STA. 13+00.00 BEGIN STATE PROJECT B-3871
POT STA. 13+00.00 BEGIN F.A. PROJECT BRSTP-1001(I9)



PI Sta. 21+83.23
 $\Delta = 3^{\circ} 38' 22.9''$ (RT)
 $D = 4^{\circ} 05' 33.2''$
 $L = 88.94'$
 $T = 44.48'$
 $R = 1,400.00'$

-L-
PI Sta. 11+63.97
 $\Delta = 35^{\circ} 38' 16.9''$ (RT)
 $D = 13^{\circ} 00' 00.0''$
 $L = 274.14'$
 $T = 141.67'$
 $R = 440.74'$

DATUM DESCRIPTION

THE LOCALIZED COORDINATE SYSTEM DEVELOPED FOR THIS PROJECT IS BASED ON THE STATE PLANE COORDINATES ESTABLISHED BY NCDOT FOR MONUMENT "B3871-2 (GPS)" WITH NAD 83/95 STATE PLANE GRID COORDINATES OF NORTHING: 759772031(FH) EASTING: 2570722018(FH) THE AVERAGE COMBINED GRID FACTOR USED ON THIS PROJECT (GROUND TO GRID) IS: 0.99992510

THE N.C. LAMBERT GRID BEARING AND LOCALIZED HORIZONTAL GROUND DISTANCE FROM "B3871-2 (GPS)" TO -L- STATION 10+00.00 IS N 49°44' 36" E, 3242913'.

ALL LINEAR DIMENSIONS ARE LOCALIZED HORIZONTAL DISTANCES VERTICAL DATUM USED IS NAVD 88

POT STA. 20+75.00 END STATE PROJECT B-3871
POT STA. 20+75.00 END F.A. PROJECT BRSTP-1001(I9)