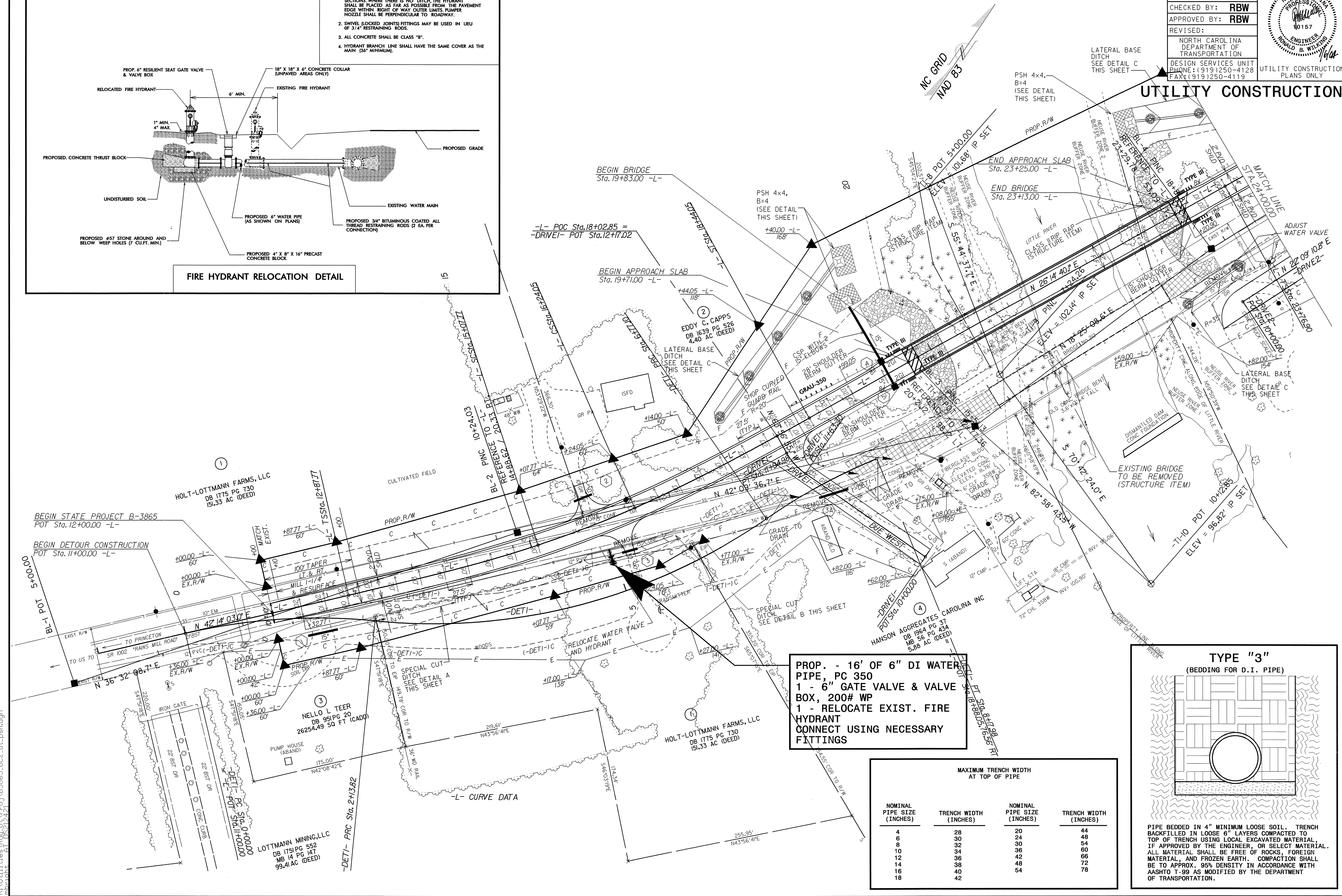
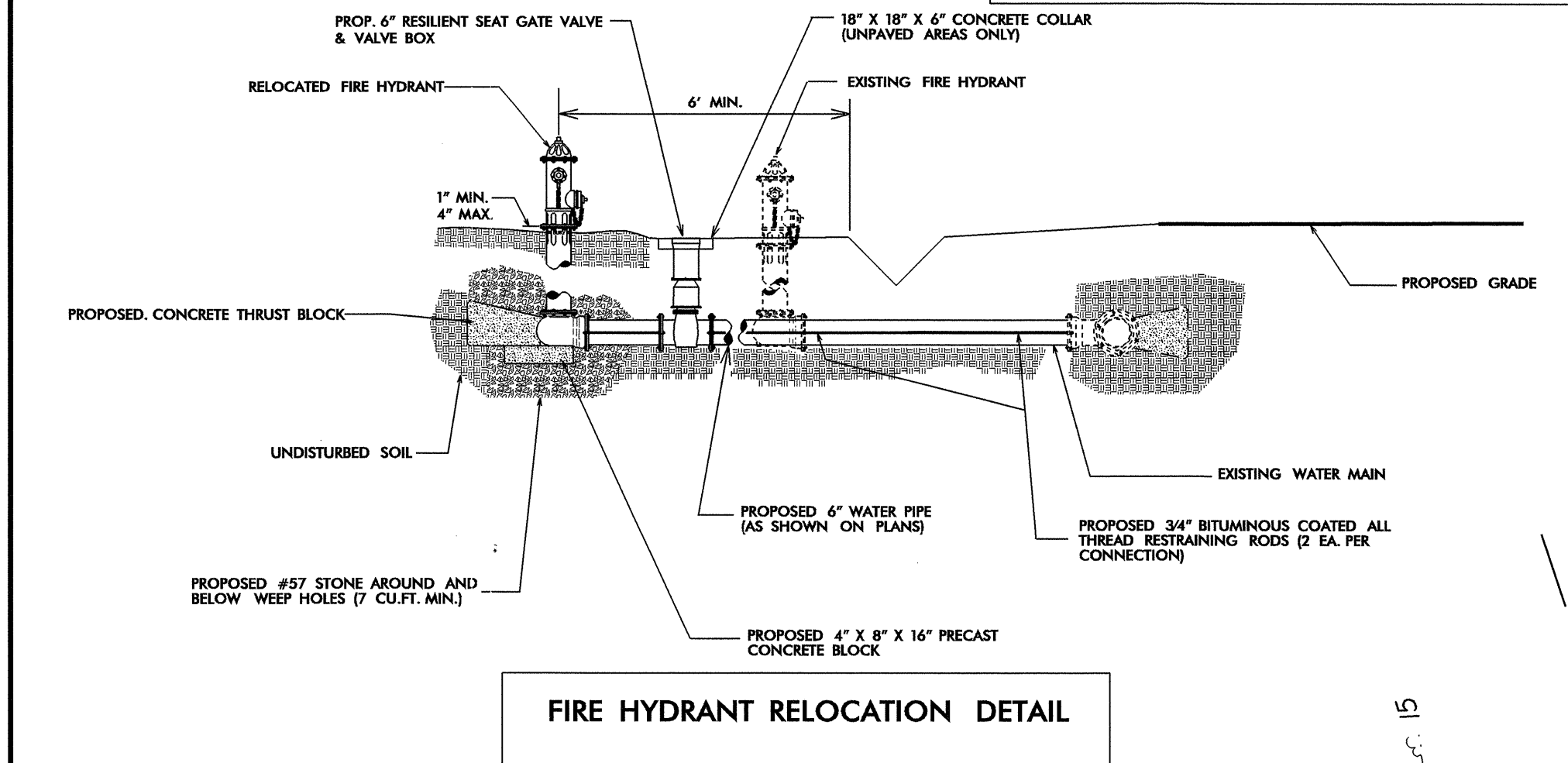
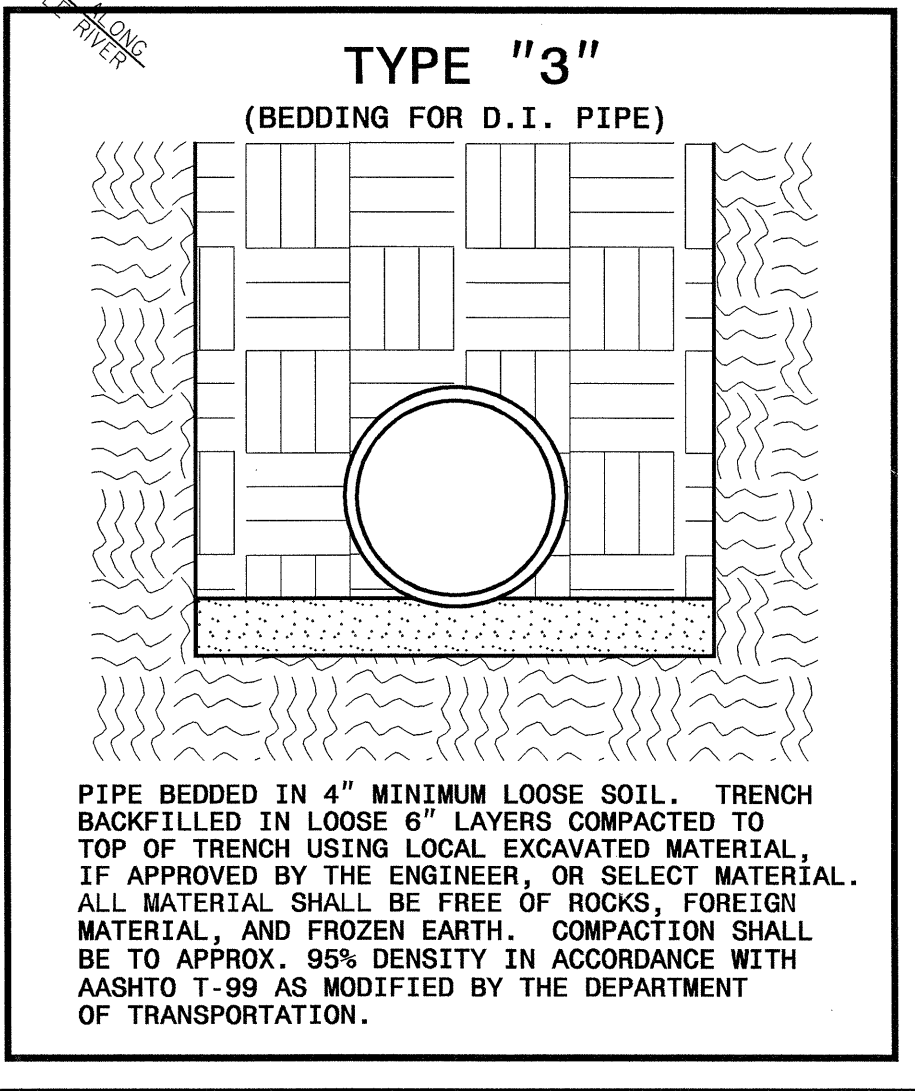


- GENERAL NOTES:**
- FIRE HYDRANTS SHALL BE PLACED A MINIMUM DISTANCE OF 6 FEET BACK OF CURB IN CURB AND GUTTER SECTIONS AND 6 FEET BACK OF DITCH IN ROADWAY SECTIONS WHERE THERE IS NO DITCH, THE HYDRANT SHALL BE PLACED AS FAR AS POSSIBLE FROM THE PAVEMENT EDGE WITHIN RIGHT OF WAY OUTER LIMITS. PLUMBER NOZZLE SHALL BE PERPENDICULAR TO ROADWAY.
 - SWIVEL (LOCKED JOINTS) FITTINGS MAY BE USED IN LIEU OF 3/4" RESTRAINING RODS.
 - ALL CONCRETE SHALL BE CLASS "B".
 - HYDRANT BRANCH LINE SHALL HAVE THE SAME COVER AS THE MAIN (36" MINIMUM).



PROP. - 16' OF 6" DI WATER PIPE, PC 350
1 - 6" GATE VALVE & VALVE BOX, 200# WP
1 - RELOCATE EXIST. FIRE HYDRANT
CONNECT USING NECESSARY FITTINGS



MAXIMUM TRENCH WIDTH AT TOP OF PIPE

NOMINAL PIPE SIZE (INCHES)	TRENCH WIDTH (INCHES)	NOMINAL PIPE SIZE (INCHES)	TRENCH WIDTH (INCHES)
4	28	20	44
6	30	24	48
8	32	30	54
10	34	36	60
12	36	42	66
14	38	48	72
16	40	54	78
18	42		

05-JAN-2004 12:09 R:\Utilities\Projects\B3865_UC2.ut_psh.dgn