

**KCI Associates**  
of North Carolina, P.A.  
RALEIGH OFFICE  
ENGINEERS • PLANNERS • ECOLOGISTS

SUITE 200, LANDMARK CENTER I  
4601 SIX FORKS RD.  
RALEIGH, N.C. 27609-5210  
(919) 783-9214

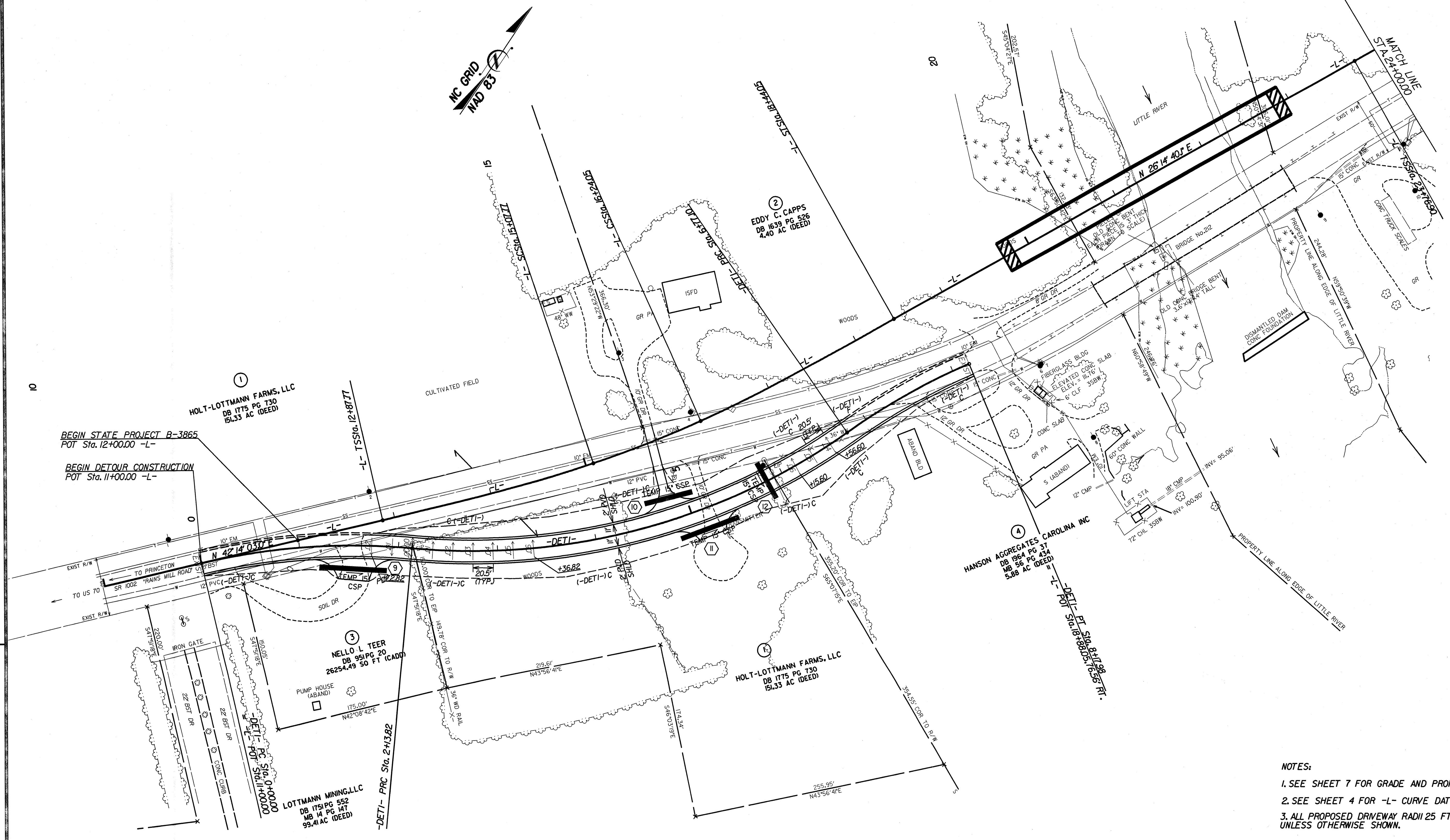
PROJECT REFERENCE NO. B-3865		SHEET NO. 2-B	
RW SHEET NO.			
ROADWAY DESIGN ENGINEER MICHELLE R. DRAKE 22781 1/23/14		HYDRAULICS ENGINEER JEFFREY L. RICK 026698 1/23/14	

# DETOUR I

**-DETI- CURVE DATA**

PI Sta 1+07.85 Δ = 18° 33' 42.2" (RT) D = 8' 40" 52.2" L = 213.82' T = 107.85' R = 660.00' RUNOFF = SEE PLANS SE = SEE PLANS V = 45 MPH	PI Sta 4+55.46 Δ = 40° 13' 06.0" (LT) D = 8' 40" 52.2" L = 463.28' T = 241.65' R = 660.00' RUNOFF = SEE PLANS SE = 0.06 V = 45 MPH	PI Sta 7+47.81 Δ = 12° 13' 49.5" (RT) D = 8' 40" 52.2" L = 140.88' T = 70.71' R = 660.00' RUNOFF = SEE PLANS SE = SEE PLANS V = 45 MPH
---	--	--

REVISIONS



- NOTES:**
1. SEE SHEET 7 FOR GRADE AND PROFILE.
  2. SEE SHEET 4 FOR -L- CURVE DATA.
  3. ALL PROPOSED DRIVEWAY RADII 25 FT UNLESS OTHERWISE SHOWN.