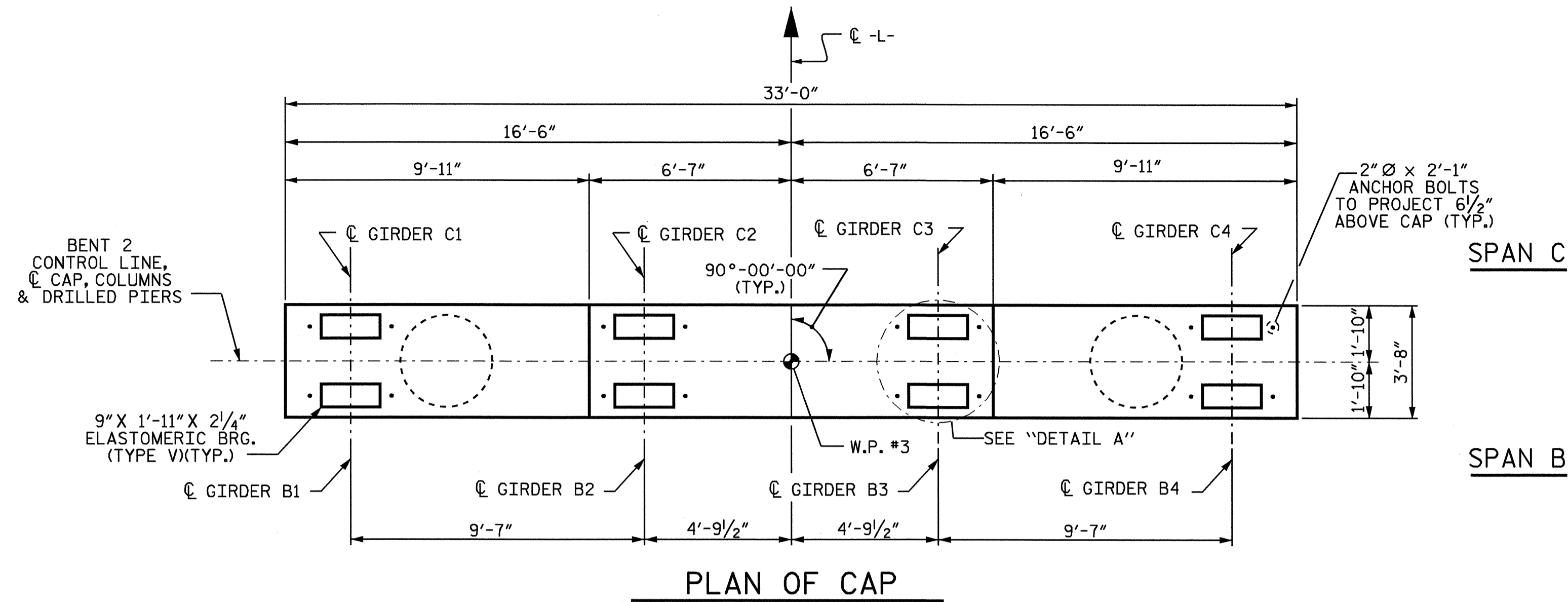


-- NOTES --

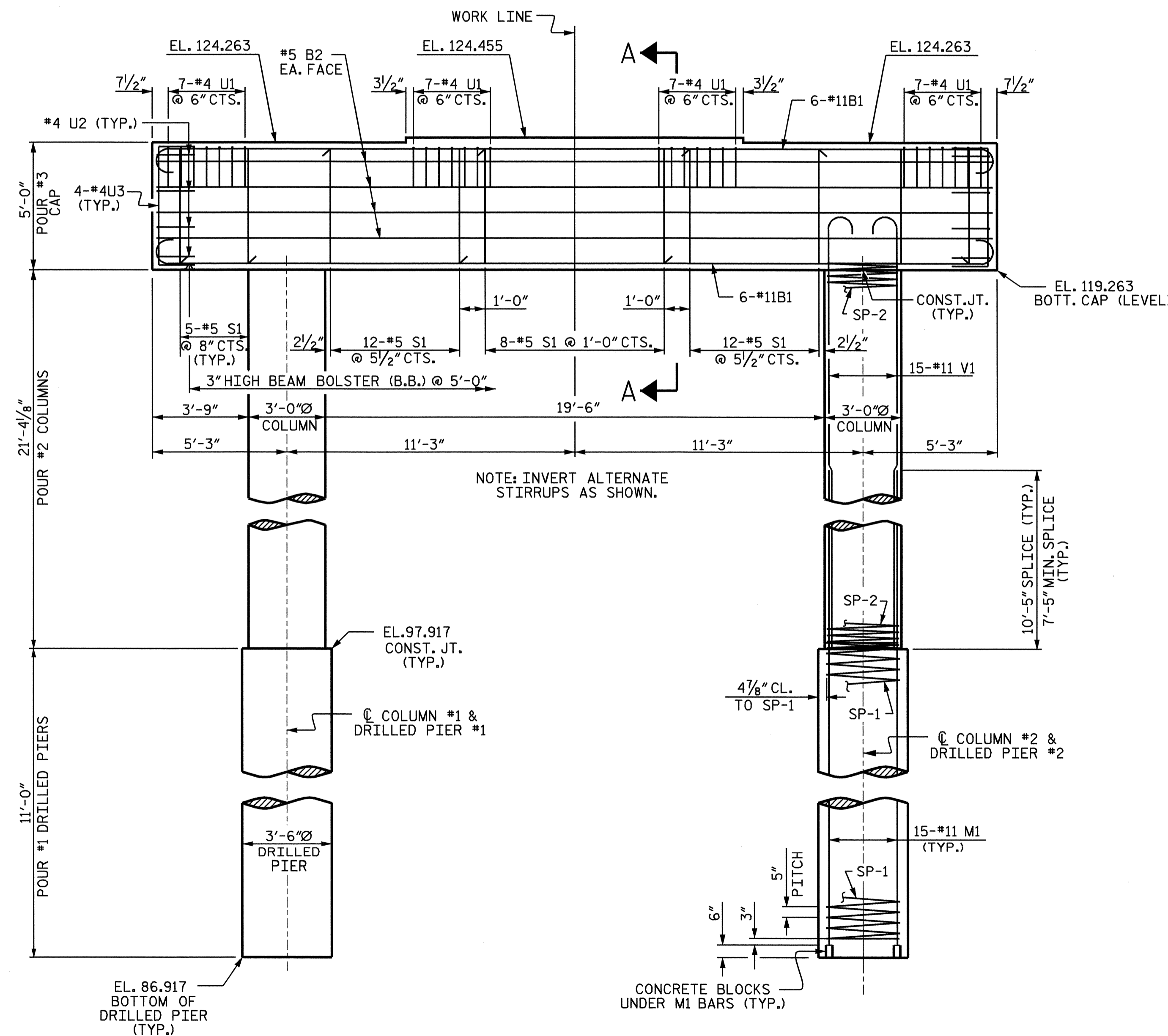
STIRRUPS IN CAP MAY BE SHIFTED AS NECESSARY TO CLEAR ANCHOR BOLTS.
 HOOKS ON "V" BARS MAY BE TURNED AS NECESSARY FOR PLACING REINFORCING STEEL.
 ALL STEEL IN THE DRILLED PIERS IS INCLUDED IN THE PAY ITEMS FOR "REINFORCING STEEL" AND "SPIRAL COLUMN REINFORCING STEEL".
 THE CONTRACTORS ATTENTION IS CALLED TO THE FACT THAT THE LONGITUDINAL REINFORCEMENT FOR THE DRILLED PIERS IS DETAILED WITH 3 FEET OF EXTRA LENGTH.
 FOR DRILLED PIERS, SEE SPECIAL PROVISIONS.
 FOR PERMANENT STEEL CASING, SEE SPECIAL PROVISION FOR DRILLED PIERS.
 THE LOCATION OF THE CONSTRUCTION JOINT IN THE DRILLED PIER IS BASED ON AN APPROXIMATE GROUND LINE ELEVATION. IF THE CONSTRUCTION JOINT IS ABOVE THE ACTUAL GROUND LINE ELEVATION, THE CONTRACTOR SHALL PLACE THE CONSTRUCTION JOINT 1 FOOT BELOW THE GROUND LINE.



SPAN C

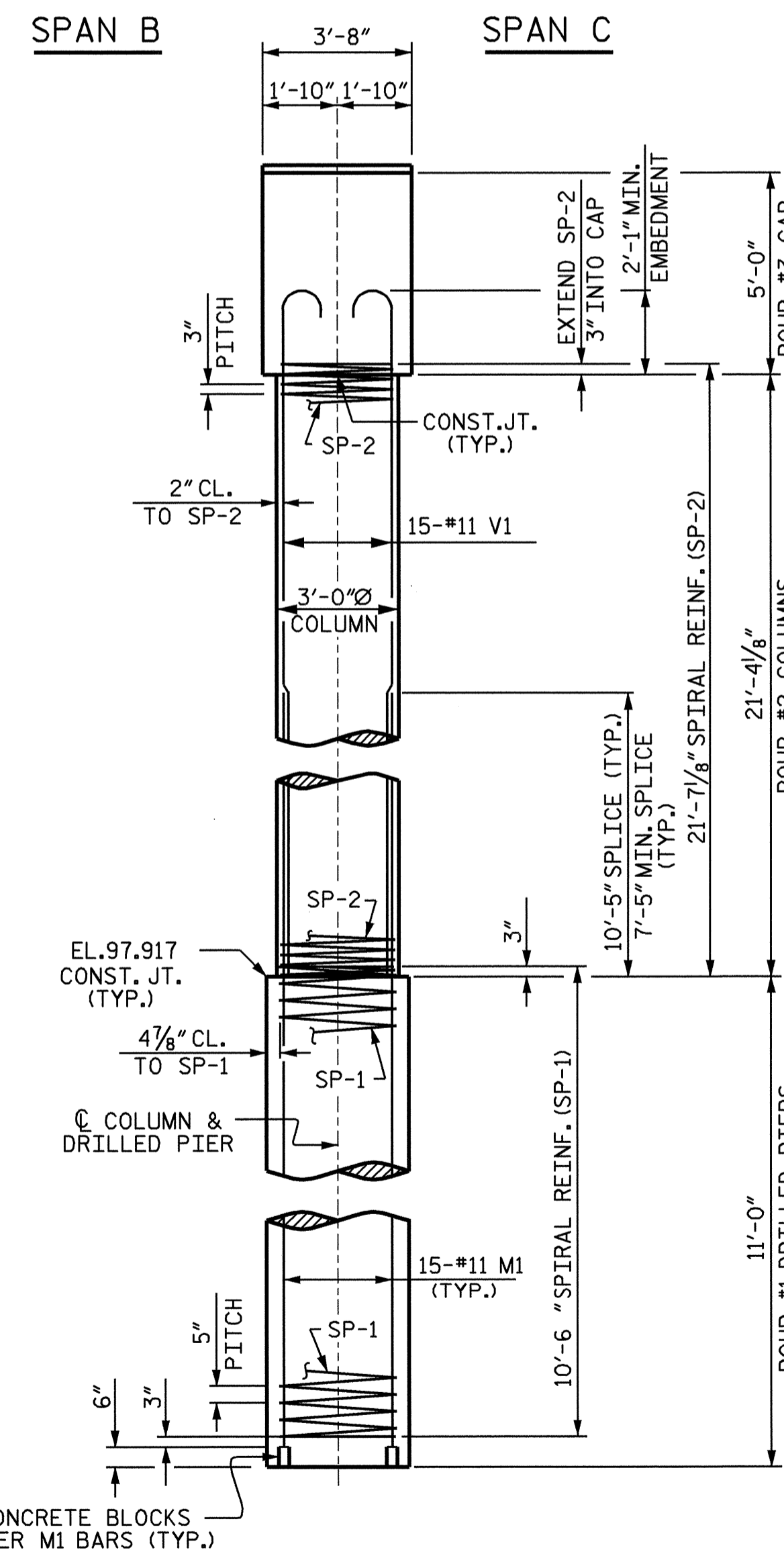
SPAN B

PLAN OF CAP

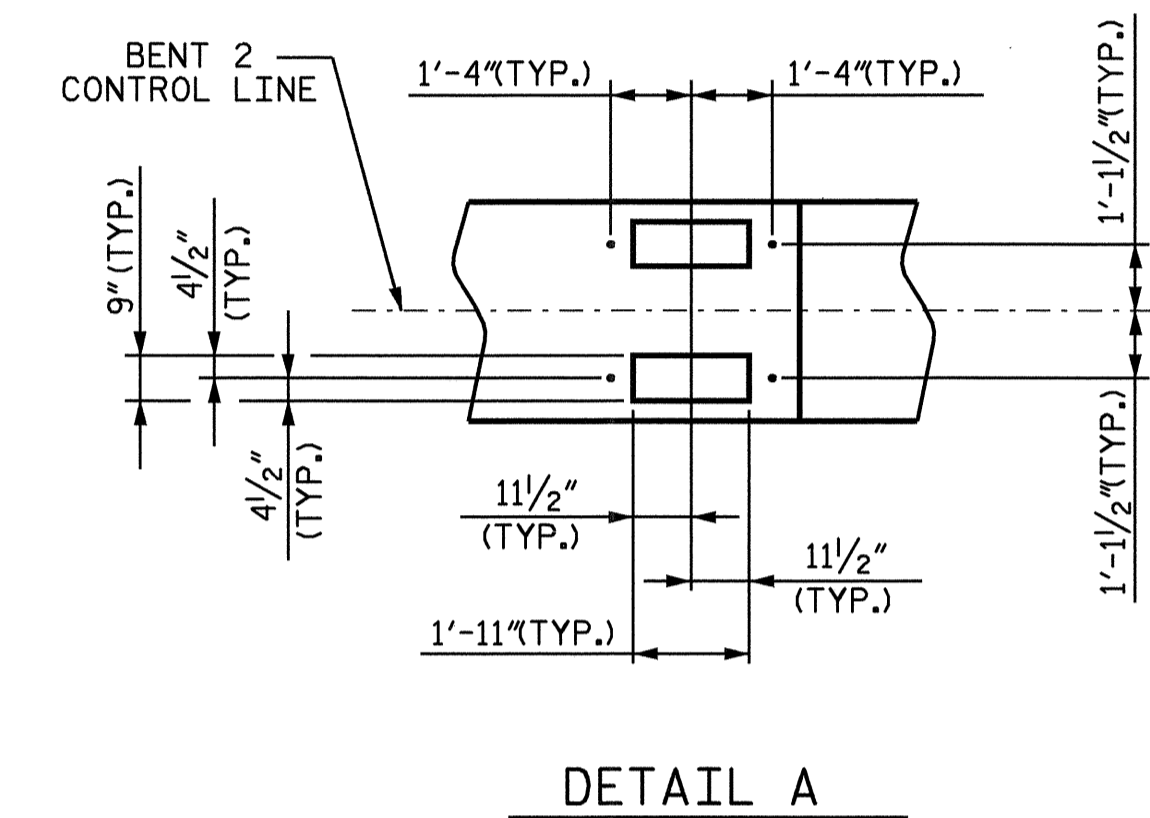


ELEVATION

ALL COLUMNS AND DRILLED PIERS ARE IDENTICAL



RIGHT END ELEVATION



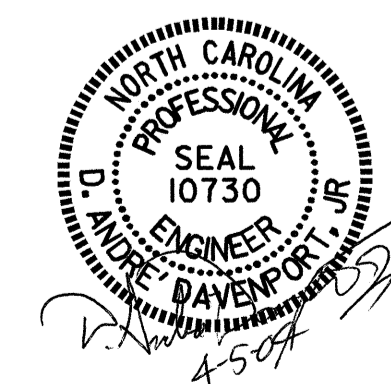
DETAIL A

PROJECT NO. B-3865
JOHNSTON COUNTY
 STATION: 21+48.00-L-

SHEET 1 OF 2

STATE OF NORTH CAROLINA
 DEPARTMENT OF TRANSPORTATION
 RALEIGH

**SUBSTRUCTURE
 BENT #2**



REVISIONS				SHEET NO.	
NO.	BY:	DATE:	NO.	BY:	DATE:
1			3		
2			4		
					TOTAL SHEETS
					33

DRAWN BY: D.A.DAVENPORT DATE: 02-18-04
 CHECKED BY: G.M.PATTERSON DATE: 02-24-04

05-APR-2004 08:52
 W:\squad\j\3865\adavenport\Microstation\b3865_SD_B1*.01.dgn
 adavenport

NC006