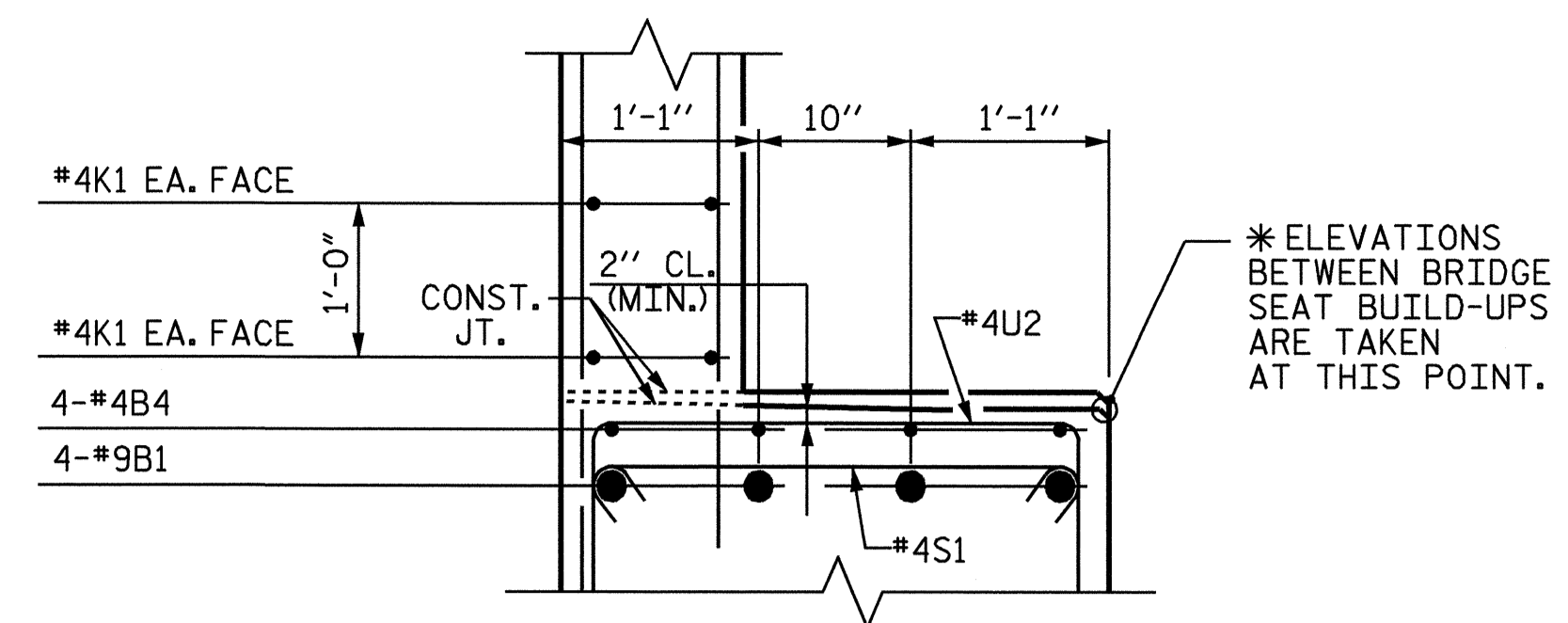
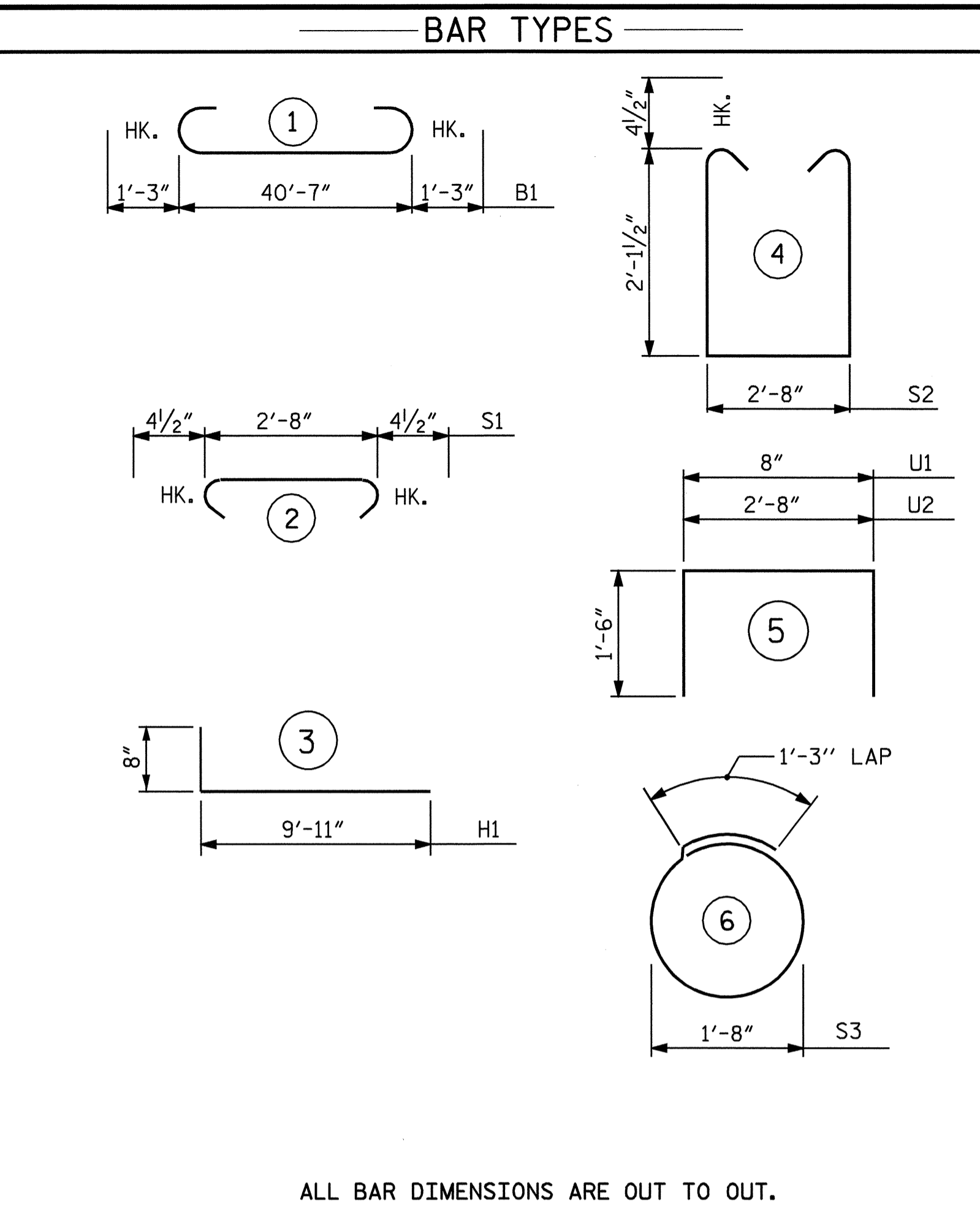


SECTION A-A

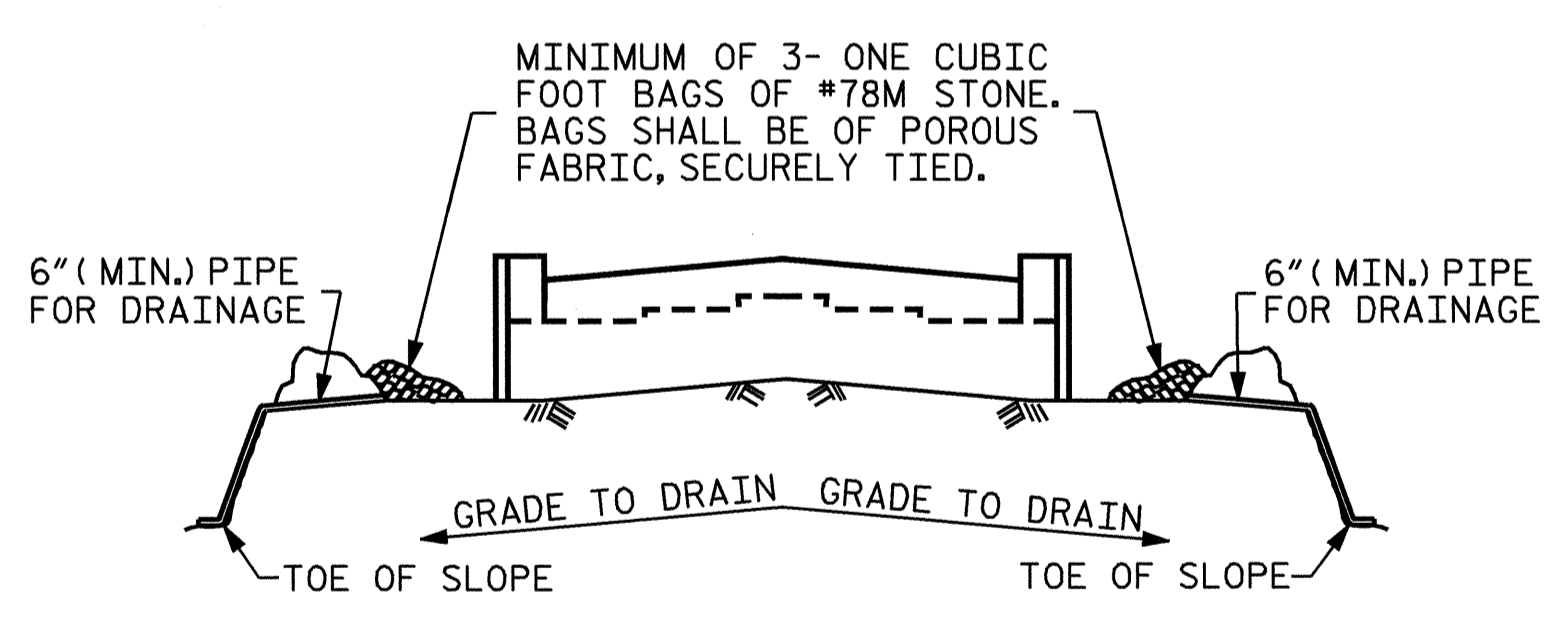


SECTION B-B



ALL BAR DIMENSIONS ARE OUT TO OUT.

BILL OF MATERIAL					
END BENT #2					
BAR NO.	NO.	SIZE	TYPE	LENGTH	WEIGHT
B1	8	#9	1	43'-1"	1172
B2	2	#5	STR	40'-9"	85
B3	8	#4	STR	21'-7"	115
B4	8	#4	STR	3'-3"	17
B5	11	#4	STR	2'-8"	20
H1	40	#5	3	10'-7"	442
K1	20	#4	STR	21'-7"	288
K2	8	#4	STR	2'-6"	13
S1	65	#4	2	3'-5"	148
S2	65	#4	4	7'-8"	333
S3	20	#4	6	6'-6"	87
U1	36	#4	5	3'-8"	88
U2	6	#4	5	5'-8"	23
V1	72	#5	STR	6'-9"	507
V2	52	#5	STR	8'-0"	434
REINFORCING STEEL					= 3772 LBS
CLASS A CONCRETE					
POUR #1					13.6 CU. YDS.
POUR #2					11.4 CU. YDS.
TOTAL					25.0 CU. YDS.
HP 12 x 53 STEEL PILES					
NO. 10					225 FEET



MINIMUM OF 3- ONE CUBIC FOOT BAGS OF #78M STONE. BAGS SHALL BE OF POROUS FABRIC, SECURELY TIED.

6" (MIN.) PIPE FOR DRAINAGE

GRADE TO DRAIN

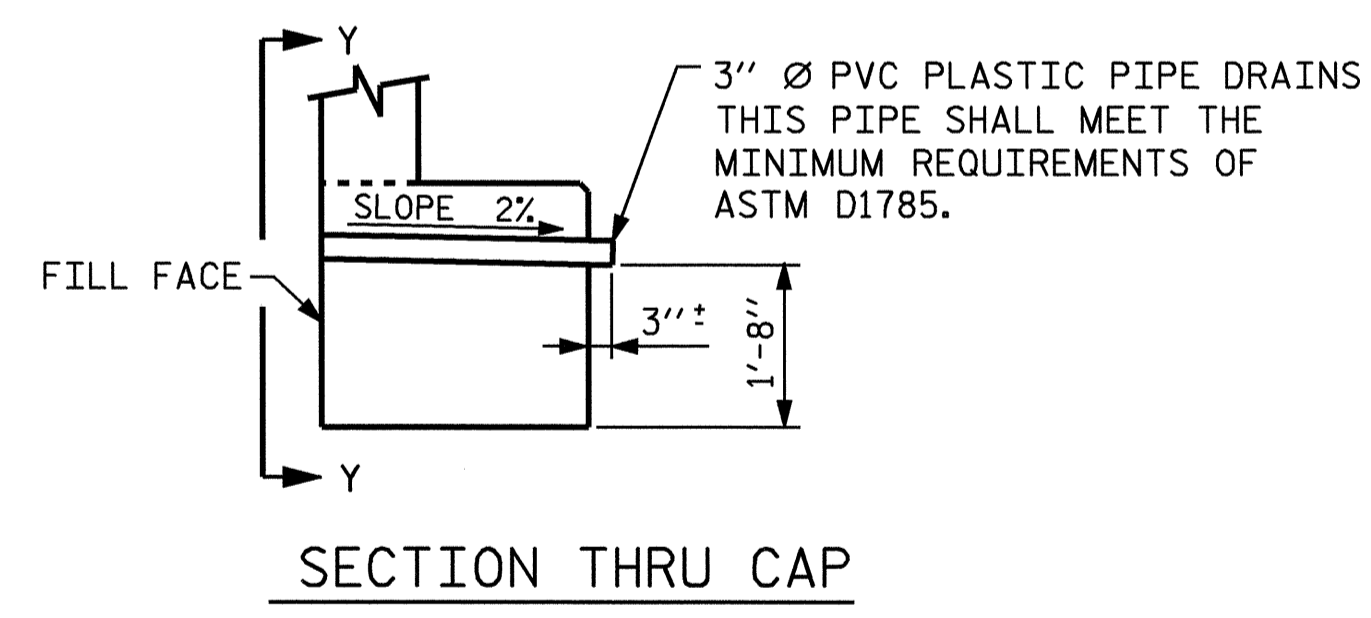
TOE OF SLOPE

BAGGED STONE AND PIPE SHALL BE PLACED IMMEDIATELY AFTER COMPLETION OF END BENT EXCAVATION. PIPE MAY BE EITHER CONCRETE, CORRUGATED STEEL, CORRUGATED ALUMINUM ALLOY, OR CORRUGATED PLASTIC. PERFORATED PIPE WILL NOT BE ALLOWED.

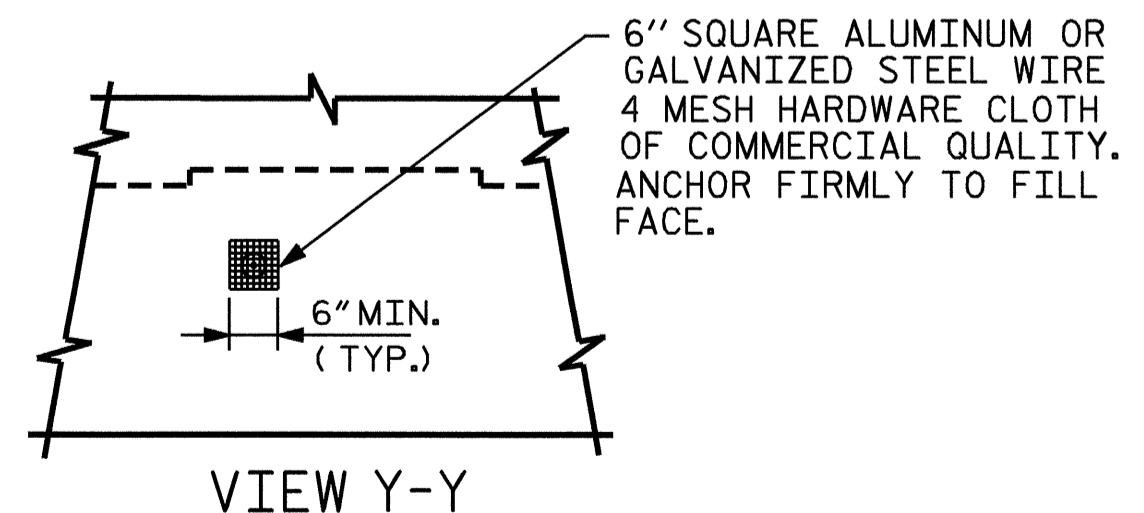
BAGGED STONE SHALL REMAIN IN PLACE UNTIL THE ENGINEER DIRECTS THAT IT BE REMOVED. THE CONTRACTOR SHALL REMOVE AND DISPOSE OF SILT ACCUMULATIONS AT BAGGED STONE WHEN SO DIRECTED BY THE ENGINEER. BAGS SHALL BE REMOVED AND REPLACED WHENEVER THE ENGINEER DETERMINES THAT THEY HAVE DETERIORATED AND LOST THEIR EFFECTIVENESS.

NO SEPARATE PAYMENT WILL BE MADE FOR THIS WORK AND THE ENTIRE COST OF THIS WORK SHALL BE INCLUDED IN THE UNIT CONTRACT PRICE BID FOR THE SEVERAL PAY ITEMS.

**TEMPORARY DRAINAGE AT END BENT**



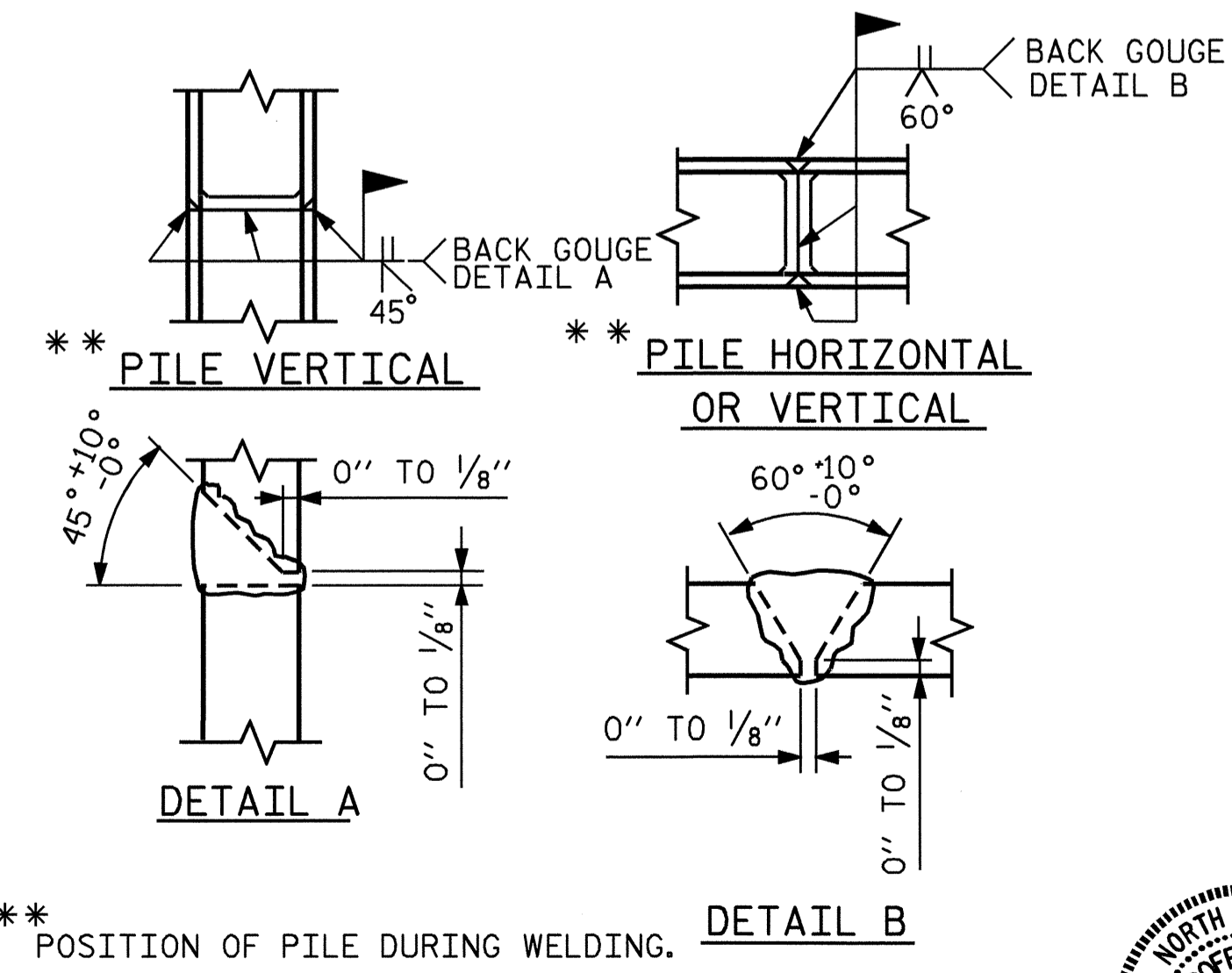
SECTION THRU CAP



VIEW Y-Y

NOTE: NO SEPARATE PAYMENT WILL BE MADE FOR FURNISHING AND INSTALLING THE PVC PLASTIC PIPE DRAINS, HARDWARE CLOTH AND FASTENERS. THE ENTIRE COST OF THIS WORK SHALL BE INCLUDED IN THE UNIT CONTRACT PRICE FOR THE SEVERAL PAY ITEMS.

**PIPE DRAIN DETAILS**



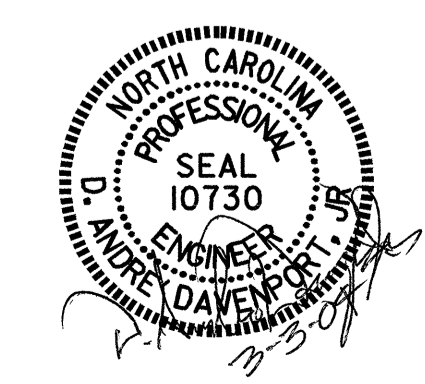
**PILE SPLICE DETAILS**

PROJECT NO. B-3865  
JOHNSTON COUNTY  
STATION: 28+48.00 -L-

SHEET 3 OF 3

STATE OF NORTH CAROLINA  
DEPARTMENT OF TRANSPORTATION  
RALEIGH

SUBSTRUCTURE  
END BENT #2



DRAWN BY: H. T. BARBOUR DATE: 2-04-04  
CHECKED BY: D. A. DAVENPORT DATE: 2-04

REVISIONS				SHEET NO.	
NO.	BY:	DATE:	NO.	BY:	DATE:
1			3		
2			4		

TOTAL SHEETS: 33