

BM 80
FROM -L- STA. 10+00.00
364.49' N49°19'27.1"W
EL. 154.45'
R/R SPIKE IN BASE
OF 18" PINE

BEGIN GRADE
-L- Sta. 13+00.00
EL = 155.009

BRIDGE HYDRAULIC DATA
DESIGN DISCHARGE = 3100 CFS
DESIGN FREQUENCY = 25 YRS
DESIGN HW ELEVATION = 154.9 FT
BASE DISCHARGE = 5650 CFS
BASE FREQUENCY = 100 YRS
BASE HW ELEVATION = 156.1 FT
OVERTOPPING DISCHARGE = 3100 CFS
OVERTOPPING FREQUENCY = 25+/- YRS
OVERTOPPING ELEVATION = 153.8 FT
DATE OF SURVEY = 11/21/02
W.S. ELEVATION AT DATE OF SURVEY = 149.60 FT

-L-

BM 81
-L- STA. 25+28.45
26.82' RT
EL. 169.15
R/R SPIKE IN BASE
OF 24" HARDWOOD

END GRADE
-L- Sta. 24+20.00
EL = 165.550

PI = 13+90.00
EL = 155.010'
VC = 105'
K = 138
V_d = 60mph

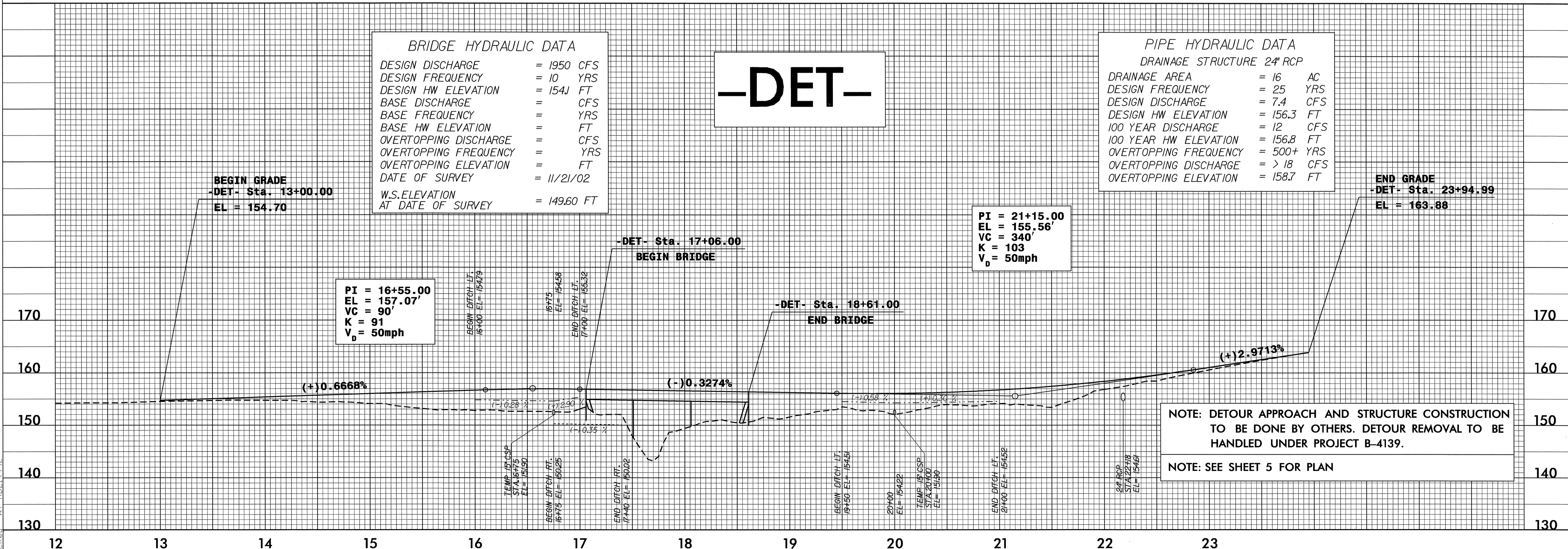
PI = 16+50.00
EL = 156.995'
VC = 70'
K = 151
V_d = 60mph

PI = 22+12.00
EL = 158.681'
VC = 410'
K = 137
V_d = 60mph

LEFT DITCH
RIGHT DITCH

NOTE: SEE SHEET 4 FOR PLAN

12 13 14 15 16 17 18 19 20 21 22 23 24 25 26



BRIDGE HYDRAULIC DATA
DESIGN DISCHARGE = 1950 CFS
DESIGN FREQUENCY = 10 YRS
DESIGN HW ELEVATION = 154.1 FT
BASE DISCHARGE = CFS
BASE FREQUENCY = YRS
BASE HW ELEVATION = FT
OVERTOPPING DISCHARGE = CFS
OVERTOPPING FREQUENCY = YRS
OVERTOPPING ELEVATION = FT
DATE OF SURVEY = 11/21/02
W.S. ELEVATION AT DATE OF SURVEY = 149.60 FT

-DET-

PIPE HYDRAULIC DATA
DRAINAGE STRUCTURE 24" RCP
DRAINAGE AREA = 16 AC
DESIGN FREQUENCY = 25 YRS
DESIGN DISCHARGE = 7.4 CFS
DESIGN HW ELEVATION = 156.3 FT
100 YEAR DISCHARGE = 12 CFS
100 YEAR HW ELEVATION = 156.8 FT
OVERTOPPING FREQUENCY = 500+ YRS
OVERTOPPING DISCHARGE = > 18 CFS
OVERTOPPING ELEVATION = 158.7 FT

BEGIN GRADE
-DET- Sta. 13+00.00
EL = 154.70

END GRADE
-DET- Sta. 23+94.99
EL = 163.88

PI = 16+55.00
EL = 157.07'
VC = 90'
K = 91
V_d = 50mph

PI = 21+15.00
EL = 155.56'
VC = 340'
K = 103
V_d = 50mph

NOTE: DETOUR APPROACH AND STRUCTURE CONSTRUCTION TO BE DONE BY OTHERS. DETOUR REMOVAL TO BE HANDLED UNDER PROJECT B-4139.
NOTE: SEE SHEET 5 FOR PLAN

12 13 14 15 16 17 18 19 20 21 22 23

27-FEB-2004 10:47
B:\p001\B4139\RD214492.dgn