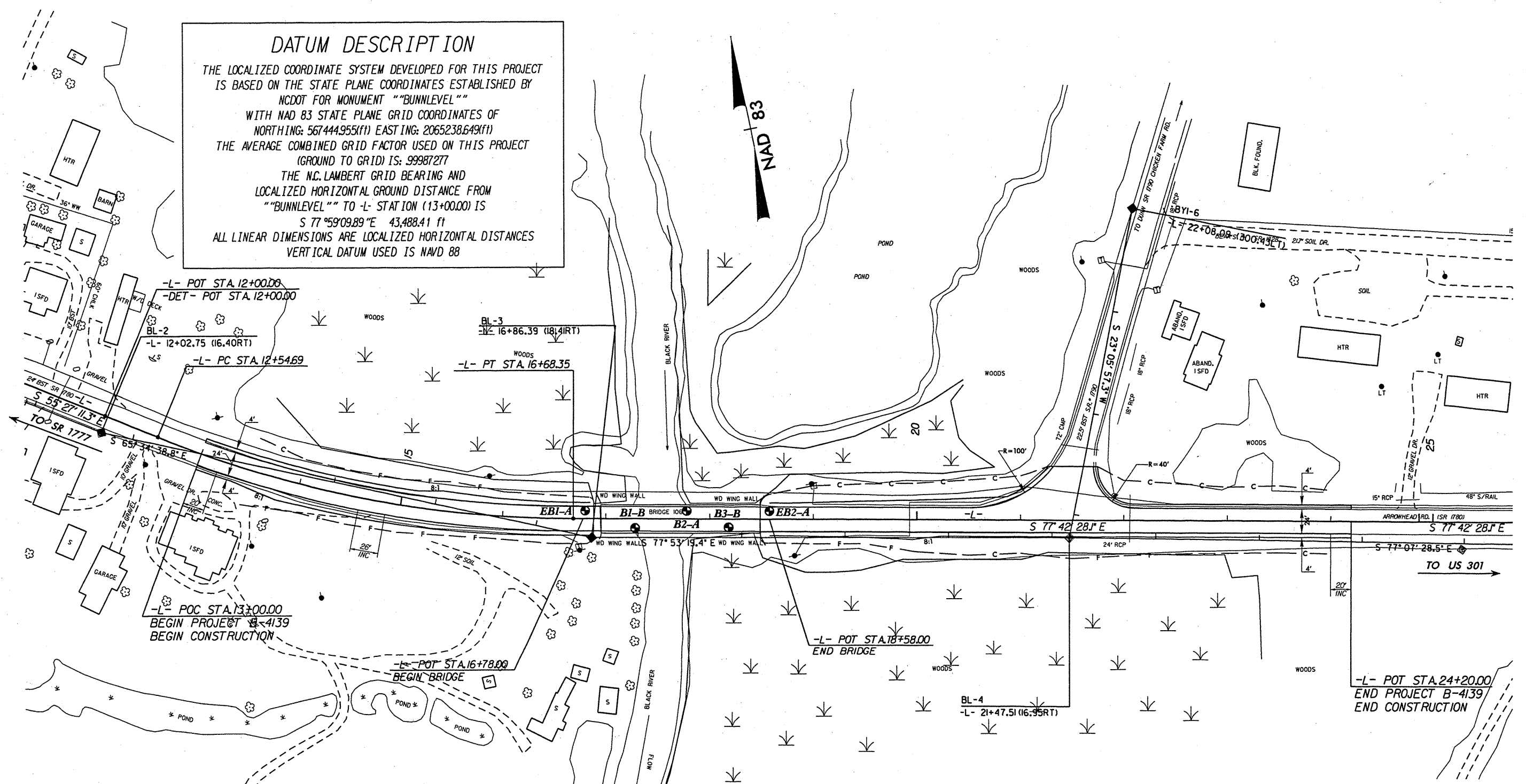


DATUM DESCRIPTION

THE LOCALIZED COORDINATE SYSTEM DEVELOPED FOR THIS PROJECT IS BASED ON THE STATE PLANE COORDINATES ESTABLISHED BY NCDOT FOR MONUMENT "BUNNLEVEL"
 WITH NAD 83 STATE PLANE GRID COORDINATES OF
 NORTHING: 567444.955(f1) EASTING: 2065238.649(f1)
 THE AVERAGE COMBINED GRID FACTOR USED ON THIS PROJECT (GROUND TO GRID) IS: 99987277
 THE N.C. LAMBERT GRID BEARING AND LOCALIZED HORIZONTAL GROUND DISTANCE FROM "BUNNLEVEL" TO -L- STATION (13+00.00) IS
 S 77°59'09.89" E 43,488.41 f1
 ALL LINEAR DIMENSIONS ARE LOCALIZED HORIZONTAL DISTANCES
 VERTICAL DATUM USED IS NAVD 88



-L- POT STA. 12+00.00
 -DET- POT STA. 12+00.00

BL-2
 -L- 12+02.75 (16.40RT)

-L- PC STA. 12+54.69

BL-3
 -L- 16+86.39 (18.41RT)

-L- PT STA. 16+68.35

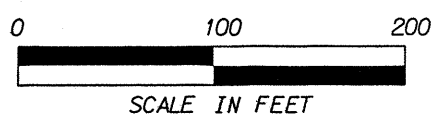
-L- POC STA. 13+00.00
 BEGIN PROJECT B-4139
 BEGIN CONSTRUCTION

-L- POT STA. 16+78.00
 BEGIN BRIDGE

-L- POT STA. 18+58.00
 END BRIDGE

-L- POT STA. 24+20.00
 END PROJECT B-4139
 END CONSTRUCTION

-L-
PI Sta 14+64.16
$\Delta = 22^\circ 15' 16.8" (LT)$
$D = 5^\circ 22' 47.6"$
$L = 413.66'$
$T = 209.47'$
$R = 1,065.00'$
$SE = 0.06$
$RO = 156'$
$V_d = 55\text{mph}$



BORING LOCATION PLAN

REPLACEMENT OF BRIDGE No. 106
 OVER BLACK RIVER ON SR 1780
 STATE PROJECT NO. 8.245 1201 TIP NO. B-4139
 FEDERAL I.D. NO. BRSTP-1780(1)
 HARNETT COUNTY, NORTH CAROLINA



SKREW ANGLE FOR BENTS: 90°00'00" (TYPICAL)
 BENCHMARK: NCDOT TRAVERSE STATION REBAR
 AND CAP STAMPED "BL-3" LOCATED
 18.41' RIGHT OF STATION 16+86.39 -L-.

SCALE:	1" = 100'	APPROVED BY:	AFR
DATE:	MAY 2003	DRAWN BY:	TRP
JOB NO.	105 1-03-074	SHEET	4 OF 14