

LOAD CASE 2 - LIGHT LOADING

PROJECT REFERENCE NO. U-4010
SHEET NO. Sig. 25
dwg. MP4

FOUNDATION SELECTION TABLE

42" Diameter Drilled Pier Length (L) - Feet

CONCRETE VOLUME (cubic yards) = .356xL

Denotes Wing Wall Required SEE NOTE 37.

USE TYPE-1 WING WALL. FOR DETAILS, SEE DRAWING NO. MP-11.

WIND ZONE 1	MAST ARM NUMBER	SOIL TYPES						
		Clay				Sand		
		Medium N-Value 4-8	Stiff N-Value 9-15	Very Stiff N-Value 16-30	Hard N-Value >30	Loose N-Value 4-10	Medium N-Value 11-30	Dense N-Value >30
LC2-25	13.5	10.0	9.0	9.0	13.0	11.5	10.0	
LC2-30	13.5	10.0	9.0	9.0	13.0	11.5	10.0	
LC2-45	14.5	10.5	9.0	9.0	14.0	12.0	11.0	

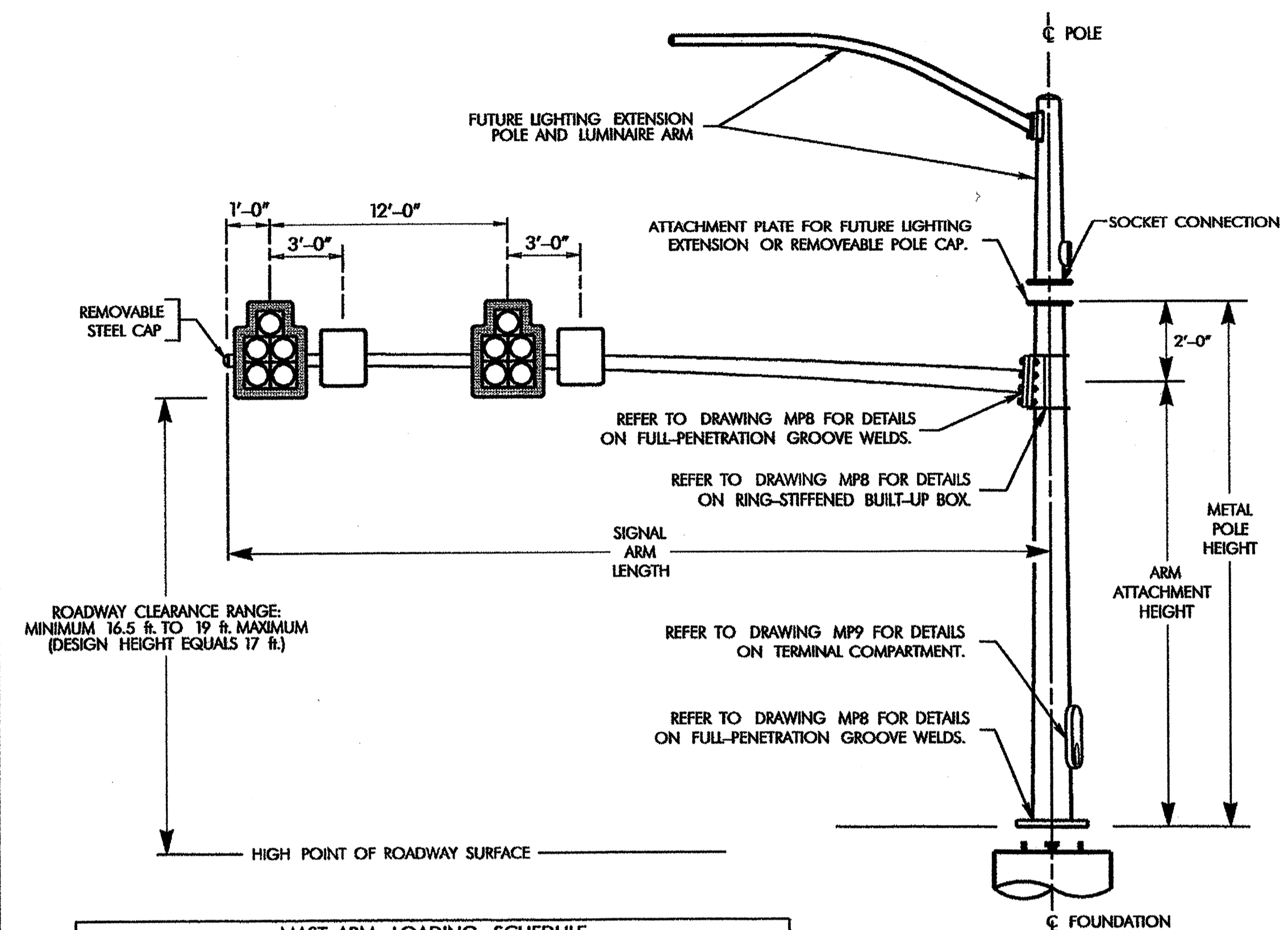
WIND ZONE 2	MAST ARM NUMBER	SOIL TYPES						
		Clay				Sand		
		Medium N-Value 4-8	Stiff N-Value 9-15	Very Stiff N-Value 16-30	Hard N-Value >30	Loose N-Value 4-10	Medium N-Value 11-30	Dense N-Value >30
LC2-25	11.5	9.0	9.0	9.0	12.0	10.5	9.5	
LC2-30	11.5	9.0	9.0	9.0	12.0	10.5	9.5	
LC2-45	13.5	10.0	9.0	9.0	13.0	11.5	10.0	

WIND ZONE 3	MAST ARM NUMBER	SOIL TYPES						
		Clay				Sand		
		Medium N-Value 4-8	Stiff N-Value 9-15	Very Stiff N-Value 16-30	Hard N-Value >30	Loose N-Value 4-10	Medium N-Value 11-30	Dense N-Value >30
LC2-25	11.5	9.0	9.0	9.0	12.0	10.5	9.5	
LC2-30	11.5	9.0	9.0	9.0	12.0	10.5	9.5	
LC2-45	11.5	9.0	9.0	9.0	12.0	10.5	9.5	

WIND ZONE 4	MAST ARM NUMBER	SOIL TYPES						
		Clay				Sand		
		Medium N-Value 4-8	Stiff N-Value 9-15	Very Stiff N-Value 16-30	Hard N-Value >30	Loose N-Value 4-10	Medium N-Value 11-30	Dense N-Value >30
LC2-25	9.5	9.0	9.0	9.0	10.0	9.0	9.0	
LC2-30	9.5	9.0	9.0	9.0	10.0	9.0	9.0	
LC2-45	11.5	9.0	9.0	9.0	12.0	10.5	9.5	

WIND ZONE 5	MAST ARM NUMBER	SOIL TYPES						
		Clay				Sand		
		Medium N-Value 4-8	Stiff N-Value 9-15	Very Stiff N-Value 16-30	Hard N-Value >30	Loose N-Value 4-10	Medium N-Value 11-30	Dense N-Value >30
LC2-25	11.5	9.0	9.0	9.0	12.0	10.5	9.5	
LC2-30	11.5	9.0	9.0	9.0	12.0	10.5	9.5	
LC2-45	11.5	10.0	9.0	9.0	13.0	11.5	10.0	

POLE LOADING DETAILS



MAST ARM LOADING SCHEDULE				
LOADING SYMBOL	DESCRIPTION	AREA	SIZE	WEIGHT
	SIGNAL HEAD 12"-5 SECTION-WITH BACKPLATE AND ASTRO-BRAC	16.3 S.F.	42.0" W X 56.0" L	103 LBS
	SIGN RIGID MOUNTED WITH ASTRO-SIGN-BRAC	5.0 S.F.	24.0" W X 30.0" L	11 LBS

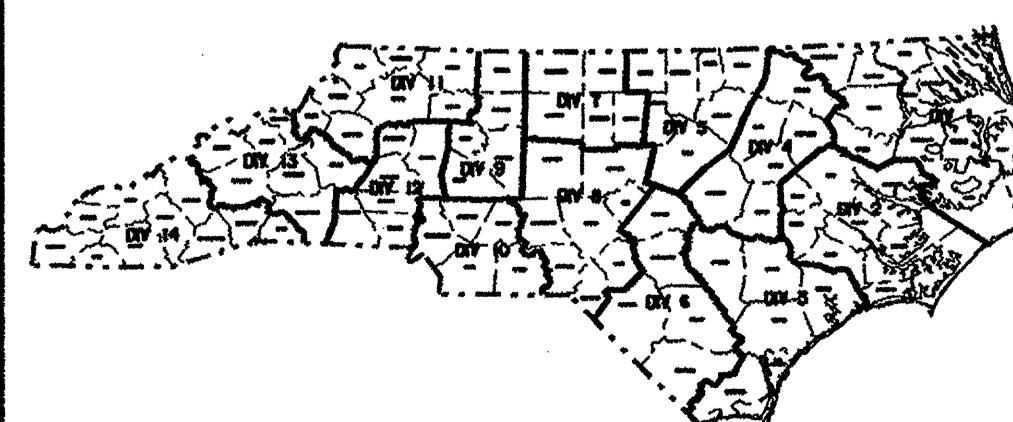
SIGNAL POLE WITH PROVISION FOR LIGHTING EXTENSION

MAST ARM NUMBER	SIGNAL ARM LENGTH	MINIMUM ARM BASE DIAMETER	MINIMUM ARM WALL THICKNESS	MAST ARM ATT. PLATE SIZE			ATT. PLATE TO FLANGE PLATE ATTACHMENT BOLT SIZE	MAST ARM ATT. PLATE THICKNESS	FLANGE PLATE THICKNESS	MIN. POLE DATA		
				W	H	A				B	POLE BASE DIAMETER	POLE WALL THICKNESS "T"
LC2-25	25'-0"	11"	.25"	24"	27"	15"	21"	1.5" x 7"	2"	2"	15"	.3125"
LC2-30	30'-0"	11"	.25"	24"	27"	15"	21"	1.5" x 7"	2"	2"	15"	.3125"
LC2-45	45'-0"	14"	.25"	24"	27"	18"	21"	1.5" x 7"	2"	2"	18"	.3125"

POLE BASE PLATE AND ANCHOR BOLT DATA				
SIGNAL POLE HEIGHT	MAX. BASE PLATE DIAMETER "D"	MAX. BASE PLATE BOLT CIRCLE "BC"	BASE PLATE THICKNESS	ANCHOR BOLT SIZE (8 PER POLE)
22'-0"	32"	25"	2"	2" x 66"
24'-0"	32"	25"	2"	2" x 66"
26'-0"	32"	25"	2"	2" x 66"

MAST ARM AND POLE IDENTIFICATION LEGEND	
MAST ARMS AND METAL POLES SELECTED FOR USE FROM THESE STANDARDS SHOULD BE IDENTIFIED USING THE FOLLOWING ALPHA NUMERIC IDENTIFICATION NUMBER:	
LCX-XX-XX	Pole Height
Load Case Number (1 THRU 5)	Mast Arm Length

REFER TO DRAWING MP8 AND MP9 FOR DETAILS ON POLE AND ARM FABRICATION.



Prepared in the Offices of

 122 N. McDowell St., Raleigh, NC 27603

POLE LOADING DETAILS AND FOUNDATION SELECTION TABLES FOR LOAD CASE 2

PLAN DATE: APRIL 2003	REVIEWED BY: D.C. SARKAR
PREPARED BY: C.F. ANDREWS	REVIEWED BY: R.E. MULLINAX
REVISIONS	INIT. DATE

SEAL

 D.C. SARKAR 6.3.03
 SIGNATURE DATE
 STG. INVENTORY NO.

METAL POLES WITH MAST ARMS