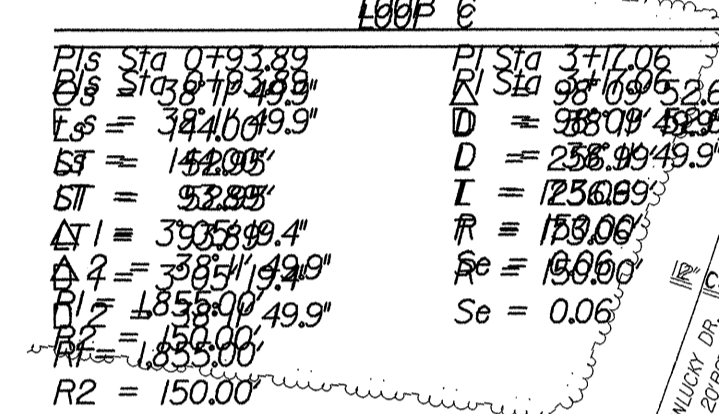
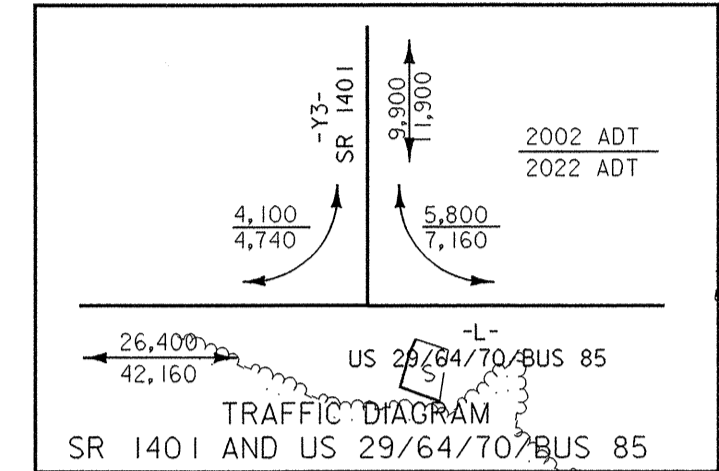


PROJECT REFERENCE NO.		SHEET NO.	
B-3157		UC-2	
DESIGNED BY: CSG			
DRAWN BY: CSG			
CHECKED BY: RBW			
APPROVED BY: RBW			
REVISION:			
NORTH CAROLINA DEPARTMENT OF TRANSPORTATION			
DESIGN SERVICES UNIT PHONE: (919) 250-4128 FAX: (919) 250-4119			
UTILITY CONSTRUCTION PLANS ONLY			



-L- POC 17+00.00
BEGIN STATE PROJECT B-3157

-L- SC 16+28.69

-L- POS 13+35.00
BEGIN CONSTRUCTION

Y6- POC 12+44.81
BEGIN CONSTRUCTION

Pls Sta 14+68.96
 $\theta = 71' 16'' 32.4'$
LS = 480.00
ST = 160.25
LT = 320.27

PI Sta 22+22.47
 $\theta = 34' 52'' 55.7'$ (RT)
D = 0'30'53.5"

Pls Sta 29+39.58
 $\theta = 71' 16'' 32.4'$
LS = 480.00
ST = 160.25
LT = 320.27

PI Sta 11+92.38
D = 815'04.0"

PI Sta 14+26.76
D = 0'24' 33.6' (RT)

PI Sta 24+55.50
D = 0'23' 06.6' (LT)

PI Sta 27+66.75
D = 8'05' 50.0' (RT)

Pls Sta 1+00.24
 $\theta = 123' 24'' 40.3'$
LS = 158.54
ST = 160.25
LT = 320.27

PI Sta 4+80.12
 $\theta = 93' 09'' 43.5'$ (RT)
D = 115'03.15' (RT)
Se = 0.06

Pls Sta 11+92.38
 $\theta = 31' 7'' 00.0'$
LS = 31.74
ST = 11.56
LT = 23.14

Pls Sta 14+26.76
 $\theta = 02' 45'' 33.6'$ (RT)
LS = 68.88
ST = 34.44
LT = 68.88

Pls Sta 24+55.50
D = 1'18' 00"

Pls Sta 27+66.75
D = 5'00' 00"

Pls Sta 0+93.88
 $\theta = 109' 41'' 49.9'$
LS = 144.00
ST = 160.25
LT = 320.27

PI Sta 3+10.06
 $\theta = 98' 09'' 52.6'$ (RT)
D = 388'09' 49.9' (RT)
LS = 350.73
ST = 160.25
LT = 320.27

Pls Sta 11+92.38
 $\theta = 18' 58'' 09.0'$
LS = 509.30
ST = 160.25
LT = 320.27

PI Sta 15+00.00
R2 = 150.00

LOOP C SC 1+44.00

LOOP C CS 0+00 (35.00 RT) =

-L- POC 17+16.28

LOOP C PT 4+00.99

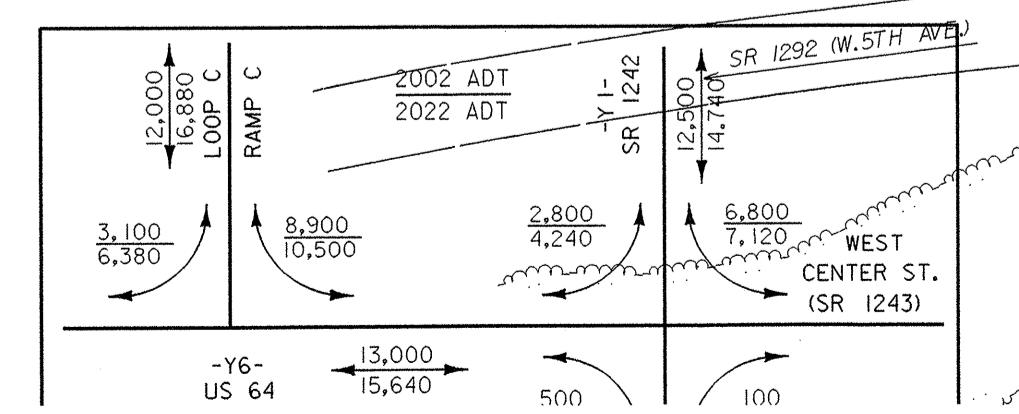
Y6- POC 18+80.00 =

LOOP C POT 4+85.64

RAMP C PT 7+28.03

Y6- POC 19+00.00 =

RAMP C POT 7+47.97



FOR ELEVATION SEE SHEETS 6 & 7
FOR PROFILE SEE SHEET 7
FOR SLOPE SEE SHEET 7
FOR RAMP CLEARANCES SEE SHEET 9
FOR DETAIL OF PROPOSED CHANNEL SEE SHEETS 2-0 THRU 2-0
FOR SPECIAL DETAILS OF STRUCTURE AND UNITS, SEE SHEET 2-L THRU 2-L
FOR SPECIAL DETAILS OF PROPOSED CHANNEL SEE SHEETS 2-L THRU 2-L
FOR SPECIAL DETAILS OF SPECIAL HEADWALL SEE SHEET 2-JJ
FOR SPECIAL DETAIL OF SPECIAL TR-20 SEE SHEET 2-11

UTILITY CONSTRUCTION

PROP. 231.15'-16" DI SEWER PIPE, PC 350

PROP. 40'-16" DI RESTRAINED JOINT SEWER PIPE, PC 350

PROP. MH "C1" (4' DIA) STA. 1+97.03 LINE 1 STA. 22+24.08 LINE -Y1-OFFSET=175.27' RT.

PROP. 1-BREAK-DOWN, PLUG AND FILL ABANDONED UTILITY MANHOLE

PROP. MH "A2" LINE 2 (4' DIA.) STA. 0+78.65 LINE 1 STA. 0+00.00 LINE 2 STA. 23+26.90 LINE -Y1-OFFSET=119.55' RT.

PROP. 2-BREAKDOWN & REBUILD EXISTING MANHOLE

EXIST. MH "A1" (4' DIA) STA. 0+00.00 LINE 1 STA. 23+97.11 LINE -Y1-OFFSET=146.26' RT.

PROP. 55.22'-8" DI SEWER PIPE, PC 350

PROP. 276' FILL FOR REMOVE ABANDONED 16" PIPE (DI SEWER)

MATCHLINE TO SHEET UC-3 STATION 27+00

MATCHLINE