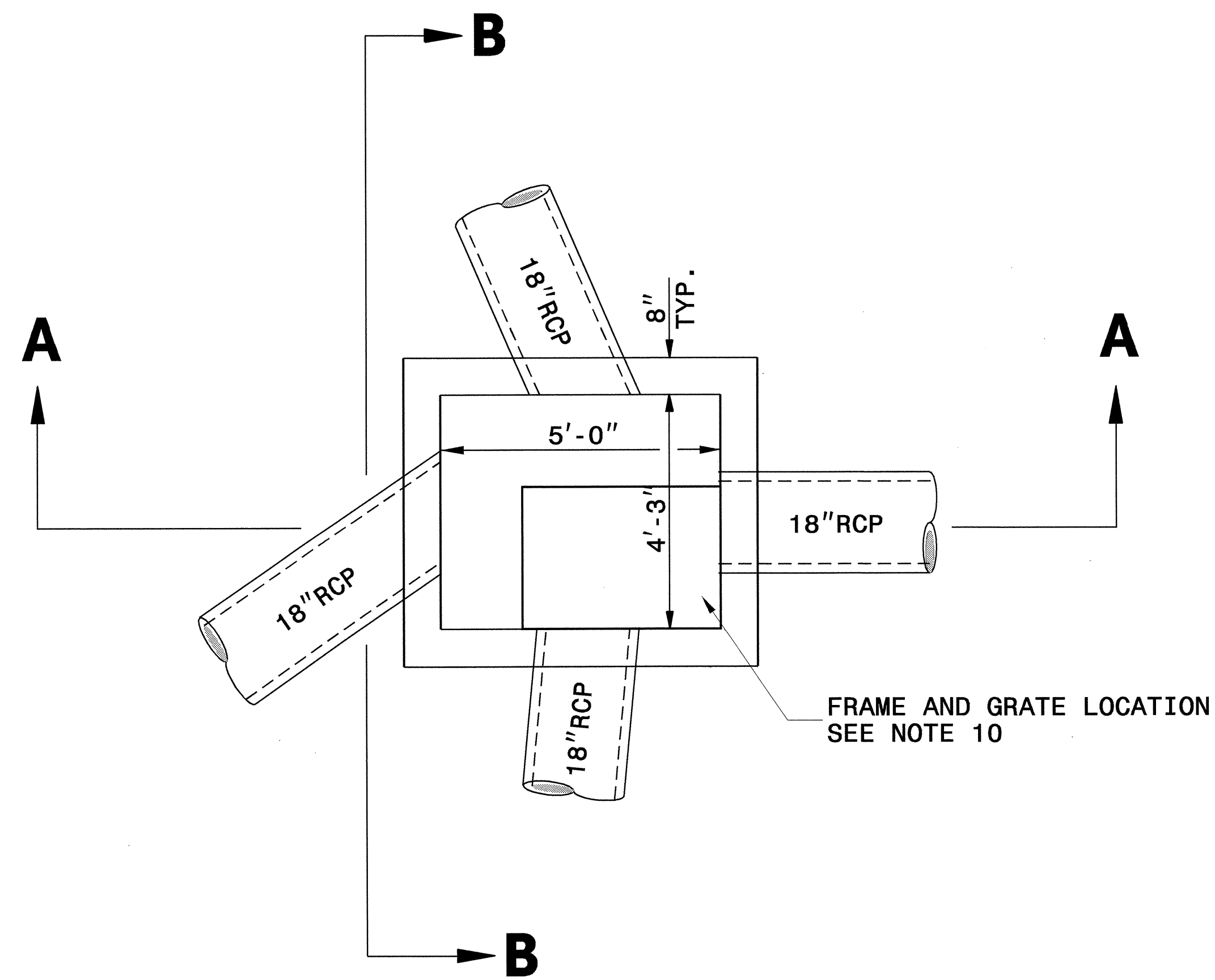
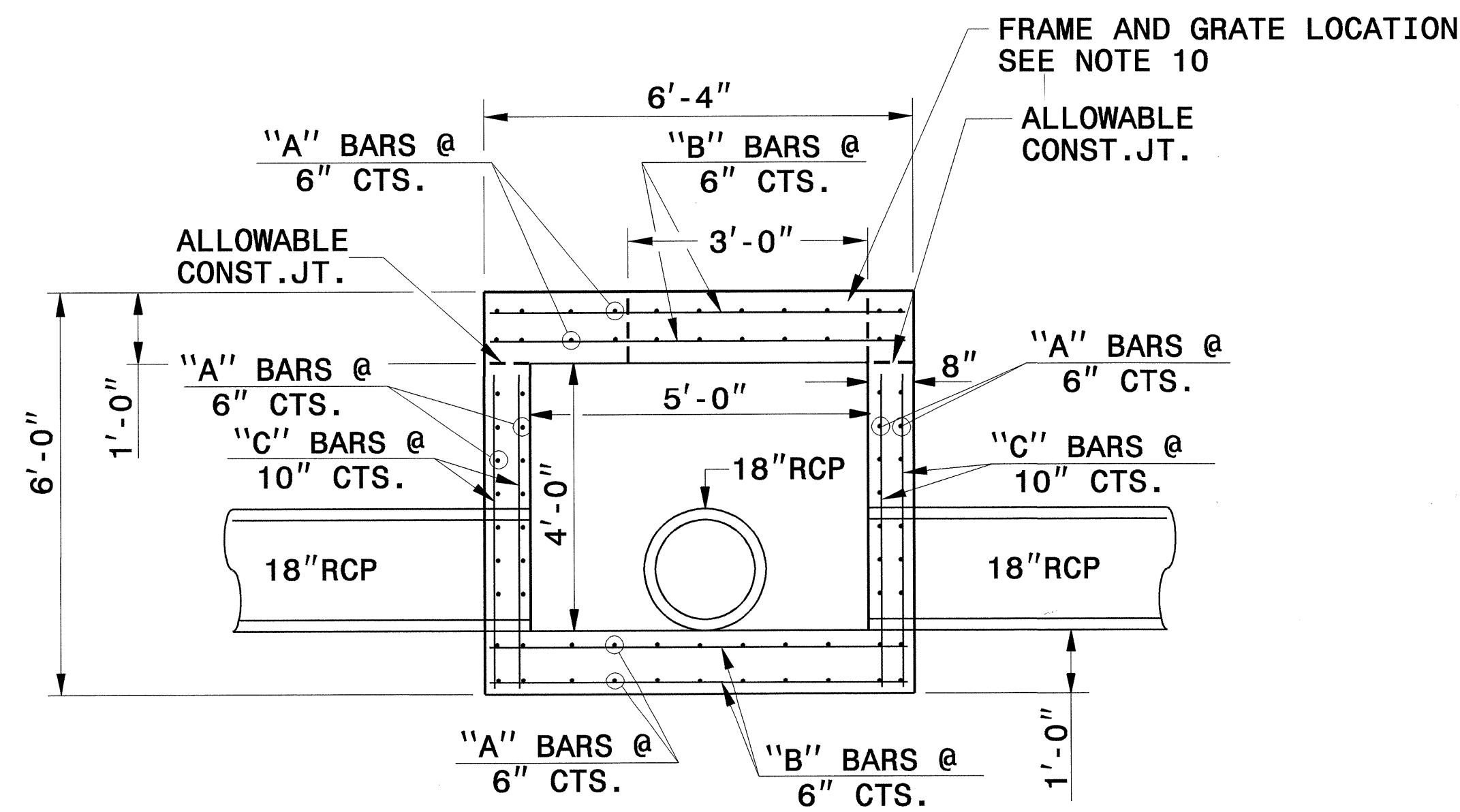


NOTES:

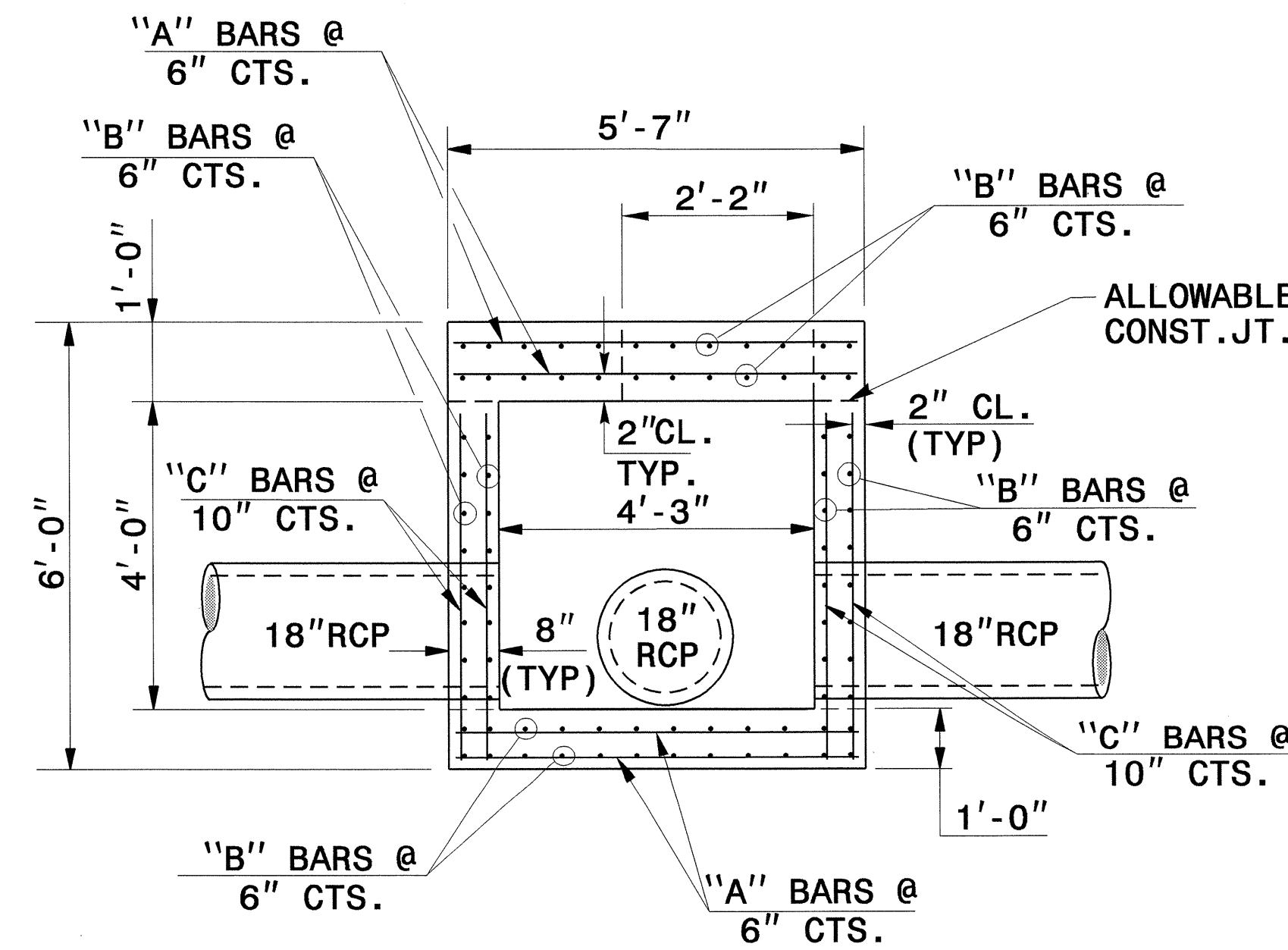
1. USE CLASS 'B' CONCRETE THROUGHOUT.
2. CONSTRUCT CONCRETE BOX IN ACCORDANCE WITH SECTION 825 OF THE STANDARD SPECIFICATIONS AND MAY BE ADJUSTED TO FIT PIPE CONDITION.
3. USE FORMS FOR CONSTRUCTION OF THE BOTTOM SLAB.
4. ADJUST LENGTH OF STEEL BARS AS NEEDED TO COMPENSATE FOR PIPES.
5. CONFORM REINFORCING STEEL TO ASTM A615, GRADE 400.
6. CUT OR BEND STEEL BARS AS NEEDED TO PROVIDE 50mm CLEARANCE AROUND PIPES OR AS DIRECTED BY THE ENGINEER.
7. ADJUST HEIGHT, WIDTH AND DEPTH DIMENSIONS OF CATCH BASIN IN THE FIELD AS DIRECTED BY THE ENGINEER.
8. SLAB AND WALL THICKNESS CAN NOT BE ADJUSTED.
9. FRAME AND GRATE LOCATED AS FIELD CONDITION DICTATES AND DIRECTED BY THE ENGINEER.
10. USE TEMPORARY STEEL COVER FOR TRAFFIC CONTROL AS DIRECTED BY THE ENGINEER.



PLAN



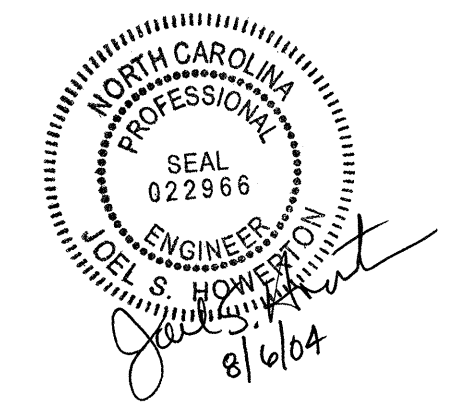
SECTION A-A



SECTION B-B

BILL OF MATERIALS				
BAR	NO.	SIZE	LENGTH	WEIGHT
A	76	#5	5'-5"	430
B	76	#5	6'-2"	489
C	76	#5	4'-10"	384
TOTAL REINF. STEEL (lbs)				1303
CONC. (cu. yds)				4.7
DEDUCTIONS FOR PIPES				
4-18" RCP @ 0.049				
cu yds ea.				-0.2
TOTAL CONC. (cu. yds)				4.5

NO DEDUCTIONS HAVE BEEN MADE TO ACCOMODATE CATCH BASIN OPENING.



DESIGN SERVICES UNIT
STANDARDS AND SPECIAL DESIGN
Office 919-250-4128 FAX 919-250-4119

TRAFFIC BEARING CATCH BASIN

ORIGINAL BY: _____ DATE: _____
 MODIFIED BY: rnbritt DATE: 2-10-04
 CHECKED BY: C. B. Howerton DATE: 2-10-04
 FILE SPEC.: details/nbritt/eng11sh/b3157tcbcb.dgn

5/14/99
 I:\FEB-2004 08:20
 W:\Special_details\nbritt\english\b3157tcbcb.dgn
 RNBritt AI DS203039