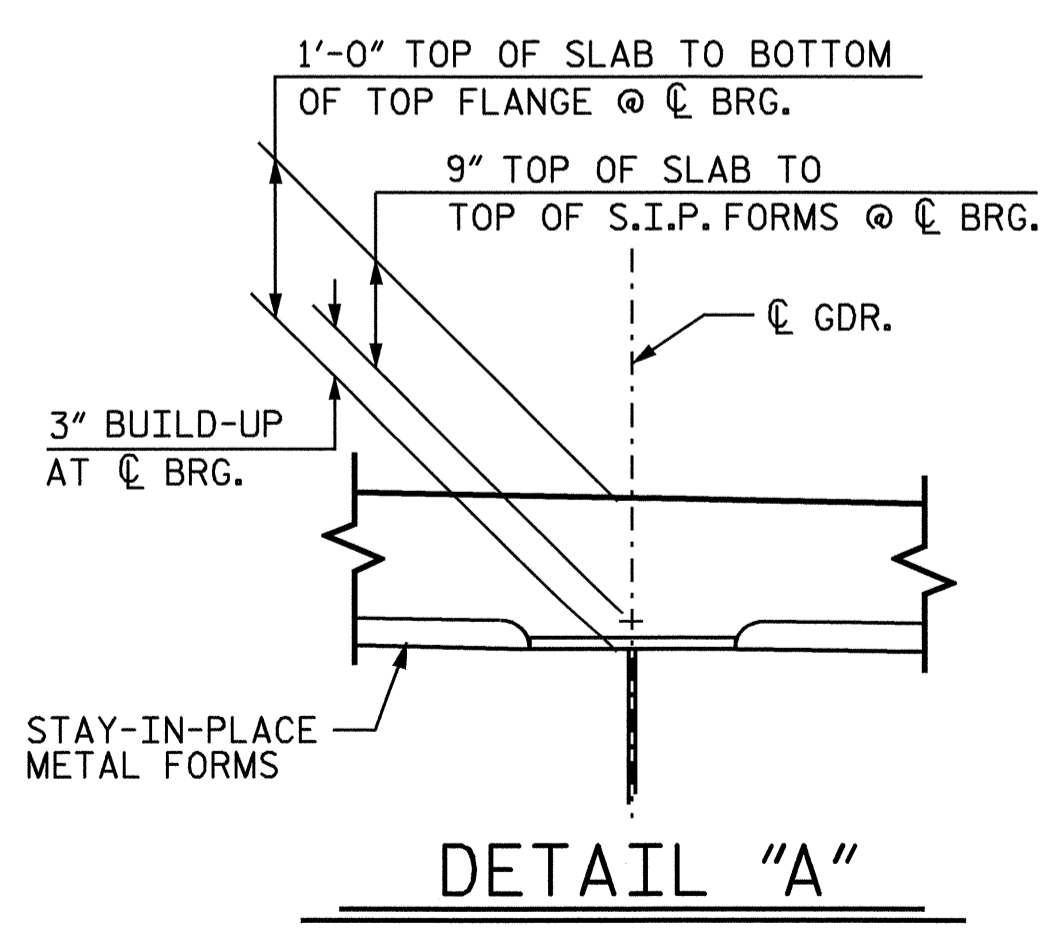


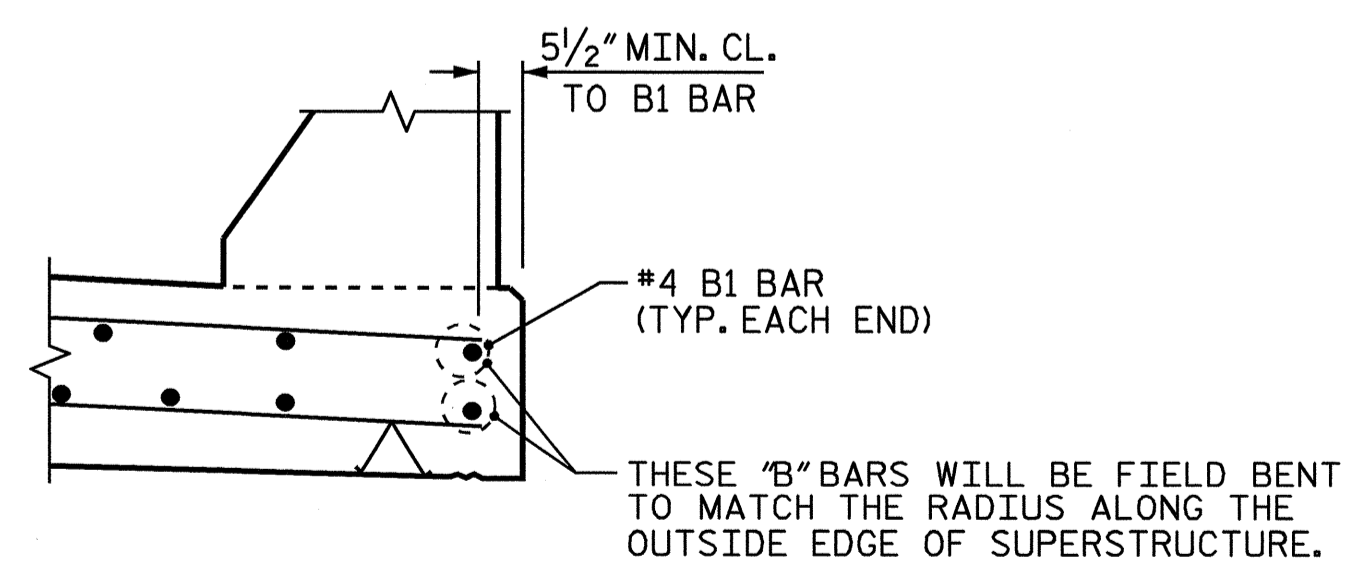
PART TYPICAL SECTION
 SHOWING END BENT DIAPHRAGM

PART TYPICAL SECTION
 SHOWING INTERMEDIATE DIAPHRAGM

* RADIAL DIMENSION
 ** RADIAL DIMENSION THRU WORKPOINT

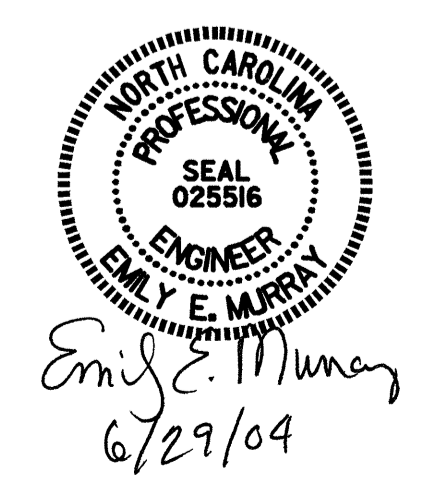


DETAIL "A"



DETAIL "B"
 (RIGHT SIDE OVERHANG SHOWN, LEFT SIDE SIMILAR)

NOTES:
 PROVIDE 1/4" HIGH BEAM BOLSTERS UPPER AT 4'-0" CTS. ATOP THE METAL STAY-IN-PLACE FORMS TO SUPPORT THE BOTTOM MAT OF 'A' BARS. WHEN USING REMOVABLE FORMS, PROVIDE CONTINUOUS HIGH CHAIRS FOR METAL DECK (C.H.C.M.) @ 4'-0" CTS. WITH A HEIGHT TO SUPPORT THE BOTTOM MAT OF 'A' BARS A CLEAR DISTANCE OF 2/2" ABOVE THE TOP OF THE REMOVABLE FORM.
 THE CONTRACTOR MAY, WHEN NECESSARY, PROPOSE A SCHEME FOR AVOIDING INTERFERENCE BETWEEN METAL STAY-IN-PLACE FORM SUPPORTS OR FORMS AND GIRDER STIFFENERS OR CONNECTOR PLATES. THE PROPOSAL SHALL BE INDICATED, AS APPROPRIATE, ON EITHER THE STEEL WORKING DRAWINGS OR THE METAL STAY-IN-PLACE FORM WORKING DRAWINGS.
 BARRIER RAIL IN SPAN SHALL NOT BE CAST UNTIL ALL SLAB CONCRETE HAS BEEN CAST AND HAS REACHED A MINIMUM COMPRESSIVE STRENGTH OF 3,000 PSI.
 PVC DECK DRAINS SHALL BE PAINTED WITH TWO COATS OF BROWN PRIMER MEETING THE REQUIREMENTS OF ARTICLE 1080-12 OF THE STANDARD SPECIFICATIONS. EACH COAT SHALL BE 2 DRY MILS THICK. DECK DRAINS SHALL BE ROUGHENED PRIOR TO PAINTING. NO SEPARATE PAYMENT SHALL BE MADE FOR PAINTING PVC DECK DRAINS AS THIS IS CONSIDERED INCIDENTAL TO PAY ITEM FOR REINFORCED CONCRETE DECK SLAB.



PROJECT NO. B-3157
DAVIDSON COUNTY
 STATION: 29+25.37 -L-
 SHEET 1 OF 2

| | | | | | |
|--|-----|-------|-----|-----|--------------------|
| STATE OF NORTH CAROLINA DEPARTMENT OF TRANSPORTATION RALEIGH | | | | | |
| SUPERSTRUCTURE TYPICAL SECTION | | | | | |
| LEFT LANE | | | | | |
| REVISIONS | | | | | |
| NO. | BY: | DATE: | NO. | BY: | DATE: |
| 1 | | | 3 | | |
| 2 | | | 4 | | |
| | | | | | SHEET NO. S-5 |
| | | | | | TOTAL SHEETS 56 |

DRAWN BY : PEGGY ADKINS DATE : 2-03
 CHECKED BY : M. M. PARSONS DATE : 5-03