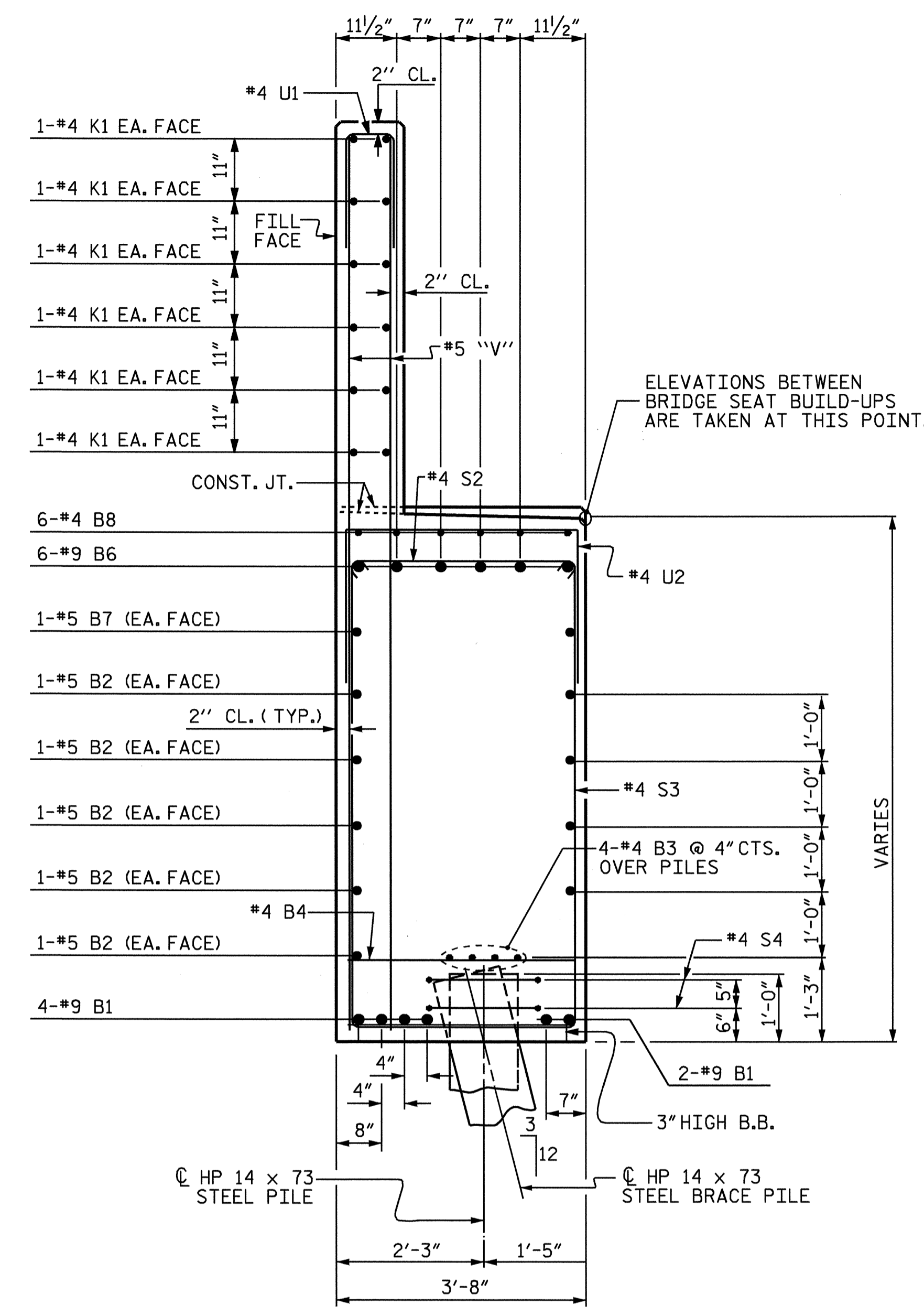
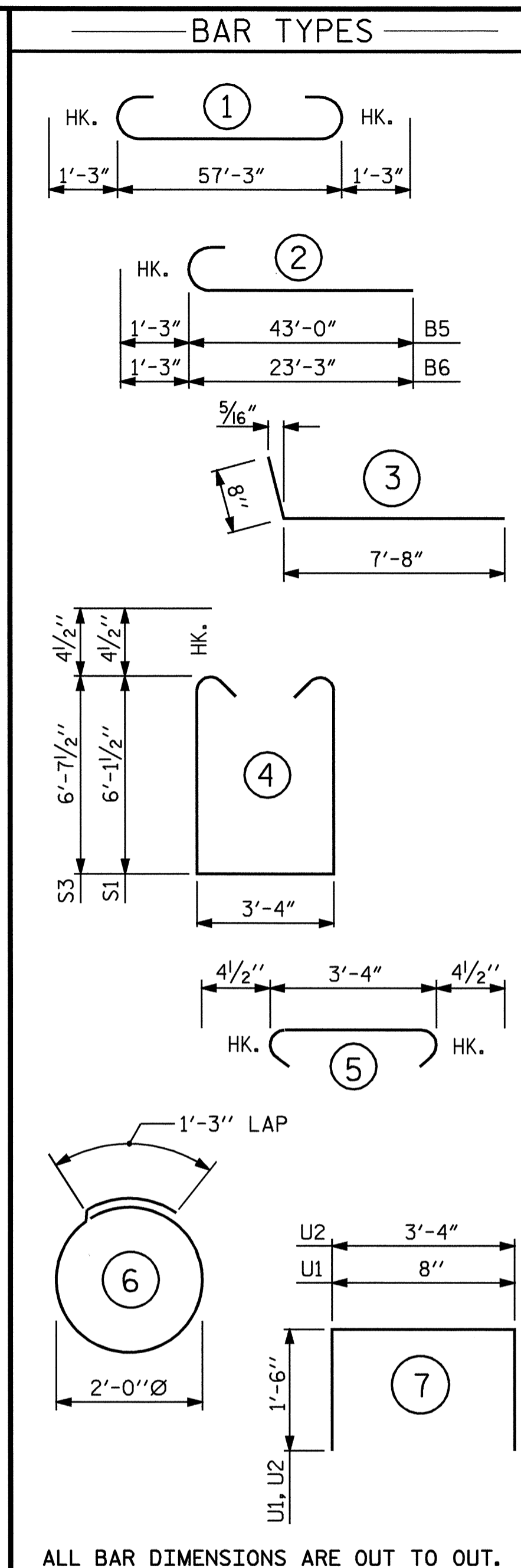


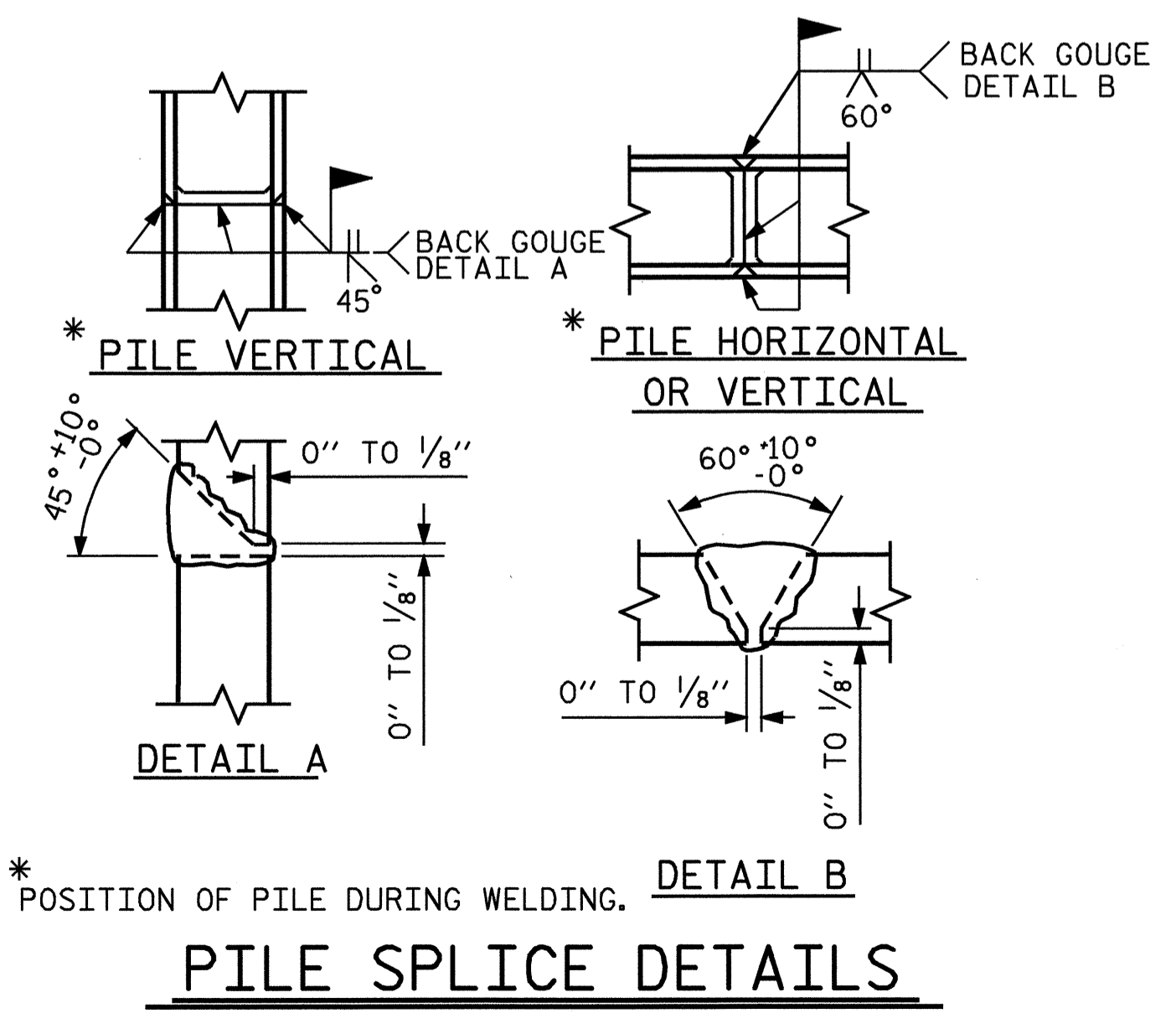
SECTION A-A



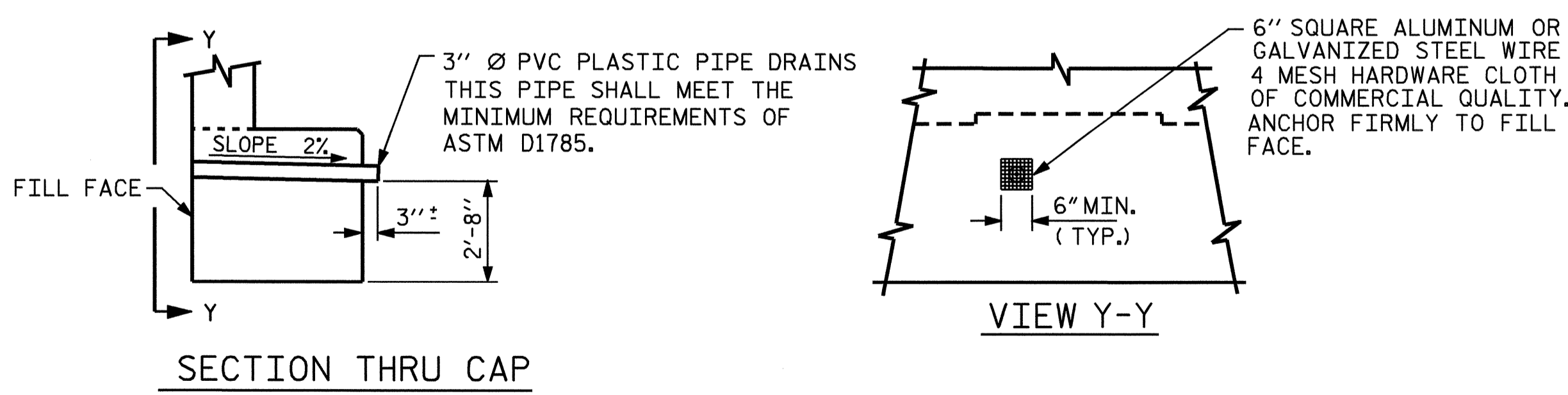
SECTION B-B



BILL OF MATERIAL					
END BENT #2					
BAR	NO.	SIZE	TYPE	LENGTH	WEIGHT
B1	6	9	1	59'-9"	1219
B2	10	5	STR	57'-5"	599
B3	8	4	STR	30'-0"	160
B4	18	4	STR	3'-4"	40
B5	6	9	2	44'-3"	903
B6	6	9	2	24'-6"	500
B7	2	5	STR	17'-7"	37
B8	6	4	STR	4'-3"	17
B9	6	4	STR	2'-4"	9
B10	12	4	STR	9'-6"	76
B11	6	4	STR	7'-11"	32
H1	30	5	3	8'-4"	261
K1	24	4	STR	30'-0"	481
K2	4	5	STR	2'-9"	11
S1	35	4	4	16'-4"	382
S2	59	4	5	4'-1"	161
S3	24	4	4	17'-4"	278
S4	24	4	6	7'-7"	122
U1	56	4	7	3'-8"	137
U2	27	4	7	6'-4"	114
V1	32	5	STR	12'-3"	409
V2	42	5	STR	11'-10"	518
V3	34	5	STR	11'-7"	411
V4	16	5	STR	12'-11"	216
V5	8	5	STR	13'-1"	109
V6	4	5	STR	13'-4"	56
REINFORCING STEEL					LBS 7258
CLASS "A" CONCRETE BREAKDOWN					
POUR #1				CAP & LOWER PART OF WING	56.4 YD3
POUR #2				BACKWALL & UPPER PART OF WING	13.6 YD3
CLASS "A" CONCRETE TOTAL					70.0 YD3
HP 14 x 73 STEEL PILES					
NO. 12				LIN. FT.	660



PILE SPLICE DETAILS



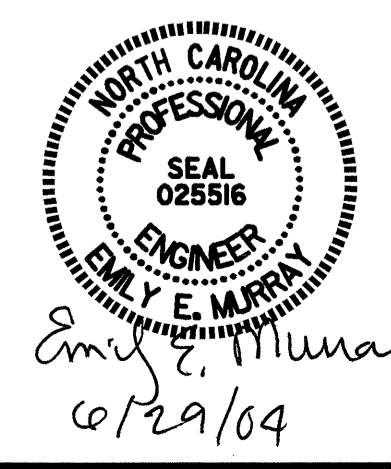
SECTION THRU CAP

VIEW Y-Y

NOTE: NO SEPARATE PAYMENT WILL BE MADE FOR FURNISHING AND INSTALLING THE PVC PLASTIC PIPE DRAINS, HARDWARE CLOTH AND FASTENERS. THE ENTIRE COST OF THIS WORK SHALL BE INCLUDED IN THE UNIT CONTRACT PRICE BID FOR THE SEVERAL PAY ITEMS.

PIPE DRAIN DETAILS

DRAWN BY: T.L. AVERETTE DATE: 07-03
 CHECKED BY: W.D. CRUTCHER DATE: 07-03



PROJECT NO. B-3157
 DAVIDSON COUNTY
 STATION: 29+25.37 -L-
 SHEET 3 OF 3

STATE OF NORTH CAROLINA DEPARTMENT OF TRANSPORTATION RALEIGH					
SUBSTRUCTURE					
END BENT #2					
RIGHT LANE					
REVISIONS					
NO.	BY:	DATE:	NO.	BY:	DATE:
1			3		
2			4		