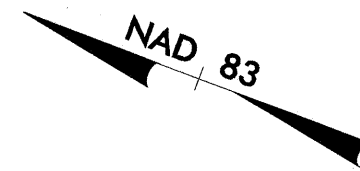


PROJECT REFERENCE NO. U-0620	SHEET NO. UC-2
DESIGNED BY: DMP	
DRAWN BY: DMP	
CHECKED BY: DMP	
APPROVED BY:	
REVISED:	
NORTH CAROLINA DEPARTMENT OF TRANSPORTATION	
DESIGN SERVICES UNIT PHONE: (919) 250-4128 FAX: (919) 250-4119	
UTILITY CONSTRUCTION PLANS ONLY	



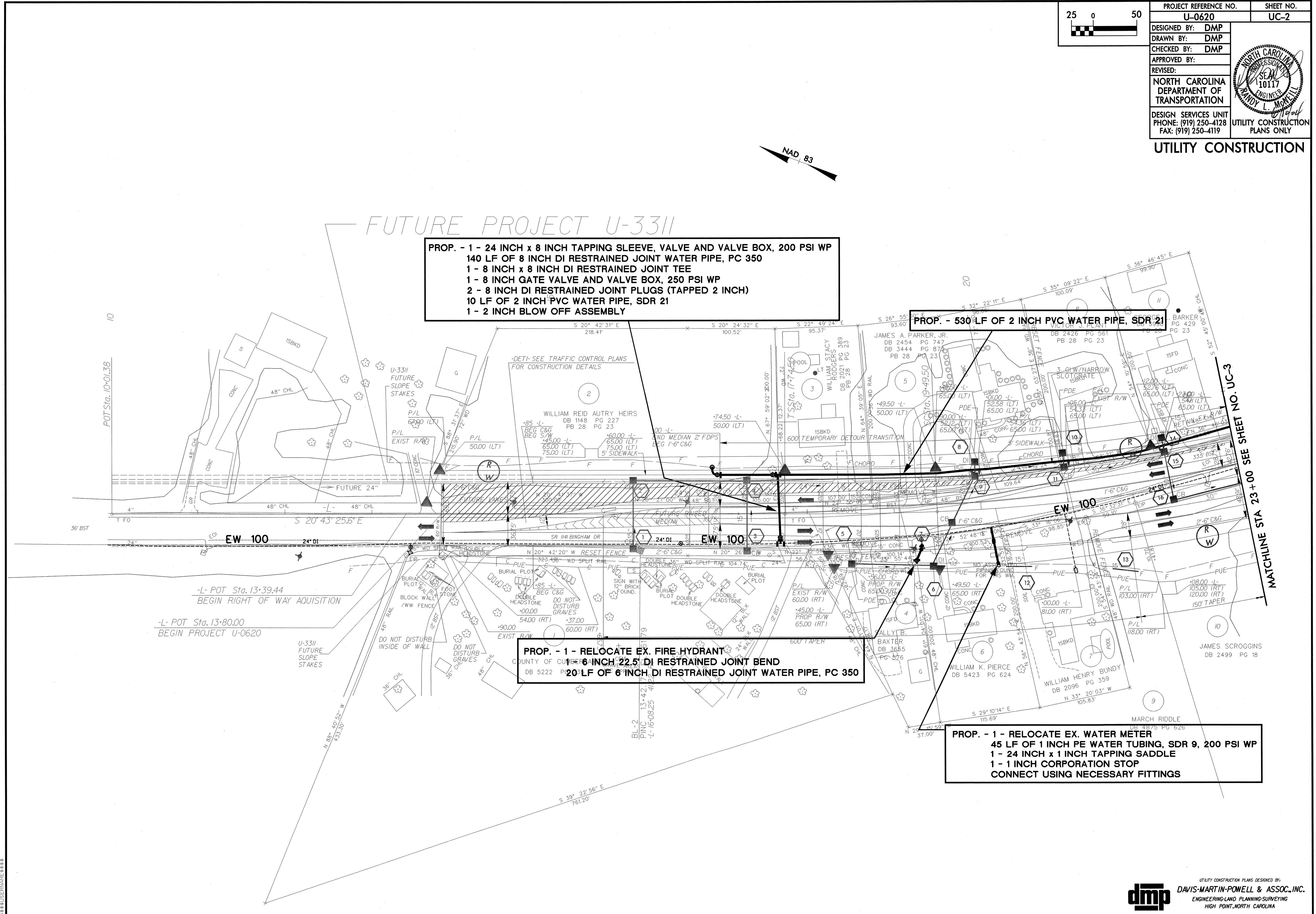
FUTURE PROJECT U-3311

PROP. - 1 - 24 INCH x 8 INCH TAPPING SLEEVE, VALVE AND VALVE BOX, 200 PSI WP
140 LF OF 8 INCH DI RESTRAINED JOINT WATER PIPE, PC 350
1 - 8 INCH x 8 INCH DI RESTRAINED JOINT TEE
1 - 8 INCH GATE VALVE AND VALVE BOX, 250 PSI WP
2 - 8 INCH DI RESTRAINED JOINT PLUGS (TAPPED 2 INCH)
10 LF OF 2 INCH PVC WATER PIPE, SDR 21
1 - 2 INCH BLOW OFF ASSEMBLY

PROP. - 530 LF OF 2 INCH PVC WATER PIPE, SDR 21

PROP. - 1 - RELOCATE EX. FIRE HYDRANT
6 INCH, 22.5 DI RESTRAINED JOINT BEND
20 LF OF 6 INCH DI RESTRAINED JOINT WATER PIPE, PC 350

PROP. - 1 - RELOCATE EX. WATER METER
45 LF OF 1 INCH PE WATER TUBING, SDR 9, 200 PSI WP
1 - 24 INCH x 1 INCH TAPPING SADDLE
1 - 1 INCH CORPORATION STOP
CONNECT USING NECESSARY FITTINGS



POT Sta. 10+01.38

MATCHLINE STA 23+00 SEE SHEET NO. UC-3

STAKE MARKING: 1/2\"/>