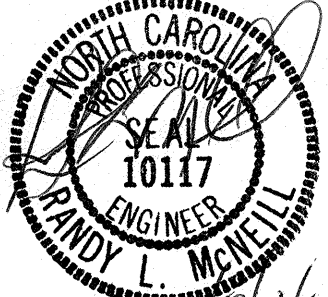
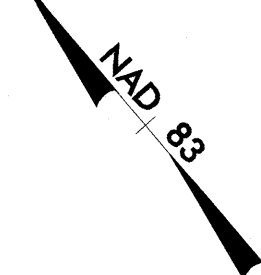
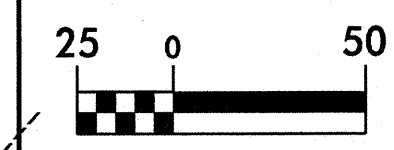


PROJECT REFERENCE NO. U-0620	SHEET NO. UC-3
DESIGNED BY: DMP	
DRAWN BY: DMP	
CHECKED BY: DMP	
APPROVED BY:	
REVISED:	NORTH CAROLINA DEPARTMENT OF TRANSPORTATION
DESIGN SERVICES UNIT PHONE: (919) 250-4128 FAX: (919) 250-4119	UTILITY CONSTRUCTION PLANS ONLY

UTILITY CONSTRUCTION



PROP. - 1 - RELOCATE EX. WATER METER
 75 LF OF 1 INCH PE WATER TUBING, SDR 9, 200 PSI WP
 1 - 24 INCH x 1 INCH TAPPING SADDLE
 1 - 1 INCH CORPORATION STOP
 CONNECT USING NECESSARY FITTINGS

PROP. - 350 LF OF 2 INCH PVC WATER PIPE, SDR 21
 1 - 2 INCH CORPORATION STOP
 1 - 2 INCH BALL VALVE AND VALVE BOX, 200 PSI WP
 1 - 8 INCH x 2 INCH TAPPING SADDLE

PROP. 50 LF FILL OR REMOVE ABANDONED 24 INCH PIPE, DI WATER (SEE SPECIAL PROVISIONS)

PROP. MANHOLE

PROP. - 1 - BREAK DOWN, PLUG, AND FILL ABANDONED UTILITY MANHOLE
 BEGIN BRIDGE
 -L- STA. 31+37.00
 -L- STA. 31+47.00

PROP. 2 - 24 INCH DI RESTRAINED JOINT PLUG

PROP. 180 LF FILL OR REMOVE ABANDONED 24 INCH PIPE, DI WATER (SEE SPECIAL PROV.)

PROP. - 1 - 24 INCH DI RESTRAINED JOINT PLUG

PROP. - 1 - 6 INCH DI RESTRAINED JOINT PLUG

PROP. 1 - RELOCATE EX. FIRE HYDRANT
 1 - 24 INCH x 8 INCH TAPPING SLEEVE, VALVE AND VALVE BOX, 200 PSI WP
 70 LF OF 8 INCH DI RESTRAINED JOINT WATER PIPE, PC 350
 1 - 8 INCH GATE VALVE AND VALVE BOX, 250 PSI WP
 1 - 8 INCH x 6 INCH DI RESTRAINED JOINT REDUCER
 10 LF OF 6 INCH DI RESTRAINED JOINT WATER PIPE, PC 350

PROP. 2 - REMOVE EXISTING STEEL PILE PIERS

PROP. 170 LF FILL OR REM ABANDONED 24 INCH PIPE, DI WATER (SEE SPECIAL PROVISIONS)

PROP. PERM. UTILITY ESMT.

PROP. - 1 - RELOCATE EX. FIRE HYDRANT
 75 LF OF 6 INCH DI RW WATER PIPE, PC 350
 CONNECT USING NECESSARY FITTINGS

PROP. - 1 - 24 INCH x 24 INCH TAPPING SLEEVE, VALVE, AND VALVE BOX, 200 PSI WP
 270 LF OF 24 INCH DI RESTRAINED JOINT WATER PIPE, PC 250
 3 - 24 INCH 45° DI RESTRAINED JOINT BEND(S)

PROP. - 1 - 24 INCH x 24 INCH TAPPING SLEEVE, VALVE, AND VALVE BOX, 200 PSI WP
 100 LF OF 24 INCH DI RESTR. JOINT WATER PIPE, PC 250
 1 - 24 INCH x 24 INCH DI RESTRAINED JOINT TEE
 1 - 24 INCH x 16 INCH DI RESTRAINED JOINT REDUCER
 30 LF OF 16 INCH DI RESTR. JOINT WATER PIPE, PC 250
 2 - 16 INCH 45° DI RESTRAINED JOINT BEND(S)
 1 - 16 INCH x 16 INCH TAPPING SLEEVE, VALVE AND VALVE BOX, 200 PSI WP
 1 - 16 INCH DI RESTRAINED JOINT PLUG

PROP. - 7 LF OF 24 INCH DI FLANGED TO RESTRAINED JOINT TRANSITION PIPE, CLASS 53
 40 LF 24 INCH DI FLANGED WATER PIPE, CLASS 53
 7 LF OF 24 INCH DI FLANGED TO RESTRAINED JOINT TRANSITION PIPE, CLASS 53
 2 - STEEL PILE PIERS

PROP. - 1 - 24 INCH GATE VALVE AND VALVE BOX, 250 PSI WP
 250 LF OF 24 INCH DI RESTRAINED JOINT WATER PIPE, PC 250
 1 - 24 INCH 22.5° DI RESTRAINED JOINT BEND(S)
 1 - 24 INCH 45° DI RESTRAINED JOINT BEND(S)

ALL DRIVEWAYS ARE 20' WIDE UNLESS OTHERWISE NOTED

MATCHLINE STA 23+00 SEE SHEET NO. UC-2

MATCHLINE STA 36+00 SEE SHEET NO. UC-4