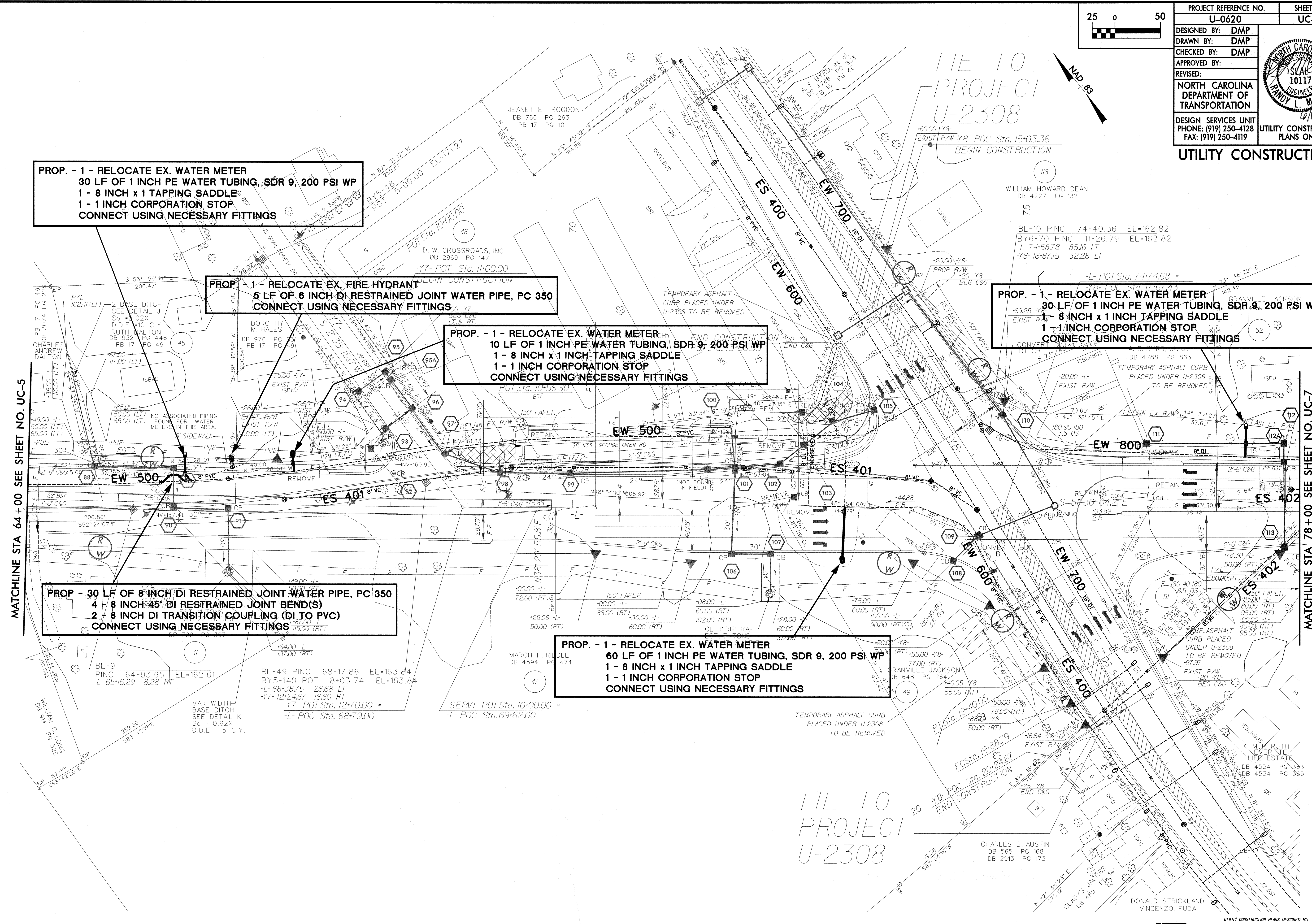


PROJECT REFERENCE NO.	SHEET NO.
U-0620	UC-6
DESIGNED BY: DMP	
DRAWN BY: DMP	
CHECKED BY: DMP	
APPROVED BY:	
REVISED:	
NORTH CAROLINA DEPARTMENT OF TRANSPORTATION	
DESIGN SERVICES UNIT PHONE: (919) 250-4128 FAX: (919) 250-4119	UTILITY CONSTRUCTION PLANS ONLY

UTILITY CONSTRUCTION



PROP. - 1 - RELOCATE EX. WATER METER
 30 LF OF 1 INCH PE WATER TUBING, SDR 9, 200 PSI WP
 1 - 8 INCH x 1 INCH TAPPING SADDLE
 1 - 1 INCH CORPORATION STOP
 CONNECT USING NECESSARY FITTINGS

PROP. - 1 - RELOCATE EX. FIRE HYDRANT
 5 LF OF 6 INCH DI RESTRAINED JOINT WATER PIPE, PC 350
 CONNECT USING NECESSARY FITTINGS

PROP. - 1 - RELOCATE EX. WATER METER
 10 LF OF 1 INCH PE WATER TUBING, SDR 9, 200 PSI WP
 1 - 8 INCH x 1 INCH TAPPING SADDLE
 1 - 1 INCH CORPORATION STOP
 CONNECT USING NECESSARY FITTINGS

PROP. - 1 - RELOCATE EX. WATER METER
 30 LF OF 1 INCH PE WATER TUBING, SDR 9, 200 PSI WP
 1 - 8 INCH x 1 INCH TAPPING SADDLE
 1 - 1 INCH CORPORATION STOP
 CONNECT USING NECESSARY FITTINGS

PROP. - 30 LF OF 8 INCH DI RESTRAINED JOINT WATER PIPE, PC 350
 4 - 8 INCH 45° DI RESTRAINED JOINT BEND(S)
 2 - 8 INCH DI TRANSITION COUPLING (DI TO PVC)
 CONNECT USING NECESSARY FITTINGS

PROP. - 1 - RELOCATE EX. WATER METER
 60 LF OF 1 INCH PE WATER TUBING, SDR 9, 200 PSI WP
 1 - 8 INCH x 1 INCH TAPPING SADDLE
 1 - 1 INCH CORPORATION STOP
 CONNECT USING NECESSARY FITTINGS

MATCHLINE STA 64+00 SEE SHEET NO. UC-5

MATCHLINE STA 78+00 SEE SHEET NO. UC-7

TIE TO
PROJECT
U-2308

TIE TO
PROJECT
U-2308