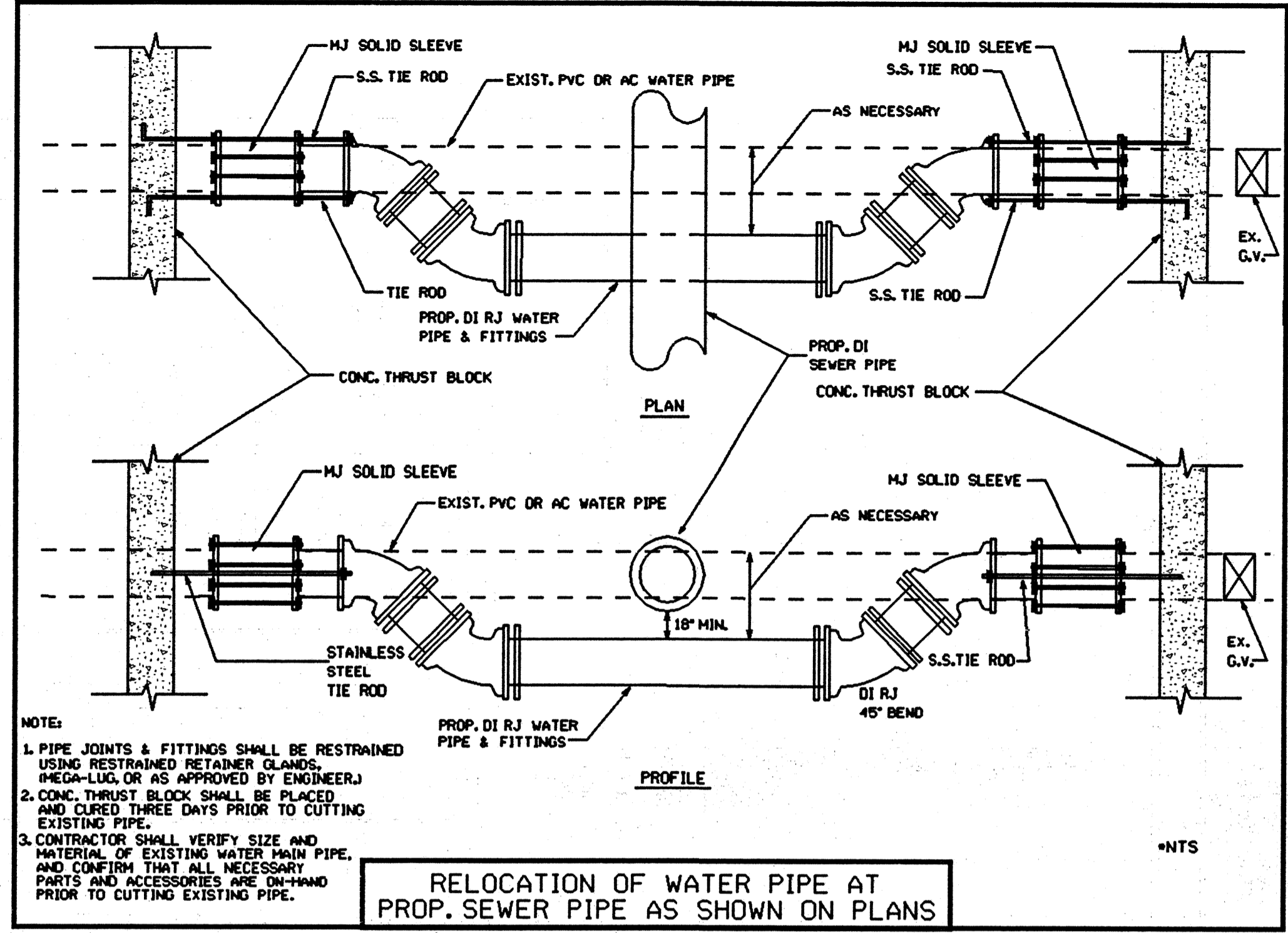


NOTE: IN GROUND PIPE TO BE CUT TO CONNECT TO 45° BEND USING RESTRAINED RETAINER GLANDS

NOTE: ALL AERIAL JOINTS TO BE RIGID RESTRAINED JOINTS

MJ = MECHANICAL JOINT (BELL)
 SP = SPIGOT

DUCTILE IRON WATER LINE DETAIL AT CREEK CROSSING

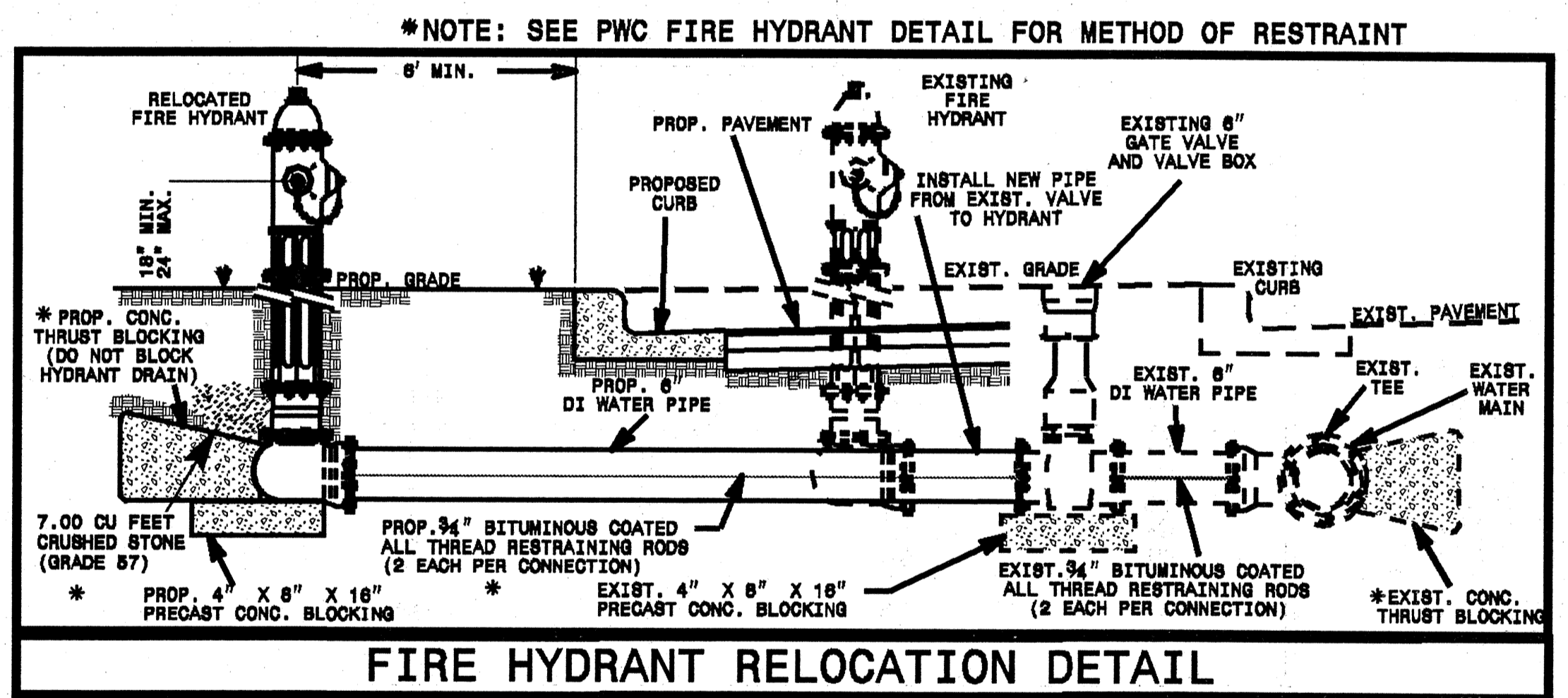


NOTE:
 1. PIPE JOINTS & FITTINGS SHALL BE RESTRAINED USING RESTRAINED RETAINER GLANDS, (MEGA-LUG OR AS APPROVED BY ENGINEER)
 2. CONC. THRUST BLOCK SHALL BE PLACED AND CURED THREE DAYS PRIOR TO CUTTING EXISTING PIPE.
 3. CONTRACTOR SHALL VERIFY SIZE AND MATERIAL OF EXISTING WATER MAIN PIPE, AND CONFIRM THAT ALL NECESSARY PARTS AND ACCESSORIES ARE ON-HAND PRIOR TO CUTTING EXISTING PIPE.

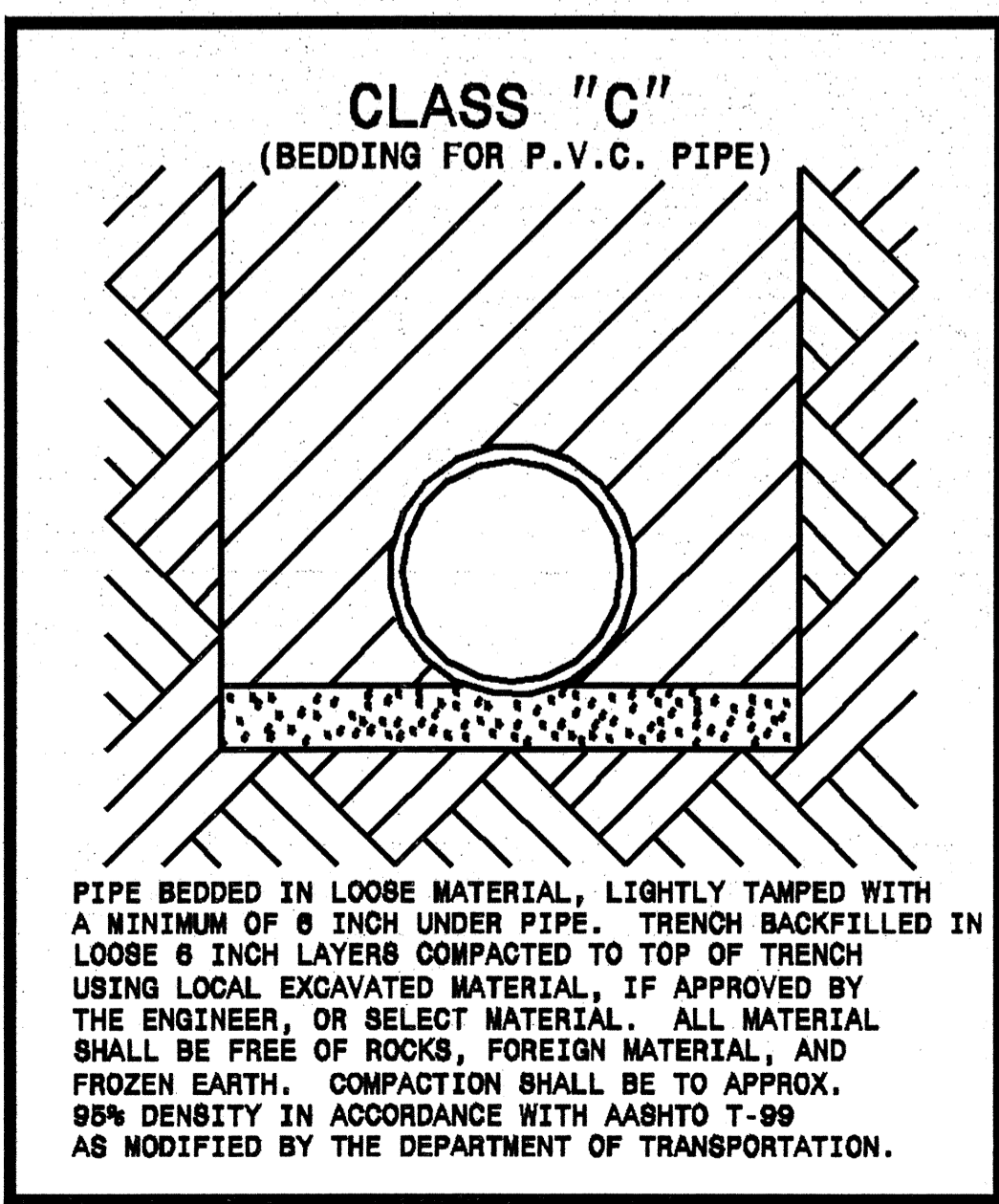
RELOCATION OF WATER PIPE AT PROP. SEWER PIPE AS SHOWN ON PLANS

MAXIMUM TRENCH WIDTH AT TOP OF PIPE

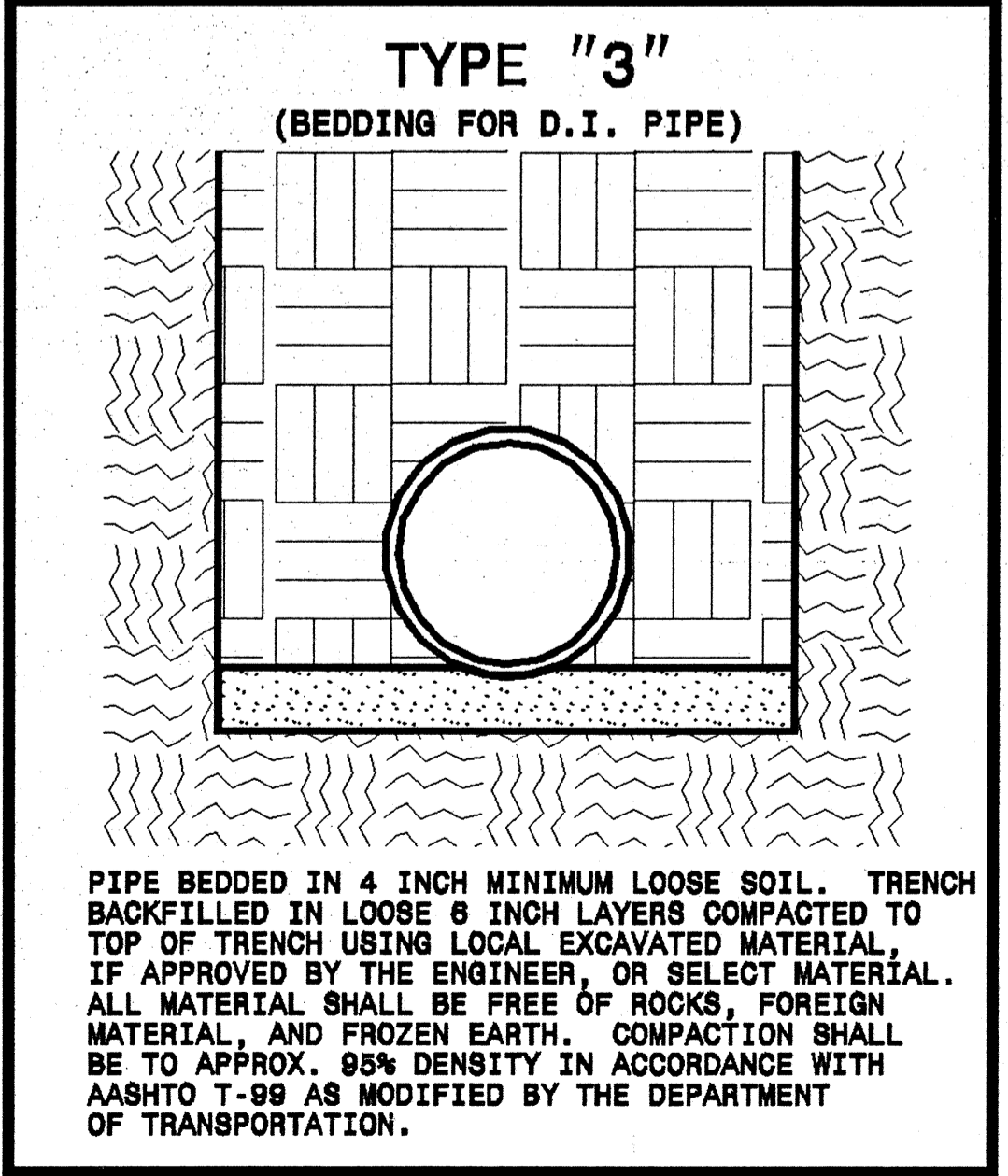
NOMINAL PIPE SIZE (INCHES)	TRENCH WIDTH (INCHES)	NOMINAL PIPE SIZE (INCHES)	TRENCH WIDTH (INCHES)
4	28	20	44
6	30	24	48
8	32	30	54
10	34	36	60
12	36	42	66
14	38	48	72
16	40	54	78
18	42		



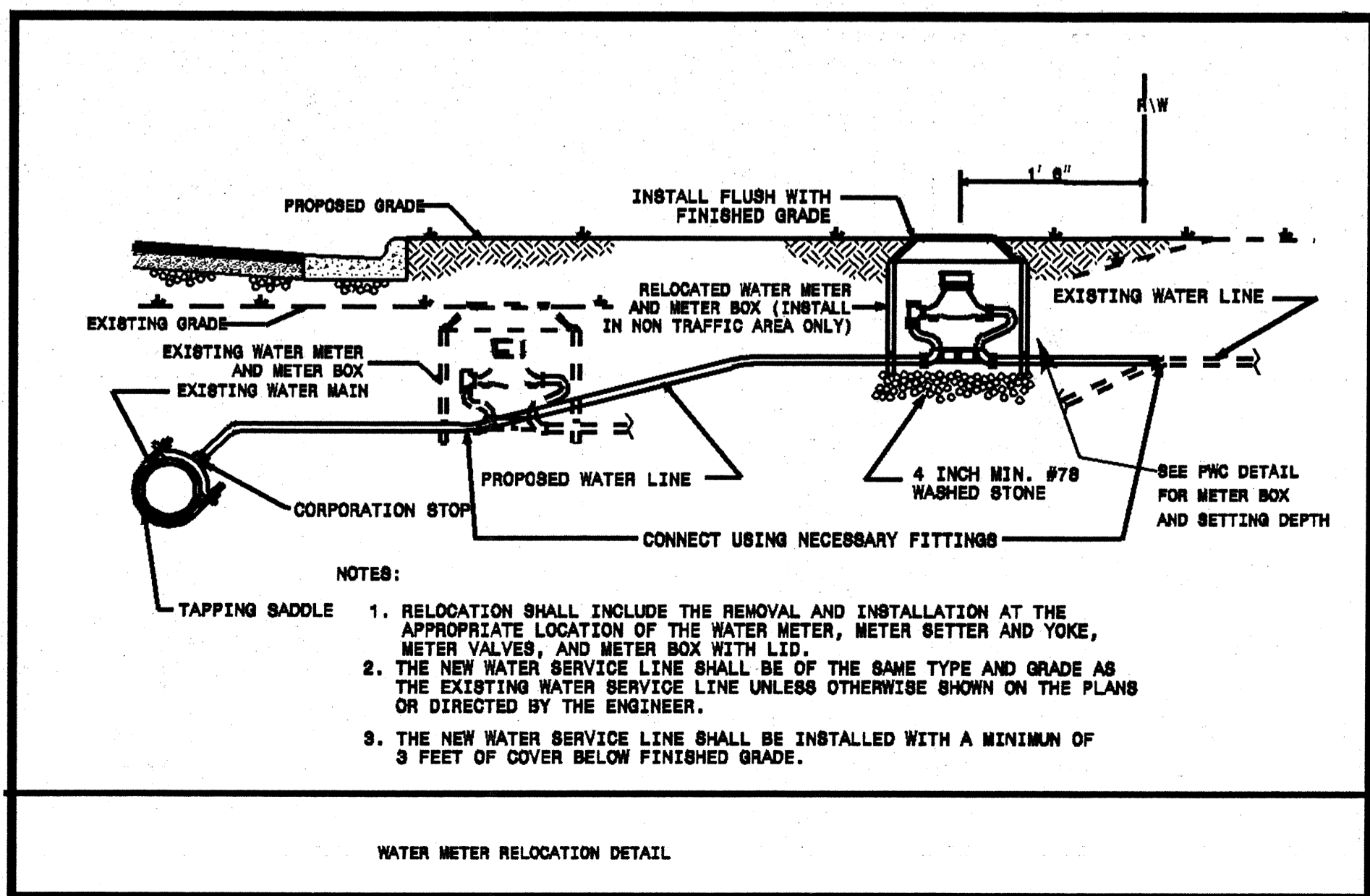
FIRE HYDRANT RELOCATION DETAIL



PIPE BEDDED IN LOOSE MATERIAL, LIGHTLY TAMPED WITH A MINIMUM OF 6 INCH UNDER PIPE. TRENCH BACKFILLED IN LOOSE 6 INCH LAYERS COMPACTED TO TOP OF TRENCH USING LOCAL EXCAVATED MATERIAL, IF APPROVED BY THE ENGINEER, OR SELECT MATERIAL. ALL MATERIAL SHALL BE FREE OF ROCKS, FOREIGN MATERIAL, AND FROZEN EARTH. COMPACTION SHALL BE TO APPROX. 95% DENSITY IN ACCORDANCE WITH AASHTO T-99 AS MODIFIED BY THE DEPARTMENT OF TRANSPORTATION.

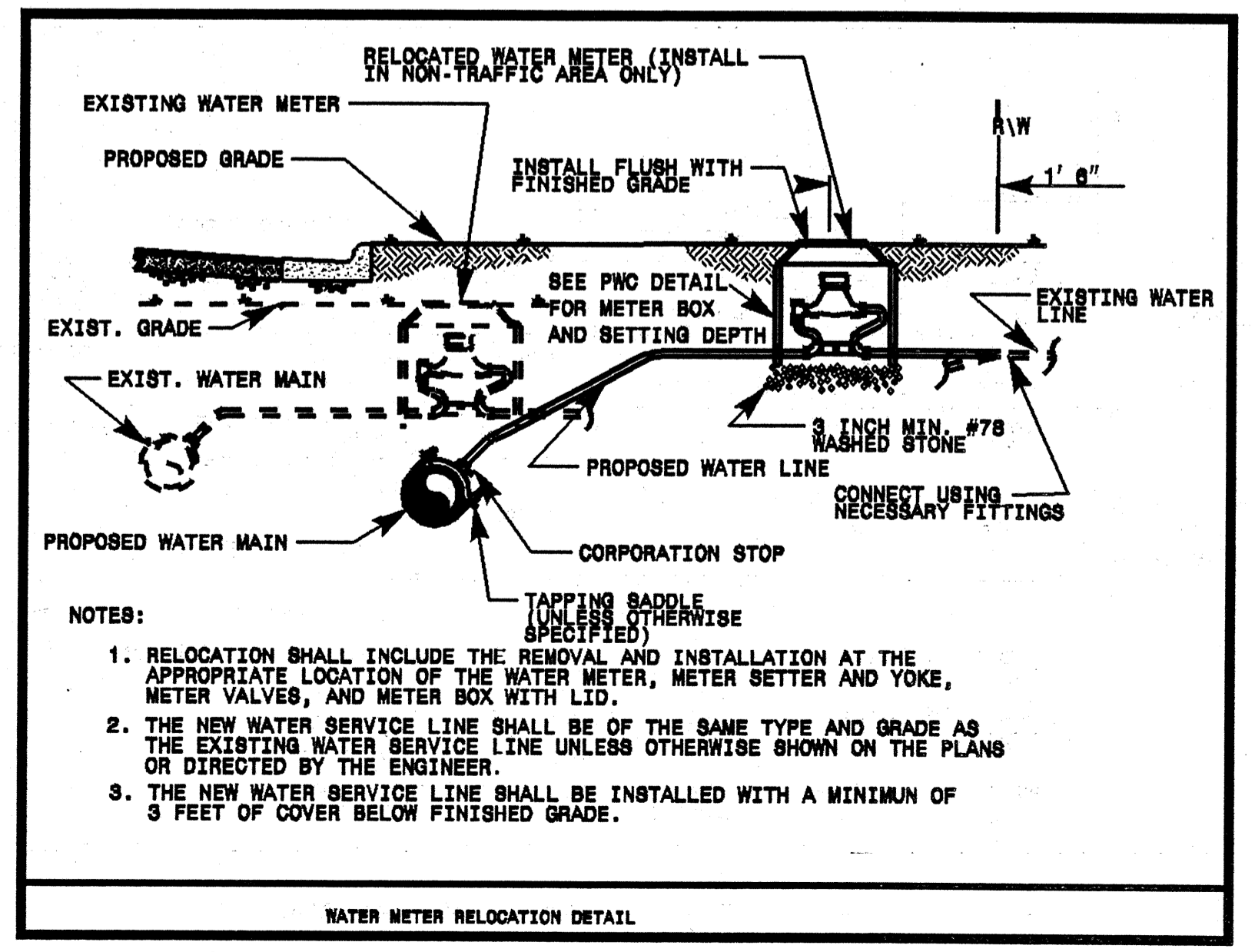


PIPE BEDDED IN 4 INCH MINIMUM LOOSE SOIL. TRENCH BACKFILLED IN LOOSE 6 INCH LAYERS COMPACTED TO TOP OF TRENCH USING LOCAL EXCAVATED MATERIAL, IF APPROVED BY THE ENGINEER, OR SELECT MATERIAL. ALL MATERIAL SHALL BE FREE OF ROCKS, FOREIGN MATERIAL, AND FROZEN EARTH. COMPACTION SHALL BE TO APPROX. 95% DENSITY IN ACCORDANCE WITH AASHTO T-99 AS MODIFIED BY THE DEPARTMENT OF TRANSPORTATION.



NOTES:
 1. RELOCATION SHALL INCLUDE THE REMOVAL AND INSTALLATION AT THE APPROPRIATE LOCATION OF THE WATER METER, METER SETTER AND YOKE, METER VALVES, AND METER BOX WITH LID.
 2. THE NEW WATER SERVICE LINE SHALL BE OF THE SAME TYPE AND GRADE AS THE EXISTING WATER SERVICE LINE UNLESS OTHERWISE SHOWN ON THE PLANS OR DIRECTED BY THE ENGINEER.
 3. THE NEW WATER SERVICE LINE SHALL BE INSTALLED WITH A MINIMUM OF 3 FEET OF COVER BELOW FINISHED GRADE.

WATER METER RELOCATION DETAIL



NOTES:
 1. RELOCATION SHALL INCLUDE THE REMOVAL AND INSTALLATION AT THE APPROPRIATE LOCATION OF THE WATER METER, METER SETTER AND YOKE, METER VALVES, AND METER BOX WITH LID.
 2. THE NEW WATER SERVICE LINE SHALL BE OF THE SAME TYPE AND GRADE AS THE EXISTING WATER SERVICE LINE UNLESS OTHERWISE SHOWN ON THE PLANS OR DIRECTED BY THE ENGINEER.
 3. THE NEW WATER SERVICE LINE SHALL BE INSTALLED WITH A MINIMUM OF 3 FEET OF COVER BELOW FINISHED GRADE.

WATER METER RELOCATION DETAIL

* ALTERNATE