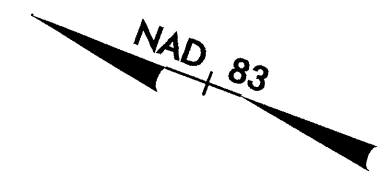


SEE SHEET 25 FOR -L- PROFILE
 ALL DRIVEWAYS ARE 20' WIDE
 UNLESS OTHERWISE NOTED
 BREAK UP AND REMOVE EXISTING PAVEMENT
 UNDERNEATH PROPOSED RAISED MEDIAN.

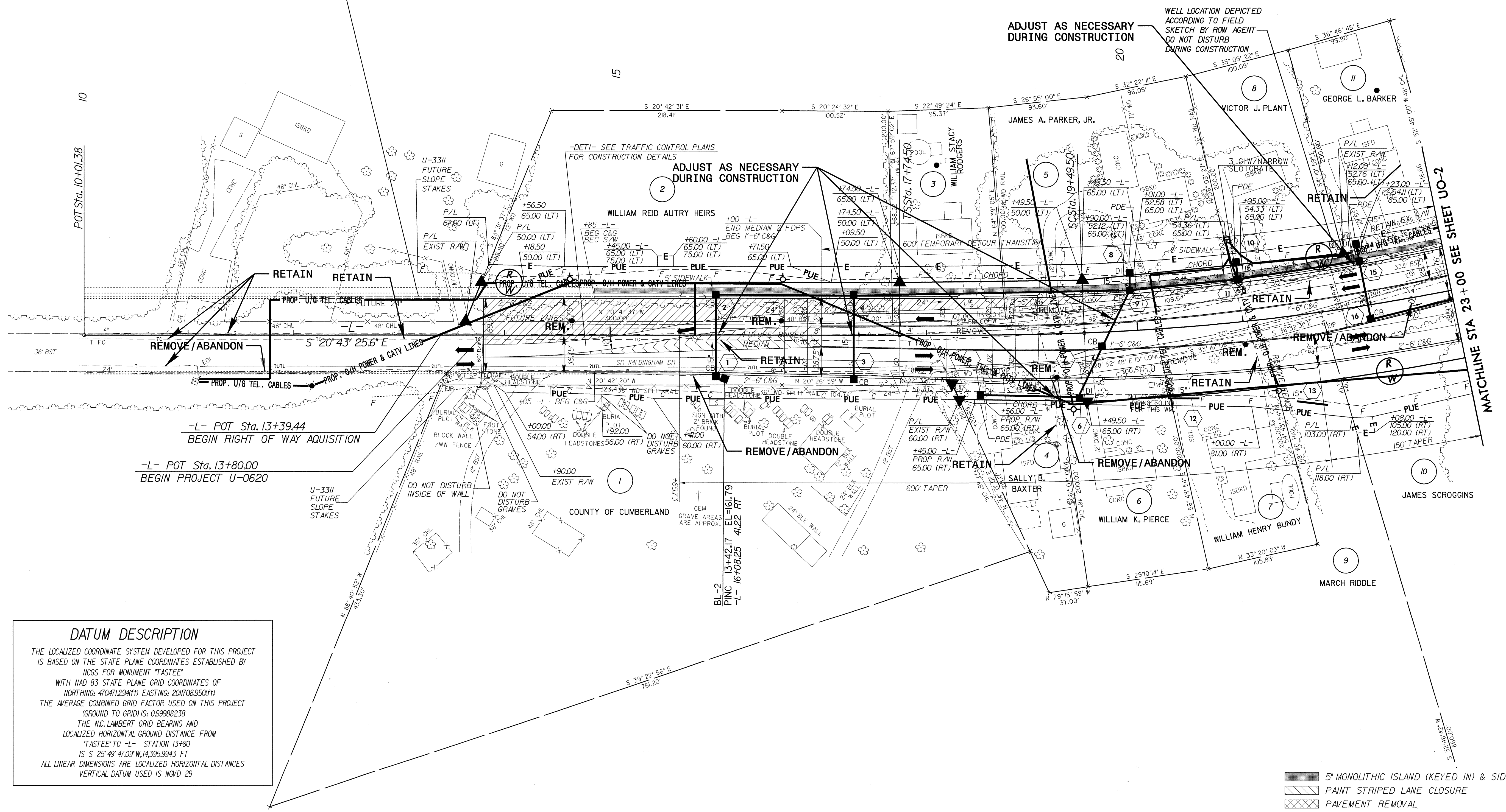
UTILITIES BY OTHERS

NOTE:
 ALL PROPOSED UTILITY WORK
 SHOWN ON THIS SHEET WILL
 BE DONE BY OTHERS

-L-		
Pls Sta 18+91.17	Pl Sta 21+46.76	Pls Sta 24+15.30
Os = 2' 11" 15.0"	Δ = 9' 50" 20.5" (LT)	Os = 1' 29" 59.8"
Ls = 175.00'	D = 2' 30" 00.0"	Os = 1' 52" 30.2"
LT = 116.68'	L = 393.56'	Ls = 150.00'
ST = 58.34'	T = 197.27'	LT = 77.80'
	R = 2,291.83'	ST = 72.24'
	SE = 0.040	
	INC = 43.75	



FUTURE PROJECT U-3311



DATUM DESCRIPTION
 THE LOCALIZED COORDINATE SYSTEM DEVELOPED FOR THIS PROJECT IS BASED ON THE STATE PLANE COORDINATES ESTABLISHED BY NCGS FOR MONUMENT "TASSEE"
 WITH NAD 83 STATE PLANE GRID COORDINATES OF
 NORTHING: 4704712941ft EASTING: 2017083501ft
 THE AVERAGE COMBINED GRID FACTOR USED ON THIS PROJECT (GROUND TO GRID) IS: 0.99988238
 THE N.C. LAMBERT GRID BEARING AND LOCALIZED HORIZONTAL GROUND DISTANCE FROM "TASSEE" TO -L- STATION 13+80 IS S 25° 49' 47.09" W, 14,395.9943 FT
 ALL LINEAR DIMENSIONS ARE LOCALIZED HORIZONTAL DISTANCES
 VERTICAL DATUM USED IS NGVD 29

- 5' MONOLITHIC ISLAND (KEYED IN) & SIDEWALK
- PAINT STRIPED LANE CLOSURE
- PAVEMENT REMOVAL

8/17/99

03 JUN 2004 08:31
 P:\0620\UT_RDY_PSH_04_U001.psh.dgn
 167122