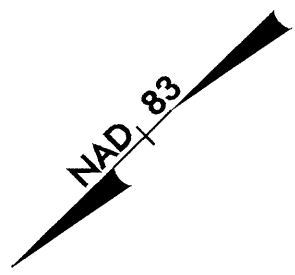


UTILITIES BY OTHERS

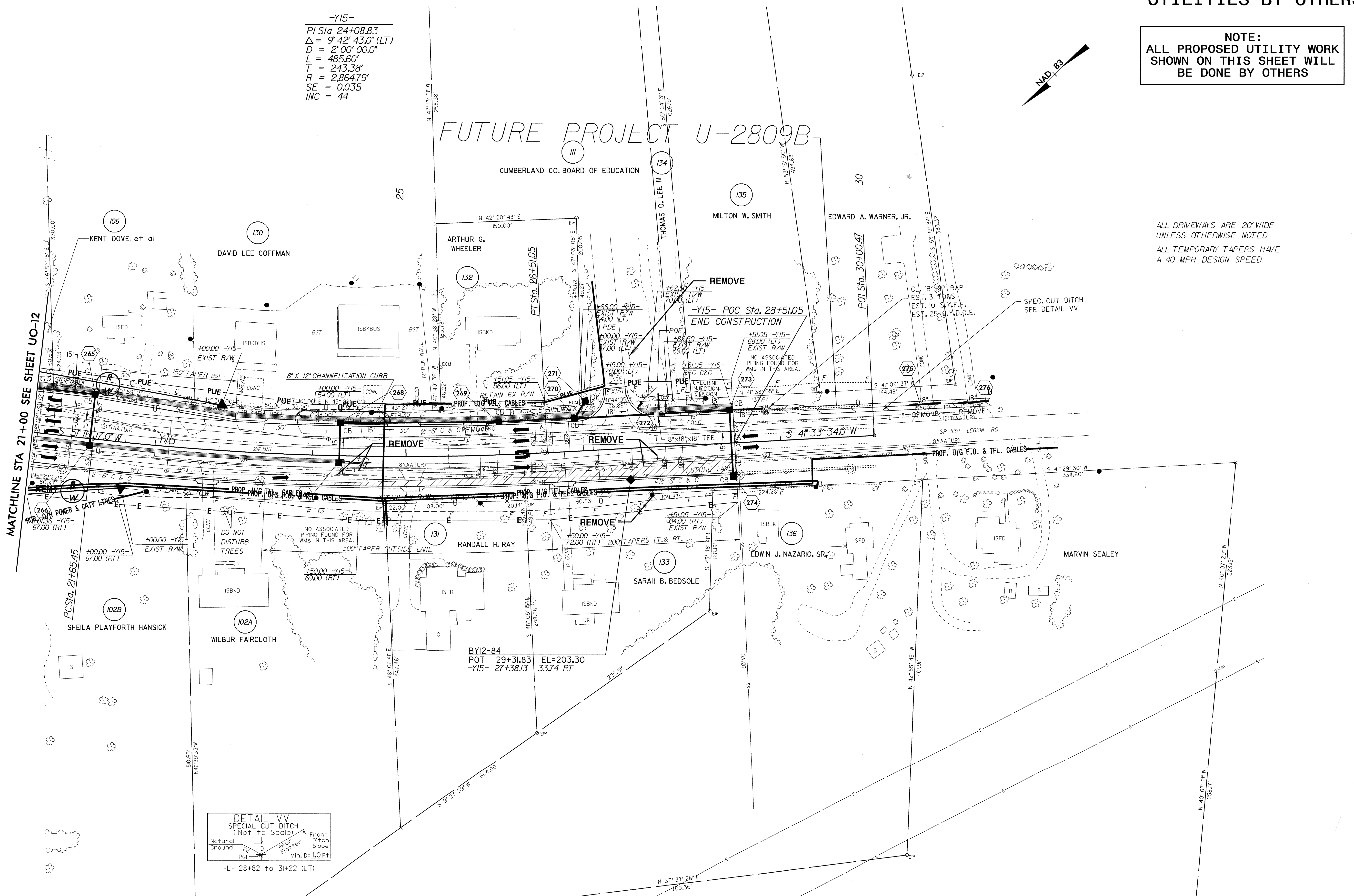
NOTE:
ALL PROPOSED UTILITY WORK SHOWN ON THIS SHEET WILL BE DONE BY OTHERS

-Y15-
PI Sta. 24+08.83
 $\Delta = 9^{\circ} 42' 43.0''$ (LT)
D = 2' 00" 00.0"
L = 485.60'
T = 243.38'
R = 2,864.79'
SE = 0.035
INC = 44



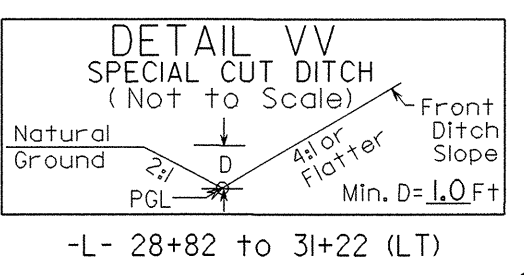
FUTURE PROJECT U-2809B

CUMBERLAND CO. BOARD OF EDUCATION



ALL DRIVEWAYS ARE 20' WIDE UNLESS OTHERWISE NOTED
ALL TEMPORARY TAPERS HAVE A 40 MPH DESIGN SPEED

MATCHLINE STA 21+00 SEE SHEET UO-12



- 5' MONOLITHIC ISLAND (KEYED IN) & SIDEWALK
- PAINT STRIPED LANE CLOSURE
- PAVEMENT REMOVAL