

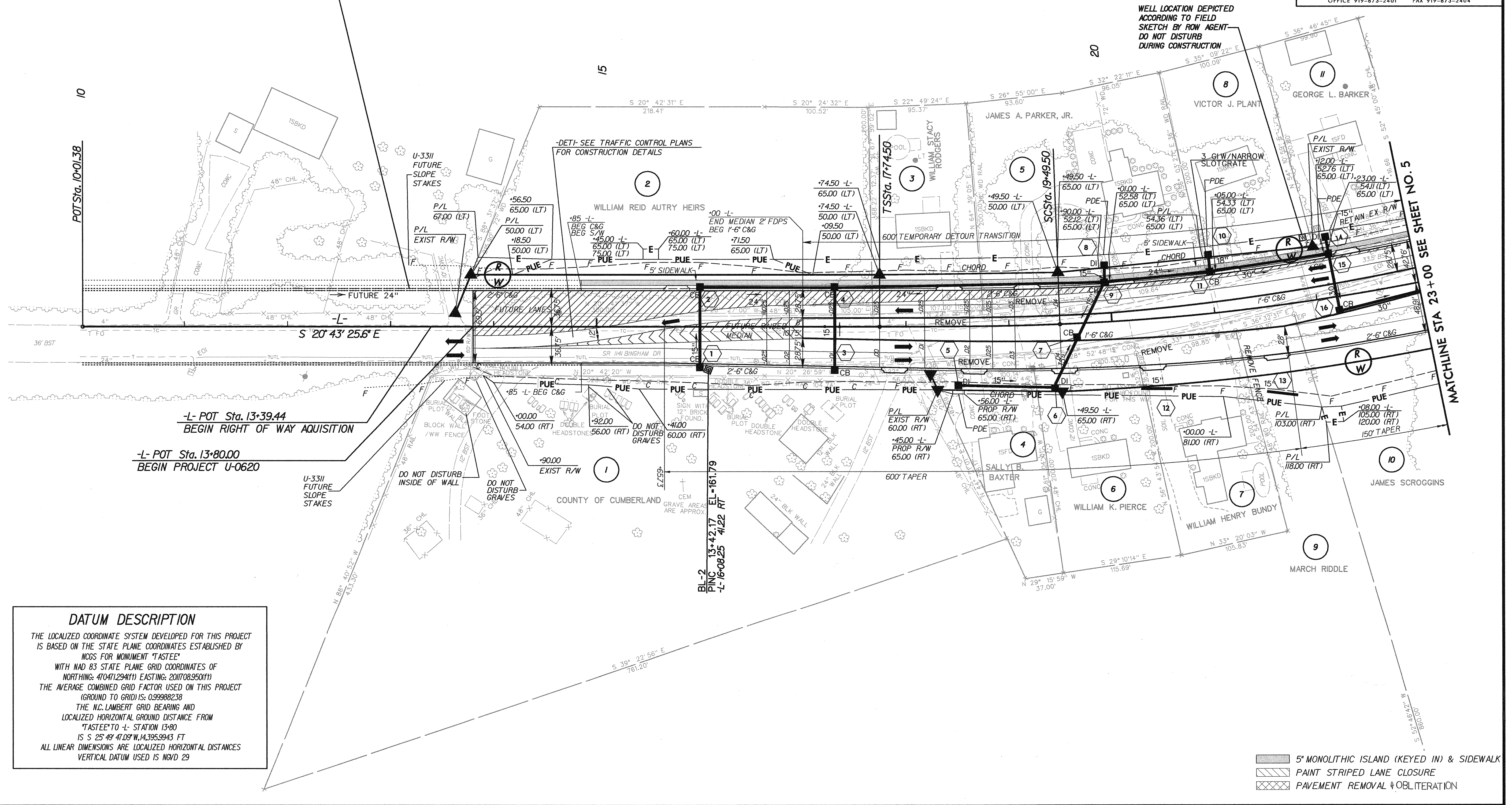
SEE SHEET 25 FOR -L- PROFILE
ALL DRIVEWAYS ARE 20' WIDE
UNLESS OTHERWISE NOTED
BREAK UP AND REMOVE EXISTING PAVEMENT
UNDERNEATH PROPOSED RAISED MEDIAN.

PROJECT REFERENCE NO. U-0620		SHEET NO. 4	
RW SHEET NO.			
ROADWAY DESIGN ENGINEER NORTH CAROLINA PROFESSIONAL ENGINEER DONALD HUBLEY 7/19/04		HYDRAULICS ENGINEER NORTH CAROLINA PROFESSIONAL ENGINEER SEAL 18442 RICHARD LEON HOLLAND, JR. 7-28-04	
Carter=Burgess Consultants in Planning, Engineering, Architecture, Construction Management and Related Services 5811 Glenwood Avenue, Suite 300 Raleigh, North Carolina 27612			
TRANSITE CONSULTING ENGINEERS, INCORPORATED ENGINEERS • PLANNERS • CEI 1300 Paddock Drive, Suite G-10 Raleigh, N.C. 27609 OFFICE 919-873-2401 FAX 919-873-2404			

-L-		
Pls Sta 18+91.7	PI Sta 2+46.76	Pls Sta 24+15.30
Os = 2' 11" 15.0"	Δ = 9' 50" 20.5" (LT)	Os = 1' 29" 59.8"
Ls = 175.00'	D = 2' 30" 00.0"	Os = 1' 52' 30.2"
LT = 116.68'	L = 393.56'	Ls = 150.00'
ST = 58.34'	T = 197.27'	LT = 77.80'
	R = 2,291.83'	ST = 72.24'
	SE = 0.040	
	INC = 43.75	



FUTURE PROJECT U-3311



DATUM DESCRIPTION

THE LOCALIZED COORDINATE SYSTEM DEVELOPED FOR THIS PROJECT IS BASED ON THE STATE PLANE COORDINATES ESTABLISHED BY MGS FOR MONUMENT "TASTEE" WITH NAD 83 STATE PLANE GRID COORDINATES OF (NORTHING: 470471294ft) (EASTING: 201708950ft). THE AVERAGE COMBINED GRID FACTOR USED ON THIS PROJECT (GROUND TO GRID) IS: 0.99988238. THE N.C. LAMBERT GRID BEARING AND LOCALIZED HORIZONTAL GROUND DISTANCE FROM "TASTEE" TO -L- STATION 13+80 IS S 25° 49' 47.09" W, 14,395.9943 FT. ALL LINEAR DIMENSIONS ARE LOCALIZED HORIZONTAL DISTANCES. VERTICAL DATUM USED IS NGVD 29.

- 5' MONOLITHIC ISLAND (KEYED IN) & SIDEWALK
- PAINT STRIPED LANE CLOSURE
- PAVEMENT REMOVAL & OBLITERATION