

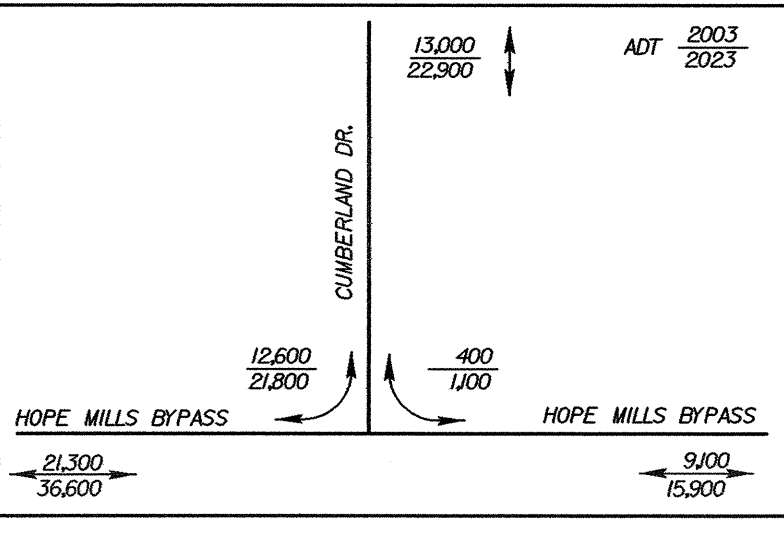
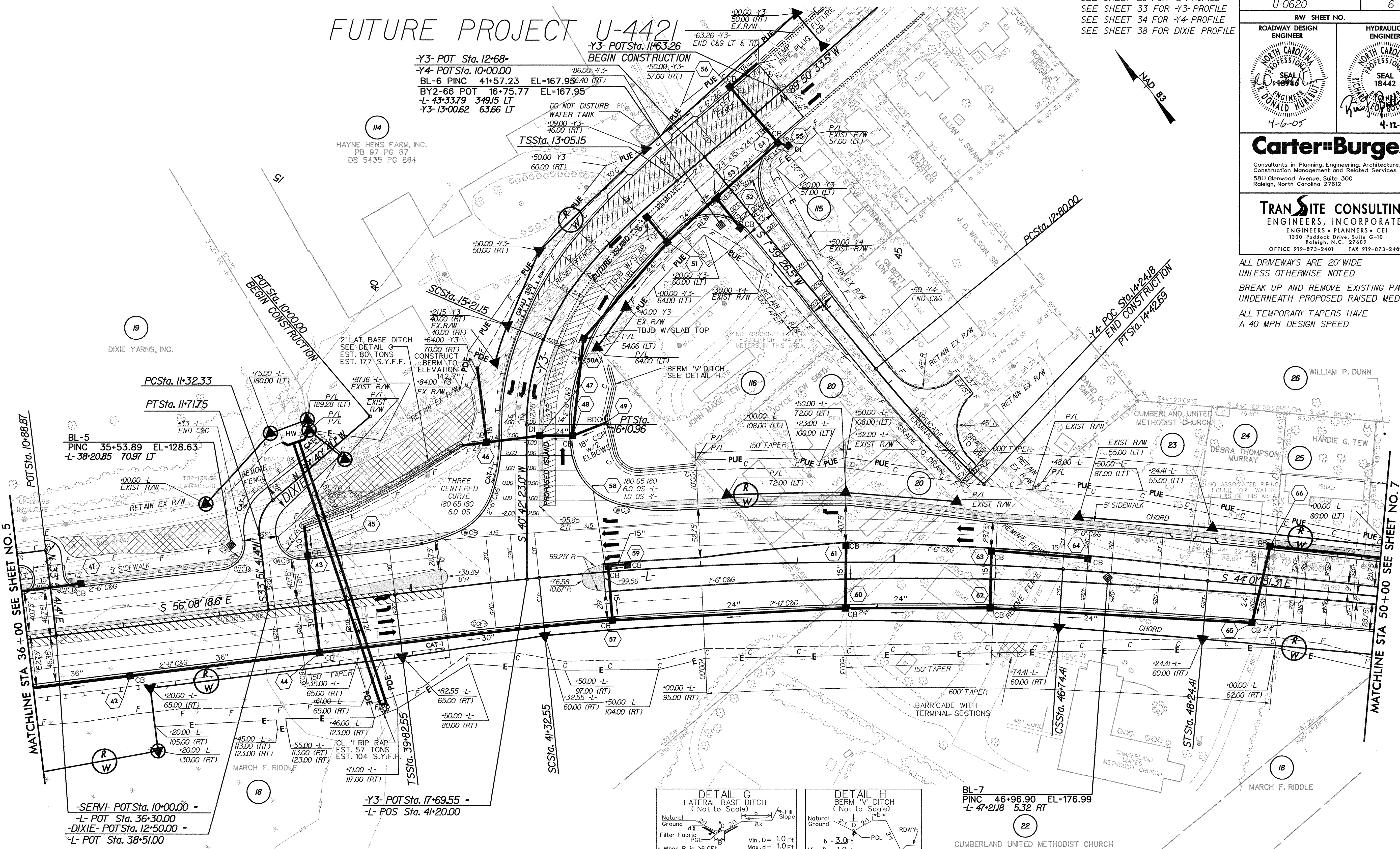
SEE SHEET 26 FOR -L- PROFILE
 SEE SHEET 33 FOR -Y3- PROFILE
 SEE SHEET 34 FOR -Y4- PROFILE
 SEE SHEET 38 FOR DIXIE PROFILE

| | |
|---|---|
| PROJECT REFERENCE NO. U-0620 | SHEET NO. 6 |
| RW SHEET NO. | |
| ROADWAY DESIGN ENGINEER NORTH CAROLINA PROFESSIONAL SEAL DONALD HULL 4-6-05 | HYDRAULICS ENGINEER NORTH CAROLINA PROFESSIONAL SEAL 18442 4-12-05 |
| Carter-Burgess Consultants in Planning, Engineering, Architecture, Construction Management and Related Services 5811 Glenwood Avenue, Suite 300 Raleigh, North Carolina 27612 | |
| TRANSITE CONSULTING ENGINEERS, INCORPORATED ENGINEERS & PLANNERS • CEI 1300 Paddock Drive, Suite G-10 Raleigh, N.C. 27609 OFFICE 919-873-2401 FAX 919-873-2404 | |

ALL DRIVEWAYS ARE 20' WIDE UNLESS OTHERWISE NOTED
 BREAK UP AND REMOVE EXISTING PAVEMENT UNDERNEATH PROPOSED RAISED MEDIAN.
 ALL TEMPORARY TAPERS HAVE A 40 MPH DESIGN SPEED

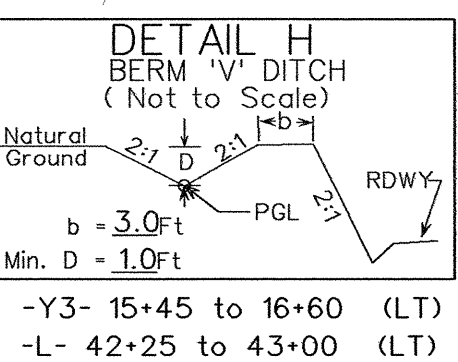
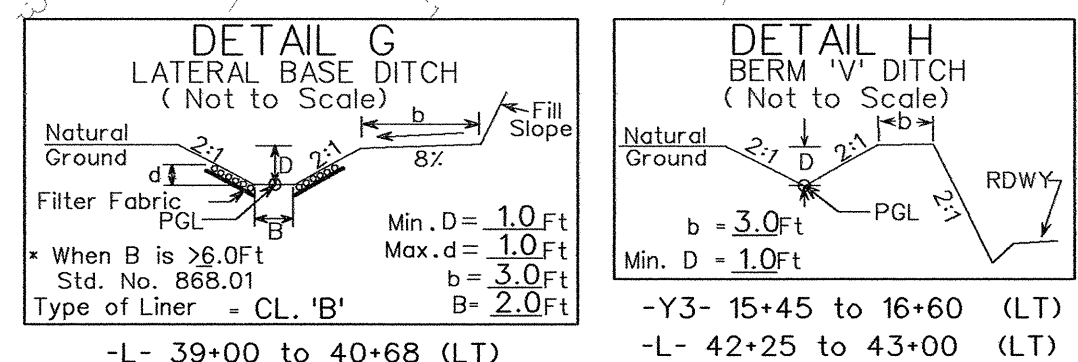
FUTURE PROJECT U-4421

-Y3- POT Sta. 12+68-
-Y4- POT Sta. 10+00.00
 BL-6 PINC 41+57.23 EL=167.956.40 (RT)
 BY2-66 POT 16+75.77 EL=167.95
 -L- 43+33.79 349.15 LT
 -Y3- 13+00.62 63.66 LT



-DIXIE-
 PI Sta 11+53.80
 $\Delta = 56' 27'' 38.4''$ (LT)
 $D = 143' 14'' 22.0''$
 $L = 39.42'$
 $T = 21.48'$
 $R = 40.00'$

| | | | |
|---|---|---|---|
| -Y3- POT Sta. 17+69.55 = -L- POS Sta. 41+20.00 | -L- PIs Sta 40+82.55 $\Delta = 9' 28'' 57.3''$ (RT) $D = 1' 45'' 00.0''$ $L = 100.00'$ $T = 50.00'$ | PIs Sta 44+04.10 $\Delta = 9' 28'' 57.3''$ (RT) $D = 1' 45'' 00.0''$ $L = 100.00'$ $T = 50.00'$ | PIs Sta 47+24.41 $\Delta = 9' 28'' 57.3''$ (RT) $D = 1' 45'' 00.0''$ $L = 100.00'$ $T = 50.00'$ |
|---|---|---|---|



BL-7
 PINC 46+96.90 EL=176.99
 -L- 47+21.18 5.32 RT

-Y4-
 PI Sta 13+61.48
 $\Delta = 8' 08'' 04.3''$ (LT)
 $D = 5' 00'' 00.0''$
 $L = 162.69'$
 $T = 81.48'$
 $R = 1,445.92'$
 $SE = 0.025$
 $INC = 18$

5' MONOLITHIC ISLAND (KEYED IN) & SIDEWALK
 PAINT STRIPED LANE CLOSURE
 PAVEMENT REMOVAL

7/2/09
 11:04:47 AM
 C:\Roadway\Proj\U0620_RDY_PSH_06.DGN
 04/26/2005