

7/12/99

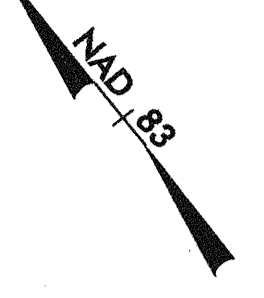
11:31:57 AM
C:\projects\0620\rdy_psh_08.dgn
7/17/2004

ALL DRIVEWAYS ARE 20' WIDE
UNLESS OTHERWISE NOTED
BREAK UP AND REMOVE EXISTING PAVEMENT
UNDERNEATH PROPOSED RAISED MEDIAN.

SEE SHEET 27 FOR -L- PROFILE
SEE SHEET 34 FOR -Y7- PROFILE
SEE SHEET 35 FOR -Y8- PROFILE
SEE SHEET 37 FOR -SERV2- PROFILE

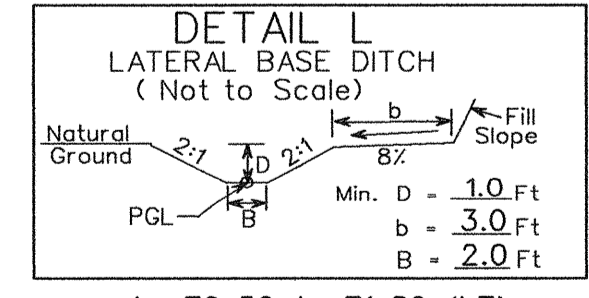
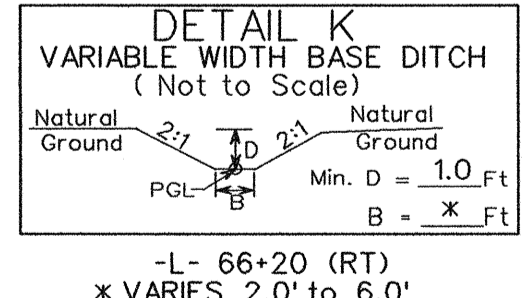
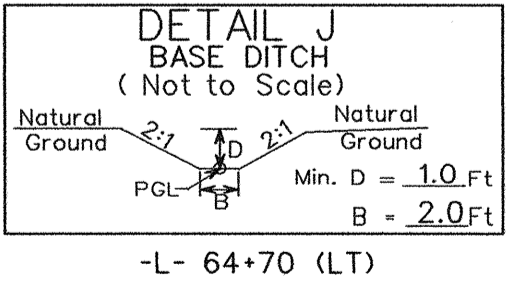
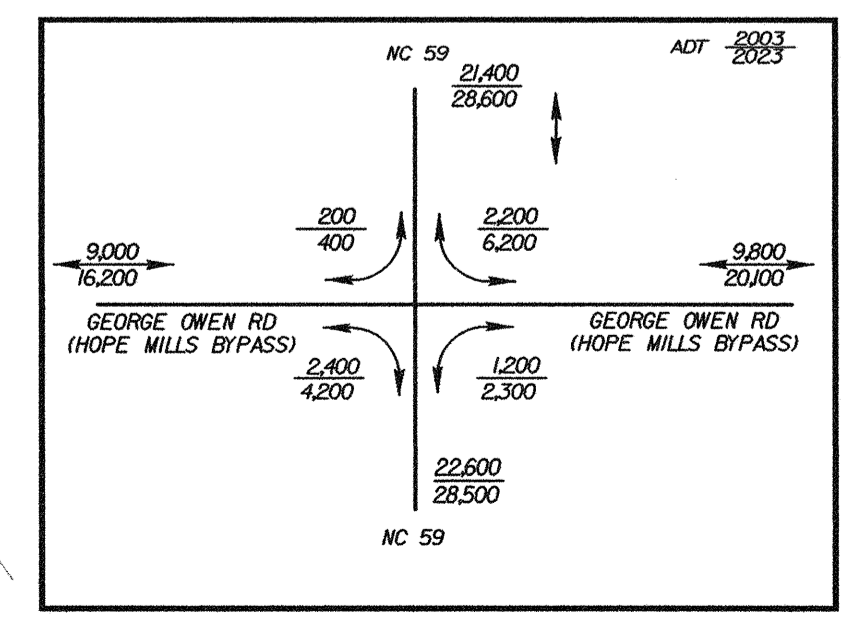
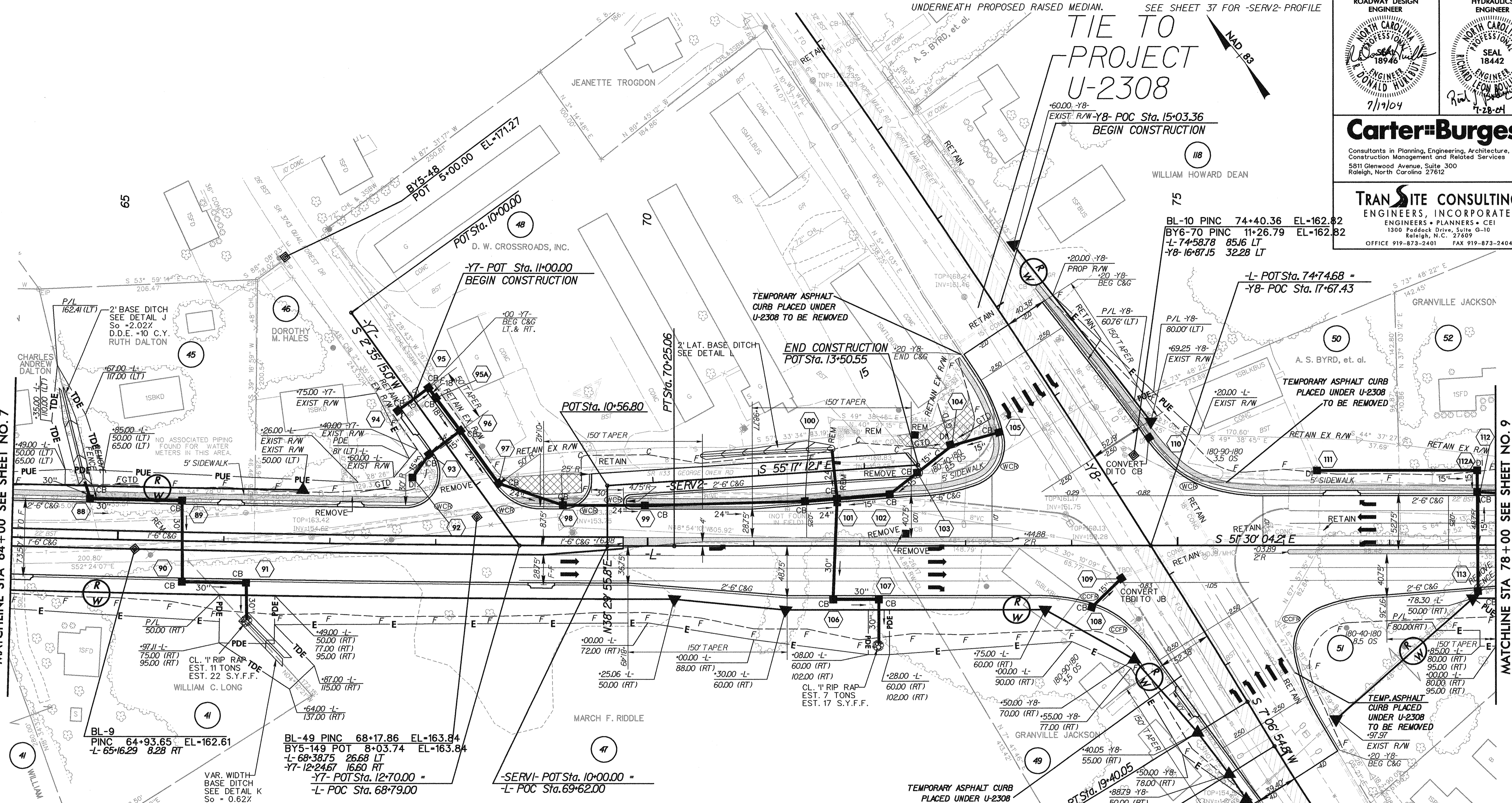
PROJECT REFERENCE NO. U-0620		SHEET NO. 8	
RW SHEET NO.			
ROADWAY DESIGN ENGINEER NORTH CAROLINA PROFESSIONAL SEAL 18946 DONALD HULETT 7/17/04		HYDRAULICS ENGINEER NORTH CAROLINA PROFESSIONAL SEAL 18442 RICHARD LEON BOLLINGER JR. 7-28-04	
CarterBurgess Consultants in Planning, Engineering, Architecture, Construction Management and Related Services 5811 Glenwood Avenue, Suite 300 Raleigh, North Carolina 27612			
TRANSITE CONSULTING ENGINEERS, INCORPORATED ENGINEERS • PLANNERS • CEI 1300 Piedmont Drive, Suite G-10 Raleigh, N.C. 27609 OFFICE 919-873-2401 FAX 919-873-2404			

TIE TO PROJECT U-2308



MATCHLINE STA 64+00 SEE SHEET NO. 7

MATCHLINE STA 78+00 SEE SHEET NO. 9



-L-
PI Sta 65+53.29
Δ = 2' 21" 32.9" (LT)
D = 0' 15" 00.0"
L = 943.66'
T = 471.90'
R = 22,918.31'
SE = NC = 0.025

-Y8-
PI Sta 14+70.29
Δ = 4' 42" 00.9" (RT)
D = 0' 30" 00.0"
L = 940.05'
T = 470.29'
R = 11,459.16'
SE = SEE PLANS

-Y8-
PI Sta 24+31.32
Δ = 23' 58" 58.5" (LT)
D = 2' 45" 00.0"
L = 872.11'
T = 442.53'
R = 2,083.48'
SE = SEE PLANS

TIE TO PROJECT U-2308

- 5' MONOLITHIC ISLAND (KEYED IN) & SIDEWALK
- PAINT STRIPED LANE CLOSURE
- PAVEMENT REMOVAL & OBLITERATION