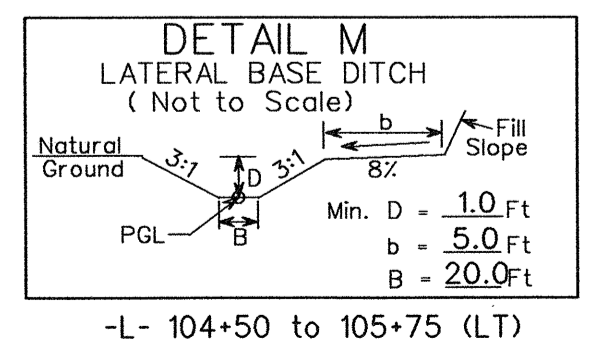
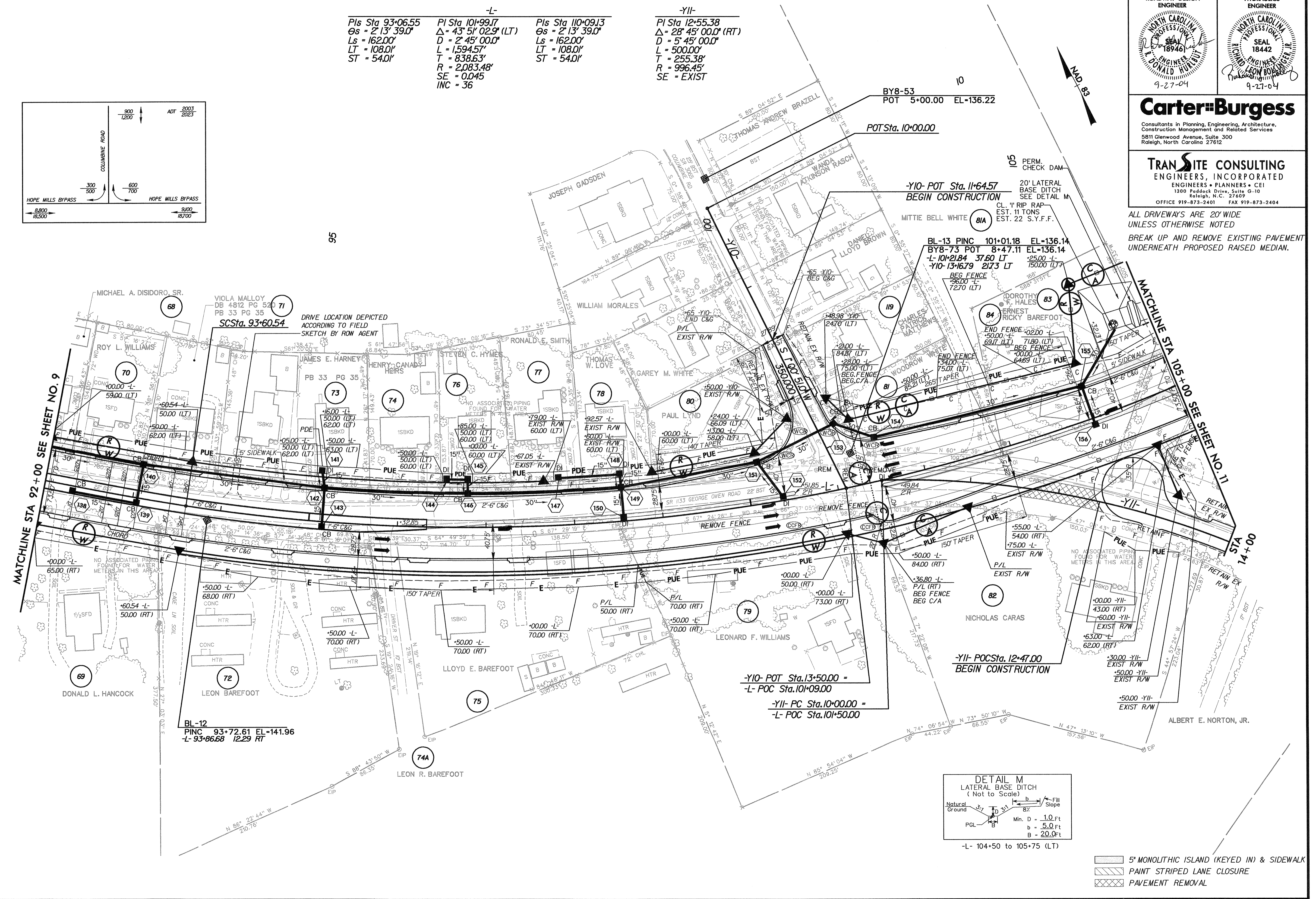
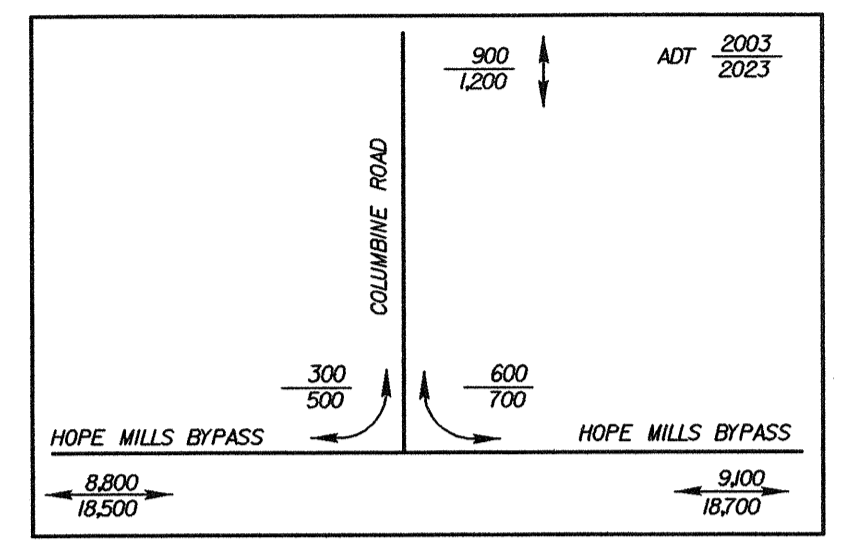


SEE SHEET 28 FOR -L- PROFILE  
SEE SHEET 35 FOR -YI0- PROFILE  
SEE SHEET 36 FOR -YII- PROFILE

PROJECT REFERENCE NO.		SHEET NO.	
U-0620		10	
RW SHEET NO.			
ROADWAY DESIGN ENGINEER		HYDRAULICS ENGINEER	
<b>Carter-Burgess</b> Consultants in Planning, Engineering, Architecture, Construction Management and Related Services 5811 Glenwood Avenue, Suite 300 Raleigh, North Carolina 27612			
<b>TRANSITE CONSULTING</b> ENGINEERS, INCORPORATED ENGINEERS • PLANNERS • CEI 1300 Paddock Drive, Suite G-10 Raleigh, N.C. 27609 OFFICE 919-873-2401 FAX 919-873-2404			

-L-	-YI0-	-YII-
PIs Sta 93+06.55	PI Sta 101+99.17	PIs Sta 110+09.13
Δs = 2' 13" 39.0"	Δ = 43' 51" 02.9" (LT)	Δ = 28' 45" 00.0" (RT)
Ls = 162.00'	D = 2' 45" 00.0"	D = 5' 45" 00.0"
LT = 108.01'	L = 1,594.57'	L = 500.00'
ST = 54.01'	T = 838.63'	T = 255.38'
	R = 2,083.48'	R = 996.45'
	SE = 0.045	SE = EXIST
	INC = 36	



- 5' MONOLITHIC ISLAND (KEYED IN) & SIDEWALK
- PAINT STRIPED LANE CLOSURE
- PAVEMENT REMOVAL

7/2/04  
 03:51:30 PM  
 C:\projects\p\proj\N06620\_RDY\_PSH\_10.DGN  
 05/27/2004