

SEE SHEET 32 FOR -L- PROFILE  
SEE SHEET 38 FOR -Y15- PROFILE

PROJECT REFERENCE NO. U-0620	SHEET NO. 18
RW SHEET NO.	

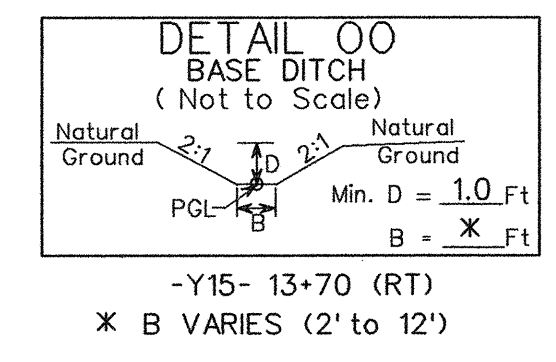
ROADWAY DESIGN ENGINEER NORTH CAROLINA PROFESSIONAL ENGINEER SEAL 18442 9/19/04	HYDRAULICS ENGINEER NORTH CAROLINA PROFESSIONAL ENGINEER SEAL 18442 1-23-04
--	--

**Carter-Burgess**  
Consultants in Planning, Engineering, Architecture, Construction Management and Related Services  
5511 Glenwood Avenue, Suite 300  
Raleigh, North Carolina 27612  
OFFICE 919-873-2401 FAX 919-873-2404

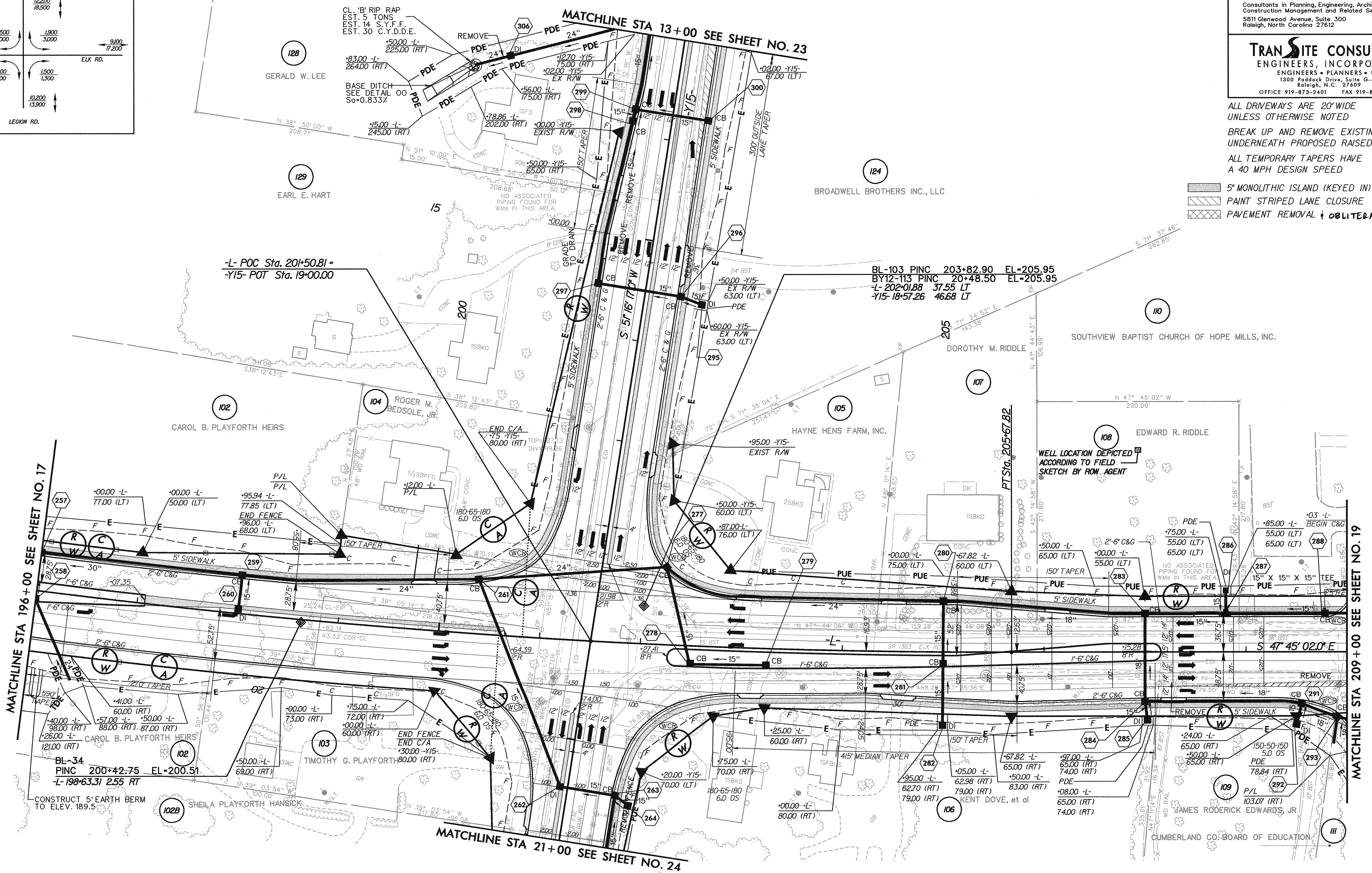
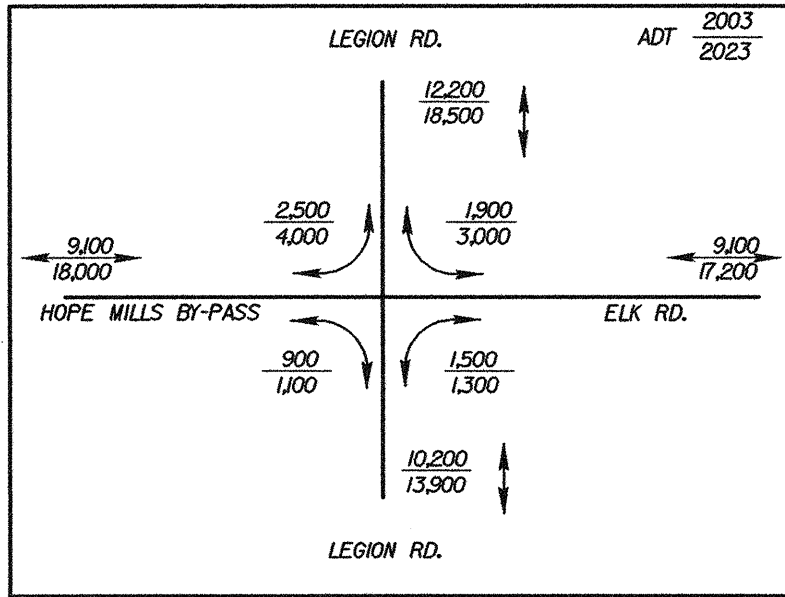
**TRANSITE CONSULTING**  
ENGINEERS, INCORPORATED  
ENGINEERS • PLANNERS • CEI  
1300 Reddock Drive, Suite G-10  
Raleigh, N.C. 27609  
OFFICE 919-873-2401 FAX 919-873-2404

ALL DRIVEWAYS ARE 20' WIDE UNLESS OTHERWISE NOTED  
BREAK UP AND REMOVE EXISTING PAVEMENT UNDERNEATH PROPOSED RAISED MEDIAN.  
ALL TEMPORARY TAPERS HAVE A 40 MPH DESIGN SPEED

- 5' MONOLITHIC ISLAND (KEYED IN) & SIDEWALK
- PAINT STRIPED LANE CLOSURE
- PAVEMENT REMOVAL & OBLITERATION



-L-  
PI Sta 198+78.96  
 $\Delta = 10^{\circ} 21' 40''$  (LT)  
 $D = 0^{\circ} 45' 00.0''$   
 $L = 1,381.49'$   
 $T = 692.63'$   
 $R = 7,639.44'$   
 $SE = 0.025$   
 $INC = 50$



7/12/05

11:32:19 AM  
c:\projects\0620\proj\0620\_rdy\_psh\_18.dgn  
07/17/2004