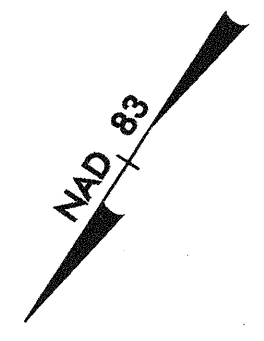
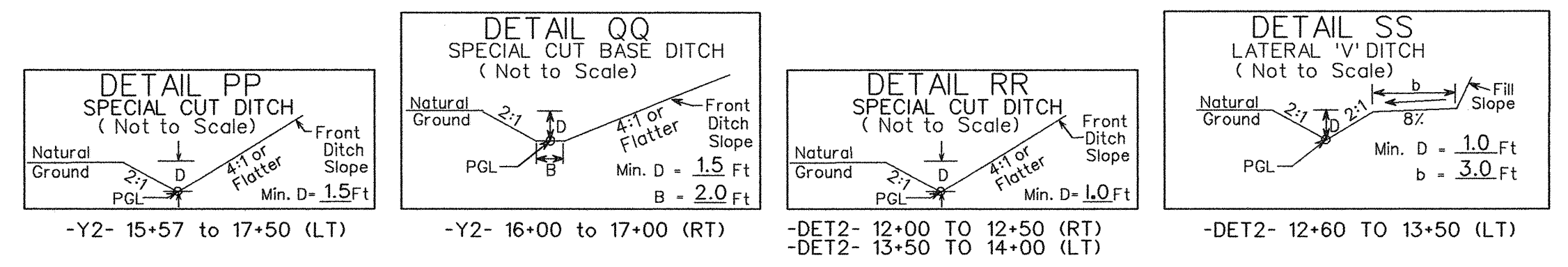
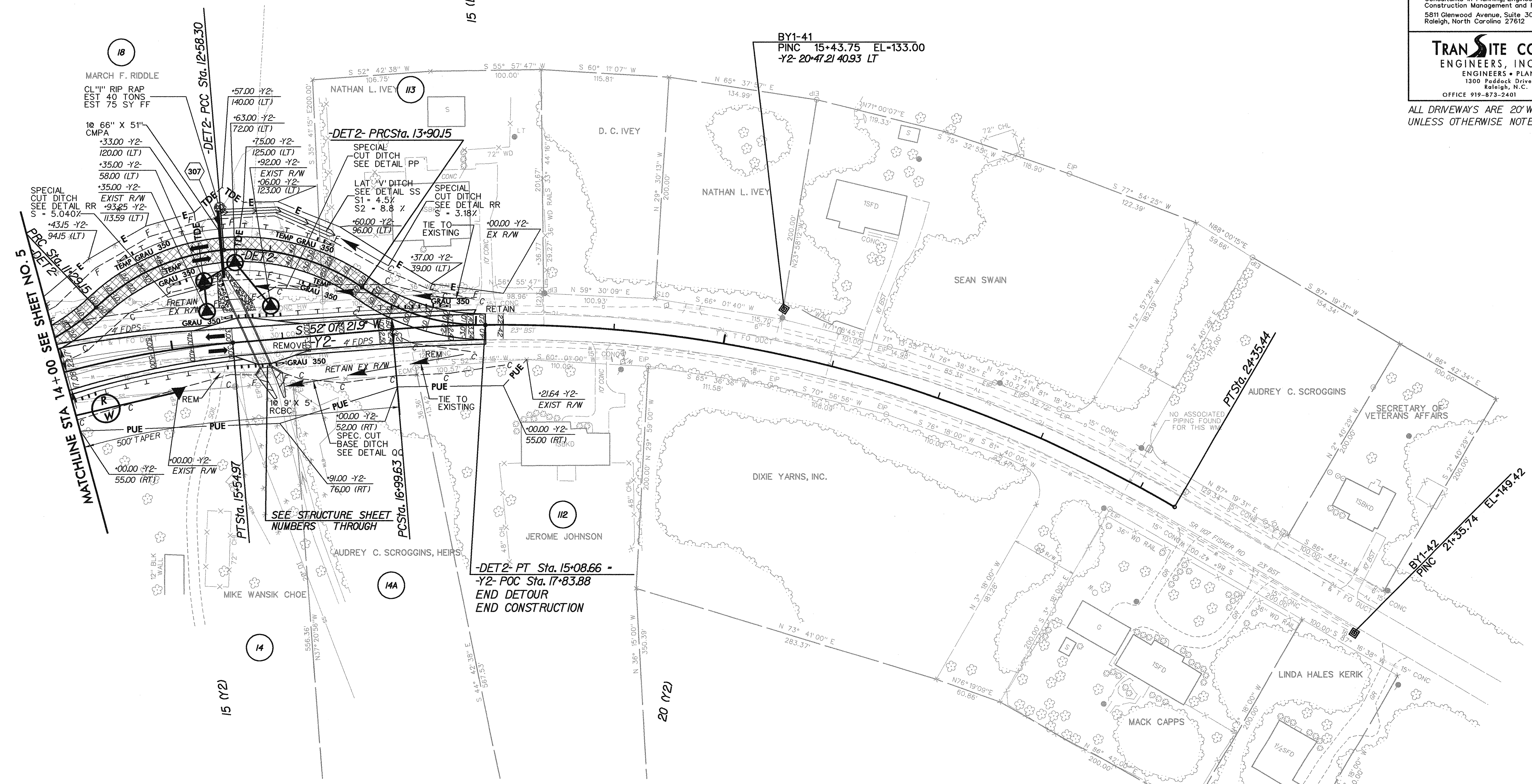


SEE SHEET 33 FOR -Y2-PROFILE
SEE SHEET 33 FOR -DET2-PROFILE

PROJECT REFERENCE NO. U-0620		SHEET NO. 20	
RAW SHEET NO.			
ROADWAY DESIGN ENGINEER NORTH CAROLINA PROFESSIONAL ENGINEER DONALD HIRSH 7/1/04		HYDRAULICS ENGINEER NORTH CAROLINA PROFESSIONAL ENGINEER SEAL 18442 RICHARD S. BOWEN 7-23-04	
Carter-Burgess Consultants in Planning, Engineering, Architecture, Construction Management and Related Services 5811 Glenwood Avenue, Suite 300 Raleigh, North Carolina 27612			
TRANSITE CONSULTING ENGINEERS, INCORPORATED ENGINEERS • PLANNERS • CEI 1300 Paddock Drive, Suite G-10 Raleigh, N.C. 27609 OFFICE 919-873-2401 FAX 919-873-2404			
ALL DRIVEWAYS ARE 20' WIDE UNLESS OTHERWISE NOTED			



-DET2-		-Y2-		-Y2-	
PI Sta 10+67.15	PI Sta 11+96.31	PI Sta 13+26.98	PI Sta 14+51.39	PI Sta 14+39.83	PI Sta 20+79.38
$\Delta = 38^{\circ} 44' 44.0''$ (LT)	$\Delta = 38^{\circ} 44' 44.0''$ (RT)	$\Delta = 39^{\circ} 33' 18.1''$ (RT)	$\Delta = 35^{\circ} 33' 10.6''$ (LT)	$\Delta = 15^{\circ} 38' 28.9''$ (RT)	$\Delta = 34^{\circ} 57' 03.8''$ (RT)
D = 30' 00" 00.0"	D = 30' 00" 00.0"	D = 30' 00" 00.0"	D = 30' 00" 00.0"	D = 6' 45" 00.0"	D = 4' 45" 00.0"
L = 129.15'	L = 129.15'	L = 131.85'	L = 118.51'	L = 231.72'	L = 735.81'
T = 67.15'	T = 67.15'	T = 68.67'	T = 61.23'	T = 116.59'	T = 379.76'
R = 190.99'	R = 190.99'	R = 190.99'	R = 190.99'	R = 848.83'	R = 1,206.23'
SE = SEE PLANS	SE = SEE PLANS	SE = SEE PLANS	SE = SEE PLANS	SE = 0.050	SE = EXIST
				INC = 36	



- 5' MONOLITHIC ISLAND (KEYED IN) & SIDEWALK
- PAINT STRIPED LANE CLOSURE
- PAVEMENT REMOVAL & OBLITERATION

7/2/99

11:32:22 AM pro\U0620_rdy.psh_20.dgn
07/17/2004