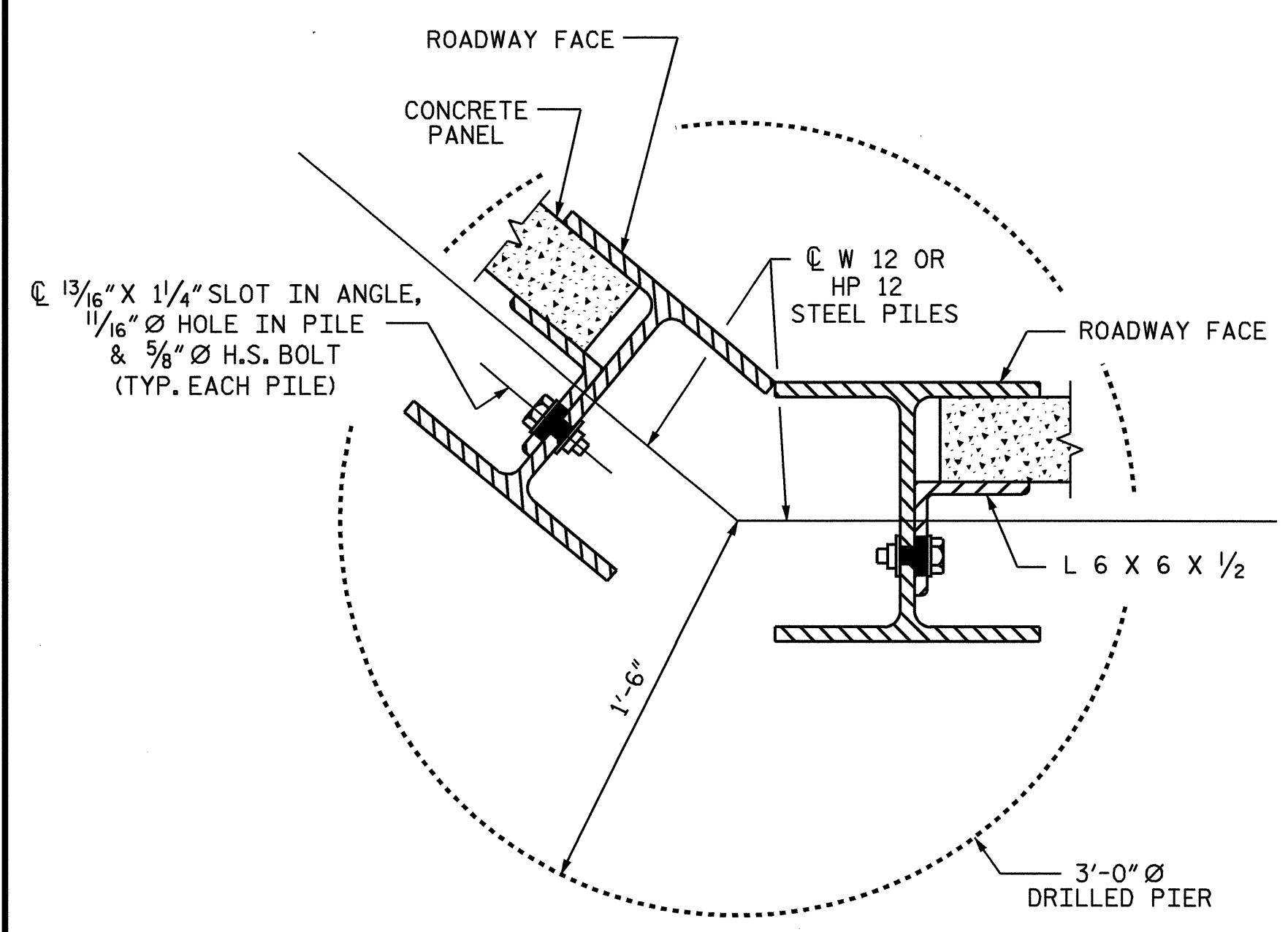
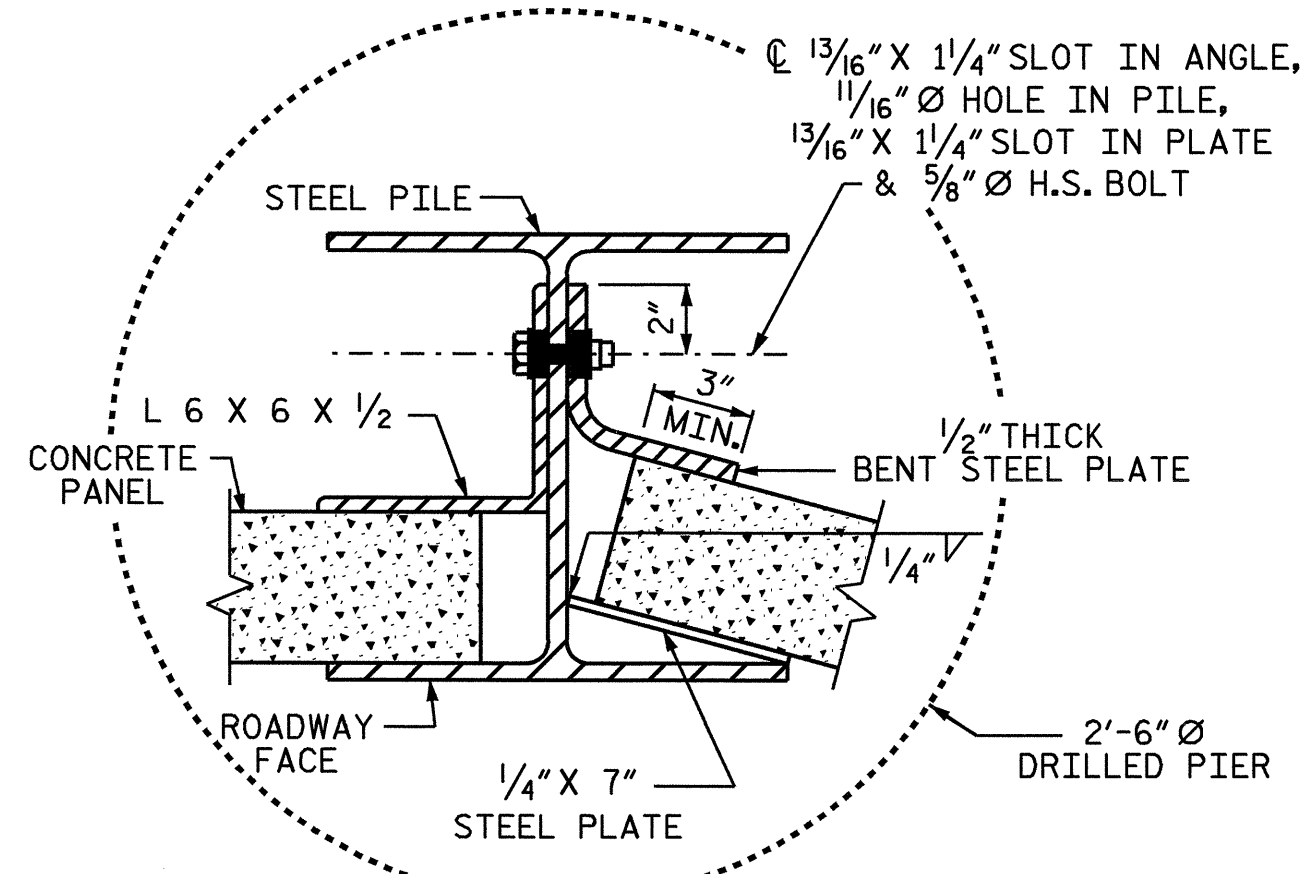


BILL OF MATERIAL	
SOUND BARRIER WALL	S.F. 4000.0
QUANTITIES PROVIDED ARE APPROXIMATE AND ARE FOR BID PURPOSES ONLY.	



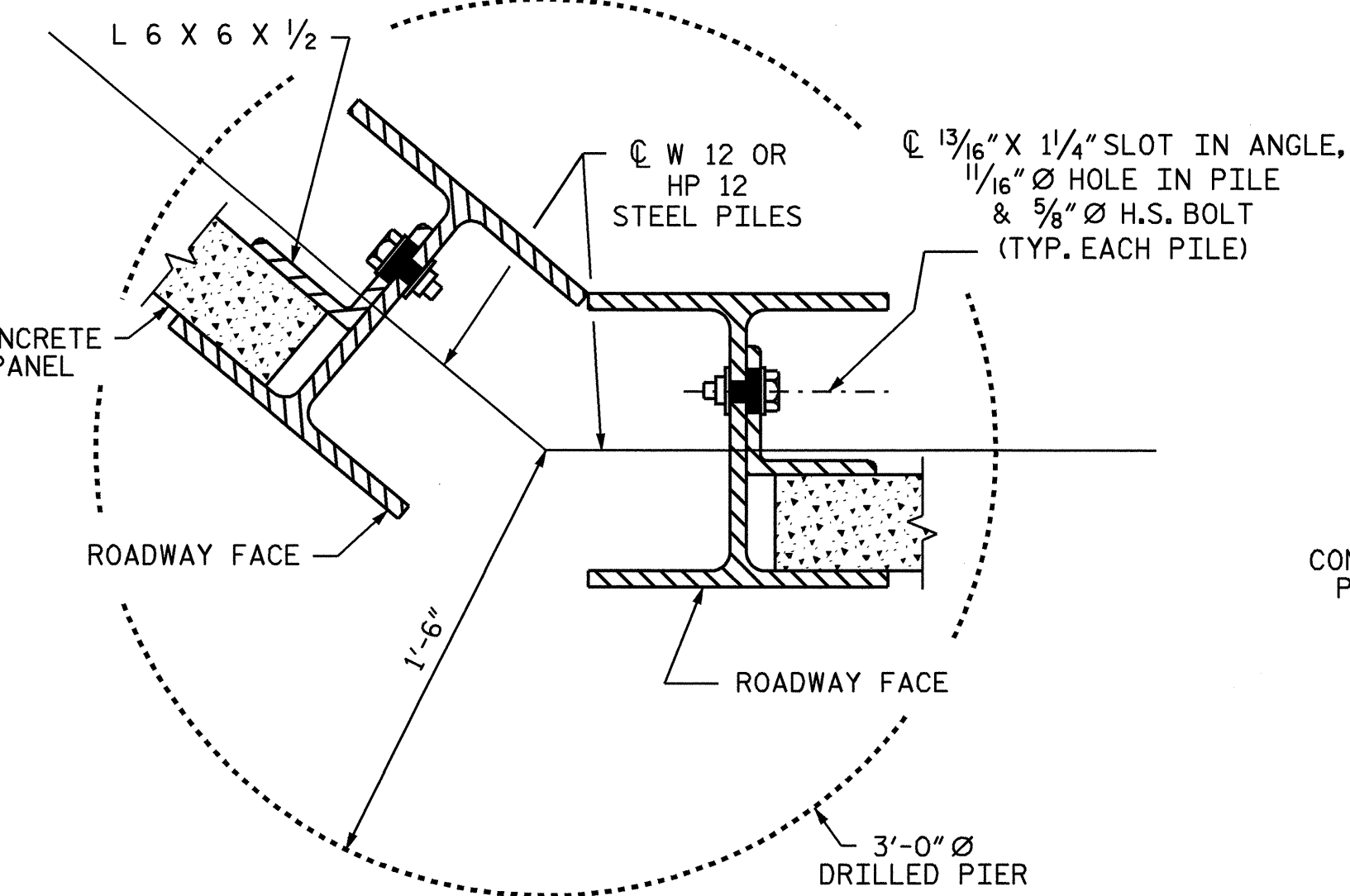
TYPICAL WALL TURN DETAIL

(FOR GREATER THAN 15° TURNS, CONCAVE TOWARD ROADWAY)



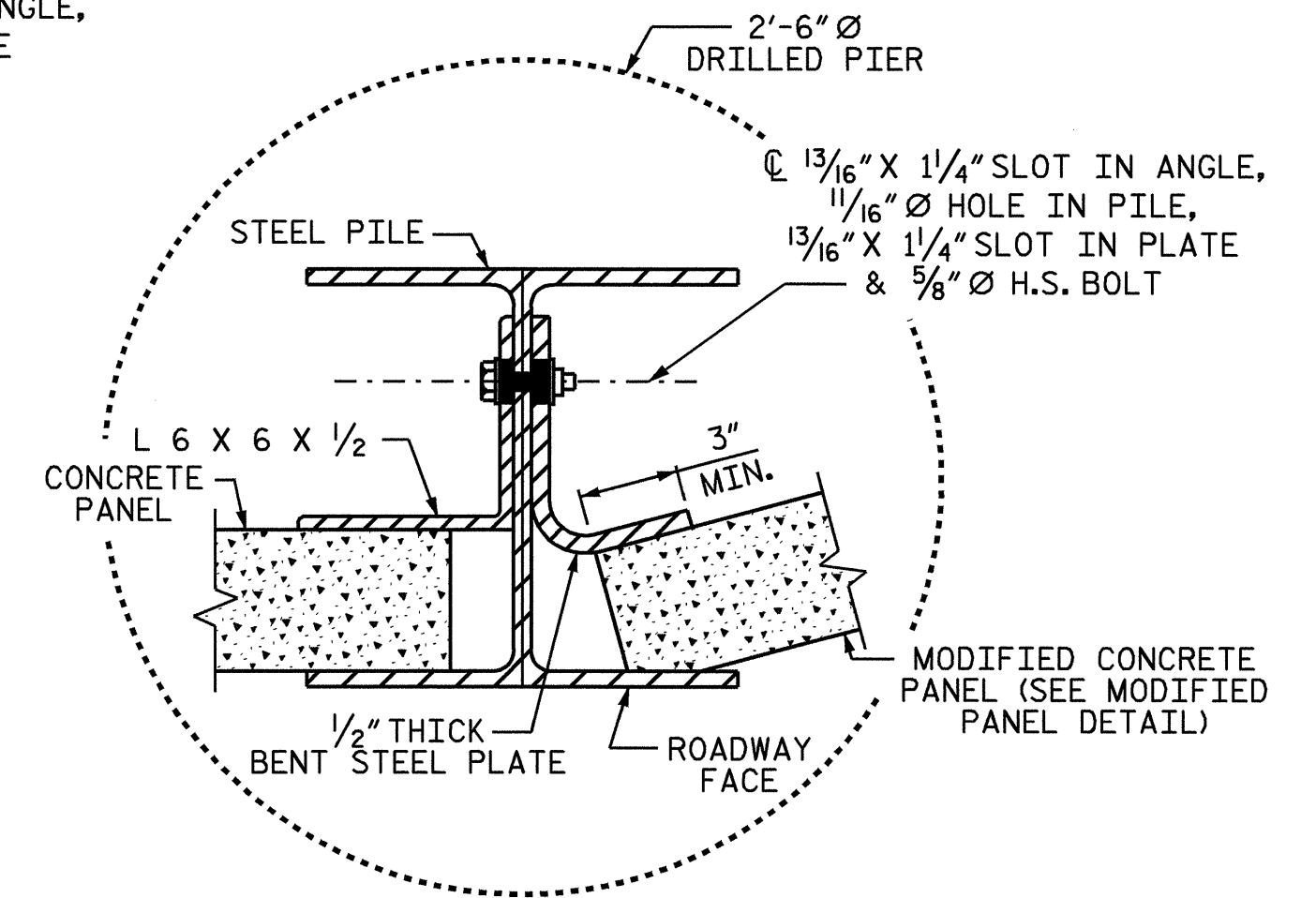
TYPICAL WALL TURN DETAIL

(USE ONLY FOR TURNS 15° OR LESS, CONCAVE TOWARD ROADWAY)



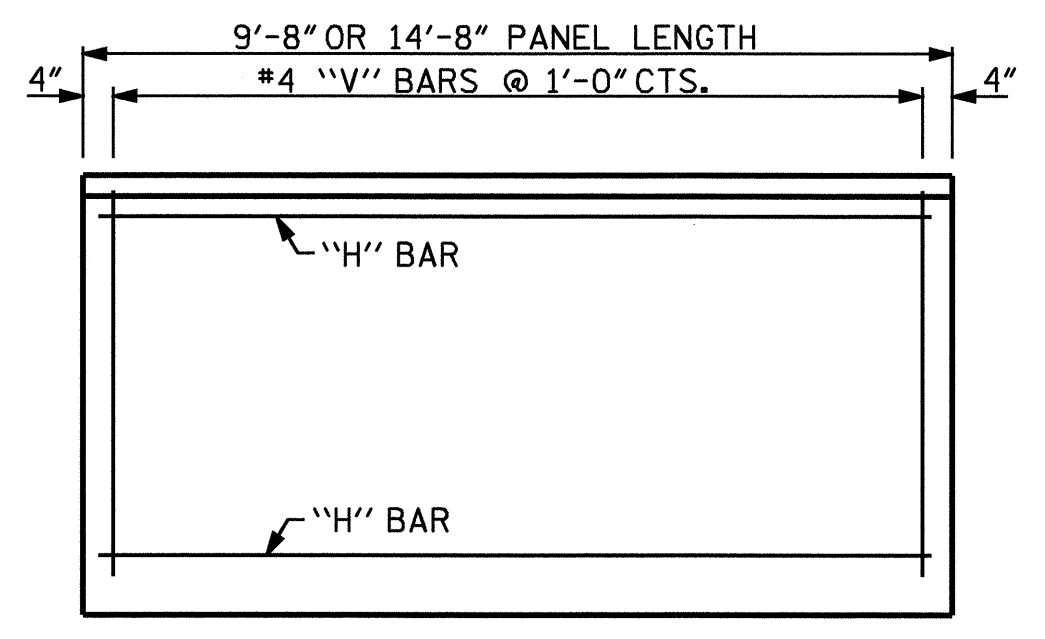
TYPICAL WALL TURN DETAIL

(FOR GREATER THAN 15° TURNS, CONVEX TOWARD ROADWAY)

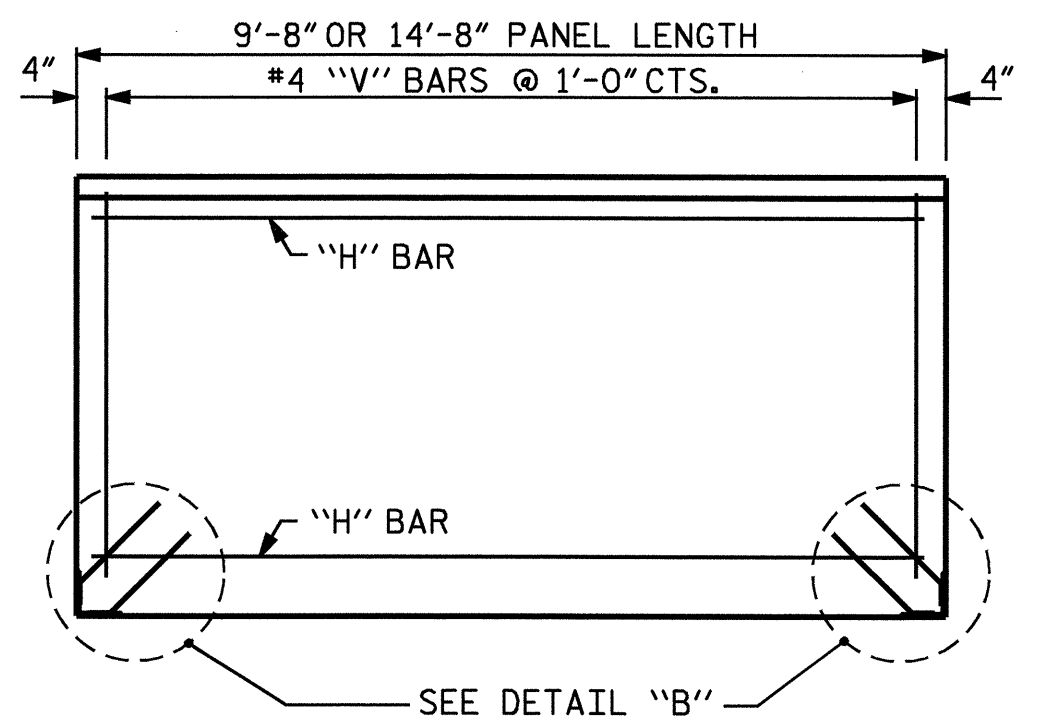


TYPICAL WALL TURN DETAIL

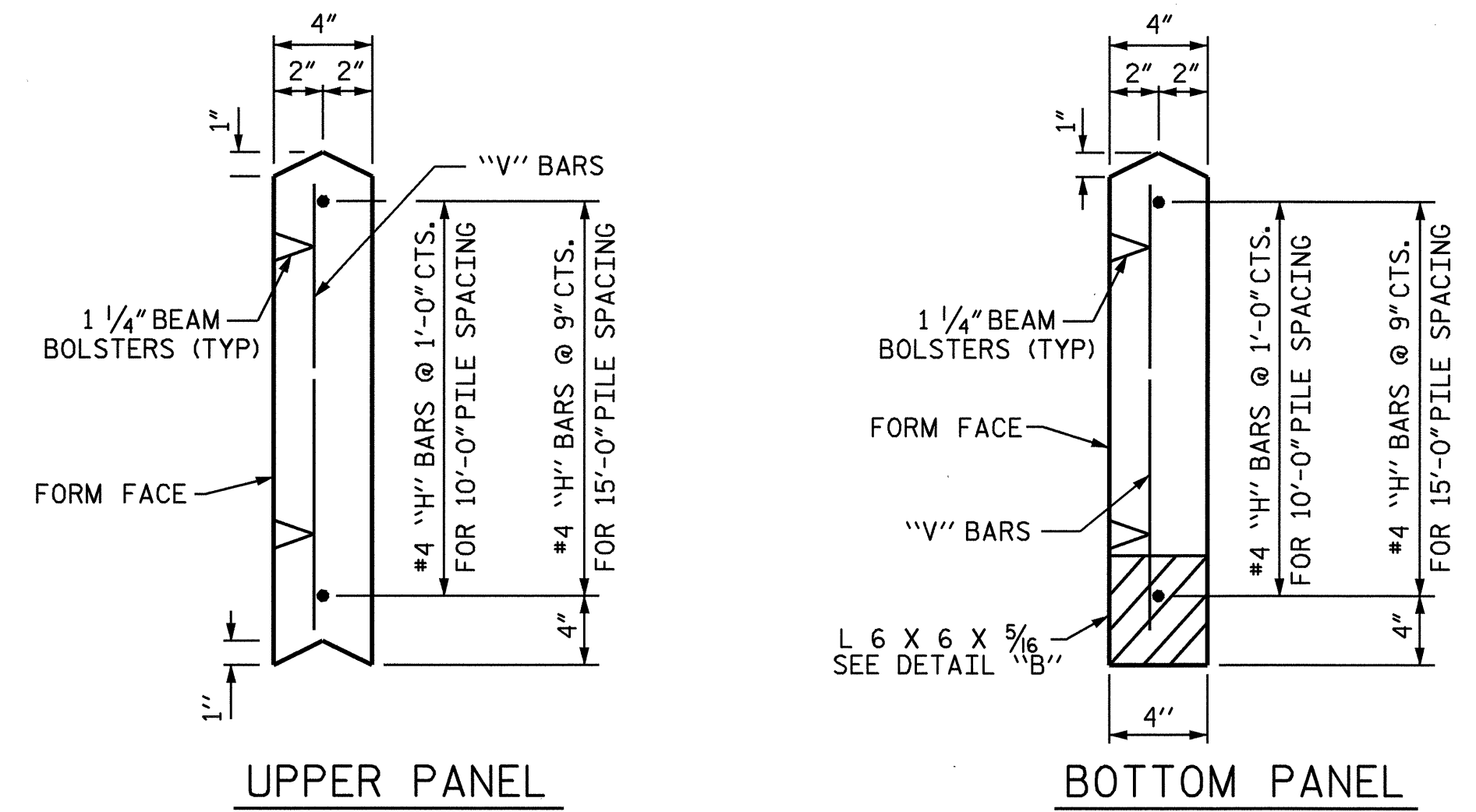
(USE ONLY FOR TURNS 15° OR LESS, CONVEX TOWARD ROADWAY)



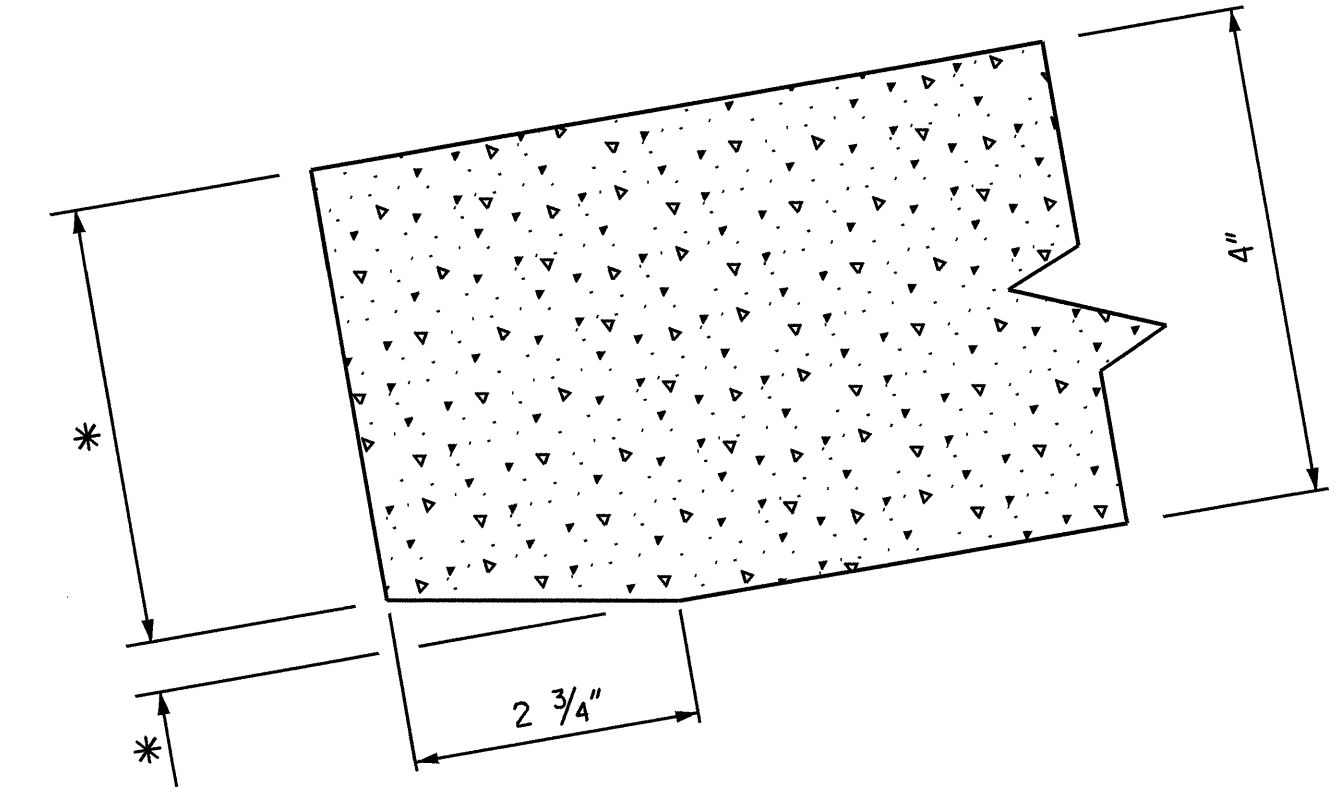
FRONT ELEVATION OF UPPER PRECAST PANELS



FRONT ELEVATION OF BOTTOM PRECAST PANEL

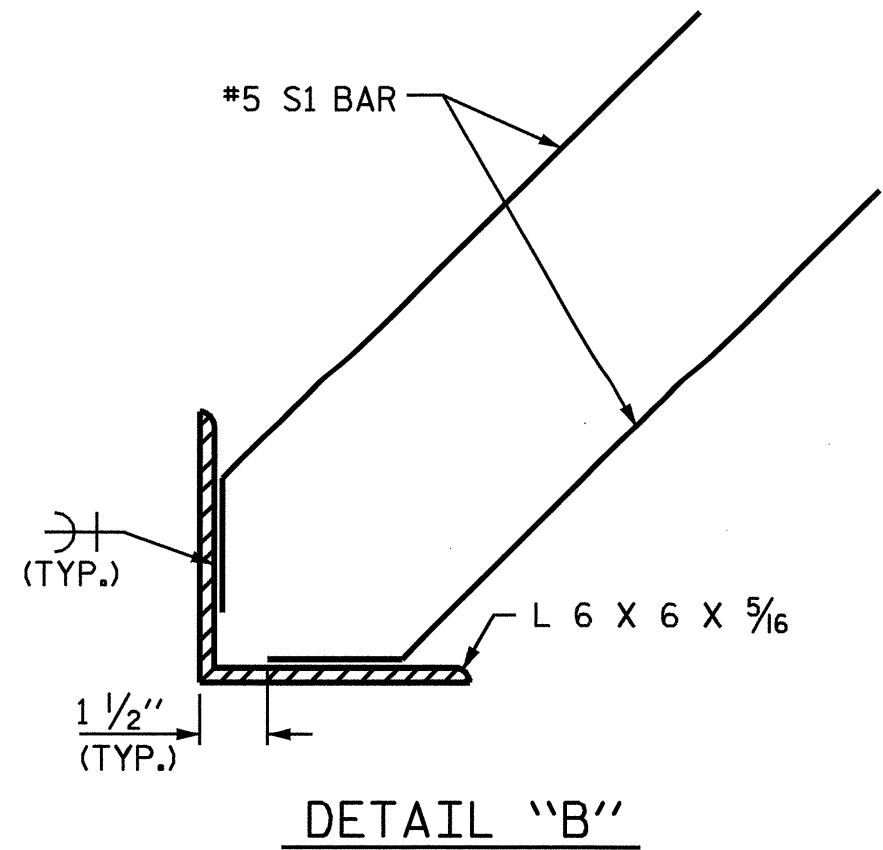


SECTION THROUGH PRECAST PANELS



MODIFIED PANEL DETAIL

(USE ONLY FOR TURNS 15° OR LESS, CONVEX TOWARD ROADWAY)
* DIMENSIONS TO BE DETERMINED BY THE CONTRACTOR.



ADDITIONAL BARS FOR ONE BOTTOM PANEL

NO.	BAR	SIZE	TYPE	LENGTH	WEIGHT (lb)
4	S1	#5	1	1'-6"	6

BAR TYPE

QUANTITIES FOR ONE PRECAST PANEL (FOR 10'-0" PILE SPACING)

PANEL HEIGHT	CLASS AA CONCRETE	BAR TYPES											
		HORIZONTAL						VERTICAL					
C.Y.	NO.	BAR	SIZE	TYPE	LENGTH	WEIGHT (lb)	NO.	BAR	SIZE	TYPE	LENGTH	WEIGHT (lb)	
2'-0"	0.24	3	H1	#4	STR	9'-4"	19	10	V1	#4	STR	1'-8"	11
3'-0"	0.36	4	H2	#4	STR	9'-4"	25	10	V2	#4	STR	2'-8"	18
4'-0"	0.48	5	H3	#4	STR	9'-4"	31	10	V3	#4	STR	3'-8"	24

QUANTITIES FOR ONE PRECAST PANEL (FOR 15'-0" PILE SPACING)

PANEL HEIGHT	CLASS AA CONCRETE	BAR TYPES											
		HORIZONTAL						VERTICAL					
C.Y.	NO.	BAR	SIZE	TYPE	LENGTH	WEIGHT (lb)	NO.	BAR	SIZE	TYPE	LENGTH	WEIGHT (lb)	
3'-0"	0.54	4	H1	#4	STR	14'-4"	38	15	V1	#4	STR	2'-8"	27
4'-0"	0.72	5	H2	#4	STR	14'-4"	48	15	V2	#4	STR	3'-8"	37
5'-0"	0.91	6	H3	#4	STR	14'-4"	57	15	V3	#4	STR	4'-8"	47
6'-0"	1.09	8	H4	#4	STR	14'-4"	77	15	V4	#4	STR	5'-8"	57

PROJECT NO. U-0620
CUMBERLAND COUNTY
 STATION: 183+00.00 -L-

SHEET 2 OF 2

STATE OF NORTH CAROLINA
 DEPARTMENT OF TRANSPORTATION
 RALEIGH

STANDARD SOUND BARRIER WALL DETAILS

REVISIONS						SHEET NO.
NO.	BY:	DATE:	NO.	BY:	DATE:	
1			3			2-Y TOTAL SHEETS
2			4			

ASSEMBLED BY : M. G. SHAIKH DATE : 03-24-03
 CHECKED BY : B. D. KLAPPENBACH DATE : 12-10-03
 DRAWN BY : JAD 5/01
 CHECKED BY : RDR 5/01
 ADDED: 5/14/01
 REV. 7/10/01
 REV. 2/4/03
 RWW/LES
 RWW/CVC

