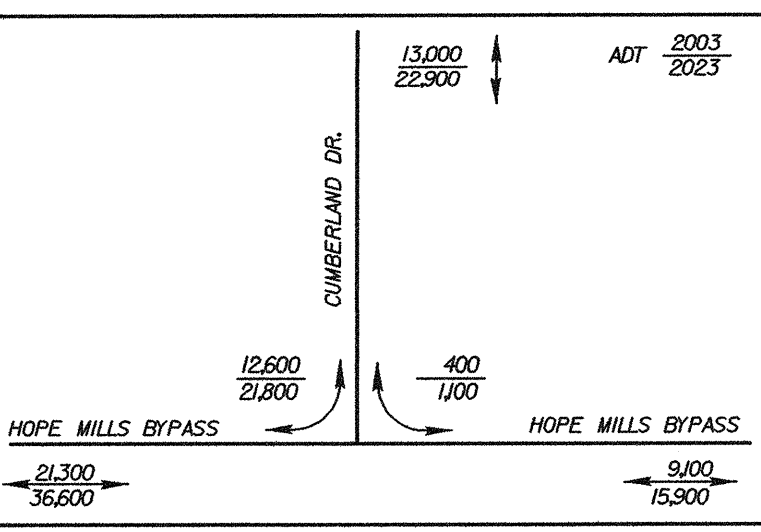
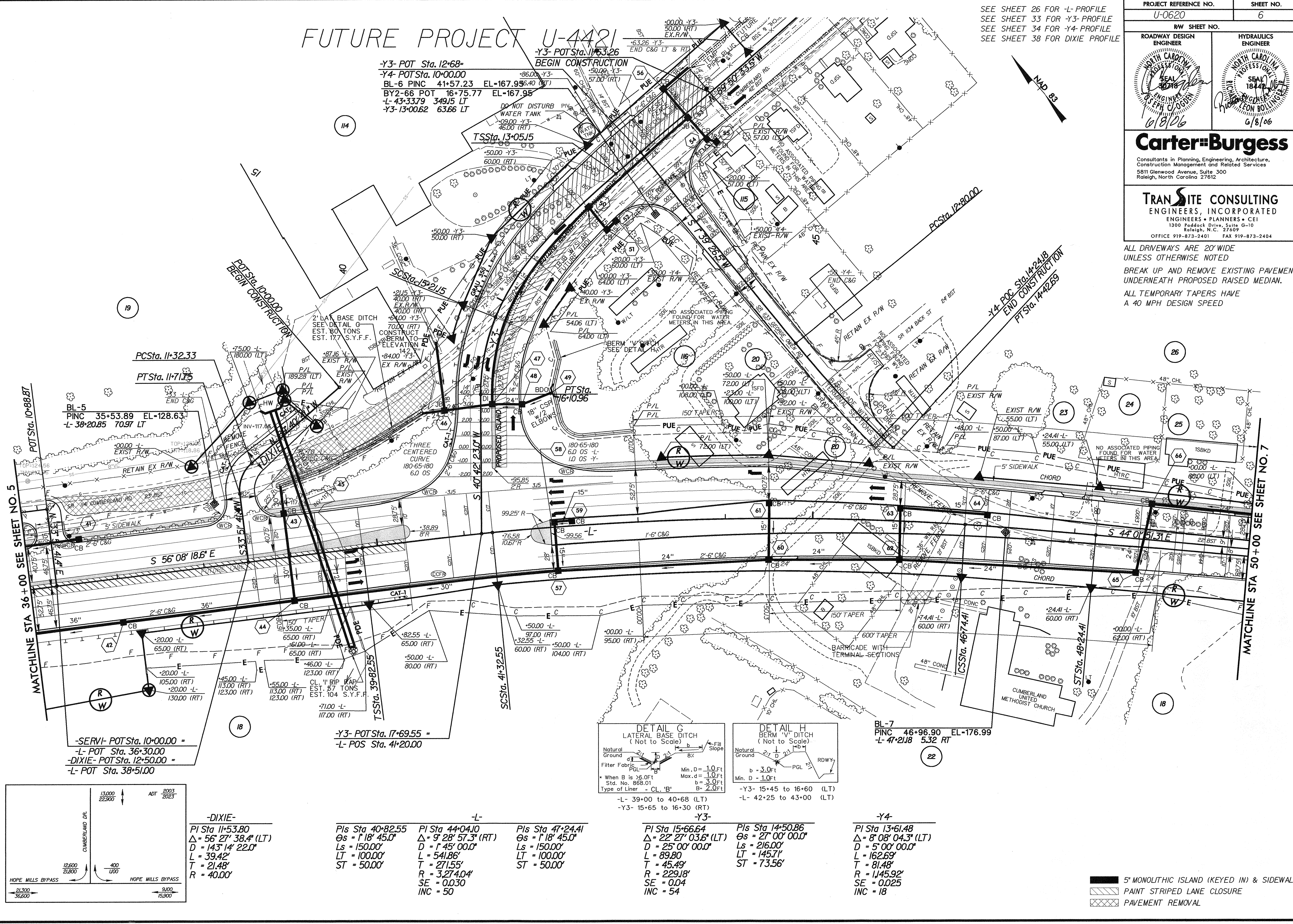


SEE SHEET 26 FOR -L-PROFILE  
 SEE SHEET 33 FOR -Y3-PROFILE  
 SEE SHEET 34 FOR -Y4-PROFILE  
 SEE SHEET 38 FOR DIXIE PROFILE

PROJECT REFERENCE NO. U-0620	SHEET NO. 6
RW SHEET NO.	
ROADWAY DESIGN ENGINEER 	HYDRAULICS ENGINEER 
<b>Carter-Burgess</b> Consultants in Planning, Engineering, Architecture, Construction Management and Related Services 5811 Glenwood Avenue, Suite 300 Raleigh, North Carolina 27612	
<b>TRANSITE CONSULTING ENGINEERS, INCORPORATED</b> ENGINEERS • PLANNERS • CEI 1300 Paddock Drive, Suite G-10 Raleigh, N.C. 27609 OFFICE 919-873-2401 FAX 919-873-2404	

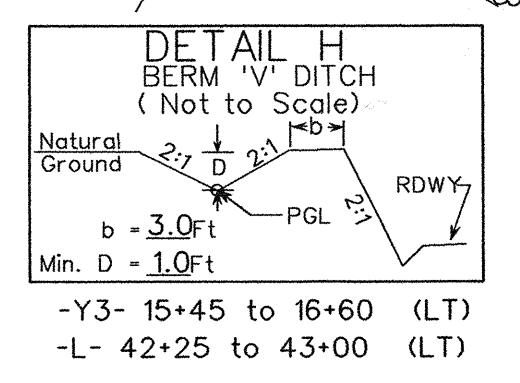
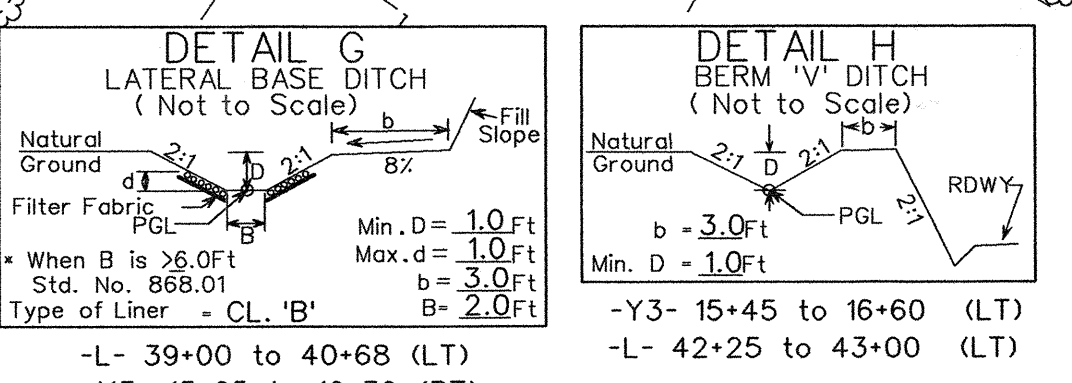
ALL DRIVEWAYS ARE 20' WIDE UNLESS OTHERWISE NOTED  
 BREAK UP AND REMOVE EXISTING PAVEMENT UNDERNEATH PROPOSED RAISED MEDIAN.  
 ALL TEMPORARY TAPERS HAVE A 40 MPH DESIGN SPEED

# FUTURE PROJECT U-4421



**-DIXIE-**  
 PI Sta 11+53.80  
 $\Delta = 56' 27'' 38.4''$  (LT)  
 $D = 143' 14'' 22.0''$   
 $L = 39.42'$   
 $T = 21.48'$   
 $R = 40.00'$

PIs Sta 40+82.55 $\Theta s = 1' 18'' 45.0''$ $Ls = 150.00'$ $LT = 100.00'$ $ST = 50.00'$	PI Sta 44+04.10 $\Delta = 9' 28'' 57.3''$ (RT) $D = 1' 45'' 00.0''$ $L = 541.86'$ $T = 271.55'$ $R = 3,274.04'$ $SE = 0.030$ $INC = 50$	PIs Sta 47+24.41 $\Theta s = 1' 18'' 45.0''$ $Ls = 150.00'$ $LT = 100.00'$ $ST = 50.00'$
--	--	--



BL-7  
 PINC 46+96.90 EL-176.99  
 -L- 47+218 532 RT

PI Sta 15+66.64 $\Delta = 22' 27'' 03.6''$ (LT) $D = 25' 00'' 00.0''$ $L = 89.80$ $T = 45.49'$ $R = 229.18'$ $SE = 0.04$ $INC = 54$	PIs Sta 14+50.86 $\Theta s = 27' 00'' 00.0''$ $Ls = 216.00'$ $LT = 145.71'$ $ST = 73.56'$	PI Sta 13+61.48 $\Delta = 8' 08'' 04.3''$ (LT) $D = 5' 00'' 00.0''$ $L = 162.69'$ $T = 81.48'$ $R = 1,145.92'$ $SE = 0.025$ $INC = 18$
--	---	---

5' MONOLITHIC ISLAND (KEYED IN) & SIDEWALK  
 PAINT STRIPED LANE CLOSURE  
 PAVEMENT REMOVAL

7/12/99  
 6/7/2006  
 5:38:34 PM  
 P:\proj\U0620\_RDY\_PSH\_06.DGN