

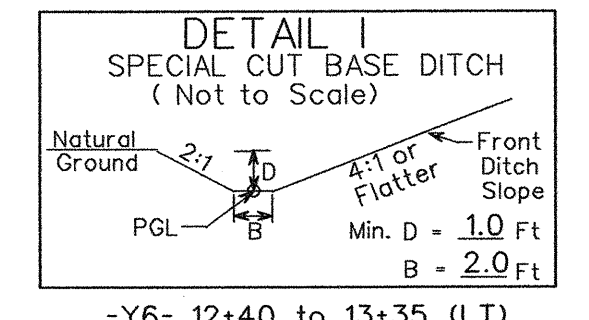
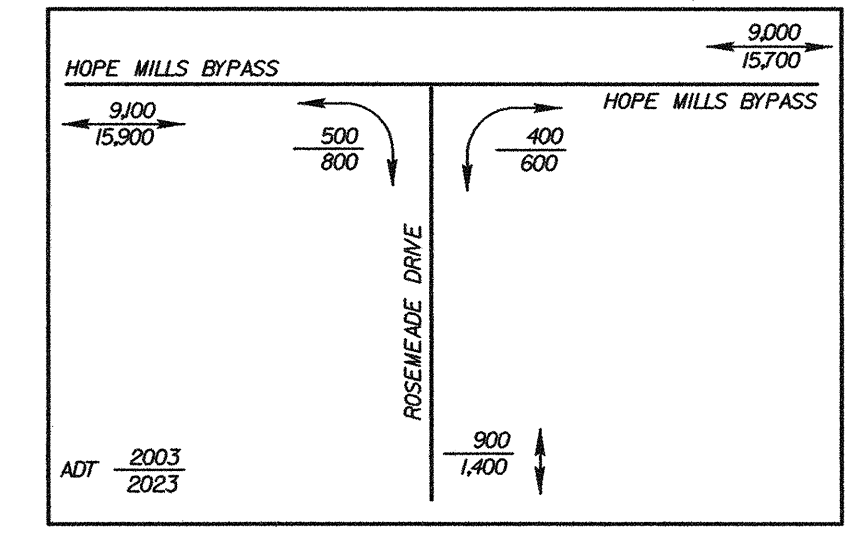
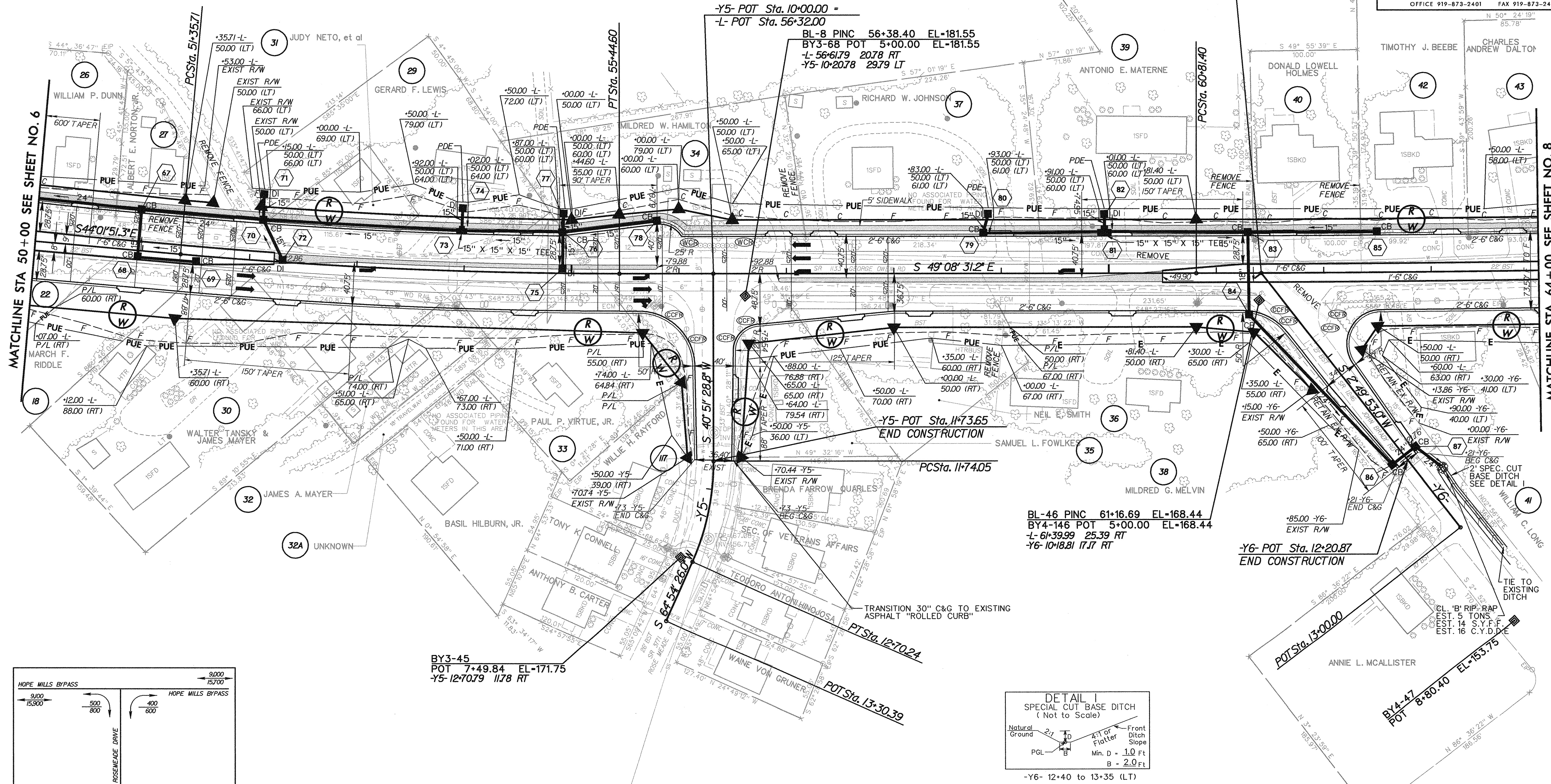
7/2/99

ALL DRIVEWAYS ARE 20' WIDE UNLESS OTHERWISE NOTED
BREAK UP AND REMOVE EXISTING PAVEMENT UNDERNEATH PROPOSED RAISED MEDIAN.

SEE SHEET 26 FOR -L-PROFILE
SEE SHEET 34 FOR -Y5-PROFILE
SEE SHEET 34 FOR -Y6-PROFILE

PROJECT REFERENCE NO. U-0620		SHEET NO. 7	
RW SHEET NO.			
ROADWAY DESIGN ENGINEER NORTH CAROLINA PROFESSIONAL SEAL 18442 DONALD HUBBARD 7/19/04		HYDRAULICS ENGINEER NORTH CAROLINA PROFESSIONAL SEAL 18442 CHARLES F. BOWLING, JR. 7-28-04	
Carter=Burgess Consultants in Planning, Engineering, Architecture, Construction Management and Related Services 5811 Glenwood Avenue, Suite 300 Raleigh, North Carolina 27612			
TRANSITE CONSULTING ENGINEERS, INCORPORATED ENGINEERS • PLANNERS • CEI 1300 Paddock Drive, Suite G-10 Raleigh, N.C. 27609 OFFICE 919-873-2401 FAX 919-873-2404			

-L- PI Sta 53+40.29 Δ = 5° 06' 39.9" (LT) D = 1' 15" 00.0" L = 408.89' T = 204.58' R = 4,583.66' SE = 0.025 INC = 60	-L- PI Sta 65+53.29 Δ = 2° 21' 32.9" (LT) D = 0' 15" 00.0" L = 943.66' T = 471.90' R = 22,918.31' SE = NC = 0.025	-Y5- PI Sta 12+22.86 Δ = 24° 02' 57.2" (RT) D = 25' 00" 00.0" L = 96.20' T = 48.82' R = 229.18' SE = EXIST
--	--	---



- 5' MONOLITHIC ISLAND (KEYED IN) & SIDEWALK
- PAINT STRIPED LANE CLOSURE
- PAVEMENT REMOVAL & OBLITERATION

1:31:55 AM Proj:\u0620\rdy_psh_07.dgn 07/19/04