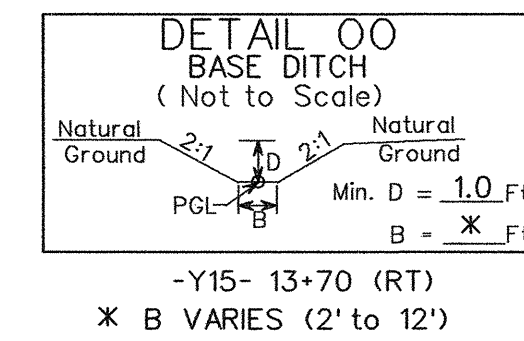
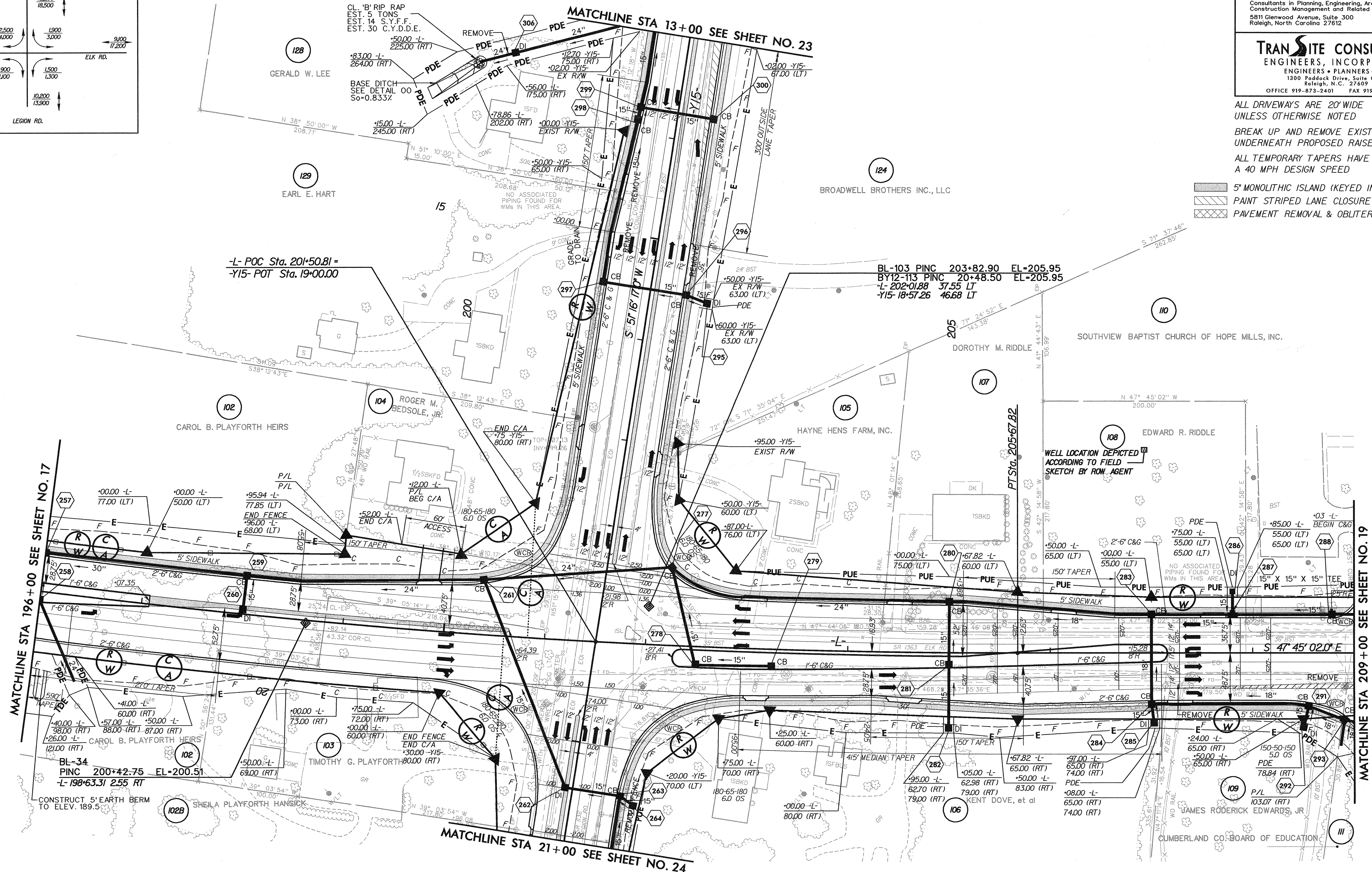
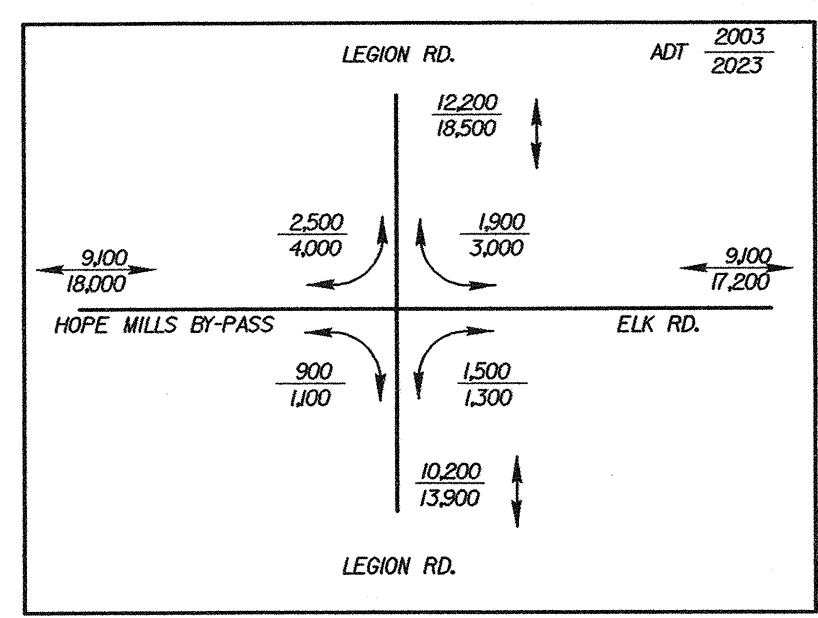


SEE SHEET 32 FOR -L- PROFILE
SEE SHEET 38 FOR -Y15- PROFILE

PROJECT REFERENCE NO. U-0620		SHEET NO. 18	
RW SHEET NO.			
ROADWAY DESIGN ENGINEER NORTH CAROLINA PROFESSIONAL SEAL 88946 DONALD HUBLEB 4-13-07		HYDRAULICS ENGINEER NORTH CAROLINA PROFESSIONAL SEAL 18442 LEON BOWMAN 4-14-05	
Carter-Burgess Consultants in Planning, Engineering, Architecture, Construction Management and Related Services 5811 Glenwood Avenue, Suite 300 Raleigh, North Carolina 27612			
TRANSITE CONSULTING ENGINEERS, INCORPORATED ENGINEERS • PLANNERS • CEI 1300 Paddock Drive, Suite G-10 Raleigh, N.C. 27609 OFFICE 919-873-2401 FAX 919-873-2404			



-L-
PI Sta 198+78.96
Δ = 10° 21' 40" (LT)
D = 0' 45' 00.0"
L = 1,381.49'
T = 692.63'
R = 7,639.44'
SE = 0.025
INC = 50



- 5' MONOLITHIC ISLAND (KEYED IN) & SIDEWALK
- PAINT STRIPED LANE CLOSURE
- PAVEMENT REMOVAL & OBLITERATION

ALL DRIVEWAYS ARE 20' WIDE UNLESS OTHERWISE NOTED
BREAK UP AND REMOVE EXISTING PAVEMENT UNDERNEATH PROPOSED RAISED MEDIAN.
ALL TEMPORARY TAPERS HAVE A 40 MPH DESIGN SPEED

7/2/09
11:33:44 AM
C:\Roadwork\Proj\U0620_RDY_PSH_18.DGN
04/13/2005