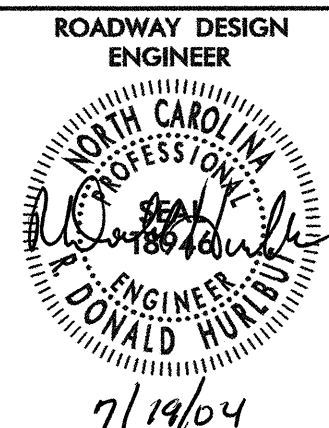
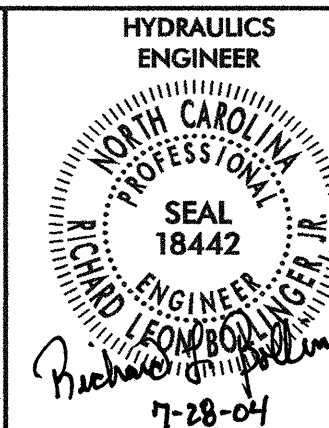
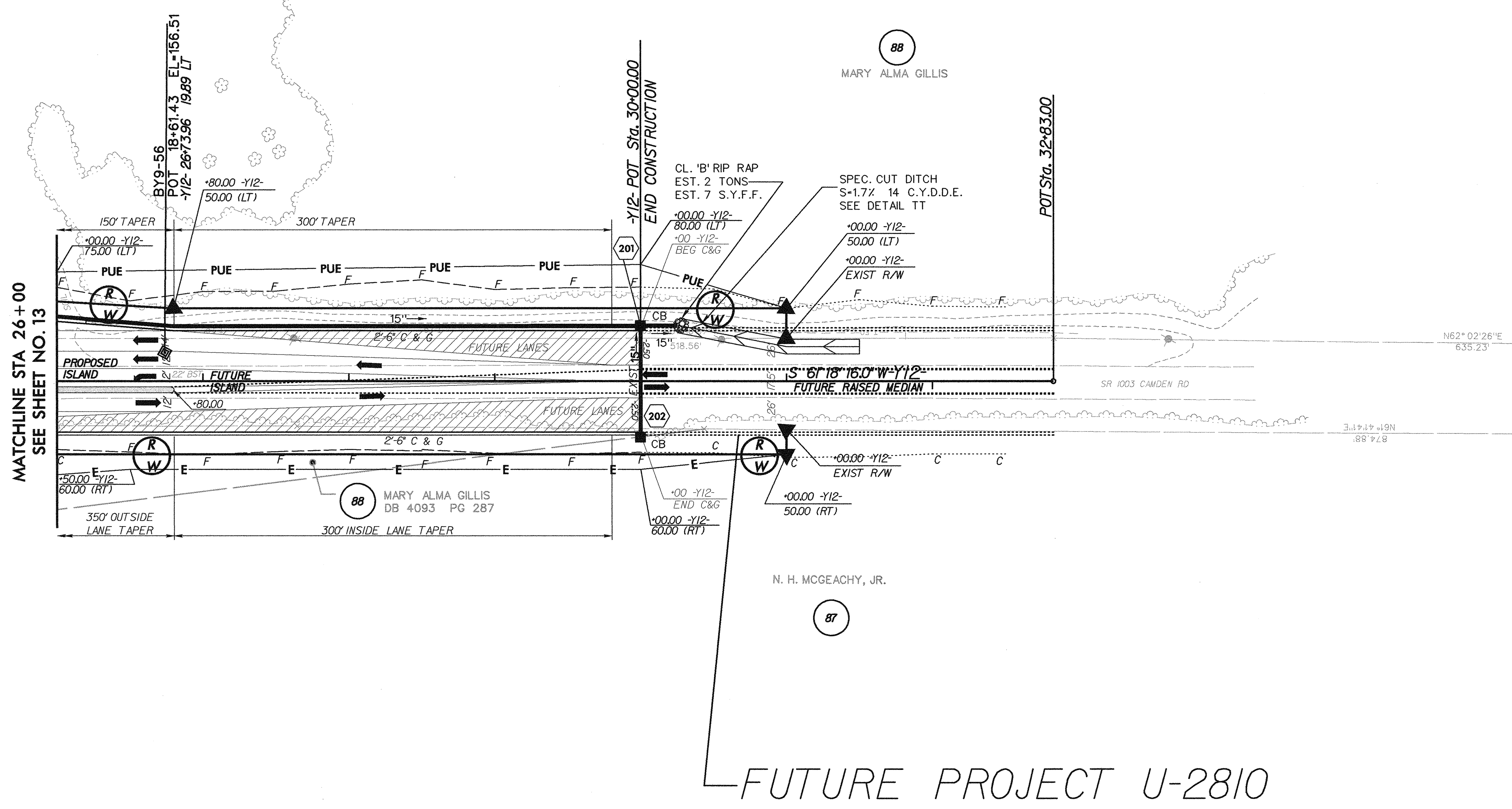
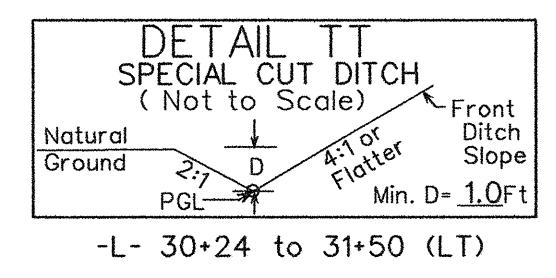
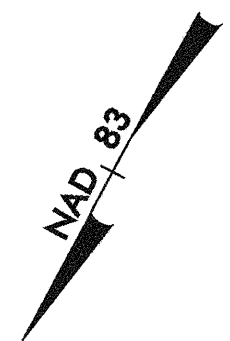
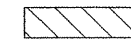


7/12/04

SEE SHEET 36 FOR -Y12- PROFILE

| | | | |
|---|--|--|--|
| PROJECT REFERENCE NO. U-0620 | | SHEET NO. 22 | |
| RW SHEET NO. | | | |
| ROADWAY DESIGN ENGINEER  | | HYDRAULICS ENGINEER  | |
| Carter-Burgess Consultants in Planning, Engineering, Architecture, Construction Management and Related Services 5811 Glenwood Avenue, Suite 300 Raleigh, North Carolina 27612 | | | |
| TRANSITE CONSULTING ENGINEERS, INCORPORATED ENGINEERS • PLANNERS • CEI 1300 Reddock Drive, Suite G-10 Raleigh, N.C. 27609 OFFICE 919-873-2401 FAX 919-873-2404 | | | |



-  5' MONOLITHIC ISLAND (KEYED IN) & SIDEWALK
-  PAINT STRIPED LANE CLOSURE
-  PAVEMENT REMOVAL & OBLITERATION

11:32:25 AM
c:\projects\0620\proj\0620_rdy_psh_22.dgn
07/17/2004