

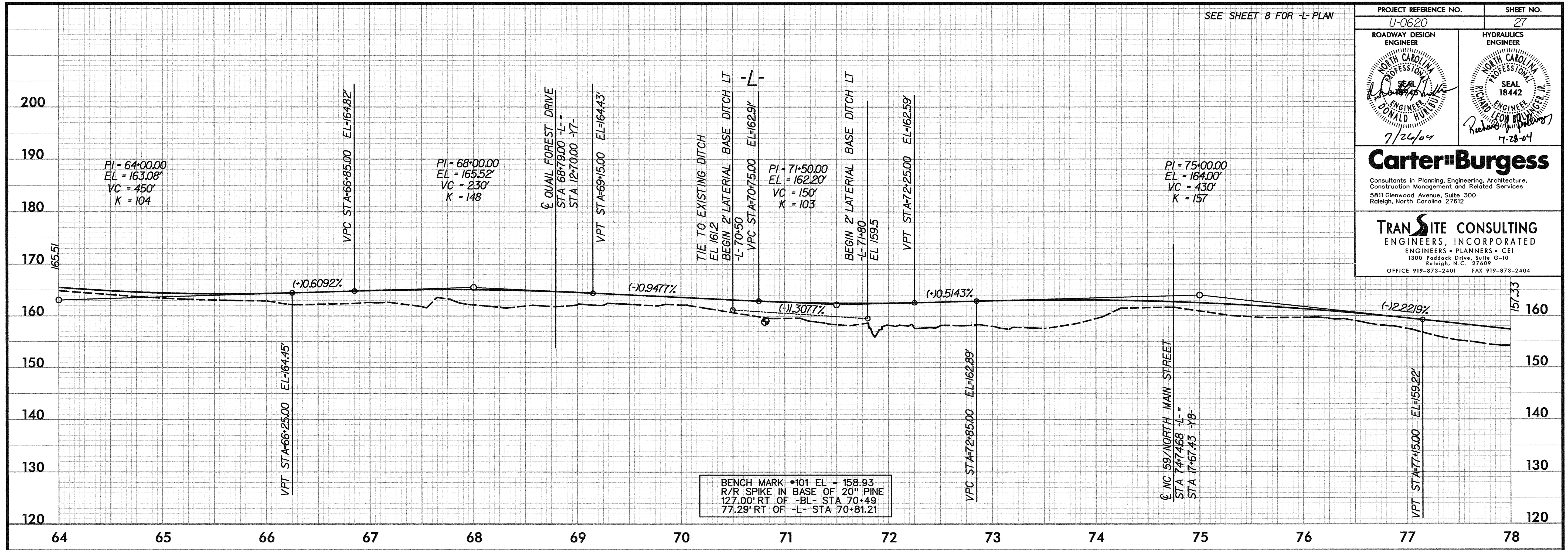
SEE SHEET 8 FOR -L- PLAN

PROJECT REFERENCE NO. U-0620 SHEET NO. 27

ROADWAY DESIGN ENGINEER NORTH CAROLINA PROFESSIONAL SEAL 18442 DONALD HIRSH	HYDRAULICS ENGINEER NORTH CAROLINA PROFESSIONAL SEAL 18442 RICHARD LEON HALL JR.
7/24/04	7-28-04

Carter-Burgess
 Consultants in Planning, Engineering, Architecture, Construction Management and Related Services
 5811 Glenwood Avenue, Suite 300
 Raleigh, North Carolina 27612

TRANSITE CONSULTING
 ENGINEERS, INCORPORATED
 ENGINEERS • PLANNERS • CEI
 1300 Paddock Drive, Suite G-10
 Raleigh, N.C. 27609
 OFFICE 919-873-2401 FAX 919-873-2404



SEE SHEET 9 FOR -L- PLAN

