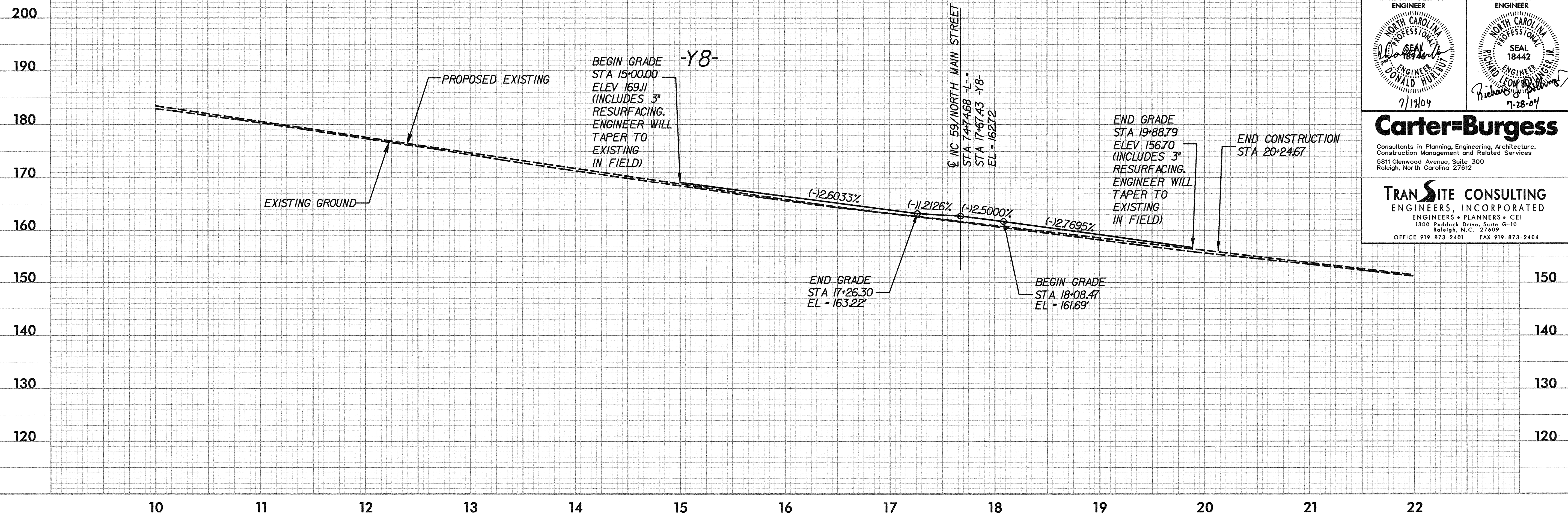


5/28/99

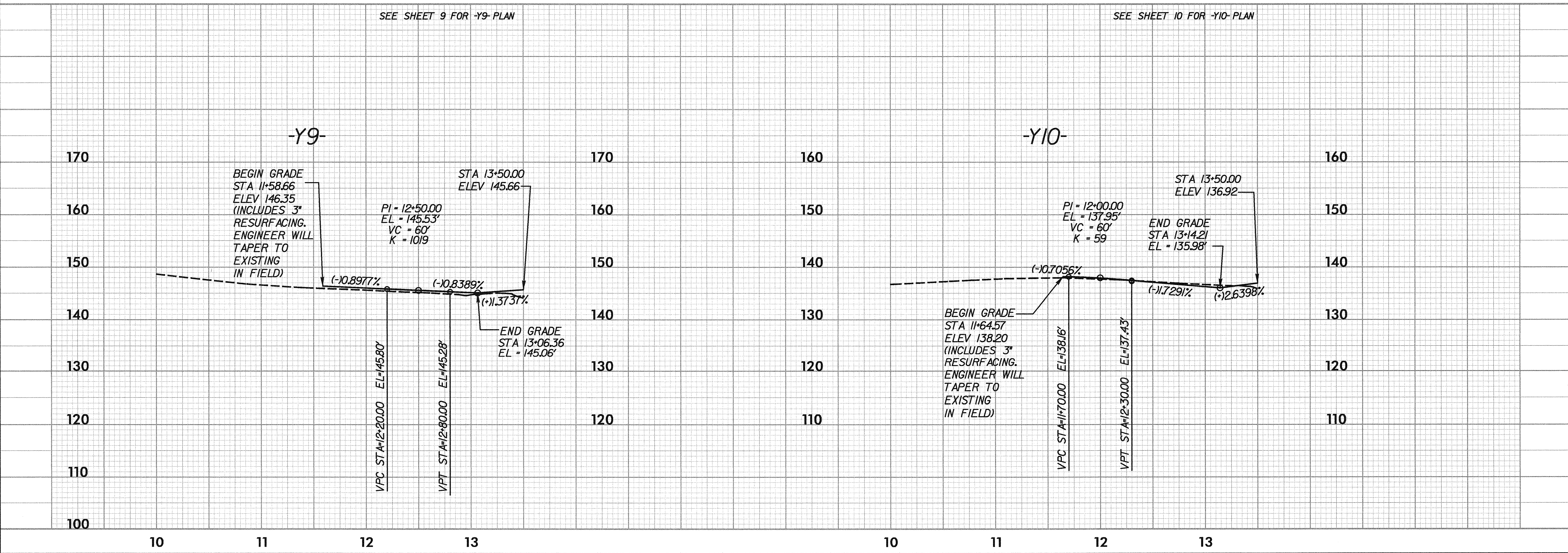
SEE SHEET 8 FOR -Y8- PLAN

PROJECT REFERENCE NO. U-0620		SHEET NO. 35
ROADWAY DESIGN ENGINEER NORTH CAROLINA PROFESSIONAL ENGINEER DONALD HURLBUT 7/19/04		HYDRAULICS ENGINEER NORTH CAROLINA PROFESSIONAL ENGINEER SEAL 18442 RICHARD E. BRIDGEMAN 7-28-07
Carter-Burgess Consultants in Planning, Engineering, Architecture, Construction Management and Related Services 5811 Glenwood Avenue, Suite 300 Raleigh, North Carolina 27612		
TRANSITE CONSULTING ENGINEERS, INCORPORATED ENGINEERS • PLANNERS • CEI 1300 Paddock Drive, Suite G-10 Raleigh, N.C. 27609 OFFICE 919-873-2401 FAX 919-873-2404		



SEE SHEET 9 FOR -Y9- PLAN

SEE SHEET 10 FOR -Y10- PLAN



r:\v\0620\planning\0620-pl-y8-10.dgn