

SEE SHEET 15 FOR -Y13- PLAN

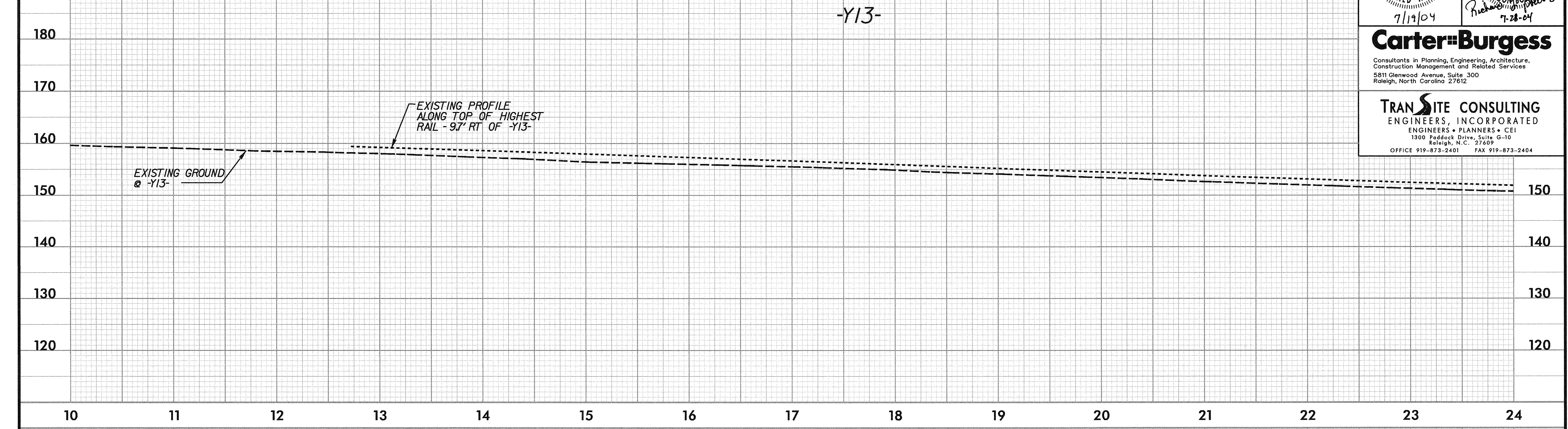
PROJECT REFERENCE NO. U-0620 SHEET NO. 37

ROADWAY DESIGN ENGINEER
 HYDRAULICS ENGINEER
 NORTH CAROLINA PROFESSIONAL ENGINEER SEAL 18442
 7/19/04 7-28-04

Carter-Burgess
 Consultants in Planning, Engineering, Architecture, Construction Management and Related Services
 5811 Glenwood Avenue, Suite 300
 Raleigh, North Carolina 27612

TRANSITE CONSULTING
 ENGINEERS, INCORPORATED
 ENGINEERS • PLANNERS • CEI
 1300 Paddock Drive, Suite G-10
 Raleigh, N.C. 27609
 OFFICE 919-873-2401 FAX 919-873-2404

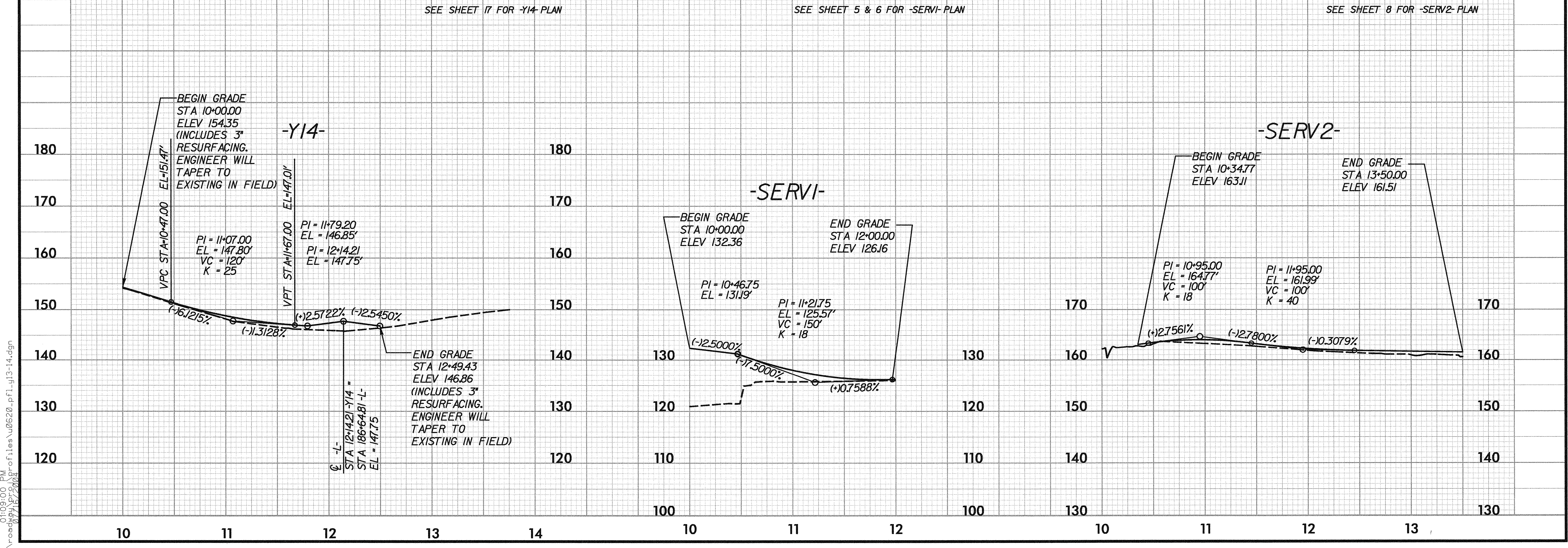
5/28/99



SEE SHEET 17 FOR -Y14- PLAN

SEE SHEET 5 & 6 FOR -SERVI- PLAN

SEE SHEET 8 FOR -SERV2- PLAN



01:09:00 PM
 r:\road\99\prj\0620\prj\0620\pl\0620\pl1\0620\pl13-14.dgn
 07/16/2004