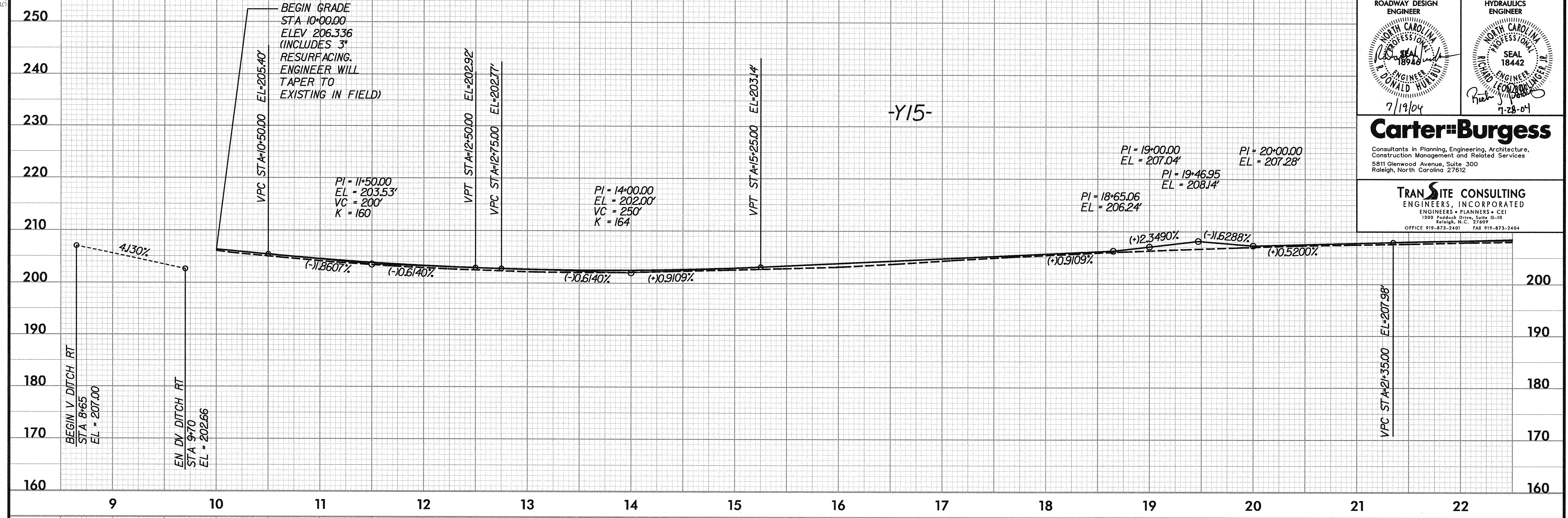


5/28/99

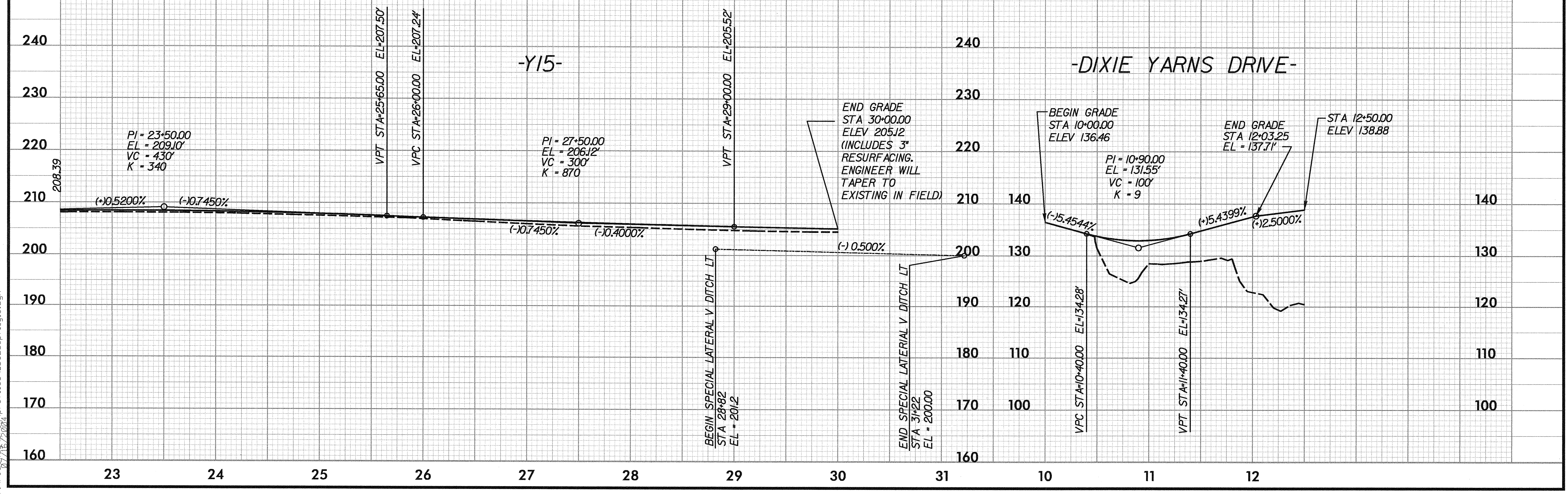
SEE SHEETS 18,23 & 24 FOR -Y15- PLAN

PROJECT REFERENCE NO. U-0620	SHEET NO. 38
ROADWAY DESIGN ENGINEER NORTH CAROLINA PROFESSIONAL SEAL 18442 7/19/04	HYDRAULICS ENGINEER NORTH CAROLINA PROFESSIONAL SEAL 18442 7-28-04
<b>Carter-Burgess</b> Consultants in Planning, Engineering, Architecture, Construction Management and Related Services 5811 Glenwood Avenue, Suite 300 Raleigh, North Carolina 27612	
<b>TRANSITE CONSULTING ENGINEERS, INCORPORATED</b> ENGINEERS - PLANNERS - CEI 1300 Faddock Drive, Suite G-10 Raleigh, N.C. 27609 OFFICE 919-873-2401 FAX 919-873-2404	



SEE SHEETS 18,23 & 24 FOR -Y15- PLAN

SEE SHEET 6 FOR -DIXIE YARNS DR- PLAN



01:09:01 PM  
r:\n\eng\proj\0620\profiles\0620.plt\y15.dgn