

REVISIONS

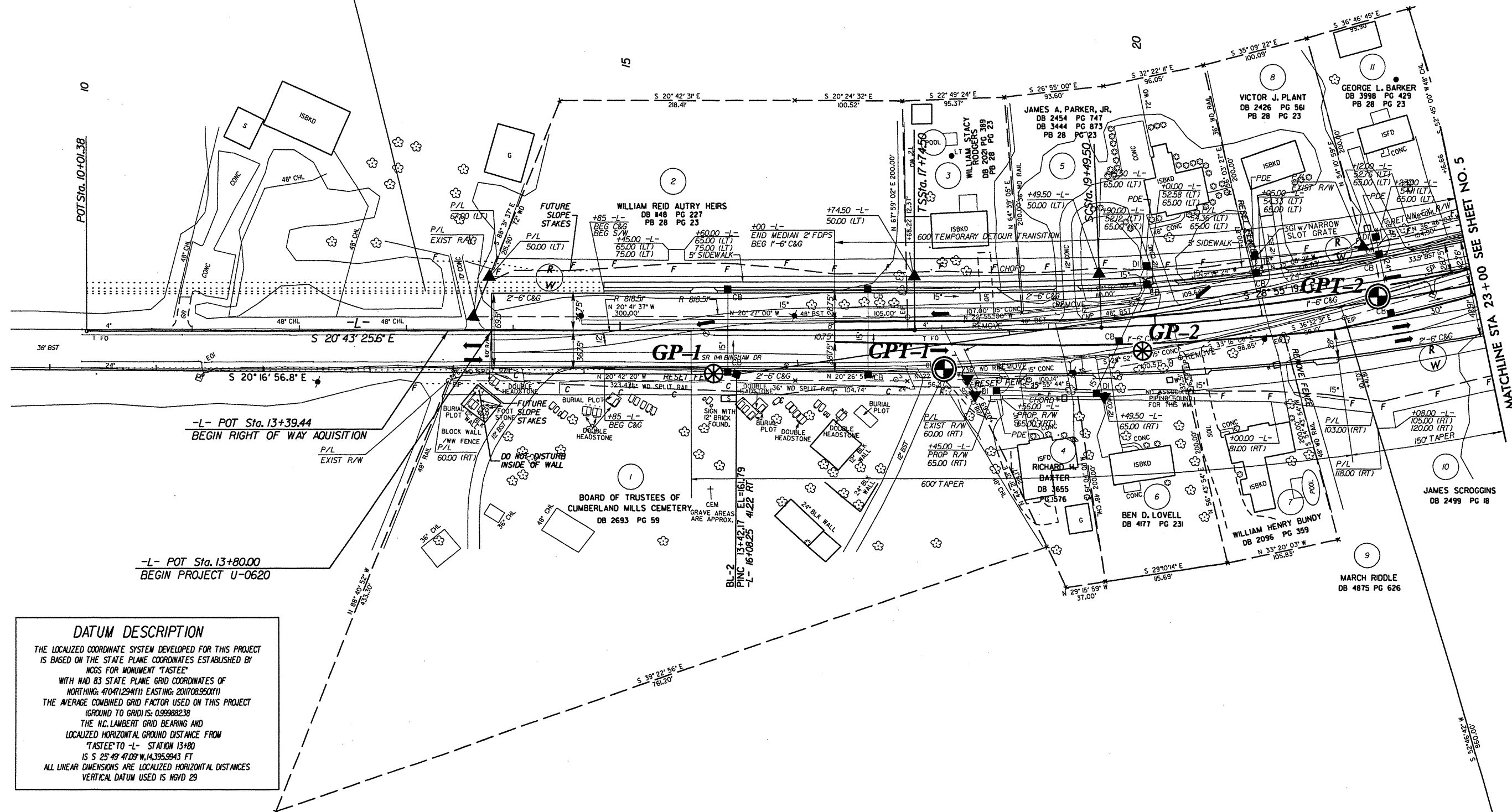
SEE SHEET 25 FOR -L- PROFILE

PROJECT REFERENCE NO. U-0620	SHEET NO. 4
RW SHEET NO.	
ROADWAY DESIGN ENGINEER	HYDRAULICS ENGINEER

-L-		
Pts Sta 18+91.7	Pt Sta 21+46.76	Pts Sta 24+15.30
Os = 2' 11" 15.0"	Δ = 9' 50" 20.5" (LT)	Os = 1' 29" 59.8"
Ls = 175.00'	D = 2' 30" 00.0"	Os = 1' 52" 30.2"
LT = 116.68'	L = 393.56'	Ls = 150.00'
ST = 58.34'	T = 197.27'	LT = 77.80'
	R = 2,291.83'	ST = 72.24'
	SE = 0.040	
	INC = 43.75	



FUTURE PROJECT U-3311



DATUM DESCRIPTION

THE LOCALIZED COORDINATE SYSTEM DEVELOPED FOR THIS PROJECT IS BASED ON THE STATE PLANE COORDINATES ESTABLISHED BY NCOS FOR MONUMENT 'TASTEE' WITH NAD 83 STATE PLANE GRID COORDINATES OF NORTHING: 470471294(1) EASTING: 201708350(1) THE AVERAGE COMBINED GRID FACTOR USED ON THIS PROJECT (GROUND TO GRID) IS: 0.99988238 THE N.C. LAMBERT GRID BEARING AND LOCALIZED HORIZONTAL GROUND DISTANCE FROM 'TASTEE' TO -L- STATION 13+80 IS S 25° 49' 47.09" W, 14,395.8943 FT ALL LINEAR DIMENSIONS ARE LOCALIZED HORIZONTAL DISTANCES VERTICAL DATUM USED IS NGVD 29

ALL DRIVEWAYS ARE 20' WIDE UNLESS OTHERWISE NOTED
BREAK UP AND REMOVE EXISTING PAVEMENT UNDERNEATH PROPOSED RAISED MEDIAN.