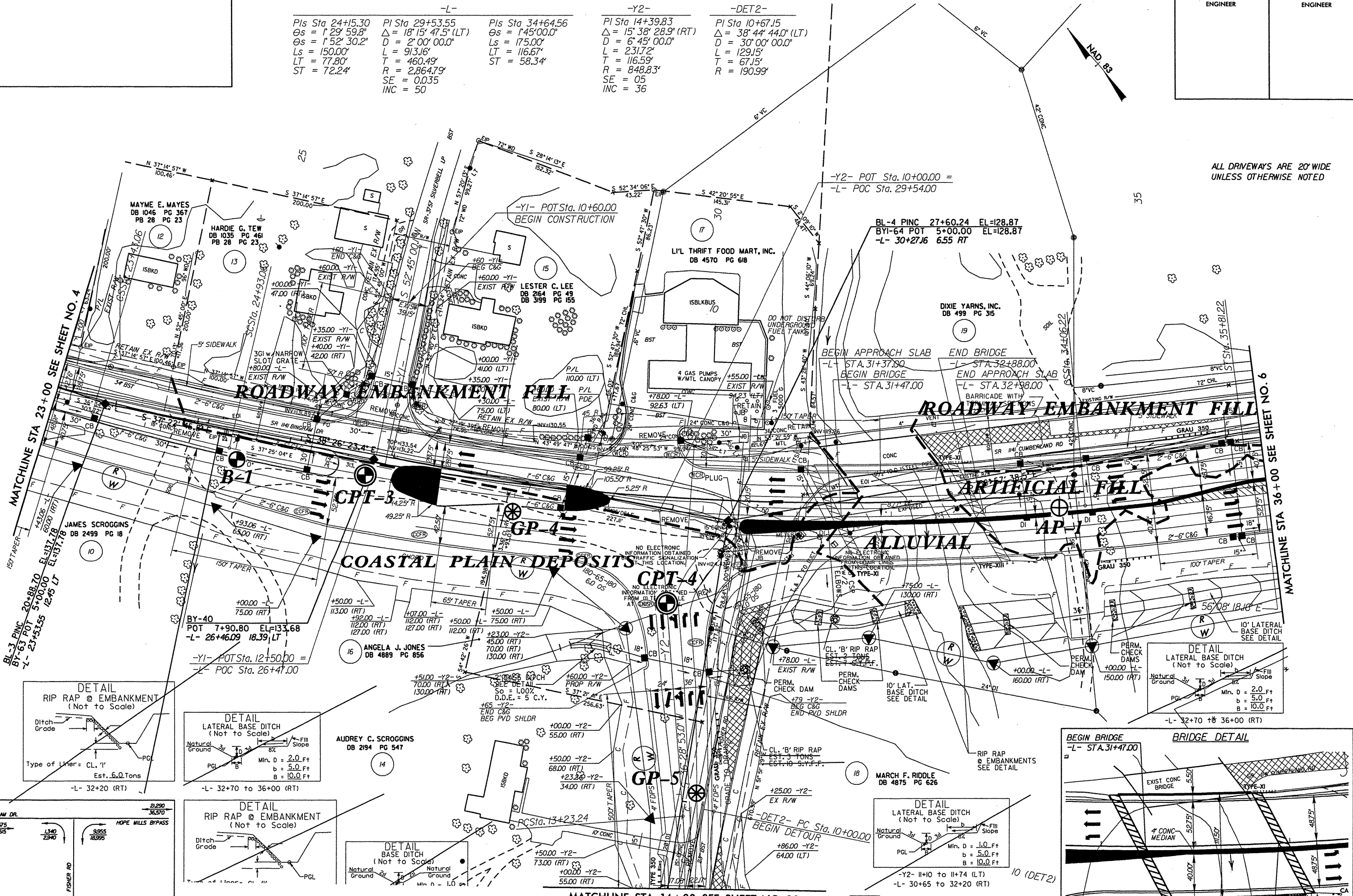


REVISIONS

SEE SHEET 25 FOR -L- PROFILE
SEE SHEET 33 FOR -Y1- PROFILE
SEE SHEET 33 FOR -Y2- PROFILE

PROJECT REFERENCE NO. U-0620	SHEET NO. 5
RW SHEET NO.	
ROADWAY DESIGN ENGINEER	HYDRAULICS ENGINEER

-L-	-Y2-	-DET2-
PI Sta 24+15.30 Os = 1° 29' 59.8" Os = 1° 52' 30.2" Ls = 150.00' LT = 77.80' ST = 72.24'	PI Sta 29+53.55 Δ = 18° 15' 47.5" (LT) D = 2' 00" 00.0" L = 913.16' T = 460.49' R = 2,864.79' SE = 0.035 INC = 50	PI Sta 34+64.56 Os = 1° 45' 00.0" Ls = 175.00' LT = 116.67' ST = 58.34'
	PI Sta 14+39.83 Δ = 15° 38' 28.9" (RT) D = 6' 45" 00.0" L = 231.72' T = 116.59' R = 848.83' SE = 05 INC = 36	PI Sta 10+67.15 Δ = 38° 44' 44.0" (LT) D = 30' 00" 00.0" L = 129.15' T = 67.15' R = 190.99'



MATCHLINE STA 23+00 SEE SHEET NO. 4

BL-3 PINC 20+88.70 EL=137.18
BY-63 POT 5+00.00 EL=137.18
L- 23+53.55 12+45 LT

JAMES SCROGGINS
DB 2499 PG 18

ANGELA J. JONES
DB 4889 PG 856

AUDREY C. SCROGGINS
DB 2194 PG 547

MARCH F. RIDGLE
DB 4875 PG 626

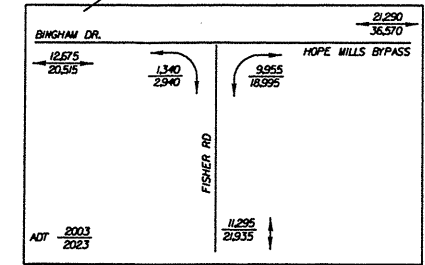
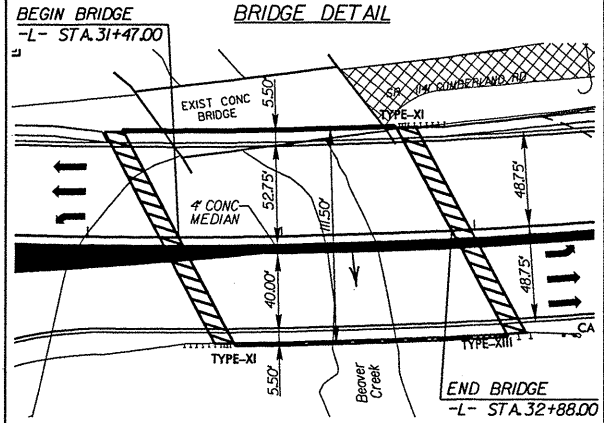
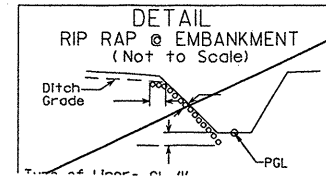
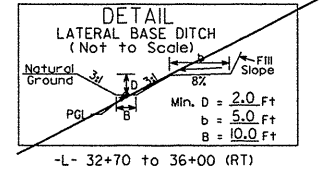
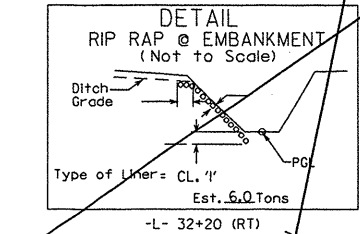
MAYME E. MAYES
DB 1046 PG 367
PB 28 PG 23

HARDIE C. TEW
DB 1035 PG 461
PB 28 PG 23

LESTER C. LEE
DB 2164 PG 49
DB 3199 PG 155

L'L THRIFT FOOD MART, INC.
DB 4570 PG 618

DIXIE YARNS, INC.
DB 499 PG 315



MATCHLINE STA 14+00 SEE SHEET NO. 20

PAINT STRIPED LANE CLOSURE

PAVEMENT REMOVAL

BREAK UP AND REMOVE EXISTING PAVEMENT UNDERNEATH PROPOSED RAISED MEDIAN.

ALL DRIVEWAYS ARE 20' WIDE UNLESS OTHERWISE NOTED