

REVISIONS

SEE SHEET 27 FOR -L- PROFILE
SEE SHEET 34 FOR -Y7- PROFILE
SEE SHEET 35 FOR -Y8- PROFILE

PROJECT REFERENCE NO.	SHEET NO.
U-0620	8
RDW SHEET NO.	
ROADWAY DESIGN ENGINEER	HYDRAULICS ENGINEER

TIE TO PROJECT U-2308

WILLIAM HOWARD DEAN
DB 4227 PG 132

ALL DRIVEWAYS ARE 20' WIDE
UNLESS OTHERWISE NOTED

BL-10 PINC 74+40.36 EL=162.82
BY6-70 PINC 11+26.79 EL=162.82
-L- 74+58.78 85.16 LT
-Y8- 16+87.15 32.28 LT

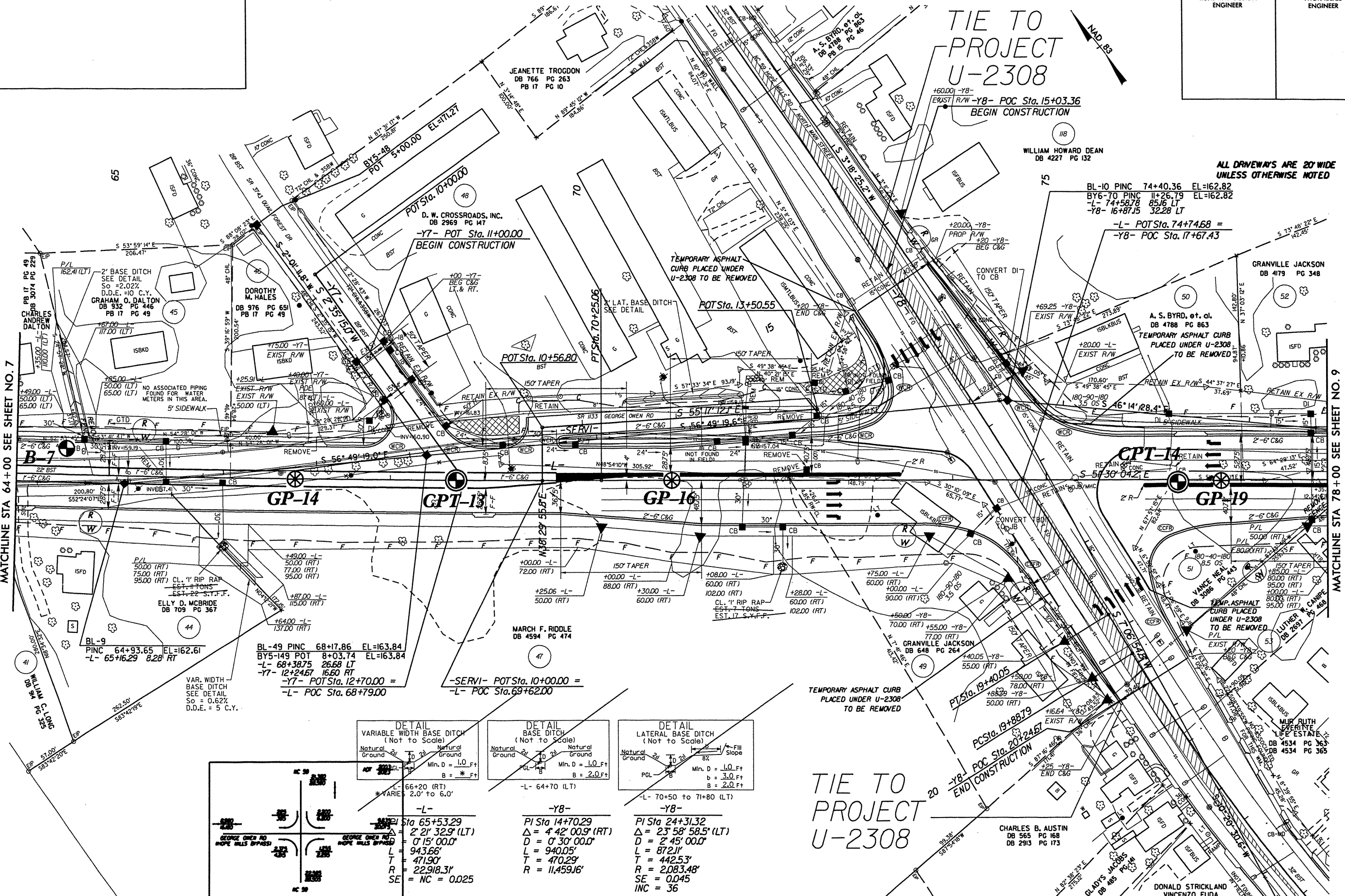
-L- POTSta. 74+74.68 =
-Y8- POC Sta. 17+67.43

GRANVILLE JACKSON
DB 4179 PG 348

A. S. BYRD, et. al.
DB 4788 PG 863
TEMPORARY ASPHALT CURB
PLACED UNDER U-2308
TO BE REMOVED

MATCHLINE STA 64+00 SEE SHEET NO. 7

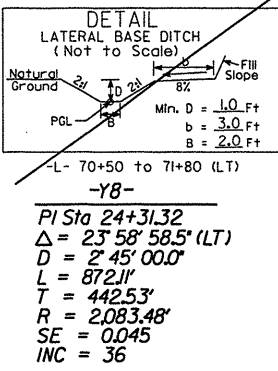
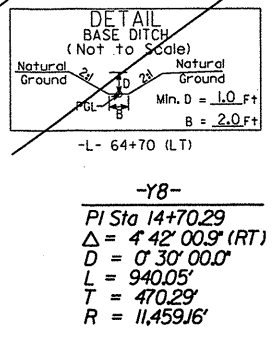
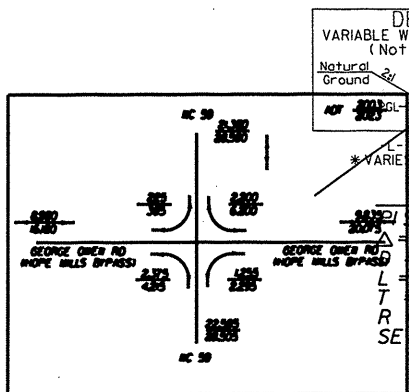
MATCHLINE STA 78+00 SEE SHEET NO. 9



BL-9
PINC 64+93.65 EL=162.61
-L- 65+16.29 8.28 RT

BL-49 PINC 68+17.86 EL=163.84
BY5-149 POT 8+03.74 EL=163.84
-L- 68+38.75 26.68 LT
-Y7- 12+24.67 16.60 RT
-Y7- POTSta. 12+70.00 =
-L- POC Sta. 68+79.00

-SERVI- POTSta. 10+00.00 =
-L- POC Sta. 69+62.00



TIE TO PROJECT U-2308

CHARLES B. AUSTIN
DB 565 PG 168
DB 2913 PG 173

PAVEMENT REMOVAL
BREAK UP AND REMOVE EXISTING PAVEMENT
UNDERNEATH PROPOSED RAISED MEDIAN.