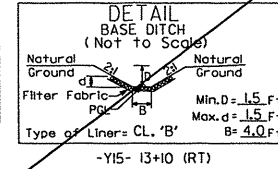
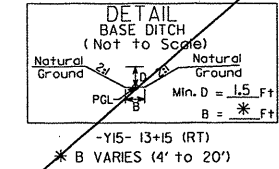


REVISIONS

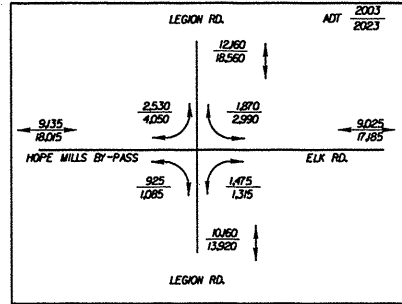
SEE SHEET 32 FOR -L- PROFILE  
SEE SHEET 38 FOR -Y15- PROFILE

PROJECT REFERENCE NO. U-0620	SHEET NO. 18
RW SHEET NO.	
ROADWAY DESIGN ENGINEER	HYDRAULICS ENGINEER

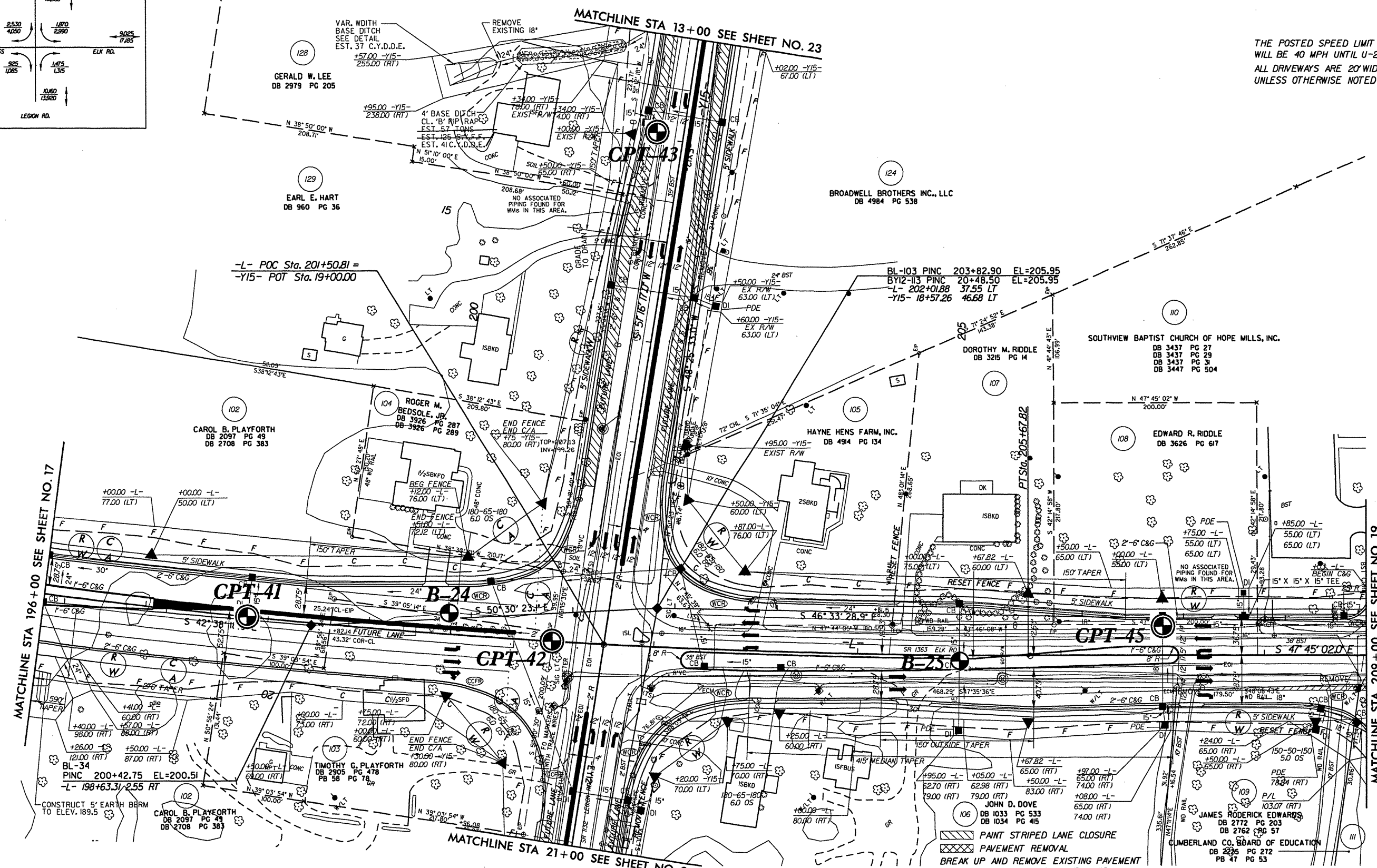
-L-  
 PI Sta 198+78.96  
 $\Delta = 10' 21' 40.1''$  (LT)  
 $D = 0' 45' 00.0''$   
 $L = 1,381.49'$   
 $T = 692.63'$   
 $R = 76,394.4'$   
 $SE = 0.025$   
 $INC = 50$



NAD 83



THE POSTED SPEED LIMIT ON -Y15- WILL BE 40 MPH UNTIL U-2809 IS BUILT ALL DRIVEWAYS ARE 20' WIDE UNLESS OTHERWISE NOTED



MATCHLINE STA 196+00 SEE SHEET NO. 17

MATCHLINE STA 13+00 SEE SHEET NO. 23

MATCHLINE STA 21+00 SEE SHEET NO. 24

MATCHLINE STA 209+00 SEE SHEET NO. 19

CONSTRUCT 5' EARTH BERM TO ELEV. 189.5  
 CAROL B. PLAYFORTH  
 DB 2097 PG 48  
 DB 2708 PG 383

TIMOTHY G. PLAYFORTH  
 DB 2905 PG 478  
 PB 58 PG 78

JOHN D. DOVE  
 DB 1033 PG 533  
 DB 1034 PG 415

JAMES RODERICK EDWARDS  
 DB 2772 PG 203  
 DB 2762 PG 57  
 CUMBERLAND CO. BOARD OF EDUCATION  
 DB 2225 PG 272  
 PB 47 PG 53

- PAINT STRIPED LANE CLOSURE
- PAVEMENT REMOVAL
- BREAK UP AND REMOVE EXISTING PAVEMENT UNDERNEATH PROPOSED RAISED MEDIAN.