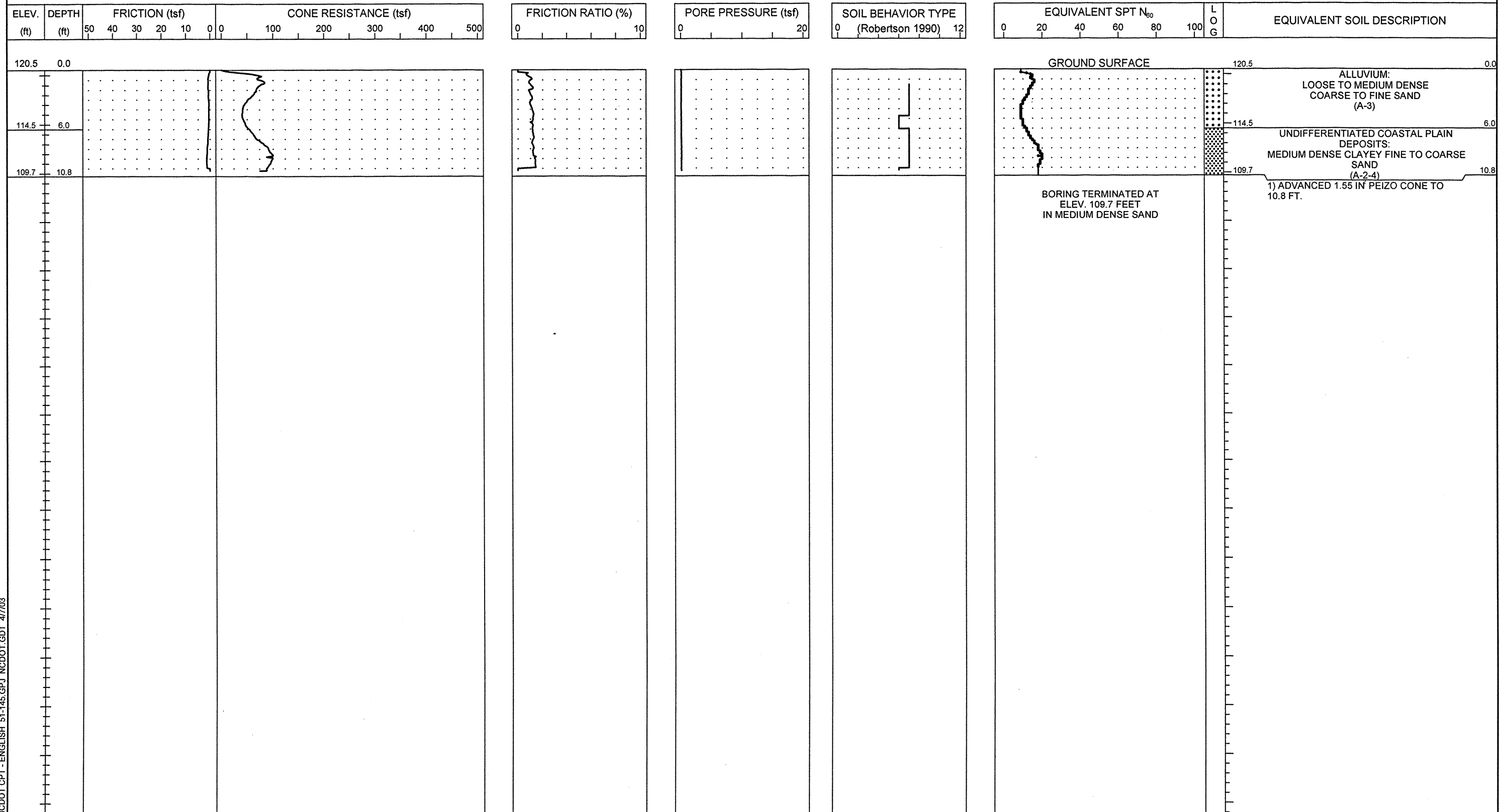




| | | | | | | |
|---|-----------------------|---------------------|----------------------|--|-------------------------------|--------------------------------------|
| PROJECT NO. 8.1442601 | ID. U-0620 | COUNTY Cumberland | GEOLOGIST S. JOHNSON | TYPE OF CONE 1.55 in ² PEIZO CONE | ROD TYPE 1.55 in ² | MAXIMUM DOWN PRESSURE Approx. 40 ksf |
| SITE DESCRIPTION Hope Mills Bypass from SR 1141 (Bingham Drive) to SR 1363 (Elk Road) | | | GROUND WATER (ft) | TOTAL DEPTH 10.8 ft | DRILL MACHINE Gyro Track | DRILL METHOD Direct Push |
| BORING NO. CPT-6 | BORING LOCATION 38+50 | OFFSET 0 ft CL | ALIGNMENT -L- | 0 HR. DRY | DATE STARTED 12/10/01 | COMPLETED 12/10/01 |
| COLLAR ELEV. 120.5 ft | NORTHING 455,621.7 | EASTING 2,006,922.0 | 24 HR. N/A | DRILLER: BUTCH KNAPP | TECHNICIAN ANDY FEIX | SURFACE WATER DEPTH N/A |



NCDOT CPT - ENGLISH 51-145.GPJ NCDOT.GDT 4/7/03