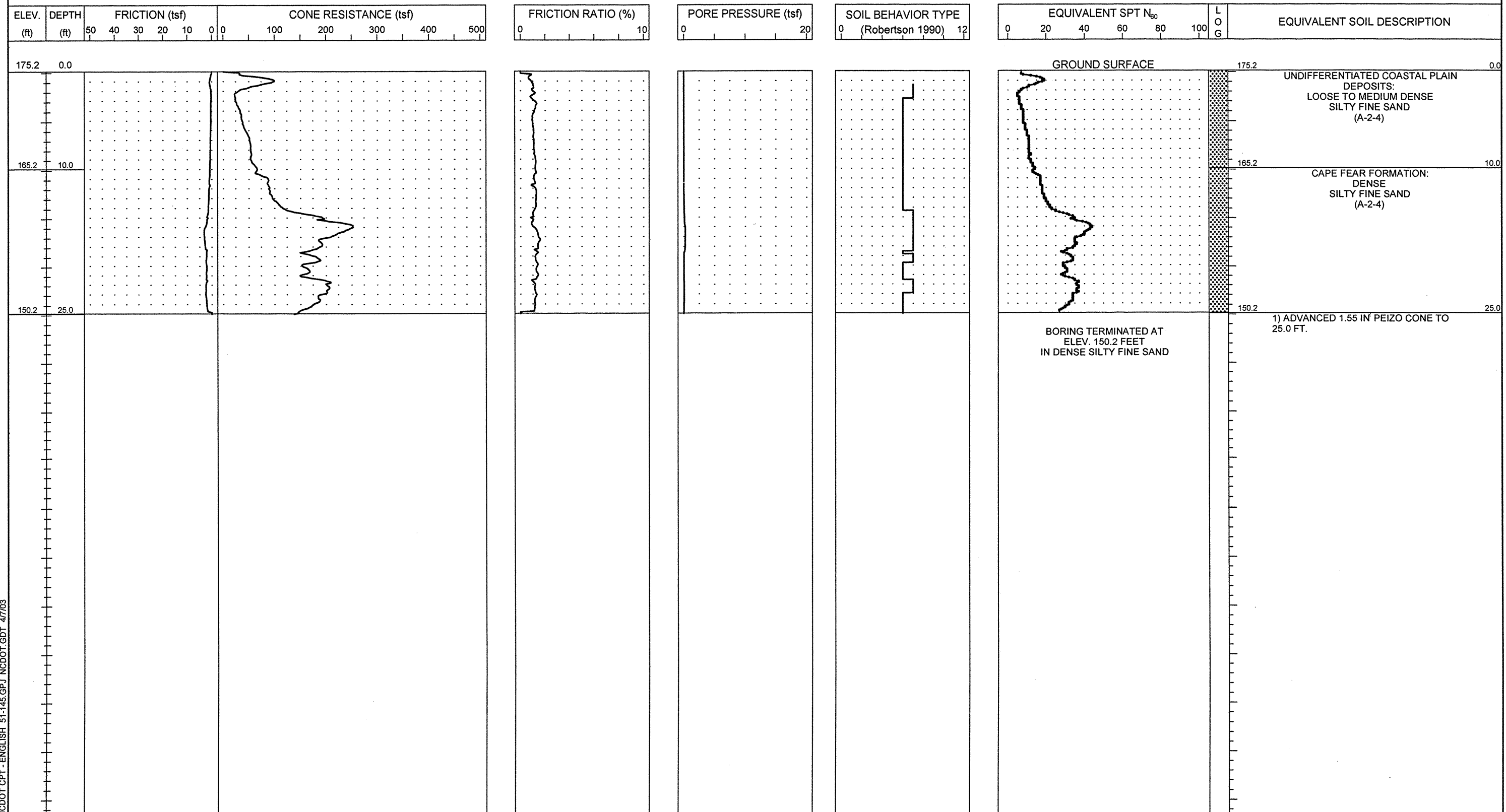




PROJECT NO. 8.1442601	ID. U-0620	COUNTY Cumberland	GEOLOGIST S. JOHNSON	TYPE OF CONE 1.55 in <sup>2</sup> PEIZO CONE	ROD TYPE 1.55 in <sup>2</sup>	MAXIMUM DOWN PRESSURE Approx. 40 ksf		
SITE DESCRIPTION Hope Mills Bypass from SR 1141 (Bingham Drive) to SR 1363 (Elk Road)				GROUND WATER (ft)	TOTAL DEPTH 25.0 ft	DRILL MACHINE Gyro Track	DRILL METHOD Direct Push	HAMMER TYPE N/A
BORING NO. CPT-9	BORING LOCATION 46+52	OFFSET 0 ft LT	ALIGNMENT -L-	0 HR. DRY	DATE STARTED 12/4/01	COMPLETED 12/4/01	SURFACE WATER DEPTH N/A	
COLLAR ELEV. 175.2 ft	NORTHING 455,132.4	EASTING 2,007,555.1	24 HR. N/A	DRILLER: BUTCH KNAPP	TECHNICIAN ANDY FEIX			



NCDOT CPT - ENGLISH 51-145.GPJ NCDOT.GDT 4/7/03